



Molecular diversity of *Mycobacterium tuberculosis* isolates from patients with tuberculosis in Honduras.

Senia Rosales, Lelany Pineda-García, Solomon Ghebremichael, Nalin Rastogi,
Sven E Hoffner

► To cite this version:

Senia Rosales, Lelany Pineda-García, Solomon Ghebremichael, Nalin Rastogi, Sven E Hoffner. Molecular diversity of *Mycobacterium tuberculosis* isolates from patients with tuberculosis in Honduras.. BMC Microbiology, 2010, 10, pp.208. 10.1186/1471-2180-10-208 . pasteur-00511163

HAL Id: pasteur-00511163

<https://riip.hal.science/pasteur-00511163>

Submitted on 24 Aug 2010

HAL is a multi-disciplinary open access archive for the deposit and dissemination of scientific research documents, whether they are published or not. The documents may come from teaching and research institutions in France or abroad, or from public or private research centers.

L'archive ouverte pluridisciplinaire **HAL**, est destinée au dépôt et à la diffusion de documents scientifiques de niveau recherche, publiés ou non, émanant des établissements d'enseignement et de recherche français ou étrangers, des laboratoires publics ou privés.

RESEARCH ARTICLE

Open Access

Molecular diversity of *Mycobacterium tuberculosis* isolates from patients with tuberculosis in Honduras

Senia Rosales^{1,2,3*}, Lelany Pineda-García¹, Solomon Ghebremichael^{3,4}, Nalin Rastogi⁵, Sven E Hoffner^{3,4}

Abstract

Background: Tuberculosis persists as a public health problem in Honduras. A better knowledge of the molecular characteristics of *Mycobacterium tuberculosis* strains will contribute to understand the transmission dynamics of the disease within the country. The aim of this study was to provide an insight of the genetic biodiversity of *M. tuberculosis* clinical isolates collected in Honduras between 1994 and 2002. Genotyping was performed using spoligotyping and RFLP. The spoligotypes obtained were compared with the SITVIT2 proprietary database of the Pasteur Institute of Guadeloupe.

Results: Spoligotyping grouped 84% of the isolates into 27 clusters (2 to 43 strains per cluster). Of the 44 shared international types (SITs) identified among the Honduran stains, 8 SITs were newly identified either within the present study or after match with an orphan type previously identified in the SITVIT2 database. In addition, 16 patterns corresponded to orphan, previously unreported isolates. The Latin American Mediterranean (LAM) lineage was the most common in this study; 55% of the strains belonged to this family. Other genotypes found were Haarlem (16%), T (16%), X-clade (6%), Unknown signature (5%) and S (1%). Only one Beijing strain was identified (0.5%). We observed a high degree of diversity after characterizing the 43 isolates belonging to the main spoligotyping cluster (SIT 33, LAM3) with IS6110-RFLP. A total of 35 different RFLP-fingerprints were detected, of which 6 patterns corresponded to the same number of clusters comprising 14 strains.

Conclusions: The findings obtained in this study show that tuberculosis transmission in Honduras is due to modern *M. tuberculosis* lineages with high level of biodiversity.

Background

Honduras is the heart of Central America. It has a population of 8 million inhabitants [1] and is located between the Caribbean Sea and the Pacific Ocean sharing boundaries with Guatemala, El Salvador and Nicaragua. As in many other low-income countries, tuberculosis (TB) is a major public health issue. Although the reported TB incidence rate has decreased from 72/100,000 in 1993 to 37/100,000 in 2008 [2], TB control remains a priority. A better understanding of TB transmission in the country could help to identify risk settings as well as to improve contact tracing.

Since the early 1990's new DNA-fingerprinting tools have been developed to improve TB case detection and control [3-5]. Molecular typing techniques have been used to detect and follow the spread of individual strains of the *Mycobacterium tuberculosis* complex (MTC), complementing conventional epidemiological methods and allowing the study of transmission dynamics. Among these techniques is the restriction fragment length polymorphism (RFLP), it uses the insertion sequence IS6110 as a probe to enable strain differentiation, and has been considered the gold standard for genotyping the MTC [6].

Another molecular fingerprinting method is spoligotyping, a robust polymerase chain reaction (PCR) - based technique which relies on the detection of

* Correspondence: senia.rosales@smi.se

¹Escuela de Microbiología, Universidad Nacional Autónoma de Honduras, Tegucigalpa, Honduras

Full list of author information is available at the end of the article

43 short non-repetitive spacer sequences located in the Direct Repeat (DR) region of the MTC genome [7].

A first overview of the population structure of MTC strains circulating in Honduras was reported in a study conducted in 1996 [8]. In this study, a high degree of strain diversity, based on RFLP molecular fingerprinting was seen among 84 *M. tuberculosis* isolates obtained from the same number of Honduran pulmonary-TB patients.

The purpose of this study was to provide a better insight of the biodiversity of Honduran MTC isolates using the spoligotyping as the genotyping technique.

Methods

Study population

The study population consisted of 206 clinical *Mycobacterium tuberculosis* isolates from Honduran TB patients. These were collected at two different time points. Eighty-seven strains (group I) were isolated between 1994 and 1998 at the Instituto Nacional Cardiopulmonar (INCP), the national reference hospital for lung and heart diseases. Part of this material was also included in the first molecular typing study carried out in Honduras [8]. The remaining 119 strains (group II) were collected countrywide in 2002 as part of the National Survey of Tuberculosis Drug-Resistance [9], coordinated by the Honduran National TB Reference Laboratory (NRL).

All strains were isolated on Lowenstein Jensen (LJ) medium and confirmed to be of the MTC using standard biochemical tests [10] (niacin production, catalase activity and nitrate reduction). The drug-susceptibility profile of the isolates belonging to group I was determined at the Swedish Institute for Infectious Disease Control (SMI) using the BACTEC 460 system (Becton Dickinson, Sparks, MD USA) [11], with the following drug concentrations: rifampicin (RIF) 2.0 µg/ml, isoniazid (INH) 0.2 µg/ml, streptomycin (STM) 4.0 µg/ml and ethambutol (EMB) 5.0 µg/ml. For the group II isolates, the proportion method on LJ medium [12] was performed at the Honduran NRL to determine the susceptibility to the first-line drugs. The following critical concentrations were used: RIF 40 µg/ml, INH 0.2 µg/ml, STM 4.0 µg/ml, EMB 2.0 µg/ml.

The strains were subsequently sent to the SMI, where the genotyping was performed.

DNA extraction

All isolates were subculture on LJ medium at SMI. For spoligotyping, mycobacterial lysates were prepared by resuspending 2 loops of bacteria in 250 µl of 1 × TE buffer. After heat-killing the cells at 80°C during 1 hour, the suspensions were centrifuged at 13000 rpm for 2 minutes. Supernatants were discarded and pellets resuspended in 500 µl of 150 mM NaCl. These

centrifugation and resuspension steps were repeated. The final pellet was then dissolved in 25 µl of 1 × TE buffer.

For RFLP typing, genomic DNA was obtained using the cetyl-trimethyl ammonium bromide (CTAB) method [13].

Spoligotyping

All isolates were genotyped with a spoligotyping commercial kit (Isogen Bioscience, BV Maarsse, The Netherlands) according to the protocol previously described by Kamerbeek *et al* [7]. Briefly, the DR region of the TB genome was amplified using primers DRa and DRb, and the amplified biotinylated products hybridized to a set of 43 oligonucleotides covalently bound to a membrane. The hybridized PCR products were then incubated with a streptavidin-peroxidase conjugate and the membrane then exposed to chemiluminescence (Amersham ECL Direct™ nucleic acid labeling and detection system, GE Healthcare Limited, UK) and exposed on an X-ray film (Amersham Hyperfilm™ ECL, GE Healthcare Limited, UK) according to the manufacturer's instruction. The X-ray film was developed using standard photochemical procedures after 20 minutes exposure. DNA extracts of *M. tuberculosis* H37Rv and *M. bovis* BCG were used as controls.

The patterns obtained were analyzed using the BioNumerics software version 5.1 (Applied Maths, Sint-Martens-Latem, Belgium). A cluster was defined as two or more strains sharing identical spoligotyping patterns. Spoligotypes in binary format were converted to an octal code for comparison with the SITVIT2 proprietary database of the Pasteur Institute of Guadeloupe, which is an updated version of the previously released SpolDB4 database [14,15].

Database comparison and geographical distribution of spoligotypes

The obtained octal spoligotypes codes were entered into the SITVIT2 database. In this database, two or more patient isolates sharing identical spoligotype patterns are defined as SIT (Spoligotype International Type) whilst single spoligopatterns are defined as "orphan" isolates. Major phylogenetic clades were assigned according to signatures provided in SpolDB4. The SpolDB4 defines 62 genetic lineages/sub-lineages [14] and includes specific signatures for various *M. tuberculosis* complex members such as *M. bovis*, *M. caprae*, *M. microti*, *M. canettii*, *M. pinipedii*, and *M. africanum*, as well as including rules for defining the major lineages/sub-lineages for *M. tuberculosis sensu stricto*. At the time of the present study, SITVIT2 contained more than 3000 SITs with global genotyping information on around 74,000 *M. tuberculosis* clinical isolates from 160 countries of origin.

The worldwide distribution of predominant spoligo-types found in this study (SITs representing 4 or more strains) was further investigated using the SITVIT2 database, and regions with $\geq 5\%$ of a given SIT as compared to their total number in the SITVIT2 database, were recorded. The various macro-geographical regions and sub-regions were defined according to the specifications of the United Nations [16].

The same criteria were used to compare the distribution by country of predominant SITs (countries with $\geq 5\%$ of a given SIT). The three-letters country codes were used as defined in the ISO 3166 standard [17].

Comparison of spoligotypes families and principal genetic groups

The overall distribution of strains, according to the major *M. tuberculosis* spoligotyping-defined families, was compared to the principal genetic groups (PGG) based on *KatG463-gyrA95* polymorphisms [18]. The comparison was inferred from the reported linking of specific spoligotype patterns to PGG1, 2 or 3 [19-21].

Restriction fragment length polymorphism

The standard RFLP protocol [6] was used to further characterize 43 strains found to belong to a single spoligotype cluster. Briefly, the genomic mycobacterial DNA was digested by the restriction enzyme *Pvu* II and separated by gel electrophoresis. Following southern blot, samples were hybridized with the probe IS6110 and detected by chemiluminescence (Amersham ECL direct™ nucleic acid labeling and detection system, GE Healthcare Limited, UK) using X-ray films (Amersham Hyperfilm™ ECL, GE Healthcare Limited, UK).

The *M. tuberculosis* strain 14323 was used as an external marker for the comparison of patterns and the BioNumerics software was used to analyze the patterns obtained. A dendrogram was constructed to show the degree of similarity among the strains using the unweighted pair group method of arithmetic average (UPGMA) and the Jaccard index (1% tolerance, 0.5% optimization). Two or more strains with exactly the same fingerprint were defined as an RFLP cluster.

Epidemiological information

General epidemiological data such as sex, age, geographic origin, HIV status, previous history of TB and drug-susceptibility profile was retrieved from laboratory records and/or medical files, using a standardized questionnaire.

Statistical analysis

Epi Info™ version 3.5.1 (Centers for Disease Control, Atlanta, USA) was used for the statistical analysis of the data. The association between demographic characteristics

and clustering by spoligotyping was assessed using Yates-corrected Chi square (X^2) or Fisher exact (2-tailed) tests; p-values < 0.05 were considered significant. Odds ratios (OR) and the 95% confidence interval (95% CI) were calculated. Statistical analysis of mean ages was performed using the Student's t-test.

Ethical considerations

This study received approval from the Ethical Committee in Biomedical Research of the Scientific Research Unit, of the Universidad Nacional Autónoma de Honduras.

Results

Spoligotyping results

The 206 *M. tuberculosis* isolates from this study belonged to one of 60 different spoligotype patterns. Sixteen patterns corresponded to orphan strains that were unique among more than 74,000 strains recorded in the SITVIT2 database (Additional file 1) whilst 44 patterns, from 190 patient isolates, corresponded to shared-types, i.e. they had an identical pattern shared with two or more patient isolates worldwide (within this study, or matching another strain in the SITVIT2 database). An SIT number was attributed to each pattern according to the SITVIT2 database. As shown in additional file 2, among the 44 identified SITs, a total of 36 SITs (containing 173 isolates) matched a pre-existing shared type in the SITVIT2 database, whereas 8 SITs (containing 17 isolates) were new, either within the present study or after a match with an orphan in the database.

Among the 60 spoligotypes patterns characterized in the present study, 27 patterns corresponding to clusters with 2-43 isolates per cluster were identified, accounting for a very high clustering rate of 84% (173/206).

Linking the spoligotyping results and clade definitions to the distribution of clinical isolates within PGG1 versus PGG2/3 (the latter being easily characterized by the lack of spacers 33-36), showed that TB in Honduras is exclusively caused by modern tubercle bacilli, with SITs commonly found in USA, Europe, South & Central America, and the Caribbean.

The five predominant spoligotypes in our study were: SIT33 (LAM3) 20.9% > SIT42 (LAM9) 10.2% > SIT67 (H3) 8.7% > SIT53 (T1) 7.8% > SIT376 (LAM3) 5.8%. A full description of the predominant spoligotypes found is shown in Table 1. Latin American-Mediterranean (LAM) strains constitute the most predominant lineage in our study, their total number being very high (113/206, 54.9%) with the following distribution: LAM1 n = 2, LAM2 n = 1, LAM3 n = 72, LAM4 n = 1, LAM6 n = 4, LAM9 n = 33. Other lineages found were Haarlem (H) (34/206, 16.5%) with the following distribution: H1 n = 8, H2 n = 3, H3 n = 23; the ill-defined T family (33/206, 16.0%): T with sub-lineage distinction n = 3,

Table 1 Description of predominant shared-types (SITs) in this study and their worldwide distribution according SITVIT2 database

SIT (Clade) Octal Number ¹	Total (%) in this study	Distribution in Regions with ≥5% of a given SITs ²	Distribution in countries with ≥5% of a given SITs ³
33 (LAM3) 776177607760771	43 (20.9)	AFRI-S 32.0, AMER-S 22.1, AMER-N 15.9, EURO-S 13.6, EURO-W 5.4	ZAF 32.0, USA 15.7, BRA 8.9, ESP 8.8, ARG 5.6, PER 5.5
42 (LAM9) 77777607760771	21 (10.2)	AMER-S 29.8, AMER-N 16.3, EURO-S 12.8, EURO-W 7.0, AFRI-N 5.1	USA 15.25, BRA 10.3, COL 7.9, ITA 6.7
53 (T1) 77777777760771	16 (7.8)	AMER-N 19.8, AMER-S 14.5, EURO-W 12.8, EURO-S 10.0, ASIA-W 8.7, AFRI-S 6.5	USA 17.3, ZAF 6.4, ITA 5.1
67 (H3) 777777037720771	18 (8.7)	AMER-N 46.3, AMER-C 35.2, AMER-S 13.0, CAR 5.6	USA 44.4, HND 33.3, GUF 12.9
92 (X3) 700076777760771	5 (2.4)	AFRI-S 50.3, AMER-N 23.0, AMER-S 9.0	ZAF 50.3, USA 20.6, BRA 5.4
206 (LAM9) 740777607760771	6 (2.9)	AMER-N 50.0, AMER-C 42.9, EURO-W 7.1	USA 50.0, HND 42.9, BEL 7.1
376 (LAM3) 376177607760771	12 (5.8)	AMER-N 44.7, AMER-C 25.5, AMER-S 21.3	USA 44.68, HND 25.53, VEN 17.0
546 (X3) 700036777560771	5 (2.4)	AMER-N 57.1, AMER-C 35.7, AMER-S 7.1	USA 57.1, HND 35.7, PER 7.1
1328 (H1) 777777034020771	5 (2.4)	AMER-C 55.6, CAR 22.2, AMER-N 22.2	HND 55.6, USA 22.2, HTI 22.2

¹ Predominant shared types (SITs) were defined as SITs representing 2% or more strains in this dataset (i.e., 4 strains or more strains in this study).

² Worldwide distribution is only reported for regions with ≥5% of a given SITs as compared to their total number in the SITVIT2 database. Regions description [16]: AFRI (Africa), AMER (Americas), ASIA (Asia), EURO (Europe), and CARIB (Caribbean), subdivided in: C (Central), N (Northern), S (Southern) and W (Western).

³ Distribution by country is only shown for SITs with ≥5% in a given country: ARG (Argentina), BEL (Belgium), BRA (Brazil), COL (Colombia), ESP (Spain), GUF (French Guiana), HND (Honduras), HTI (Haiti), ITA (Italy), PER (Peru), USA (United States), VEN (Venezuela), ZAF (South Africa).

T1 n = 27, T4 n = 2, T5 n = 1; the X-clade (12/206, 5.8%): X1 n = 2, X3 n = 10; the S family n = 2; and the Beijing family n = 1. Furthermore, 11 strains had no known signatures.

RFLP results

All 43 strains within the main spoligotype cluster, belonging to the SIT 33 (LAM 3 genotype), were further characterized using RFLP IS6110. A total of 35 different fingerprints were identified, of which 29 (67.4%) were unique patterns. Six clusters with a total of 14 strains (2 to 3 strains per cluster) were identified (Figure 1). The average number of IS6110 copies was 12, with a range of 8-16 copies. Table 2 summarizes the clustered isolates' DST profile as well as their main demographic characteristics.

Population characteristics

Demographic information was available for 203 of the 206 TB cases (98.5%). Overall, 66.5% were male and 33.5% were female and the average age was 37 years

(SD: 17 years) with an age range of 11 to 85 years. Half of the cases belonged to the 20-40 years age group. The patients represented all major geographical regions of the country. The HIV serological status was known for 36% of the cases; 14.7% were HIV-positive and 21.2% were HIV-negative. The majority of patients (95%) had smear-positive pulmonary TB. All 10 patients with extra-pulmonary TB were HIV-positive. A majority of the patients (56.2%) were new, previously untreated cases, 8.3% had been previously treated and in 35.5% of the cases, previous treatment status was unknown.

One hundred seventy-four isolates (85.7%) were pan-susceptible and 29 (14.3%) showed resistance to at least one of the first-line drugs. Multidrug resistance (MDR), defined as resistance to at least RIF and INH, was detected in 8 isolates. Of those, two were also resistant to EMB, one isolate was also resistant to STM and 2 were additionally resistant to both EMB and STM.

Nineteen strains were monoresistant (5 to INH, 2 to RIF, 12 to STM) and 2 isolates had other susceptibility

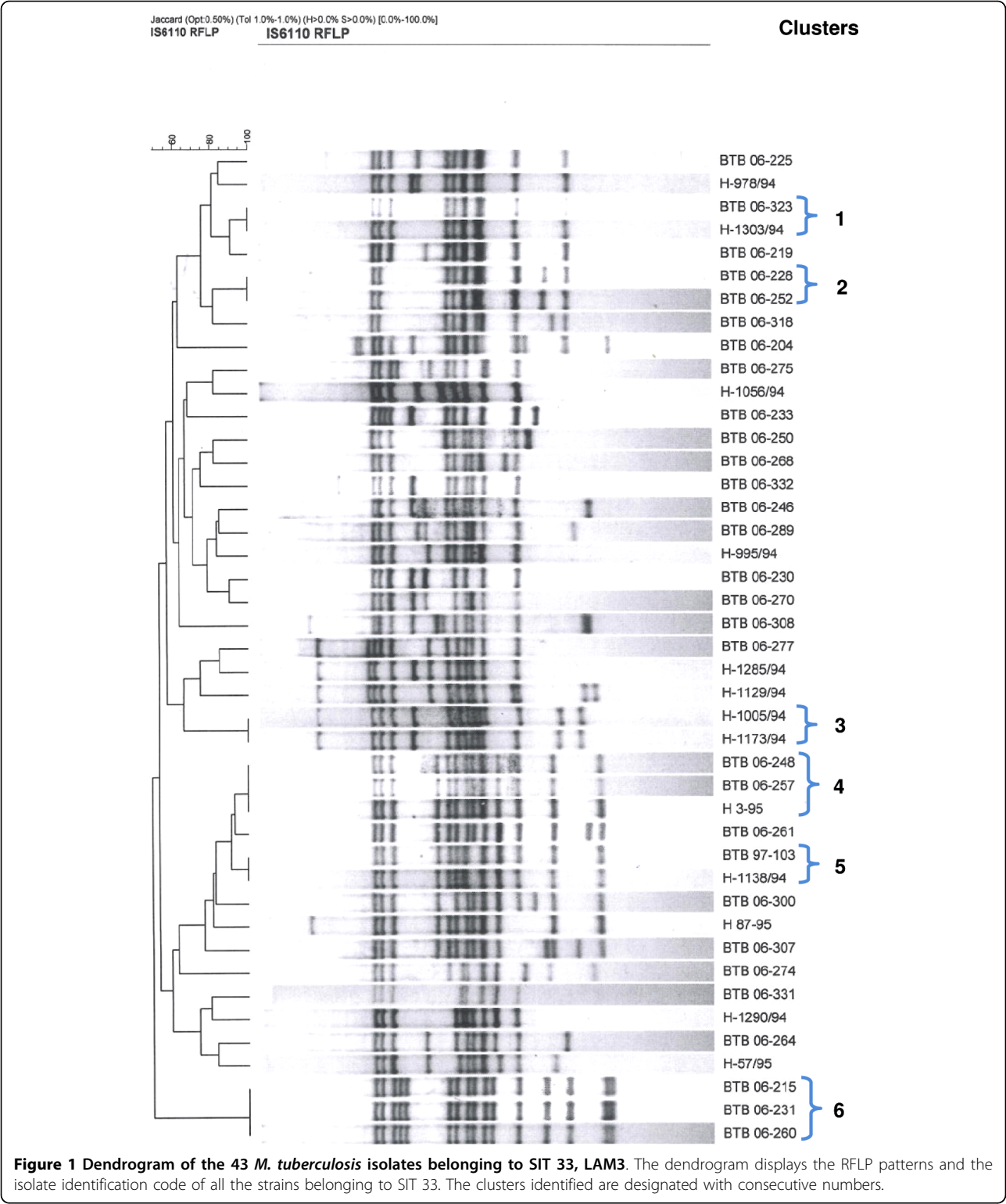


Table 2 Description of the RFLP clusters found among strains belonging to the SIT 33

RFLP cluster	Isolate	DST Profile				Sex	Age	Geographic Origin	
		STM	INH	RIF	EMB			Department	City
1	06-323	S	S	S	S	Male	34	Sta. Bárbara	Sta. Bárbara
	1303-94	S	S	S	S	Male	33	Choluteca	Marcovia
2	06-228	S	S	S	S	Male	29	Olancho	Juticalpa
	06-252	S	S	S	S	Female	62	Olancho	Catacamas
3	1005-94	R	R	R	R	Male	23	Fco. Morazán	Tegucigalpa
	1173-94	R	R	R	R	Male	29	Fco. Morazán	Tegucigalpa
4	06-248	S	S	S	S	Male	30	Cortés	San Pedro Sula
	06-257	S	S	S	S	Female	26	Fco. Morazán	Tegucigalpa
	3-95	S	S	S	S	Male	19	Fco. Morazán	Cedros
5	97-103	S	S	S	S	Male	20	Fco. Morazán	Tegucigalpa
	1138-94	S	S	S	S	Male	34	Fco. Morazán	Tegucigalpa
6	06-215	S	S	R	R	Male	57	Comayagua	Siguetepeque
	06-231	S	S	S	S	Male	22	Copán	La Entrada
	06-260	S	S	S	S	Female	22	Cortés	San Pedro Sula

patterns (one was RIF + STM resistant and the other was INH + STM resistant).

The single Beijing strain identified in this sample was susceptible to all drugs and was isolated from a female patient, 30 years of age, with pulmonary TB and unknown HIV status.

The distribution of spoligopatterns was not associated to gender or geographic origin (Table 3). When analyzing the mean age of patients harboring the predominant spoligotypes, we found that the mean age of cases belonging to SIT 33 was not significantly different from the rest of the study population (37.8 vs. 36.9 years old, $p = 0.79$), nor was it different when compared to the mean age of cases belonging to the other predominant SITs (data not shown).

The distribution of the spoligotype families between the two groups of isolates characterized was very similar to the overall distribution within the country, as shown in Figure 2. The overall proportion of clustered strains in this study was 84%, with a clustering rate of 80% in group I isolates and 87% in group II isolates.

Discussion

This study included a total of 206 *M. tuberculosis* strains isolated from the same number of patients in Honduras and were collected during two different time periods (1994-1998 and 2002). All isolates were spoligotyped in order to identify the predominant genotypes within this subpopulation, as well as to compare the distribution of genotypes to the spoligotypes recorded in the SITVIT2

proprietary database of the Institut Pasteur de la Guadeloupe.

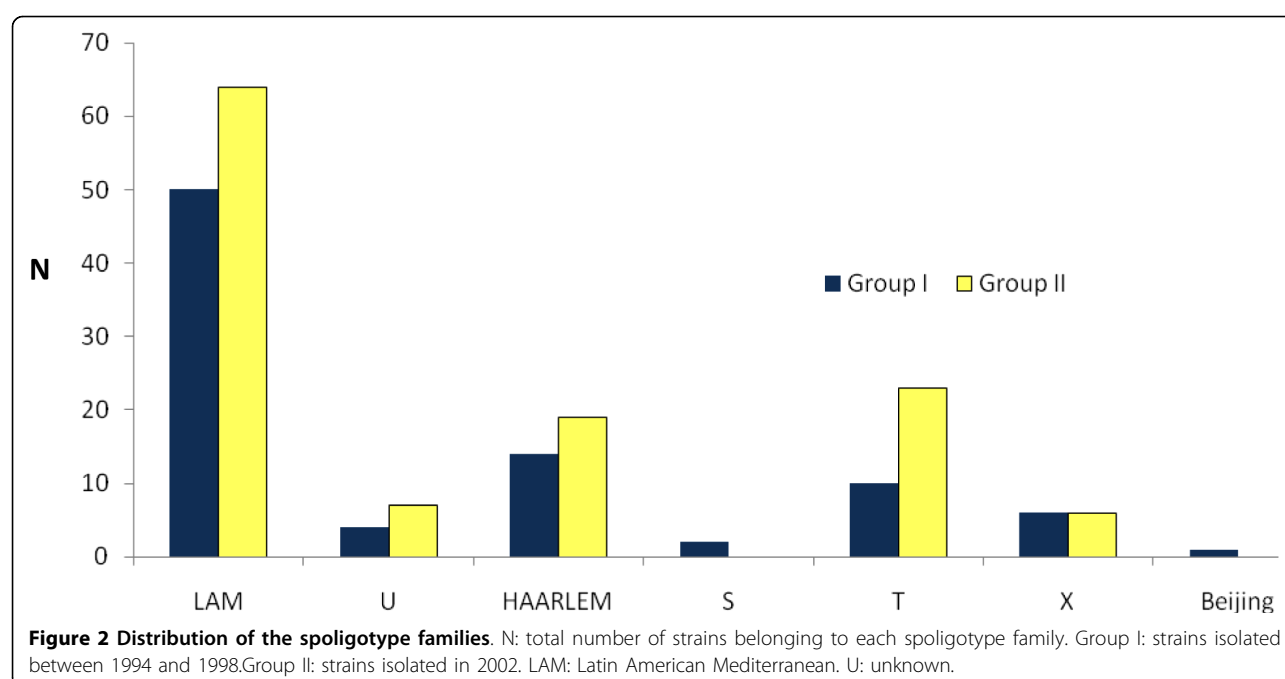
In Honduras, the LAM family was the most prevalent, with more than 50% of all patient isolates characterized belonging to this specific genotype. Thereafter the

Table 3 Demographic characteristics of the study population and their association with spoligotype clustering

Parameter	Spoligotyping patterns		OR (95%CI)	p-value
	Clustered	Unique		
Sex				
Male	115	20	1.23	0.75
Female	56	12	(0.52 -2.88)	
Age ¹				
<35 years	96	18	0.94	0.97
>35 years	74	13	(0.40 - 2.17)	
Tuberculosis localization				
Pulmonary	164	29	2.42	0.20
Extra-pulmonary	7	3	(0.46 - 11.30)	
HIV status				
Positive	24	6	NA ²	0.76
Negative	36	7		
Unknown	111	19		
DST profile				
Any Resistance	27	2	2.81	0.27
Susceptible	144	30	(0.60- 18.09)	

¹ Age information was missing for 2 out of 203 patients.

² NA = Not applicable



Haarlem and T clades were most common. The remaining genotypes contributed to only 13% of all isolates. These results are similar to previous studies in which these three genotypes have been seen to be predominant among TB cases in Mexico [22], South America [23-28] and the Caribbean [29]. However, there is limited information available regarding Central American MTC isolates, of which most information is based on TB cases detected among Central American immigrants in United States [30] and Canada [31]. Therefore, our study is providing a first characterization of the distribution of TB isolates within Honduras. Establishing such a baseline distribution of isolates will be useful for future genotyping investigations in Honduras as well as neighboring Central American countries.

According to the more recent genotype classification, which is based on large sequence polymorphisms in the MTC genome [30], the Euro-American lineage comprises the LAM, Haarlem, T and X spoligotyping-defined families. These phylogenetic clades are commonly included in the PGG 2 and 3 described by Sreevatsan *et al* [18,32]. Indeed, the most predominant clades in our study comprised PGG2/3 lineages: only 0, 5% of the isolates belonged to PGG1 (ancient lineages) as compared to 77% to the PGG2/3 (modern lineages).

These findings indicate that ongoing TB transmission in Honduras is mainly attributable to modern *M. tuberculosis* lineages. The evolutionary modern LAM-lineage was the most predominant among all lineages in this study and, having identified several LAM sub-lineages, was furthermore characterized by a high level of

biodiversity. Indeed, of the 12 LAM- sub-lineages so far reported worldwide [14], a total of six (LAM1, 2, 3, 4, 6, and 9) were identified among this study's sample of Honduran TB patient isolates. A level of biodiversity was also observed within the PGG2/3 clades (X and H); however this was to a lesser extent. The "T" genotype has previously been defined to include strains that may not be classified in one of the established PGG2/3 genotypic lineages [14], was mostly represented in our study by its T1 sub-lineage.

All the spoligotypes not earlier described (orphans and new SITs) belong to PGG 2 and 3. The observation that a minimal number of PGG1 strains such as the EAI, CAS, Manu, Beijing (with only a single Beijing isolate, Table 2), *M. africanum* and *M. bovis* were identified in this study is noteworthy.

In Latin America, the prevalence of the Beijing genotype is low [22-25,33,34], especially if compared with Asian and East-European countries. The presence of only one, fully-susceptible, Beijing strain in our sample supports these findings.

To obtain a more complete and precise definition of isolate clusters, it is recommended to combine at least two genotyping techniques [35,36]. By using RFLP IS6110 to further characterize the major cluster identified in our study which comprised isolates from both group I and II, (the SIT 33 belonging to the LAM family), we observed a high degree of diversity among the 43 isolates analyzed. These findings were in agreement with the first genotyping study in Honduras [8]. Interestingly, the only RFLP cluster of MDR strains seen

in this study belonged to group I, i.e., isolates from the mentioned first genotyping study [8]. This might indicate that the presence of MDR-TB in the country is due to acquired resistance.

A limitation within this study was the use of a relatively small sample size, representing approximately 1% of the total number of TB cases diagnosed in the country during the same period of time. Such sample size, can underestimate the clustering proportion [37,38]. Nevertheless, as explained below, we believe that the isolates characterized in this study were most likely representative of the overall distribution in the country. The isolates collected in 2002 (group II) were collected and cultured from smear positive Honduran patients using the cluster sampling method recommended by WHO/IUATLD guidelines for drug-resistance surveys [39]. Isolates in group I (samples from 1994-1998), although collected at the INCP in a specific setting, were geographically diverse as most chronic-diseased patients were referred to the national hospital from several regions in the country.

As information regarding epidemiological links between patients as well as risk behaviors could not be recovered, only a broad description of the genotypes' distribution within Honduras could be provided in this study. Another area of interest for further studies would be to assess the impact of HIV infection on TB transmission dynamics within Honduras.

Conclusions

Spoligotyping has proven to be a useful genotyping method for the characterization of the MTC population structure in Honduras. The current study identified the LAM family as the most common spoligotype circulating in this setting. Furthermore, the high biodiversity, as demonstrated through the identification of several sub-lineages usgin RFLP, is a reflection of the LAM-family's adaptation to the host population over time.

However, prospective investigations, combined with contact-tracing and epidemiological linking, are required in order to obtain a more detailed molecular-epidemiological overview of TB transmission within Honduras.

Additional material

Additional file 1: Description of 16 orphan *M. tuberculosis* strains identified in Honduras.

Additional file 2: Description of 44 shared spoligotypes (SITs) identified among *M. tuberculosis* isolates from Honduras. This table summarizes genotypic clade designations and percentage distribution of all SITs present in this study.

Acknowledgements

This study was supported by the Swedish International Development Cooperation Agency (Sida) [Sida Contribution No: 75007345].

We thank the staff of the National TB Reference Laboratory of Honduras, particularly to Hilda Membreño and Nery Almendarez, for providing the information and the clinical isolates of the survey of tuberculosis drug-resistance. S. Rosales thanks Maria Wijkander for technical assistance with the spoligotyping testing at SML.

N. Rastogi is grateful to the Regional Council of Guadeloupe (project CR/08-1612) for a research grant and to Véronique Hill (Institut Pasteur de la Guadeloupe) for helping with SITVIT2 database management and query. We thank Emma Huitric for critical review of the manuscript.

Author details

¹Escuela de Microbiología, Universidad Nacional Autónoma de Honduras, Tegucigalpa, Honduras. ²Division of Global Health (IHCAR), Department of Public Health Sciences, Karolinska Institutet, Stockholm, Sweden. ³Department of Bacteriology, Swedish Institute for Infectious Disease Control, Solna, Sweden. ⁴Department of Microbiology, Tumor and Cell Biology (MTC), Karolinska Institutet, Stockholm, Sweden. ⁵Unité de la Tuberculose et des Mycobactéries, Institut Pasteur de la Guadeloupe, Abymes, Guadeloupe.

Authors' contributions

SR participated in the design of the study, performed and analyzed spoligotyping, collected epidemiologic data, conducted the statistical analysis and wrote the manuscript. LPG participated in the study design, carried out mycobacteriological diagnostics, isolation, identification and drug susceptibility testing of clinical isolates, collected epidemiological information, data analysis and provided critical comments for the manuscript. SG performed and analyzed RFLP; carried out bioinformatics analysis of spoligotyping and RFLP results. NR performed database analysis of the spoligotypes and helped draft the manuscript. SEH participated in the design of the study, analyzed the data and helped draft the manuscript. All authors read and approved the final version of the manuscript.

Competing interests

The authors declare that they have no competing interests.

Received: 7 April 2010 Accepted: 3 August 2010

Published: 3 August 2010

References

1. Instituto Nacional de Estadística de Honduras. [http://www.ine-hn.org/].
2. Varela-Martinez C: Plan estratégico nacional para el control de la tuberculosis. PENTB 2009 - 2015. Resumen. *Rev Med Hondur* 2010, **78**(1):39-48.
3. Alland D, Kalkut GE, Moss AR, McAdam RA, Hahn JA, Bosworth W, Drucker E, Bloom BR: Transmission of tuberculosis in New York City. An analysis by DNA fingerprinting and conventional epidemiologic methods. *N Engl J Med* 1994, **330**:1710-1716.
4. Small PM, Hopewell PC, Singh SP, Paz A, Parsonnet J, Ruston DC, Schechter GF, Daley CL, Schoolnik GK: The epidemiology of tuberculosis in San Francisco. A population-based study using conventional and molecular methods. *N Engl J Med* 1994, **330**:1703-1709.
5. Hermans PW, van Soolingen D, Dale JW, Schuitema AR, McAdam RA, Catty D, van Embden JD: Insertion element IS986 from *Mycobacterium tuberculosis*: a useful tool for diagnosis and epidemiology of tuberculosis. *J Clin Microbiol* 1990, **28**:2051-2058.
6. van Embden JD, Cave MD, Crawford JT, Dale JW, Eisenach KD, Gicquel B, Hermans P, Martin C, McAdam R, Shinnick TM, Small PM: Strain identification of *Mycobacterium tuberculosis* by DNA fingerprinting: recommendations for a standardized methodology. *J Clin Microbiol* 1993, **31**:406-409.
7. Kamerbeek J, Schouls L, Kolk A, van Agterveld M, van Soolingen D, Kuijper S, Bunschoten A, Molhuizen H, Shaw R, Goyal M, van Embden J: Simultaneous detection and strain differentiation of *Mycobacterium tuberculosis* for diagnosis and epidemiology. *J Clin Microbiol* 1997, **35**:907-914.
8. Pineda-García L, Ferrera A, Hoffner SE: DNA fingerprinting of *Mycobacterium tuberculosis* strains from patients with pulmonary tuberculosis in Honduras. *J Clin Microbiol* 1997, **35**:2393-2397.
9. WHO: Anti-Tuberculosis drug resistance in the world. Report No.3. WHO/HTM/TB/2004.343. Geneva, World Health Organization 2004.

10. Kent PT, Kubica GP: *Public Health mycobacteriology: a guide for level III laboratory* Atlanta, GA.: U.S Department of Health and Human Services, Centers for Disease Control and Prevention 1985.
11. Roberts GD, Goodman NL, Heifets L, Larsh HW, Lindner TH, McClatchy JK, McGinnis MR, Siddiqui SH, Wright P: **Evaluation of the BACTEC radiometric method for recovery of mycobacteria and drug susceptibility testing of *Mycobacterium tuberculosis* from acid-fast smear-positive specimens.** *J Clin Microbiol* 1983, **18**:689-696.
12. Canetti G, Froman S, Grosset J, Hauduroy P: **Mycobacteria: Laboratory methods for testing drug sensitivity and resistance.** *Bull Wld Hlth Org* 1963, **29**:565-568.
13. van Soolingen D, Hermans PW, de Haas PEW, Soll DR, van Embden JD: **Occurrence and stability of insertion sequences in *Mycobacterium tuberculosis* complex strains: evaluation of an insertion sequence-dependent DNA polymorphism as a tool in the epidemiology of tuberculosis.** *J Clin Microbiol* 1991, **29**:2578-2586.
14. Brudey K, Driscoll JR, Rigouts L, Prodinger WM, Gori A, Al-Hajj SA, Allix C, Aristimuno L, Arora J, Baumanis V, Binder L, Cafrune P, Cataldi A, Cheong S, Diel R, Ellermeyer C, Evans JT, Fauville-Dufaux M, Ferdinand S, Garcia de Viedma D, Garzelli C, Gazzola L, Gomes HM, Gutierrez MA, Hawkey PM, van Helden PD, Kadival GV, Kreiswirth BN, Kremer K, Kubin M, Kulkarni SP, Liens B, Lillebaek T, Ly HM, Martin C, Martin C, Moskrousov I, Narvskaja O, Ngeow YF, Naumann L, Niemann S, Parwati I, Rahim Z, Rasolofo-Razanamparany V, Rasolonavalona T, Rossetti ML, Rüscher-Gerdes S, Sajduda A, Samper S, Shemyakin IG, Singh US, Somoskovi A, Skuce RA, van Soolingen D, Streicher EM, Suffys PN, Tortoli E, Tatjana Tracevska, Vincent V, Victor TC, Warren RM, Yap SF, Zaman K, Portaels F, Rastogi N, Sola C: **Mycobacterium tuberculosis complex genetic diversity: mining the fourth international spoligotyping database (SpolDB4) for classification, population genetics and epidemiology.** *BMC Microbiol* 2006, **6**:23.
15. SITVIT Database. [http://www.pasteur-guadeloupe.fr:8081/SITVITDemo/].
16. United Nations. [http://unstats.un.org/unsd/methods/m49/m49regin.htm].
17. ISO 3166-1 alpha-3 codes. [http://en.wikipedia.org/wiki/ISO_3166-1_alpha-3].
18. Sreevatsan S, Pan X, Stockbauer KE, Connell ND, Kreiswirth BN, Whittam TS, Musser JM: **Restricted structural gene polymorphism in the *Mycobacterium tuberculosis* complex indicates evolutionarily recent global dissemination.** *Proc Natl Acad Sci USA* 1997, **94**:9869-9874.
19. Brosch R GS, Marmiesse M, Brodin P, Buchrieser C, Eiglmeier K, Garnier T, Gutierrez C, Hewinson G, Kremer K, Parsons LM, Pym AS, Samper S, van Soolingen D, Cole ST: **A new evolutionary scenario for the *Mycobacterium tuberculosis* complex.** *Proc Natl Acad Sci USA* 2002, **99**:3684-3689.
20. Soini H, Pan X, Amin A, Graviss EA, Siddiqui A, Musser JM: **Characterization of *Mycobacterium tuberculosis* isolates from patients in Houston, Texas, by spoligotyping.** *J Clin Microbiol* 2000, **38**:669-676.
21. Rastogi N, Sola C: **Molecular evolution of the *Mycobacterium tuberculosis* complex.** *Tuberculosis Palomino JC, Leao S, Ritacco V* 2007 [http://www.TuberculosisTextbook.com].
22. Molina-Torres CA, Moreno-Torres E, Ocampo-Candiani J, Rendon A, Blackwood K, Kremer K, Rastogi N, Welsh O, Vera-Cabrera L: **Mycobacterium tuberculosis spoligotypes in Monterrey, Mexico.** *J Clin Microbiol* 2010, **48**(2):448-455.
23. Aristimuno L, Armengol R, Cebollada A, España M, Guilarte A, Lafoz C, Lezcano MA, Revillo MJ, Martin C, Ramirez C, Rastogi N, Rojas J, Vazquez de Salas A, Sola C, Samper S: **Molecular characterisation of *Mycobacterium tuberculosis* isolates in the First National Survey of Anti-tuberculosis Drug Resistance from Venezuela.** *BMC Microbiol* 2006, **6**:90.
24. Candia N, Lopez B, Zozio T, Carrivale M, Diaz C, Russomando G, de Romero NJ, Jara JC, Barrera L, Rastogi N, Ritacco V: **First insight into *Mycobacterium tuberculosis* genetic diversity in Paraguay.** *BMC Microbiol* 2007, **7**:75.
25. Abadia E, Sequera M, Ortega D, Mendez MV, Escalona A, Da Mata O, Izarra E, Rojas Y, Jaspe R, Motiwala AS, Alland D, de Waard J, Takiff HE: **Mycobacterium tuberculosis ecology in Venezuela: epidemiologic correlates of common spoligotypes and a large clonal cluster defined by MIRU-VNTR-24.** *BMC Infect Dis* 2009, **9**:122.
26. Von Groll A, Martin A, Felix C, Sanmartin Prata PF, Honscha G, Portaels F, Vandame P, Almeida da Silva PE, Palomino JC: **Fitness study of the RD(Rio) lineage and Latin American-Mediterranean family of *Mycobacterium tuberculosis* in the city of Rio Grande, Brazil.** *FEMS Immunol Med Microbiol* 2009.
27. Dalla Costa ER, Ribeiro MO, Silva MS, Arnold LS, Rostirolla DC, Cafrune PI, Espinoza RC, Palaci M, Telles MA, Ritacco V, Suffys PN, Lopes ML, Campelo CL, Miranda SS, Kremer K, Almeida da Silva PE, de Souza Fonseca L, Ho JL, Kritski AL, Rossetti MLR: **Correlations of mutations in katG, oxyR-ahpC and inhA genes and in vitro susceptibility in *Mycobacterium tuberculosis* clinical strains segregated by spoligotype families from tuberculosis prevalent countries in South America.** *BMC Microbiol* 2009, **9**:39.
28. Guernier V, Sola C, Brudey K, Guegan JF, Rastogi N: **Use of cluster-graphs from spoligotyping data to study genotype similarities and a comparison of three indices to quantify recent tuberculosis transmission among culture positive cases in French Guiana during a eight year period.** *BMC Infect Dis* 2008, **8**:46.
29. Baboolal S, Millet J, Akpaka PE, Ramoutar D, Rastogi N: **First insight into *Mycobacterium tuberculosis* epidemiology and genetic diversity in Trinidad and Tobago.** *J Clin Microbiol* 2009, **47**:1911-1914.
30. Gagneux S, DeRiemer K, Van T, Kato-Maeda M, de Jong BC, Narayanan S, Nicol M, Niemann S, Kremer K, Gutierrez MC, Hilty M, Hopewell PC, Small PM: **Variable host-pathogen compatibility in *Mycobacterium tuberculosis*.** *Proc Natl Acad Sci USA* 2006, **103**:2869-2873.
31. Reed MB, Pichler VK, McIntosh F, Mattia A, Fallow A, Masala S, Domenech P, Tzwerling A, Thibert L, Menzies D, Schwartzman K, Behr MA: **Major *Mycobacterium tuberculosis* lineages associate with patient country of origin.** *J Clin Microbiol* 2009, **47**:1119-1128.
32. Gagneux S, Small PM: **Global phylogeography of *Mycobacterium tuberculosis* and implications for tuberculosis product development.** *Lancet Infect Dis* 2007, **7**:328-337.
33. Ritacco V, Lopez B, Cafrune PI, Ferrazoli L, Suffys PN, Candia N, Vasquez L, Realpe T, Fernandez J, Lima KV, Zurita J, Robledo J, Rossetti ML, Kritski AL, Telles MA, Palomino JC, Heersma H, van Soolingen D, Kremer K, Barrera L: **Mycobacterium tuberculosis strains of the Beijing genotype are rarely observed in tuberculosis patients in South America.** *Mem Inst Oswaldo Cruz* 2008, **103**:489-492.
34. Morcillo N, Zumarraga M, Imperiale B, Di Giulio B, Chirico C, Kuriger A, Alito A, Kremer K, Cataldi A: **Tuberculosis transmission of predominant genotypes of *Mycobacterium tuberculosis* in northern suburbs of Buenos Aires city region.** *Rev Argent Microbiol* 2007, **39**:145-150.
35. Sola C, Ferdinand S, Mammina C, Nastasi A, Rastogi N: **Genetic diversity of *Mycobacterium tuberculosis* in Sicily based on spoligotyping and variable number of tandem DNA repeats and comparison with a spoligotyping database for population-based analysis.** *J Clin Microbiol* 2001, **39**:1559-1565.
36. Soini H, Pan X, Teeter L, Musser JM, Graviss EA: **Transmission dynamics and molecular characterization of *Mycobacterium tuberculosis* isolates with low copy numbers of IS6110.** *J Clin Microbiol* 2001, **39**:217-221.
37. Glynn JR, Bauer J, de Boer AS, Borgdorff MW, Fine PE, Godfrey-Faussett P, Vynnycky E: **Interpreting DNA fingerprint clusters of *Mycobacterium tuberculosis*.** *European Concerted Action on Molecular Epidemiology and Control of Tuberculosis. Int J Tuberc Lung Dis* 1999, **3**:1055-1060.
38. Murray M: **Sampling bias in the molecular epidemiology of tuberculosis.** *Emerg Infect Dis* 2002, **8**:363-369.
39. WHO: **Guidelines for surveillance of drug resistance in tuberculosis, WHO/CDS/TB/2003.320.** Geneva. World Health Organization 2003.

doi:10.1186/1471-2180-10-208

Cite this article as: Rosales et al.: Molecular diversity of *Mycobacterium tuberculosis* isolates from patients with tuberculosis in Honduras. *BMC Microbiology* 2010 **10**:208.

Research article

Open Access

Molecular diversity of *Mycobacterium tuberculosis* isolates from patients with tuberculosis in Honduras

Senia Rosales^{1,2,3} ✉, Lelany Pineda-García¹ ✉, Solomon Ghebremichael^{3,4} ✉, Nalin Rastogi⁵ ✉ and Sven E Hoffner^{3,4} ✉

¹ Escuela de Microbiología, Universidad Nacional Autónoma de Honduras, Tegucigalpa, Honduras

² Division of Global Health (IHCAR), Department of Public Health Sciences, Karolinska Institutet, Stockholm, Sweden

³ Department of Bacteriology, Swedish Institute for Infectious Disease Control, Solna, Sweden

⁴ Department of Microbiology, Tumor and Cell Biology (MTC), Karolinska Institutet, Stockholm, Sweden

⁵ Unité de la Tuberculose et des Mycobactéries, Institut Pasteur de la Guadeloupe, Abymes, Guadeloupe

✉ author email ✉ corresponding author email

BMC Microbiology 2010, **10**:208 doi:10.1186/1471-2180-10-208

Published: 3 August 2010

Additional files

Additional file 1:

Description of 16 orphan *M. tuberculosis* strains identified in Honduras.

Format: PDF Size: 29KB [Download file](#)

This file can be viewed with: [Adobe Acrobat Reader](#)

OPEN DATA

Additional file 2:

Description of 44 shared spoligotypes (SITs) identified among *M. tuberculosis* isolates from Honduras. This table summarizes genotypic clade designations and percentage distribution of all SITs present in this study.

Format: PDF Size: 45KB [Download file](#)

This file can be viewed with: [Adobe Acrobat Reader](#)

Additional file 1. Description of 16 orphan *M. tuberculosis* strains identified in Honduras

Year	Strain Number	Spoligotype Description	Octal code	Clade ¹	Sex/ Age	Drug Resistance
2002	06-216	■■■■■■■■■■■■■■■■■□□□□□□■□■■■■□□□□■■■□■■■	777777400760731	Unk	M/45	STM
2002	06-226	■■■■■■■■■■■■■■■■■□□□□■■■■■■■■■■□□□□□□□■■■	777777037740071	T1	M/44	-
1997	97-120	■■■■■■■□□□■■■□■■■■□□□□■■■■■■■■■■□□□□■■■□■■■	776167607760711	LAM3	M/36	-
1997	97-110	■■■□□□□□□□□□■□■■■■□□□□■■■■■■■■■■□□□□■■■□■■■	700027607760731	LAM3	M/61	-
2002	06-333	■■■■■■□□□■■■■■■■■■■■■□□□□■■■■■■■■■■□□□□■■■■■■	770777607760771	LAM9	M/50	-
2002	06-239	■■□□■■■■■■■■■□■□■■■■□□□□■■■■■■■■■■□□□□■■■■■■	637727607760771	LAM2	F/27	RIF
1994	1240-94	□■■■■■■■□□□■■■■■■■■■■□□□□□□□■■■□□□□■■■■■■	376177600360771	LAM3	M/38	-
1994	1367-94	■■■■■■■□□□□■■■□■□□■□■■■□□□□■■■□□□□■■■■■■	776066663020771	H3	M/33	-
2002	06-319	■■■■■■■■■■■■■■■■■■□□□□■■■■■■■■■□■□□■■■■■■■■■	777777037723771	H3	M/49	-
2002	06-262	■■■■■■■■■■■■■■■□□□□□□□□□□□□■□□□□■■■■■■	777774000060771	Unk	M/15	-
1994	1166-94	■■■■■■■□□□■■■■■■■■■■□□□□■■■□□□□□□□□■■■■■■	776177607000771	LAM3	M/33	-
2002	06-265	■■■■■■■■■■■■■□■■■■■□■■■□■■■■■■■■■■□□□□■■■■■■	777737347760771	T	M/17	-
1997	97-104	■■■■□□□□■■■■■■■□■□□□□□□■■■□■■■□□□□■■■■■■	741765047560771	Unk	M/37	-
2002	06-222	■■■■■□□□□□□□□□□□□□□□□□□□□□□□■■■■■■	760000000000771	Unk	M/41	STM
2002	06-232	■■■□□■■■■■■■■■■■■■■■□■□■■■■■■■■■■□□□□□□□■■■	637777637760031	T1	F/29	-
1994	1064-94	■■■■□■■■■■■■□□■■■■■■□■□■■■■■■■■■■□□□□■■■■■■	757717637760771	T1	F/30	-

¹ Clade designations according to SITVIT2 using revised SpoIDB4 rules [14]; Unk= Unknown patterns. STM= streptomycin; RIF= rifampicin.

Additional File 2. Description of 44 shared spoligotypes (SITs) identified among *M. tuberculosis* isolates from Honduras.

SIT ¹	Spoligotype Description	Octal Number	Number (%) in this study	Clade ²	Clustered vs. unique patterns ³
1	□□□□□□□□□□□□□□□□□□□□□□□□□□■□□□□□□□□	000000000003771	1 (0.5)	Beijing	Unique
2	□□□□□□□□□□□□□□□□□□□□■□□□□□□□□□□□□□□	000000004020771	3 (1.5)	H2	Clustered
33	■□□□□□□□□□■□□□□□□□□□□□□□□□□□□□□□□□	776177607760771	43 (20.9)	LAM3	Clustered
34	■□□□□□□□□□■□□□□□□□□□□□□□□□□□□□□□□□	776377777760771	1 (0.5)	S	Unique
42	■□□□□□□□□□□□□□□□□□□□□□□□□□□□□□□□□	777777607760771	21 (10.2)	LAM9	Clustered
46	■□□□□□□□□□□□□□□□□□□□□□□□□□□□□□□□□	777777770000000	3 (1.4)	Unk	Clustered
47	■□□□□□□□□□□□□□□□□□□□□□□□□□□□□□□□□	77777774020771	1 (0.5)	H1	Unique
53	■□□□□□□□□□□□□□□□□□□□□□□□□□□□□□□□□	777777777760771	16 (7.8)	T1	Clustered
60	■□□□□□□□□□□□□□□□□□□□□□□□□□□□□□□□□	777777607760731	1 (0.5)	LAM4	Unique
64	■□□□□□□□□□□□□□□□□□□□□□□□□□□□□□□□□	777777607560771	1 (0.5)	LAM6	Unique
67	■□□□□□□□□□□□□□□□□□□□□□□□□□□□□□□□□	777777037720771	18 (8.7)	H3	Clustered
71	■□□□□□□□□□■□□□□□□□□□□□□□□□□□□□□□□□	776337777760771	1 (0.5)	S	Unique
73	■□□□□□□□□□■□□□□□□□□□□□□□□□□□□□□□□□	777737777760731	2 (0.9)	T	Clustered
92	■□□□□□□□□□■□□□□□□□□□□□□□□□□□□□□□□□	700076777760771	5 (2.4)	X3	Clustered
111	■□□□□□□□□□■□□□□□□□□□□□□□□□□□□□□□□□	776167607760771	2 (0.9)	LAM3	Clustered
118	■□□□□□□□□□■□□□□□□□□□□□□□□□□□□□□□□□	777767777760771	2 (0.9)	T1	Clustered
119	■□□□□□□□□□■□□□□□□□□□□□□□□□□□□□□□□□	777776777760771	1 (0.5)	X1	Unique
130	■□□□□□□□□□■□□□□□□□□□□□□□□□□□□□□□□□	776177607760731	3 (1.5)	LAM3	Clustered
150	■□□□□□□□□□■□□□□□□□□□□□□□□□□□□□□□□□	777767607760771	2 (0.9)	LAM9	Clustered
174	■□□□□□□□□□■□□□□□□□□□□□□□□□□□□□□□□□	777777037760771	1 (0.5)	Unk	Unique
176	■□□□□□□□□□■□□□□□□□□□□□□□□□□□□□□□□□	777737607560771	1 (0.5)	LAM6	Unique
206	■□□□□□□□□□■□□□□□□□□□□□□□□□□□□□□□□□	740777607760771	6 (2.9)	LAM9	Clustered
218	■□□□□□□□□□■□□□□□□□□□□□□□□□□□□□□□□□	777737774020771	1 (0.5)	H1	Unique
291	■□□□□□□□□□■□□□□□□□□□□□□□□□□□□□□□□□	777777677760771	1 (0.5)	T1	Unique
294	■□□□□□□□□□■□□□□□□□□□□□□□□□□□□□□□□□	577777777720771	3 (1.5)	H3	Clustered
376	□■□□□□□□□□■□□□□□□□□□□□□□□□□□□□□□□□	376177607760771	12 (5.8)	LAM3	Clustered
546	■□□□□□□□□□■□□□□□□□□□□□□□□□□□□□□□□□	700036777560771	5 (2.4)	X3	Clustered
635	□□□□□□□□□□□□□□□□□□□□■□□□□□□□□□□□□□□	000000007560771	1 (0.5)	LAM3	Unique
950	■□□□□□□□□□■□□□□□□□□□□□□□□□□□□□□□□□	700037607760771	2 (0.9)	LAM3	Clustered
1156	■□□□□□□□□□■□□□□□□□□□□□□□□□□□□□□□□□	636377607760771	2 (0.9)	LAM1	Clustered
1179	■□□□□□□□□□■□□□□□□□□□□□□□□□□□□□□□□□	777776776360771	1 (0.5)	X1	Unique
1328	■□□□□□□□□□■□□□□□□□□□□□□□□□□□□□□□□□	777777034020771	5 (2.4)	H1	Clustered
1354	■□□□□□□□□□■□□□□□□□□□□□□□□□□□□□□□□□	576177607760771	1 (0.5)	LAM3	Unique
1536	■□□□□□□□□□■□□□□□□□□□□□□□□□□□□□□□□□	776377607760771	1 (0.5)	LAM9	Unique
2151	■□□□□□□□□□■□□□□□□□□□□□□□□□□□□□□□□□	777777347760771	2 (0.9)	T4	Clustered
3008	■□□□□□□□□□■□□□□□□□□□□□□□□□□□□□□□□□	776777774020771	1 (0.5)	H1	Unique
3081*	■□□□□□□□□□■□□□□□□□□□□□□□□□□□□□□□□□	766073777760771	3 (1.5)	T1	Clustered
3082*	■□□□□□□□□□■□□□□□□□□□□□□□□□□□□□□□□□	776071777760771	2 (0.9)	T1	Clustered
3083*	□■□□□□□□□□■□□□□□□□□□□□□□□□□□□□□□□□	376177407760771	2 (0.9)	LAM3	Clustered
3084*	□■□□□□□□□□■□□□□□□□□□□□□□□□□□□□□□□□	376177607760371	2 (0.9)	LAM3	Clustered
3085*	■□□□□□□□□□■□□□□□□□□□□□□□□□□□□□□□□□	775777607760771	2 (0.9)	LAM9	Clustered
3086*	■□□□□□□□□□■□□□□□□□□□□□□□□□□□□□□□□□	741775047560771	3 (1.5)	Unk	Clustered
3087*	■□□□□□□□□□■□□□□□□□□□□□□□□□□□□□□□□□	777701003560771	2 (0.9)	LAM6	Clustered
3088*	■□□□□□□□□□■□□□□□□□□□□□□□□□□□□□□□□□	577777757760771	1 (0.5)	T5	Unique

¹ SIT followed by an asterisk indicates "newly identified shared-type". SITs 3081, 3082, 3084, 3086 and 3087 include strains with identical new patterns within this study. SITs 3083, 3085 and 3088 include Honduran new spoligotypes matching orphan patterns from Brazil, The Netherlands and Italy, respectively.

²Clade designations according to SITVIT2 using revised SpolDB4 rules [14]; Unk= Unknown patterns.

³Clustered patterns correspond to isolates with identical spoligotypes within this study; unique patterns did not match with another spoligotype identified in this study.