



**HAL**  
open science

## **Spoligotyping of clinical Mycobacterium tuberculosis isolates from the state of Minas Gerais, Brazil.**

Silvana Spíndola De Miranda, Wânia da Silva Carvalho, Philip Noel Suffys, Afrânio Lineu Kritski, Martha Oliveira, Noemi Zarate, Thierry Zozio, Nalin Rastogi, Brigitte Gicquel

► **To cite this version:**

Silvana Spíndola De Miranda, Wânia da Silva Carvalho, Philip Noel Suffys, Afrânio Lineu Kritski, Martha Oliveira, et al.. Spoligotyping of clinical Mycobacterium tuberculosis isolates from the state of Minas Gerais, Brazil.. *Memórias do Instituto Oswaldo Cruz*, 2011, 106 (3), pp.267-73. 10.1590/S0074-02762011000300003 . pasteur-00691759

**HAL Id: pasteur-00691759**

**<https://riip.hal.science/pasteur-00691759>**

Submitted on 15 May 2012

**HAL** is a multi-disciplinary open access archive for the deposit and dissemination of scientific research documents, whether they are published or not. The documents may come from teaching and research institutions in France or abroad, or from public or private research centers.

L'archive ouverte pluridisciplinaire **HAL**, est destinée au dépôt et à la diffusion de documents scientifiques de niveau recherche, publiés ou non, émanant des établissements d'enseignement et de recherche français ou étrangers, des laboratoires publics ou privés.

## Spoligotyping of clinical *Mycobacterium tuberculosis* isolates from the state of Minas Gerais, Brazil

Silvana Spíndola de Miranda<sup>+</sup>, Wânia da Silva Carvalho, Philip Noel Suffys, Afrânio Lineu Kritski, Martha Oliveira, Noemi Zarate, Thierry Zozio, Nalin Rastogi, Brigitte Gicquel

Departamento de Clínica Médica/Pneumologia, Faculdade de Medicina, Universidade Federal de Minas Gerais, Av. Alfredo Balena 190, 301030-100 Belo Horizonte, MG, Brasil

*We performed spoligotyping on 114 strains of the Mycobacterium tuberculosis (Mtb) complex that had been isolated from patients in Minas Gerais Health Units during 2004. A total of 82/114 (72%) clinical isolates were clustered and 32/114 (28%) were unique. Seven shared types containing nine strains were newly created. A total of nine patterns corresponded to unreported orphan strains, as evaluated against all of the strains recorded in the SITVIT2 proprietary database in the Institut Pasteur de la Guadeloupe. The major clades were composed of isolates that belong to the following genotypes: Latin-America and Mediterranean (63/114, 55.3%) (the ill-defined T superfamily) (12/114, 10.5%), Haarlem (8/114, 7%), X clade (6/114, 5.3%), S clade (3/114, 2.6%) and the East-African Indian and Manu types, each with 1/114 (0.9%) isolates. A considerable number of strains (n = 20, 17.5%) showed patterns that did not fall within any of the previously described major clades. We conclude the bulk of tuberculosis (TB) (92/114, 80.7%) in our location is recent evolutionary strains that belong to the principal genetic groups 2/3. Further studies on epidemiology of TB are required to understand Mtb biodiversity and TB transmission in this region.*

Key words: *Mycobacterium tuberculosis* - spoligotyping - Brazil - Minas Gerais

Tuberculosis (TB) infects a significant proportion of the world population and constitutes a major public health problem, particularly in developing regions. This disease has remained endemic for many decades due the human immunodeficiency virus (HIV) epidemic, the large number of people trapped in poverty, and the disruption of the TB control program (WHO 2006). In this context, Brazil continues to be one of the 22 countries with the highest TB burden; altogether, these 22 countries account for 90% of all TB cases worldwide. However, as of 2007, a 26% decrease in TB incidence and a 32% decrease in TB mortality were verified for Brazil (SBPT 2009). In 2004, approximately 80,000 TB cases were reported in Brazil with an incidence rate of 37.1/100,000 (WHO 2006), while, in the state of Minas Gerais (MG), 6,000 new cases were reported with an incidence of 45/100,000 (WHO 2006). Of these TB patients, 16.2% were coinfecting with HIV and had a TB-related death rate of 7.3%. MG is one of the most populous states in Brazil and Belo Horizonte is its capital and the fifth largest city by number of residents in Brazil. In Belo Horizonte, the TB incidence was 37.1/100,000 in 2004 and it decreased to 31/100,000 in 2008. Consequently, TB is far from being under control this region and more data are required to implement specific control measures.

In the above context, the application of molecular methods permitting both rapid *Mycobacterium tuberculosis* diagnosis and genotyping (Kamerbeek et al. 1997, Kremer et al. 1999) is useful for understanding the prevailing TB genotypes and their circulation within the population. Spoligotyping is the second most widely used method for *M. tuberculosis* (Mtb) complex genotype after IS6110-based fingerprinting (Prodingler 2007) that in combination with mycobacterial interspersed repetitive units-variable-number of tandem DNA repeats (MIRU-VNTR) has been used to replace typing via restriction fragment length polymorphisms (RFLP) based on the insertion sequence IS6110. The IS6110 method has been considered the "gold standard" for genotyping Mtb since 1993. However, the IS6110 method is an expensive, laborious and lengthy methodology that requires weeks of Mtb culturing and specific software to analyse the RFLP band patterns, all of which make the interpretation and exchange of the data difficult. In addition, the IS6110 method has limited use for genotyping the Mtb isolates that contain only a few copies of IS6110 (Cave et al. 1991). Spoligotyping is based on a polymorphism in the chromosomal direct repeat locus (Kamerbeek et al. 1997) and has been applied to the characterization of the Mtb complex. Further, spoligotyping has gained increased international acceptance as a rapid, first line and discriminatory test (Sola et al. 2001, Filliol et al. 2002, Brudey et al. 2006). The spoligotyping method was also the basis for the creation of the largest genotype database for *M. tuberculosis*, containing a global distribution and phylogenetic analysis for worldwide spoligotypes (Brudey et al. 2006). This database provides information that is useful for comparing the patterns found within different world regions, enhancing our understanding of disease distribution dynamics. Indeed, molecular epidemiological ap-

Financial support: FAPEMIG, CAPES

The SITVIT2 database project was partially financed by the Regional Council of Guadeloupe (CR/08-1612: Biodiversité et Risque Infectieux dans les modèles insulaires).

+ Corresponding author: silvanaspindola@gmail.com

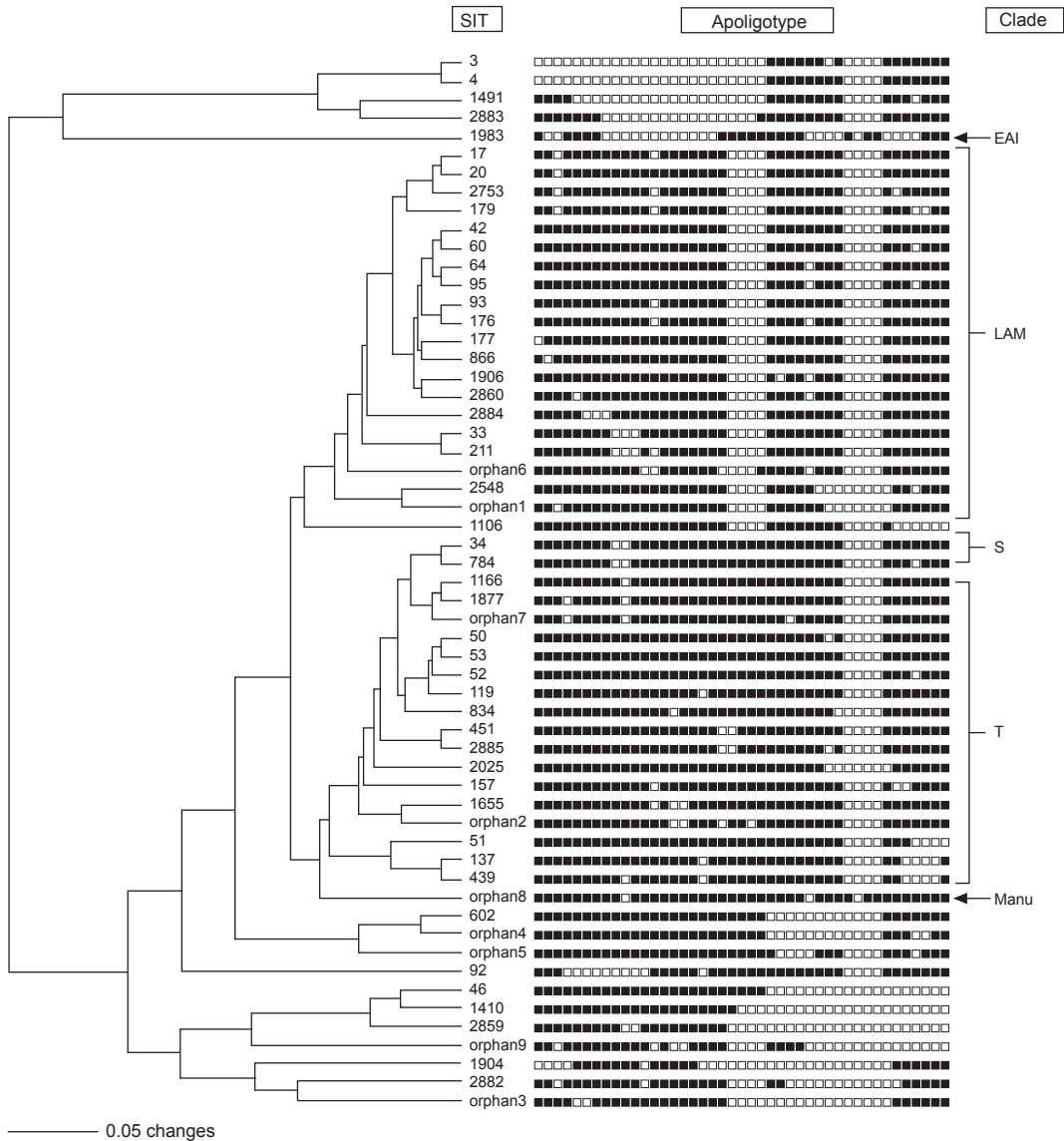
Received 17 August 2010

Accepted 6 April 2011

proaches have shown that certain emerging Mtb strains, which induce more severe forms of TB (such as Beijing), manifest higher failure/relapse than others (Glynn et al. 2002, Lan et al. 2003). These more severe forms may, in turn, accentuate the TB burden even in countries with good TB control programs (Vree et al. 2007). In addition, strains from the Beijing/W and Haarlem families of Mtb are emerging in certain global regions and are associated with drug resistance (EU 2006, Marais et al. 2006). Almost no genotyping information is available for the Mtb strains circulating in the MG area in Brazil (Dalla Costa et al. 2009). Thus, we decided to characterise the Mtb complex clinical isolates from this state by spoligotyping and compare the data with patterns found around the world to pinpoint the predominant Mtb clones.

**PATIENTS, MATERIALS AND METHODS**

*Patients and bacterial isolates* - We studied a total of 114 TB patients that presented with positive Mtb cultures at the Health Units in MG over a one year period (January-December 2004). We included basic demographic data via a standard questionnaire from the files provided at the hospital. The majority of the TB patients included in the study were residents in the cities of Belo Horizonte, Uberlândia and Juiz de Fora (2nd and 3rd largest cities in MG) (MS 2003). Cultures were grown on Lowenstein-Jensen medium, followed by drug-susceptibility tests for rifampicin (40 µg/mL), isoniazid (INH) (0.2 µg/mL), pyrazinamide (100 µg/mL), streptomycin (4 µg/mL), ethambutol (2 µg/mL) and ethionamide (20 µg/mL). These experiments were performed using the proportion method at



Tree of spoligotype patterns *Mycobacterium tuberculosis* isolates (n = 57 profiles) by using the Phylogenetic Analysis Using Parsimony 4.0b software and the unweighted pair group method with arithmetic mean method. EAI: East-African-Indian; LAM: Latin-American-Mediterranean; SIT: Spoligotype International Type as defined in the international database of the Institute Pasteur de la Guadeloupe.









matched a strain from Martinique (French West Indies). Lastly, for each of the preexisting shared types shown in Table III, the results summarise their binary and octal groupings, the total number of strains, their geographical distribution, their genotypic lineage, as well as their percentage in this study compared with the same variable in the SITVIT2 database.

Irrespective of the database comparison, 77 (67.5%) of the clinical samples were clustered (20 clusters containing 2-19 isolates). Another 37 isolates (32.4%) had unique patterns, including nine orphan strains. In addition, 105 out of 114 isolates from this study belonged to 48 shared types. Seven of these shared types contained nine strains and were newly created (Table II), whereas 41 contained 96 isolates. To discern the worldwide distribution of the major shared types encountered in this study (Table III), the strains observed herein were compared with those classified as SIT in the database. SIT42 (LAM9 sub-lineage) was predominant in our setting, in 19/114 (16.7%) of the isolates. The next most prominent types were SIT50 (H lineage) and SIT53 (ill-defined T group of strains), with 6/114, or 5.3%, strains in each case. Next, we observed SIT33 and SIT20 (also of H lineage) in 5/114, or 4.4%, of the isolates in each case. These patients were also inhabitants of areas with a high TB prevalence. The majority of them were male and young adults; an important and productive age range in this country. Only a single case of drug-resistance from an INH-mono-resistant strain was isolated in the city of Belo Horizonte.

The overall repartition of strains, according to major Mtb families (but not SITs *stricto sensu*), showed that major lineages in our setting ranked in the following order (Table III): LAM 63/114 or 55.3%, ill-defined T superfamily (defined by default) 12/114 or 10.5%, H 8/114 or 7%, X clade 6/114 or 5.3%, S clade 3/114 or 2.6% and EAI and Manu clades, 1/114 or 0.9% each. Previous studies analysing Mtb isolates from the state of Rio Grande do Sul in Southern Brazil reported the prevalence of LAM, unknown, H e T, as described in our study; however, the authors analysed a lower number of isolates within a region of low TB prevalence (Noguti et al. 2010, Von Groll et al. 2010). Interestingly, no Beijing and CAS strains were found in the investigation herein, an observation that is corroborated by a recent report from Ritacco et al. 2008. A global perspective on the spoligotype binary patterns, related SITs, and genotypic lineages is illustrated in the Phylogenetic tree shown in Figure. The majority of LAM and T strains in our study originated in patients from Belo Horizonte. Approximately 30% of these patients were either in hospitals or health care units, which could suggest an eventual link (such as nosocomial transmission). However, to support such a link, clonality of these isolates should be confirmed using more discriminatory second-line typing methods, such as either IS6110-RFLP (IS6110-RFLP) or MIRU-VNTRs, which are most appropriate for defining recent transmission (Filliol et al. 2006). In a prospective study developed using Mtb isolates from a reference TB hospital in Brazil, T was the most frequent family; T was also the most frequent in our study at 10.5% (Malaspina et al. 2008, Cafrune et al. 2009).

In conclusion, we observed a high rate of clustering (77/114, 67.5%; 20 clusters containing 2-19 isolates). Further, the bulk of TB strains in our location (92/114, 80.7%) are recent evolutionary strains that belong to the principal genetic groups 2/3. Together, these data show that spoligotyping *per se* is not sufficient in our location for assessing the burden of recently transmitted TB. This methodology is known to overestimate the proportion of clustered cases (Filliol et al. 2006), hence, secondary typing is necessary for such extended studies. Nonetheless, we have been able to provide an initial insight into the genetic relatedness of Mtb isolates within MG. In our study, given the small pool of analysed strains and that the study period was only one year, the rate of clustering (67.5%) was significantly high. Furthermore, the genotype for these strains suggests that the prevailing TB in Brazil might have been imported via European settlers during the conquest of the new world (Brudey et al. 2006). Last, but not least, a considerable number of strains (20/114 or 17.5%) showed patterns that did not belong to any of the previously described major clades, underlining that Brazil is a fertile land for studying Mtb genotypic diversity.

This type of study is important for tracing relationships among the strains and it may also aid in interrupting the chain of transmission between different communities and identifying the principal clades responsible for spreading the disease. Of course, additional studies using more discriminatory secondary line typing methods (IS6110-RFLP or MIRU-VNTRs), more isolates and a longer time period are critical if we are to fully understand the epidemiology of TB in this region.

## REFERENCES

- Brudey K, Driscoll JR, Rigouts L, Prodinger WM, Gori A, Al-Hajj SA, Allix C, Aristimuño L, Arora J, Baumanis V, Binder L, Cafrune P, Cataldi A, Cheong S, Diel R, Ellermeier C, Evans JT, Fauville-Dufaux M, Ferdinand S, Garcia de Viedma D, Garzelli C, Gazzola L, Gomes HM, Gutierrez MC, Hawkey PM, van Helden PD, Kadival GV, Kreiswirth BN, Kremer K, Kubin M, Kulkarni SP, Liens B, Lillebaek T, Ho ML, Martin C, Martin C, Mokrousov I, Narvskaia O, Ngeow YF, Naumann L, Niemann S, Parwati I, Rahim Z, Rasolofon-Razanamparany V, Rasolonavalona T, Rossetti ML, Rüsche-Gerdes S, Sajduda A, Samper S, Shemyakin IG, Singh UB, Somoskovi A, Skuce RA, van Soolingen D, Streicher EM, Suffys PN, Tortoli E, Tracevska T, Vincent V, Victor TC, Warren RM, Yap SF, Zaman K, Portaels F, Rastogi N, Sola C 2006. *Mycobacterium tuberculosis* complex genetic diversity: mining the fourth international spoligotyping database (SpolDB4) for classification, population genetics and epidemiology. *BMC Microbiol* 6: 23.
- Cafrune PI, Possuelo LG, Ribeiro AW, Ribeiro MO, Unis G, Jarzewski CA, Rossetti ML, Zaha A 2009. Prospective study applying spoligotyping directly to DNA from sputum sample of patients of having tuberculosis. *Can J Microbiol* 55: 895-900.
- Canetti G, Rist N, Grosset J 1963. Measurement of sensitivity of the tuberculous bacillus to antibacillary drugs by the method of proportions. Methodology, resistance criteria, results and interpretation. *Rev Tuberc Pneumol (Paris)* 27: 217-272.
- Cave MD, Eisenach KD, McDermott PF, Bates JH, Crawford JT 1991. IS6110: conservation of sequence in the *Mycobacterium tuberculosis* complex and its utilization in DNA fingerprinting. *Mol Cell Probes* 5: 73-80.

- Dalla Costa ER, Ribeiro MO, Silva MS, Arnold LS, Rostirolla DC, Cafrune PI, Espinoza RC, Palaci M, Telles MA, Ritacco V, Suffys PN, Lopes ML, Campelo CL, Miranda SS, Kremer K, da Silva PE, Fonseca Lde S, Ho JL, Kritski AL, Rossetti ML 2009. Correlations of mutations in katG, oxyR-ahpC and inhA genes and *in vitro* susceptibility in *Mycobacterium tuberculosis* clinical strains segregated by spoligotype families from tuberculosis prevalent countries in South America. *BMC Microbiology* 19:9:39.
- EU - European Union. European Concerted Action on New Generation Genetic Markers and Techniques for the Epidemiology and Control of Tuberculosis 2006. Beijing/W genotype *Mycobacterium tuberculosis* and drug resistance. *Emerg Infect Dis* 12: 736-743.
- Filliol I, Ferdinand S, Sola C, Thonnon J, Rastogi N 2002. Spoligotyping and IS6110-RFLP typing of *Mycobacterium tuberculosis* from French Guiana: a comparison of results with international databases underlines interregional transmission from neighboring countries. *Res Microbiol* 153: 81-88.
- Filliol I, Motiwala AS, Cavatore M, Qi W, Hazbon MH, Bobadilla del Valle M, Fyfe J, Garcia-Garcia L, Rastogi N, Sola C, Zozio T, Guerrero MI, Leon CI, Crabtree J, Angiuoli S, Eisenach KD, Durmaz R, Jobba ML, Rendon A, Sifuentes-Osornio J, Ponce de Leon A, Cave MD, Fleischmann R, Whittam TS, Alland D 2006. Global phylogeny of *Mycobacterium tuberculosis* based on single nucleotide polymorphism (SNP) analysis: insights into tuberculosis evolution, phylogenetic accuracy of other DNA fingerprinting systems, and recommendations for a minimal standard SNP set. *J Bacteriol* 18: 759-772.
- Glynn JR, Whiteley J, Bifani PJ, Kremer K, van Soolingen D 2002. Worldwide occurrence of Beijing/W strains of *Mycobacterium tuberculosis*: a systematic review. *Emerg Infect Dis* 8: 843-849.
- Kamerbeek J, Schouls L, Kolk A, van Agterveld M, van Soolingen D, Kuijper S, Bunschoten A, Molhuizen H, Shaw R, Goyal M, van Embden J 1997. Simultaneous detection and strain differentiation of *Mycobacterium tuberculosis* for diagnosis and epidemiology. *J Clin Microbiol* 35: 907-914.
- Kremer K, van Soolingen D, Frothingham R, Haas WH, Hermans PW, Martin C, Palittapongarnpim P, Plikaytis BB, Riley LW, Yakrus MA, Musser JM, van Embden JD 1999. Comparison of methods based on different molecular epidemiological markers for typing of *Mycobacterium tuberculosis* complex strains: interlaboratory study of discriminatory power and reproducibility. *J Clin Microbiol* 37: 2607-2618.
- Lan NT, Lien HT, Tung le B, Borgdorff MW, Kremer K, van Soolingen D 2003. *Mycobacterium tuberculosis* Beijing genotype and risk for treatment failure and relapse, Vietnam. *Emerg Infect Dis* 9: 1633-1635.
- Malaspina AC, Cavalcanti HR, Leite CQ, Machado SM, Viana BH, Silva RM, Hage EF, Figueiredo WM, Marques E, Ferrazoli L, Arbex M, Lessi M, Fonseca LS, Rigouts L, Saad MH 2008. Usefulness of *Mycobacterium tuberculosis* molecular typing in a tuberculosis low-endemic agro-industrial setting of Brazil. *Jpn J Infect Dis* 61: 231-233.
- Marais BJ, Victor TC, Hesselning AC, Barnard M, Jordaan A, Brittle W, Reuter H, Beyers N, van Helden PD, Warren RM, Schaaf HS 2006. Beijing and Haarlem genotypes are overrepresented among children with drug-resistant tuberculosis in the Western Cape province of South Africa. *J Clin Microbiol* 44: 3539-3543.
- MS - Ministério da Saúde 2003. Secretaria de Vigilância em Saúde. Departamento de Vigilância Epidemiológica. Coordenação Geral de Doenças Endêmicas. Área Técnica de Pneumologia Sanitária. Programa Nacional de Controle da Tuberculose [cited 2003 Nov 3]. Available from: [www.opas.org.br/prevencao/site/UploadArq/ProgramaTB.pdf](http://www.opas.org.br/prevencao/site/UploadArq/ProgramaTB.pdf).
- MS - Ministério da Saúde 2007. Sistema de Vigilância em Saúde. Centro de Referência Professor Hélio Fraga. Projeto MSH. Informe Técnico. Sistema de vigilância epidemiológica multirresistente Boletim 1, 1994-2006. *Rev Bras Pneumol Sanit* 15: 39-46.
- Noguti EN, Leite CQF, Malaspina AC, Santos ACB, Hirata RDC, Hirata MH, Mamizuka EM, Cardoso RF 2010. Genotyping of *Mycobacterium tuberculosis* isolates from a low-endemic setting in northwestern state of Paraná in Southern Brazil. *Mem Inst Oswaldo Cruz* 105: 779-785.
- Prodingler WM 2007. Molecular epidemiology of tuberculosis: toy or tool? A review of the literature and examples from Central Europe. *Wien Klin Wochenschr* 119: 80-89.
- Ritacco V, López B, Cafrune PI, Ferrazoli L, Suffys PN, Candia N, Vásquez L, Realpe T, Fernández J, Lima KV, Zurita J, Robledo J, Rossetti ML, Kritski AL, Telles MA, Palomino JC, Heersma H, van Soolingen D, Kremer K, Barrera L 2008. *Mycobacterium tuberculosis* strains of the Beijing genotype are rarely observed in tuberculosis patients in South America. *Mem Inst Oswaldo Cruz* 103: 489-492.
- SBPT - Sociedade Brasileira de Pneumologia e Tisiologia 2009. III Diretrizes para Tuberculose da Sociedade Brasileira de Pneumologia e Tisiologia. *J Bras Pneumol* 35: 1018-1048.
- Scholante Silva AB, Von Groll A, Félix C, Conceição FR, Spies FS, Scaini CJ, Rossetti ML, Borsuk S, Dellagostin OA, Almeida da Silva PE 2009. Clonal diversity of *M. tuberculosis* isolated in a sea port city in Brazil. *Tuberculosis (Edinb)* 89: 443-447.
- Sola C, Filliol I, Gutierrez MC, Mokrousov I, Vincent V, Rastogi N 2001. Spoligotype database of *Mycobacterium tuberculosis*: biogeographic distribution of shared types and epidemiologic and phylogenetic perspectives. *Emerg Infect Dis* 7: 390-396.
- Von Groll A, Martin A, Felix C, Prata PF, Honscha G, Portaels F, Vandame P, da Silva PE, Palomino JC 2010. Fitness study of the RDRio lineage and Latin American-Mediterranean family of *Mycobacterium tuberculosis* in the city of Rio Grande, Brazil. *FEMS Immunol Med Microbiol* 58: 119-127.
- Vree M, Bui DD, Dinh NS, Nguyen VC, Borgdorff MW, Cobelens FG 2007. Tuberculosis trends, Vietnam. *Emerg Infect Dis* 13: 796-797.
- WHO - World Health Organization 2006. *Global tuberculosis control: surveillance, planning, financing*. WHO, Geneva, 77 pp.