



HAL
open science

Rational case management of malaria with a rapid diagnostic test, Paracheck Pf®, in antenatal health care in Bangui, Central African Republic.

Alexandre Manirakiza, Eugène Serdouma, Luc Salva Heredeïbona, Djibrine Djalle, Nestor Madji, Methode Moyen, Georges Soula, Alain Le Faou, Jean Delmont

► **To cite this version:**

Alexandre Manirakiza, Eugène Serdouma, Luc Salva Heredeïbona, Djibrine Djalle, Nestor Madji, et al.. Rational case management of malaria with a rapid diagnostic test, Paracheck Pf®, in antenatal health care in Bangui, Central African Republic.. BMC Public Health, 2012, 12, pp.482. 10.1186/1471-2458-12-482 . pasteur-00734478

HAL Id: pasteur-00734478

<https://riip.hal.science/pasteur-00734478>

Submitted on 24 Sep 2012

HAL is a multi-disciplinary open access archive for the deposit and dissemination of scientific research documents, whether they are published or not. The documents may come from teaching and research institutions in France or abroad, or from public or private research centers.

L'archive ouverte pluridisciplinaire **HAL**, est destinée au dépôt et à la diffusion de documents scientifiques de niveau recherche, publiés ou non, émanant des établissements d'enseignement et de recherche français ou étrangers, des laboratoires publics ou privés.

Rational case management of malaria with a rapid diagnostic test, Paracheck Pf[®], in antenatal health care in Bangui, Central African Republic

Alexandre Manirakiza^{1,2*}, Eugène Serdouma^{3,4}, Luc Salva Heredeibona⁵, Djibrine Djalle¹, Nestor Madji⁶, Methode Moyen⁶, Georges Soula², Alain Le Faou⁷ and Jean Delmont²

Abstract

Background: Both treatment and prevention strategies are recommended by the World Health Organization for the control of malaria during pregnancy in tropical areas. The aim of this study was to assess use of a rapid diagnostic test for prompt management of malaria in pregnancy in Bangui, Central African Republic.

Methods: A cohort of 76 pregnant women was screened systematically for malaria with Paracheck_{Pf}[®] at each antenatal visit. The usefulness of the method was analysed by comparing the number of malaria episodes requiring treatment in the cohort with the number of prescriptions received by another group of pregnant women followed-up in routine antenatal care.

Results: In the cohort group, the proportion of positive Paracheck_{Pf}[®] episodes during antenatal clinics visits was 13.8%, while episodes of antimalarial prescriptions in the group which was followed-up routinely by antenatal personnel was estimated at 26.3%. Hence, the relative risk of the cohort for being prescribed an antimalarial drug was 0.53. Therefore, the attributable fraction of presumptive treatment avoided by systematic screening with Paracheck_{Pf}[®] was 47%.

Conclusions: Use of a rapid diagnostic test is useful, affordable and easy for adequate treatment of malaria in pregnant women. More powerful studies of the usefulness of introducing the test into antenatal care are needed in all health centres in the country and in other tropical areas.

Keywords: Rapid diagnostic test, Malaria, Pregnancy

Background

Malaria is a major public health problem, especially during pregnancy. In 2008, malaria affected more than 2 billion people, nearly 40% of the world population. More than 50 million women live in malaria-endemic areas, of whom 20% become pregnant each year, and half of whom develop complications of pregnancy due to malaria [1,2]. Placental inter-villous sequestration of malaria parasites during pregnancy can cause growth retardation by reducing nutrient intake and causing hypoxia [3,4] and thus low birth weight [3-5]. Placental infection with *Plasmodium* is associated

with a 50% risk for low birth weight in areas where malaria is endemic [6]. Clinical malaria increases the risks for abortion, premature delivery and maternal death [7-9].

Sulfadoxine-pyrimethamine (SP) is a promising means of preventing the adverse effects of malaria, as first suggested by studies conducted in East Africa [10]. Hence, the World Health Organization (WHO) has recommended SP as a component of one of three packages to control malaria in pregnant women in Africa [11]: four antenatal visits, during which two doses of intermittent preventive (or presumptive) treatment with SP (IPTsp) spaced by at least 4 weeks are given by directly observed treatment; use of insecticide-treated nets (ITNs) to reduce the number of infective bites; and immediate, adequate treatment of clinical malaria. IPTsp involves administration of curative doses to asymptomatic women

* Correspondence: amanirak@yahoo.fr

¹Institut Pasteur de Bangui, Bangui PO Box 923 Central African Republic

²Centre de Formation et de Recherche en Médecine et Santé Tropicales, Faculté de Médecine Nord, 13015, Marseille, France

Full list of author information is available at the end of the article

(two doses for women with negative HIV status and three doses for those infected with HIV). Because SP can be embryotoxic, it should be administered only after the 16th week (second trimester) of pregnancy [12,13]. The efficacy of IPTsp plus ITNs in reducing the burden of malaria during pregnancy is well proven [14-16] and cost-effective [17-20].

Lack of compliance of health care personnel with the new strategies could hamper implementation of IPTsp in particular [11,21]. Certain aspects of health care strategies determine their acceptability in the field [22]. Thus, the long-standing practice of prescribing antimalarial drugs only on the basis of a clinical presumption of malaria could result in under-administration of IPTsp in antenatal health care services.

Bardaji et al. in Mozambique [23] found that 77.4% of women attending antenatal clinics had clinical signs or symptoms suggesting malaria, and 92.9% of these were prescribed antimalarial drugs without laboratory confirmation of *Plasmodium* infection. [24]. This practice is likely to be common in tropical areas of Africa. Our recent study in the Central African Republic showed that laboratory analysis is rare before antimalarial drugs are prescribed for pregnant women [25]. Although widespread presumptive prescription and use of antimalarial agents could indisputably lead to prompt clearance of existing peripheral and placental *Plasmodium* infection and decrease the risk for low birth weight [26], unnecessarily wide use of antimalarial drugs is avoidable if preventive methods (IPTsp and LLINs) are used. The increasing resistance of *P. falciparum* to SP [27,28] jeopardizes the ability of this drug combination to eliminate the parasite completely, especially when it is sequestered in the placenta, hence, the importance of systematic screening for malaria during pregnancy [29], and use of rapid diagnostic tests (RDTs) is a possible strategy [30,31].

In public health care practice in the Central African Republic, malaria is diagnosed by analysing thick and thin blood smears; RDTs have not yet been introduced. The aim of this study was to assess the efficacy of systematic screening for malaria with RDTs during antenatal health care in reducing over-prescription of antimalarial drugs to pregnant women. The number of episodes of malaria confirmed by a RDT in a prospective cohort of pregnant women receiving routine antenatal care was compared with the number of antimalarial prescriptions in a control group of pregnant women at the same clinics.

Method

Study setting and design

This study was conducted in the two main public maternity clinics of Bangui, Central African Republic, the Castors Health Centre and the Amitié Hospital, between October 2009 and October 2011. In Bangui, the climate is

tropical, with rainfall peaks from April to November and temperatures ranging from 19 °C to 33 °C. The main malaria parasite is *Plasmodium falciparum*, and malaria transmission is endemic, with peaks during the rainy season, although no data are available on the intensity of malaria transmission. Malaria accounts for more than 40% of morbidity in the country (CAR Ministry of Health, unpublished data).

The objective of the National Malaria Programme is to reduce morbidity and mortality related to malaria in the general population, especially among children under 5 years and pregnant women, to reach a coverage rate of at least 80% with each WHO package [11]. This study consisted of strict application of the three components of the WHO package to a cohort of women during their pregnancy. Longitudinal data on *Plasmodium* infection were compared with data collected from a matched control group followed-up routinely by the antenatal services staff.

Ethical approval

Because there is no ethical committee in the country, this project was reviewed and approved by an *ad hoc* scientific committee of the University of Bangui in charge of validating scientific study protocols. The scientific committee of the 'Ecole Doctorale des Sciences de la Vie et de la Santé de l'Université de la Méditerranée, Aix-Marseille' also approved the study protocol and its amendments.

Sample size

We used 25% as a proxy for the number of malaria episodes during pregnancy [29], and 50% as a proxy for the number of women usually prescribed antimalarial treatment [25]. The estimated sample size with 80% power at the 5% significance level was therefore 60 in each group.

Procedures

Antenatal services staff were informed about the study, and we collected data in the context of usual non-malaria antenatal health care, including enrolment. During each working day, a maximum of two pregnant women from among those presenting at the clinics were randomly included in the cohort. The women were of all parities with a gestational age less than 28 weeks, from whom written informed consent was obtained. Women who were temporary residents of Bangui, had had a prior dose of IPTsp, gave a history of sensitivity to SP, quinine or an artemisinin derivative, had an illness requiring hospital admission or declined to join the study were excluded.

At enrolment, all women were given an ITN (supplied by the National Malaria Control Programme), and a finger-prick blood sample was obtained for preparation of slides and for diagnosis of *Plasmodium* infection with the Paracheck_{Pf}[®] RDT (Orchid Biomedical Systems, India).

We recorded sociodemographic data (age, address, occupational status and educational level) and also gestational age, gravidity, parity and HIV serological status.

During follow-up, an IPTsp dose (1500 mg sulfadoxine and 75 mg pyrimethamine) was administered after 16 weeks of gestation and a second dose at least 1 month later. Smear slide analysis and the RDT were performed systematically during each scheduled antenatal visit or at any unscheduled visit for women who reported malaria-like symptoms. Women with any symptom or clinical sign suggesting malaria [23] and with a positive result in the RDT and/or on a blood smear were given quinine (24 mg/kg of body mass) for 7 days. Women who reported sensitivity to quinine were given artemether 300 mg (20 mg) and lumefantrine (120 mg) if the gestational age exceeded 16 weeks. Women with a positive result in the RDT or on a thick smear but with no malaria symptoms were given one IPTsp dose; a smear was made 8 days later to verify any persistent parasitaemia or at any time earlier if a woman presented with symptomatic malaria, when quinine or artemether-lumefantrine was administered. All women were prescribed daily ferrous (400 mg) and folic (5 mg) supplements. All the antimalarial drugs were supplied by the 'Unité de Cession du Médicament', a public wholesaler that imports generic drugs.

Each woman in our cohort was matched on gravidity (1 or ≥ 2) and age (± 5 years) to another women delivering at the same maternity clinic within 1 week and from whom written informed consent was also obtained. Other criteria for enrolment in the control group were: known last date of menstruation (or gestational age at delivery), at least one antenatal visit, known HIV serological status and sleeping under an ITN. The following data were collected: socio-demographic information (age, address, occupational status and educational level), gestational age, gravidity, parity, HIV serological status, number of antenatal visits and number of malaria treatment episodes (with or without laboratory confirmation) during pregnancy.

At each antenatal visit, the RDT and blood smears were performed for each woman in the cohort. At delivery, these tests were performed on both maternal peripheral blood and placental blood. The placental blood was collected from the maternal paracentric side of the placenta after incision, and thick blood films were prepared from a droplet collected by aspiration through a 21-gauge needle attached to a 5-ml syringe [32,33]. Newborns were weighed on a mechanical infant body scale.

Laboratory analysis

The maternal and placental thick smears were air-dried, stained with 4% Giemsa and analysed under a light microscope ($\times 100$ oil immersion) to detect asexual forms of *P. falciparum*. The parasite density in maternal peripheral blood was determined from the number of parasites per

200 leukocytes on the assumption of an average leukocyte count of 8000/ μ l of blood. For maternal blood films, a result was considered negative if no parasites were detected per 200 leukocytes; for placental blood films, a result was considered negative if no parasites were detected per 100 microscope fields. All the slides were read independently by two microscopists. In case of a discrepancy, a third reading was done.

The RDT was performed according to the manufacturer's guidelines and stored at room temperature (26–32 °C). Briefly, blood samples from the finger-prick and placenta were blotted into the sample well of the test device with the loop provided in the kit. Then, six drops (almost 300 μ l) of clearing buffer were dispersed into the indicated well. The result was read after exactly 15 min. It was considered negative if a pink band appeared only in the control window and positive if, in addition to the control band, a distinct pink band also appeared in the test window. If no band appeared, the test was considered invalid and was repeated with a new device.

Data analysis

Data were double-entered into EpiInfo software version 3.5.3, and the database was checked and data entry errors corrected with the EpiInfo software 'data compare' utility for finding differences between two tables. Statistical analysis was conducted with Stata 11.2 and MedCalc v11.6.1.

Categorical variables were compared by either the χ^2 test or Fisher exact test, and quantitative variables were compared by the Student *t* test (Mann–Whitney *U* test). The level of significance (*P*) was fixed at 0.05 for all statistical tests.

We used the attributable fraction calculation procedure [34] to estimate avoidance of antimalarial drug prescription for pregnant women systematically screened for malaria. Thus, the risk for exposure to antimalarial drugs was calculated for each group, and then we calculated the relative risk (RR) of the women in the cohort for being treated in relation to the control group, and used the 1–RR formula to calculate the preventive fraction.

Results

Participant flow

During the study period, 874 pregnant women presented at their first antenatal visit. At baseline, 412 women fulfilled the inclusion criteria. A cohort sample of 83 pregnant women was randomly recruited from among women who fulfilled the inclusion criteria. The remaining 329 women were followed-up routinely by the antenatal services staff, providing an eligible population from which the control group was recruited at delivery. In the cohort group, 76 women (91.6%) were followed-up until delivery. At this end-point, this cohort group was matched to the control group (Figure 1). Overall, the total number of

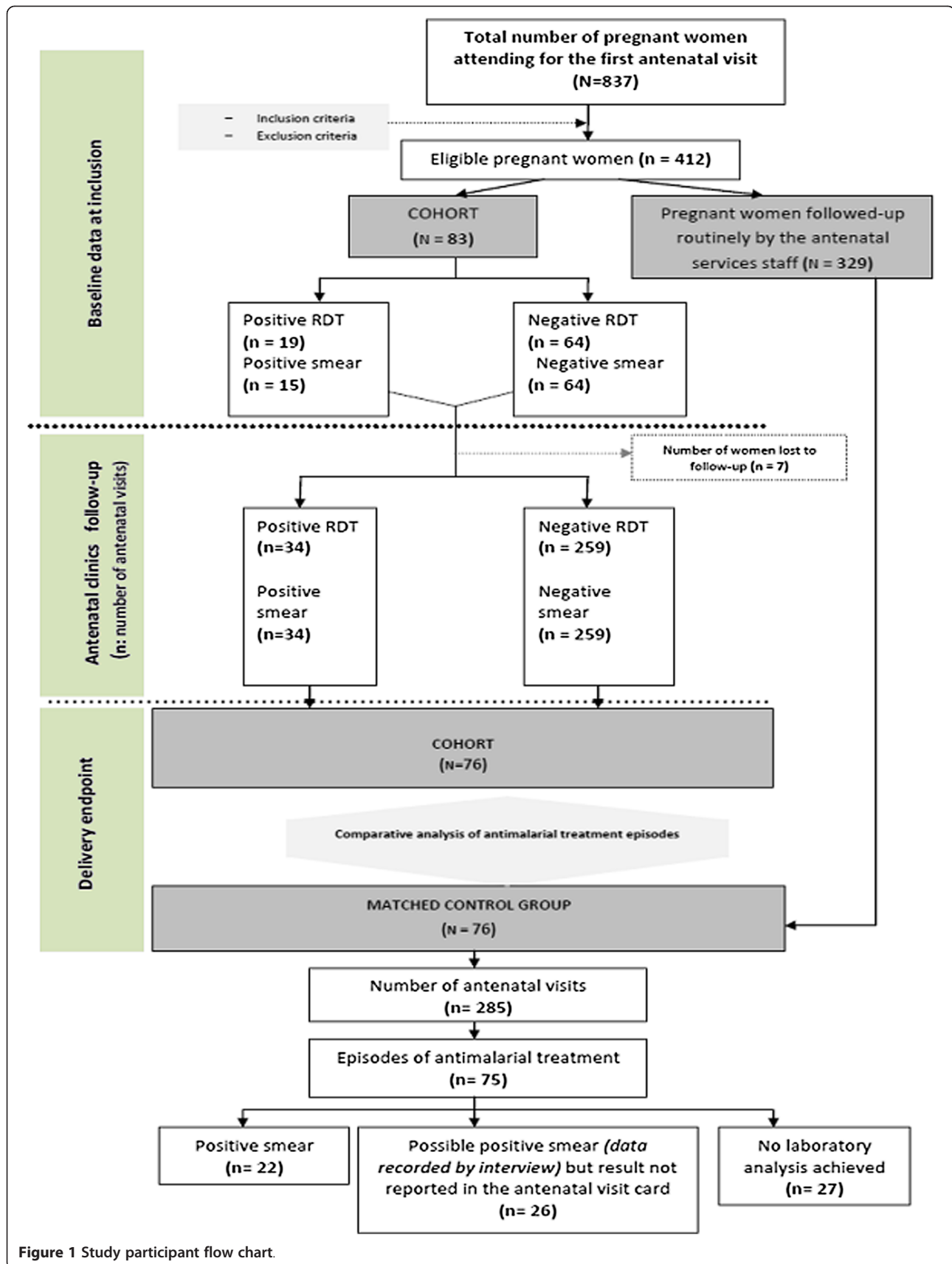


Figure 1 Study participant flow chart.

antenatal visits was 369 in the cohort group and 285 in the control group.

Characteristics of the study population

The average age of the women was 26 years (SD = 5 years), and the mean gravidity was 2 (range, 1–6), with no statistically significant differences between the groups. The serological prevalence of HIV infection was 7.6% (Table 1). The distribution of visits by length of gestation (in months) is shown in Figure 2. The IPTsp coverage rate with at least two doses was 93.4% in the cohort and 65.8% (50/76) in the control group. A statistically significant difference in the mean weight of birth of the infant was found between the two groups ($P = 0.007$).

Results of diagnostic tests for malaria

In the cohort, 40 pregnant women (52.6%) presented clinical signs at baseline suggesting malaria. Of these women, 42.5% (17/40) had a positive RDT for malaria; none of the asymptomatic pregnant women had a positive result for malaria. During follow-up, 293 antenatal visits were made by the cohort group, and symptoms suggesting malaria were noted in 35.5% (104/293); however, positive RDT were found for only 29.8% (31/104). Overall, positive results for *P. falciparum* infection were found by the RDT at 13.8% of antenatal visits (51/369) and by thick blood smear analysis at 11.6% (43/369) of visits. Concordance was found for positive results in the RDT and in thick blood smears but not for negative results, as eight results were negative in the thick blood smear but positive with the RDT (15.7% discordance). Figure 1 shows a flow chart of these diagnostic tests.

Women positive results in the RDT were treated with either artemether-lumefantrine (45.1%, 23/51) or quinine

(54.9%, 28/51). During follow-up, three asymptomatic malaria episodes were seen, with positive results in both the RDT and thick blood smear analysis. Each of these women received one dose of SP, and thick blood smears analysed 8 days later and at the following scheduled visit was negative.

In the control group, 75 prescriptions for a possible malaria episode were delivered by the antenatal services staff. Positive thick blood smears were documented on 35.0% of antenatal visit cards. These cards showed that 29.3% (22/75) prescriptions of antimalarial drugs were achieved after a documented positive laboratory result for malaria before treatment, while 36.0% (27/75) antimalarial drugs were achieved without laboratory analysis. For remaining prescriptions, laboratory analysis was not recorded in antenatal visit cards. However, interviewed women were reported that smear analysis were positive.

At delivery, the results of the two tests were concordant for both the maternal peripheral blood smear and the placental blood samples in the two groups. Four placental blood samples from the cohort and only two from the control group were positive in the RDT. In the control group, five placental blood samples and two blood slides were positive with the RDT (Figure 3).

During this study, none of the tests was invalid.

Effect of RDT results on malaria treatment

Only 13.8% (51/369) of the pregnant women in our cohort needed antimalarial treatment after a positive RDT, while 26.3% (75/285) of the control group received such prescriptions. Antimalarial treatment was significantly more frequent in the control group than in the cohort ($P = 0.0001$). The relative risk of the cohort for being prescribed an antimalarial drug was 0.53; therefore, 47% of prescriptions were

Table 1 Characteristics of the study population

Characteristic	Cohort (N = 76)	Control group (N = 76)	P value
Mean age (years) (SD)	25.9 (5.4)	26.7 (3.8)	NS
Number of pregnancies			
0–1	32.4 (23)	29.6 (21)	NS
2	25.4 (18)	26.8 (19)	NS
≥ 3	49.3 (35)	50.7 (36)	NS
Educational level			
None	18.3(13)	14.1 (10)	NS
Primary school	33.8 (24)	38.0 (27)	NS
Secondary school	54.9 (39)	54.9 (39)	NS
HIV serological status	7.9 (6)	5.3 (4)	NS
Birth weight, mean g (SD)	3161 (351)	3297 (261)	0.007
Proportion of infants weighing < 2500 g	5.3	0.0	-

SD, standard deviation

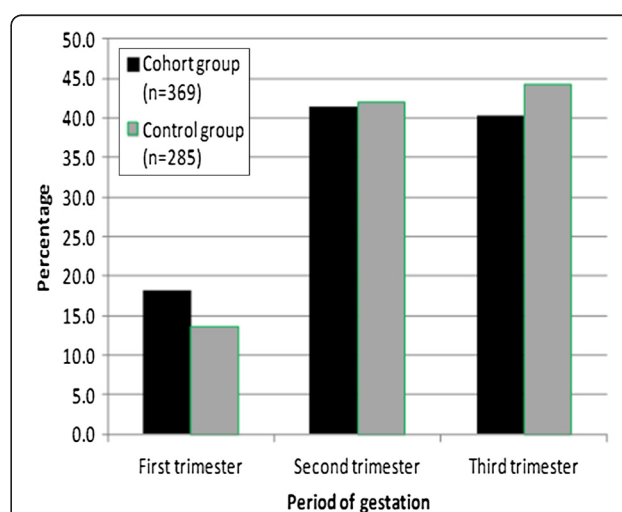
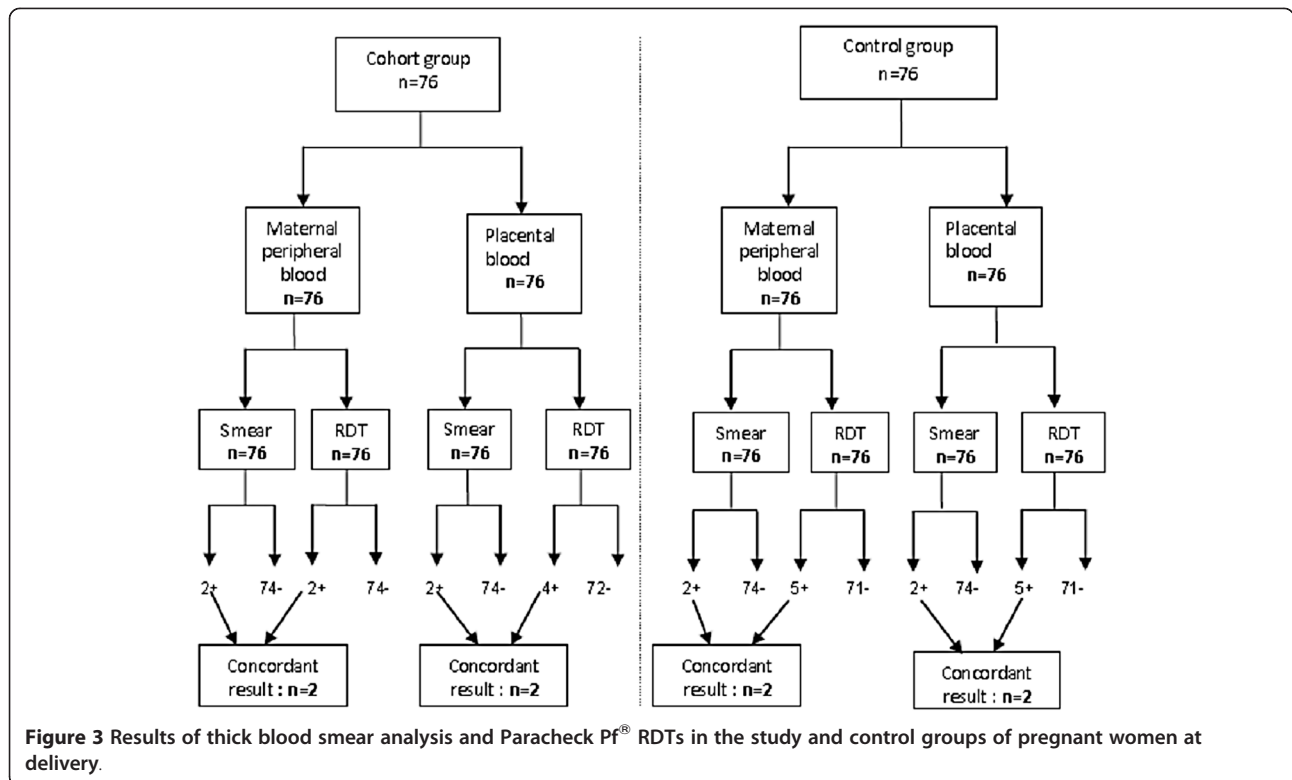


Figure 2 Numbers of antenatal visits according to gestational age in the cohort and control groups of pregnant women.



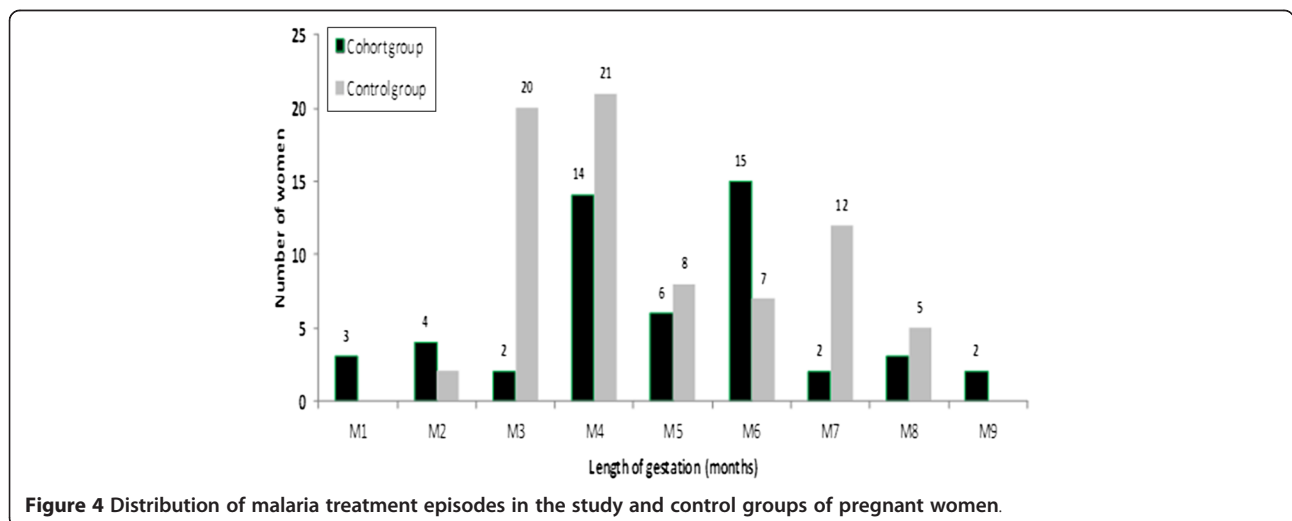
avoided with use of the RDT. The distribution of malaria treatment according to gestational age was, however, similar in the two groups (*U*-test *P* values > 0.05) (Figure 4).

Discussion

Our findings highlight the value of using an RDT in managing malaria during pregnancy. The usefulness of RDTs in the diagnosis of malaria in patients presenting with symptoms or clinical signs is well established [35,36], although there has been concern that the number of malaria

cases might be overestimated [37,38]. The performance of the ParacheckPf[®] RDT in the diagnosis of malaria in pregnancy was recently appraised [39], and the use of RDTs in reducing the cost of treatment of malaria as compared with presumptive treatment has been demonstrated in children in Cameroon [40]. However, heat stability, vital to maintaining the sensitivity of this test in the field, is a concern [41,42], although there were no invalid tests.

The ParacheckPf[®] RDT was more sensitive than microscopic analysis of thick blood smears, as found in other



studies [38-40]. The priority is to determine whether an RDT can be positive when microscopy is negative [43]. The location of parasites in the deep blood circulation, particularly in the placenta, with release of antigens into the systemic circulation would explain a negative result in thick blood slides when an RDT is positive.

We observed a significant reduction in the number of antimalarial drug prescriptions in pregnant women when the ParacheckPf® RDT was used at each antenatal visit. This strategy therefore reduces unnecessary expenditure on drugs and also reduces unwarranted exposure of pregnant women to those drugs. Moreover, appropriate early treatment of malaria during pregnancy helps to eliminate parasites from both maternal blood and the placenta.

It has been estimated that malaria parasites are present in the placenta in only 20% of cases [44,45]. In our study, this proportion was 15.7%. As parasites sequestered in the placenta release antigens into the peripheral blood, they can be detected by RDT at any time of pregnancy.

One potential limitation of our study is the small sample, which precluded further analysis of birth weights; however, a study of three cohorts of a total of 3333 women conducted in Ghana [29] led to the same conclusion regarding the usefulness of screening with an RDT and treatment of positive cases. A second potential limitation was possible bias due to the "Hawthorne effect", whereby people improve an aspect of their behaviour because they know they are being observed [46]. As our study was conducted in the office used by the staff of the antenatal clinics, they might have changed their attitude to improve the diagnosis of malaria by increasing their requests for laboratory analysis of thick blood smears.

Conclusion

This study shows that routine screening of pregnant women for malaria can avoid unnecessary prescription of drugs. As any use of medical products during pregnancy should be avoided, the proportion of avoidable antimalarial drug exposure that we observed in this study could be important if it were extrapolated to other primary health care services.

Ensuring clearance of malaria parasites is essential for the control of malaria during pregnancy. Thus, the ease of use and relatively high sensitivity of the ParacheckPf® RDT in comparison with microscopy could allow prompt, radical treatment of malaria. Its integration into primary health care services should, however, be accompanied by regular supervision of the activities of the personnel involved. More studies are needed in other areas of the Central African Republic and other countries to assess the introduction of RDTs in malaria control in pregnant women.

Competing interests

The authors declare that they have no competing interests.

Authors' contributions

AM, GS and JD conceived the study. AM organized and managed the study day-to-day and contributed to writing the manuscript. DD managed the RDT kits. ES, LSH and NM participated in field data collection. All authors contributed to the preparation of the manuscript and have approved the final version.

Acknowledgements

The authors are grateful to all the women who participated in this study. They also thank the staffs of the maternity clinics of Castors health centre and "Amitié" hospital in Bangui, where the study was conducted, which kindly collaborated in data collection. Many thanks also to Professor Elisabeth Heseltine and Dr Mirdad Kazanjji for critical reading of the manuscript.

This study received financial support from the 'Service de la Coopération et d'Action Culturelle' of the 'Ministère français des Affaires étrangères' and from the Institut Pasteur de Bangui.

Author details

¹Institut Pasteur de Bangui, Bangui PO Box 923 Central African Republic. ²Centre de Formation et de Recherche en Médecine et Santé Tropicales, Faculté de Médecine Nord, 13015, Marseille, France. ³Reproductive Health, Ministry of Public Health, Population and AIDS Control, PO Box 883, Bangui, Central African Republic. ⁴Faculty of Health Sciences, University of Bangui, PO Box 1383, Bangui, Central African Republic. ⁵Ministry of Public Health, Population and AIDS Control, Castors Health Centre, Bangui, Central African Republic. ⁶Malaria Programme Division, Ministry of Public Health, Population and AIDS Control, PO Box 883, Bangui, Central African Republic. ⁷Hôpital de Brabois Adultes, CHU de Nancy, 54511, Vandoeuvre-lès-Nancy Cedex, France.

Received: 28 January 2012 Accepted: 26 June 2012

Published: 26 June 2012

References

1. WHO: *World malaria Report*; 2008. Accessed at http://whqlibdoc.who.int/publications/2008/9789241563697_eng.pdf, on June 10, 2011.
2. Dellicour S, Tatem AJ, Guerra CA, Snow RW, ter Kuile FO: **Quantifying the number of pregnancies at risk of malaria in 2007: a demographic study.** *PLoS Med* 2010, **7**(1):e1000221.
3. Boeuf P, Tan A, Romagosa C, Radford J, Mwapasa V, Molyneux ME, Meshnick SR, Hunt NH, Rogerson SJ: **Placental hypoxia during placental malaria.** *J Infect Dis* 2008, **197**(5):757-765.
4. Uddenfeldt Wort U, Warsame M, Brabin BJ: **Potential use of birthweight indicators in rural Tanzania for monitoring malaria control in pregnancy.** *Publ Health* 2008, **122**(9):923-932.
5. Menendez C: **Malaria during pregnancy: a priority area of malaria research and control.** *Parasitol Today* 1995, **11**(5):178-183.
6. Brabin B, Maxwell S, Chimsuku L, Verhoeff F, van der Kaay HJ, Broadhead R, Kazembe P, Thomas A: **A study of the consequences of malarial infection in pregnant women and their infants.** *Parassitologia* 1993, **35**(Suppl):9-11.
7. Steketee RW, Nahlen BL, Parise ME, Menendez C: **The burden of malaria in pregnancy in malaria-endemic areas.** *Am J Trop Med Hyg* 2001, **64**(1-2 Suppl):28-35.
8. Sedgh G, Henshaw S, Singh S, Ahman E, Shah IH: **Induced abortion: estimated rates and trends worldwide.** *Lancet* 2007, **370**(9595):1338-1345.
9. Jelliffe EF: **Low birth-weight and malarial infection of the placenta.** *Bull World Health Organ* 1968, **38**:69-78.
10. Schultz LJ, Steketee RW, Macheso A, Kazembe P, Chitsulo L, Wirima JJ: **The efficacy of antimalarial regimens containing sulfadoxine-pyrimethamine and/or chloroquine in preventing peripheral and placental Plasmodium falciparum infection among pregnant women in Malawi.** *Am J Trop Med Hyg* 1994, **51**(5):515-522.
11. WHO: *A Strategic Framework for Malaria Prevention and Control During Pregnancy in the African Region*; 2004. Accessed on July 20th, 2010; at http://whqlibdoc.who.int/afro/2004/AFR_MAL_0401.pdf.
12. Phillips-Howard PA, Wood D: **The safety of antimalarial drugs in pregnancy.** *Drug Saf* 1996, **14**(3):131-145.
13. Nosten F, McGready R, d'Alessandro U, Bonell A, Verhoeff F, Menendez C, Mutabingwa T, Brabin B: **Antimalarial drugs in pregnancy: a review.** *Curr Drug Saf* 2006, **1**(1):1-15.

14. Gamble C, Ekwaru JP, ter Kuile FO: **Insecticide-treated nets for preventing malaria in pregnancy.** *Cochrane Database Syst Rev* 2006, **2**:CD003755.
15. Briand V, Denoel L, Massougbedji A, Cot M: **Efficacy of intermittent preventive treatment versus chloroquine prophylaxis to prevent malaria during pregnancy in Benin.** *J Infect Dis* 2008, **198**(4):594–601.
16. van Eijk AM, Ayisi JG, ter Kuile FO, Otiemo JA, Misore AO, Odondi JO, Rosen DH, Kager PA, Steketee RW, Nahlen BL: **Effectiveness of intermittent preventive treatment with sulphadoxine-pyrimethamine for control of malaria in pregnancy in western Kenya: a hospital-based study.** *Trop Med Int Health* 2004, **9**(3):351–360.
17. Mbonye AK, Hansen KS, Bygbjerg IC, Magnussen P: **Intermittent preventive treatment of malaria in pregnancy: the incremental cost-effectiveness of a new delivery system in Uganda.** *Trans R Soc Trop Med Hyg* 2008, **102**(7):685–693.
18. Schultz LJ, Steketee RW, Chitsulo L, Wirima JJ: **Antimalarials during pregnancy: a cost-effectiveness analysis.** *Bull World Health Organ* 1995, **73**(2):207–214.
19. Sicuri E, Bardaji A, Nhampossa T, Maixenchs M, Nhacolo A, Nhalungo D, Alonso PL, Menéndez C: **Cost-effectiveness of intermittent preventive treatment of malaria in pregnancy in southern Mozambique.** *PLoS One* 2010, **5**(10):e13407.
20. Wolfe EB, Parise ME, Haddix AC, Nahlen BL, Ayisi JG, Misore A, Steketee RW: **Cost-effectiveness of sulfadoxine-pyrimethamine for the prevention of malaria-associated low birth weight.** *AmJTrop Med Hyg* 2001, **64**(3–4):178–186.
21. Guyatt HL, Noor AM, Ochola SA, Snow RW: **Use of intermittent presumptive treatment and insecticide treated bed nets by pregnant women in four Kenyan districts.** *Trop Med Int Health* 2004, **9**(2):255–261.
22. D'Alessandro U: **A rational approach to malaria control in pregnancy in sub-Saharan Africa: the need for a link between scientific research and public-health interventions.** *Ann Trop Med Parasitol* 1999, **93**(Suppl 1):S75–S77.
23. Bardaji A, Sigauque B, Bruni L, Romagosa C, Sanz S, Mabunda S, Mandomando I, Aponte J, Sevene E, Alonso PL, Menéndez C: **Clinical malaria in African pregnant women.** *Malar J* 2008, **7**:27.
24. Manirakiza A, Njuimo SP, Le Faou A, Malvy D, Millet P: **Availability of antimalarial drugs and evaluation of the attitude and practices for the treatment of uncomplicated malaria in bangui, central african republic.** *J Trop Med* 2010, **2010**:510834.
25. Manirakiza A, Soula G, Laganier R, Klement E, Djall D, Methode M, Madji N, Heredeibona LS, Le Faou A, Delmont J: **Pattern of the Antimalarials Prescription during Pregnancy in Bangui, Central African Republic.** *Malaria Res Treat* 2011, **11**:1.
26. Manirakiza A, Serdouma E, Djalle D, Soula G, Laganier R, Madji N, Moyen M, Le Faou A, Delmont J: **Relatively low prevalence of peripheral and placental Plasmodium infection at delivery in bangui, central african republic.** *J Trop Med* 2011, **2011**:434816.
27. Menard D, Djalle D, Manirakiza A, Yapou F, Siadou V, Sana S, Matsika-Claquin MD, Nestor M, Talarmin A: **Drug-resistant malaria in Bangui, Central African Republic: an in vitro assessment.** *AmJTrop Med Hyg* 2005, **73**(2):239–243.
28. Menard D, Djalle D, Yapou F, Manirakiza A, Talarmin A: **Frequency distribution of antimalarial drug-resistant alleles among isolates of Plasmodium falciparum in Bangui, Central African Republic.** *AmJTrop Med Hyg* 2006, **74**(2):205–210.
29. Tagbor H, Bruce J, Agbo M, Greenwood B, Chandramohan D: **Intermittent screening and treatment versus intermittent preventive treatment of malaria in pregnancy: a randomised controlled non-inferiority trial.** *PLoS One* 2010, **5**(12):e14425.
30. Uneke CJ: **Diagnosis of Plasmodium falciparum malaria in pregnancy in sub-Saharan Africa: the challenges and public health implications.** *Parasitol Res* 2008, **102**(3):333–342.
31. Singer LM, Newman RD, Diarra A, Moran AC, Huber CS, Stennies G, Sirima SB, Konate A, Yameogo M, Sawadogo R, et al: **Evaluation of a malaria rapid diagnostic test for assessing the burden of malaria during pregnancy.** *AmJTrop Med Hyg* 2004, **70**(5):481–485.
32. Rogerson SJ, Mkundika P, Kanjala MK: **Diagnosis of Plasmodium falciparum malaria at delivery: comparison of blood film preparation methods and of blood films with histology.** *J Clin Microbiol* 2003, **41**(4):1370–1374.
33. Sowunmi A, Abohwere AE, Akindele JJA, Ilesanmi AO, Falade CO, Oduola AMJ: **Comparison of the incision and aspiration methods for the diagnosis of placental malaria infection.** *J Obstet Gynaecol* 1996, **16**(5):316–320.
34. Smith T, Schellenberg JA, Hayes R: **Attributable fraction estimates and case definitions for malaria in endemic areas.** *Stat Med* 1994, **13**(22):2345–2358.
35. Kamugisha ML, Msangeni H, Beale E, Malecela EK, Akida J, Ishengoma DR, Lemnge MM: **Paracheck Pf compared with microscopy for diagnosis of Plasmodium falciparum malaria among children in Tanga City, north-eastern Tanzania.** *Tanzania J Health Res* 2008, **10**(1):14–19.
36. Mboera LE, Fanello CI, Malima RC, Talbert A, Fogliati P, Bobbio F, Molteni F: **Comparison of the Paracheck-Pf test with microscopy, for the confirmation of Plasmodium falciparum malaria in Tanzania.** *Ann Trop Med Parasitol* 2006, **100**(2):115–122.
37. Bell DR, Wilson DW, Martin LB: **False-positive results of a Plasmodium falciparum histidine-rich protein 2-detecting malaria rapid diagnostic test due to high sensitivity in a community with fluctuating low parasite density.** *Am J Trop Med Hyg* 2005, **73**(1):199–203.
38. Swarthout TD, Counihan H, Senga RK, van den Broek I: **Paracheck-Pf accuracy and recently treated Plasmodium falciparum infections: is there a risk of over-diagnosis?** *Malar J* 2007, **6**:58.
39. Dhorda M, Piola P, Nyehangane D, Tumwebaze B, Nalusaji A, Nabasumba C, Turyakira E, McGready R, Ashley E, Guerin PJ, et al: **Performance of a Histidine-Rich Protein 2 Rapid Diagnostic Test, Paracheck Pf(R), for Detection of Malaria Infections in Ugandan Pregnant Women.** *Am J Trop Med Hyg* 2012, **86**(1):93–95.
40. Sayang C, Soula G, Tahar R, Basco LK, Gazin P, Moyou-Somo R, Delmont J: **Use of a histidine-rich protein 2-based rapid diagnostic test for malaria by health personnel during routine consultation of febrile outpatients in a peripheral health facility in Yaounde, Cameroon.** *AmJTrop Med Hyg* 2009, **81**(2):343–347.
41. World Health Organization: **Malaria Rapid Diagnostic Test Performance: Results of WHO Product Testing of Malaria RDTs: Round 1.** Geneva: World Health Organization; 2008. Accessed on April 20th, 2010 at <http://apps.who.int/tdr/news-events/news/pdf/executive-summary-malaria-RDTs.pdf>.
42. World Health Organization: **Malaria Rapid Diagnostic Test Performance: Results of WHO Product Testing of Malaria RDTs: Round 2 (2009).** Geneva: World Health Organization; 2009. Accessed on December 8th, 2011 at http://apps.who.int/tdr/publications/tdr-research-publications/rdt_round2/pdf/rdt_round2.pdf.
43. Bell D, Peeling RW: **Evaluation of rapid diagnostic tests: malaria.** *Nat Rev Microbiol* 2006, **4**(9 Suppl):S34–S38.
44. Brabin B: **An analysis of malaria in pregnancy in Africa.** *Bull World Health Org* 1983, **61**(6):1005–1016.
45. Leke RF, Djokam RR, Mbu R, Leke RJ, Fogako J, Megnekou R, Metenou S, Sama G, Zhou Y, Cadigan T, et al: **Detection of the Plasmodium falciparum antigen histidine-rich protein 2 in blood of pregnant women: implications for diagnosing placental malaria.** *J Clin Microbiol* 1999, **37**(9):2992–2996.
46. Leonard K, Masatu MC: **Outpatient process quality evaluation and the Hawthorne Effect.** *Soc Sci Med* 2006, **63**(9):2330–2340.

doi:10.1186/1471-2458-12-482

Cite this article as: Manirakiza et al.: Rational case management of malaria with a rapid diagnostic test, Paracheck Pf[®], in antenatal health care in Bangui, Central African Republic. *BMC Public Health* 2012 **12**:482.

Submit your next manuscript to BioMed Central and take full advantage of:

- Convenient online submission
- Thorough peer review
- No space constraints or color figure charges
- Immediate publication on acceptance
- Inclusion in PubMed, CAS, Scopus and Google Scholar
- Research which is freely available for redistribution

Submit your manuscript at
www.biomedcentral.com/submit

