



**HAL**  
open science

## Population genetics analysis of *Phlebotomus papatasi* sand flies from Egypt and Jordan based on mitochondrial cytochrome b haplotypes

Catherine Flanley, Marcelo Ramalho-Ortigao, Iliano Coutinho-Abreu, Rami Mukbel, Hanafi Hanafi, Shabaan El-Hossary, Emad El-Din Y. Fawaz, David Hoel, Alexander Bray, Gwen Stayback, et al.

### ► To cite this version:

Catherine Flanley, Marcelo Ramalho-Ortigao, Iliano Coutinho-Abreu, Rami Mukbel, Hanafi Hanafi, et al.. Population genetics analysis of *Phlebotomus papatasi* sand flies from Egypt and Jordan based on mitochondrial cytochrome b haplotypes. *Parasites & Vectors*, 2018, 11 (1), pp.214. 10.1186/s13071-018-2785-9 . pasteur-01953773

**HAL Id: pasteur-01953773**

**<https://riip.hal.science/pasteur-01953773>**

Submitted on 13 Dec 2018

**HAL** is a multi-disciplinary open access archive for the deposit and dissemination of scientific research documents, whether they are published or not. The documents may come from teaching and research institutions in France or abroad, or from public or private research centers.

L'archive ouverte pluridisciplinaire **HAL**, est destinée au dépôt et à la diffusion de documents scientifiques de niveau recherche, publiés ou non, émanant des établissements d'enseignement et de recherche français ou étrangers, des laboratoires publics ou privés.

RESEARCH

Open Access



# Population genetics analysis of *Phlebotomus papatasi* sand flies from Egypt and Jordan based on mitochondrial cytochrome *b* haplotypes

Catherine M. Flanley<sup>1</sup>, Marcelo Ramalho-Ortigao<sup>2</sup>, Iliano V. Coutinho-Abreu<sup>3</sup>, Rami Mukbel<sup>4</sup>, Hanafi A. Hanafi<sup>4</sup>, Shabaan S. El-Hossary<sup>5</sup>, Emad El-Din Y. Fawaz<sup>5</sup>, David F. Hoel<sup>2</sup>, Alexander W. Bray<sup>1</sup>, Gwen Stayback<sup>1</sup>, Douglas A. Shoue<sup>1</sup>, Shaden Kamhawi<sup>3</sup>, Mehmet Karakuş<sup>6</sup>, Kaouther Jaouadi<sup>7</sup>, Mohammad Reza Yaghoobie-Ershadi<sup>8</sup>, Andreas Krüger<sup>9</sup>, Ahmad Amro<sup>10</sup>, Mohamed Amin Kenawy<sup>11</sup>, Mostafa Ramadhan Dokhan<sup>12</sup>, Alon Warburg<sup>13</sup>, Omar Hamarsheh<sup>14†</sup> and Mary Ann McDowell<sup>1\*†</sup>

## Abstract

**Background:** *Phlebotomus papatasi* sand flies are major vectors of *Leishmania major* and phlebovirus infection in North Africa and across the Middle East to the Indian subcontinent. Population genetics is a valuable tool in understanding the level of genetic variability present in vector populations, vector competence, and the development of novel control strategies. This study investigated the genetic differentiation between *P. papatasi* populations in Egypt and Jordan that inhabit distinct ecotopes and compared this structure to *P. papatasi* populations from a broader geographical range.

**Methods:** A 461 base pair (bp) fragment from the mtDNA cytochrome *b* (*cyt b*) gene was PCR amplified and sequenced from 116 individual female sand flies from Aswan and North Sinai, Egypt, as well as Swaimeh and Malka, Jordan. Haplotypes were identified and used to generate a median-joining network,  $F_{ST}$  values and isolation-by-distance were also evaluated. Additional sand fly individuals from Afghanistan, Iran, Israel, Jordan, Libya, Tunisia and Turkey were included as well as previously published haplotypes to provide a geographically broad genetic variation analysis.

**Results:** Thirteen haplotypes displaying nine variant sites were identified from *P. papatasi* collected in Egypt and Jordan. No private haplotypes were identified from samples in North Sinai, Egypt, two were observed in Aswan, Egypt, four from Swaimeh, Jordan and two in Malka, Jordan. The Jordan populations clustered separately from the Egypt populations and produced more private haplotypes than those from Egypt. Pairwise  $F_{ST}$  values fall in the range 0.024–0.648.

(Continued on next page)

\* Correspondence: [mcdowell.11@nd.edu](mailto:mcdowell.11@nd.edu)

†Equal contributors

<sup>1</sup>Eck Institute for Global Health, Department of Biological Sciences, University of Notre Dame, Notre Dame, IN 46556, USA

Full list of author information is available at the end of the article



(Continued from previous page)

**Conclusion:** The clustering patterns and pairwise  $F_{ST}$  values indicate a strong differentiation between Egyptian and Jordanian populations, although this population structure is not due to isolation-by-distance. Other factors, such as environmental influences and the genetic variability in the circulating *Le. major* parasites, could possibly contribute to this heterogeneity. The present study aligns with previous reports in that pockets of genetic differentiation exists between populations of this widely dispersed species but, overall, the species remains relatively homogeneous.

**Keywords:** *Phlebotomus papatasi*, Cytochrome *b*, Sand flies, mtDNA, Egypt, Jordan, Haplotypes, Genetic differentiation, Population genetics

## Background

Approximately 0.7–1.2 million cases of cutaneous leishmaniasis (CL) are reported each year [1]. CL results in damage to the dermis and subcutaneous tissues during infection and complications may arise due to opportunistic bacterial and fungal infections or HIV co-infection [2]. Although the resulting lesions typically self-heal, they leave behind visible life-long scars that trigger social stigmatization of young people in endemic areas, especially females [3–5]. *Phlebotomus papatasi* is the primary vector of *Leishmania major*, one of the causative agents of cutaneous leishmaniasis in the Old World, the Middle East, and North Saharan Desert. *Phlebotomus papatasi* also transmits viruses that cause febrile illness in humans, including sand fly fever Naples virus and sand fly fever Sicilian virus [6].

*Leishmania major* infects approximately 1–2.4% of *P. papatasi* sand flies in Egypt and up to 5.5% in Jordan depending on the season [7, 8]. Different rodent species have been implicated as the reservoir in these countries. In Egypt, the primary reservoir species is *Gerbillus pyramidum* whereas in Jordan, the typical rodent reservoir is *Psammomys obesus* [7, 9]. Approximately 20% of individuals living in at-risk areas in Egypt are infected each year as compared to Jordan where 80% of individuals tested positive for leishmanian skin tests in hyperendemic regions [7, 8].

*Phlebotomus papatasi* boasts a wide geographical distribution ranging from southern Europe around the Mediterranean Sea, northern Africa, the Middle East, and into India. These sand flies are able to inhabit a variety of ecological niches from tropical climates to arid desert [10]. Like other sand fly species, they colonize human housing and animal dwellings including shelters and rodent burrows [11], which provide a safe haven for many sand fly species and are associated with a high risk of transmission due to easy access of reservoir species such as the sand rat, *P. obesus* [12]. Female sand flies opportunistically blood feed from a variety of vertebrate hosts such as humans, dogs, rabbits, chickens and even lizards. The sand flies' potential to expand into novel geographical areas is enhanced by climate change [13, 14]. Considering the large geographical expanse this

sand fly covers and their ability to feed off a plethora of food sources, both plant and animal, the need for vector control is of vital importance to curb *Leishmania* transmission in the Old World. Currently, there is no efficacious vaccine or cure and current treatments can be toxic, time- and cost-prohibitive to those afflicted by poverty and CL, and many people lack access to treatment for cultural reasons or distance from treatment facilities.

Research has shown that exposure to sand fly saliva exacerbates *Le. major* infections in mice but pre-exposure to saliva from uninfected sand fly bites protects mice and attenuates the infection outcome through a delayed-type hypersensitivity immune reaction [15, 16]. These studies highlight the potential of the salivary proteins, such as *P. papatasi* salivary protein 15 (PpSP15), to be used as a vaccine [17–21]. Given their geographical range and limited dispersal ability, it is expected that different *P. papatasi* populations would demonstrate greater genetic diversity complicating the development of a saliva targeted vaccine [22].

Population genetic studies on sand fly vectors provide knowledge concerning speciation, cryptic species, vector dispersal capabilities, population structure, vector competence, and adaptability to changing environmental conditions such as climate, topography and vegetation [23–26]. Although these genetic differences in the genome can be difficult to detect, mitochondrial DNA (mtDNA) genes are commonly employed in population genetics studies due to their inherent sensitivity [23, 25, 27]. These markers have been widely used for population genetics analyses of the New World leishmaniasis sand fly, *Lutzomyia longipalpis* [28, 29]. MtDNA, for example the cytochrome *b* (*cyt b*) gene, is maternally inherited, and its slow rate of silent mutations allow enough differentiation to be detected between closely related populations that are within close geographical vicinity or conversely are separated by large geographical distances [27, 30–32]. The underlying population structure and genetic variability within and among geographically distant populations may influence vectorial capacity thus having epidemiological implications warranting assessment of control strategies to prevent transmission of CL [12, 24].

A variety of molecular markers, in addition to *cyt b*, have been employed to determine genetic variability among *P. papatasi* populations. Genomic DNA markers and DNA microsatellites have been previously utilized and revealed evidence of population subdivision among this species [33, 34]. One study, using mtDNA *cyt b* analysis, observed genetic differentiation among widely separated *P. papatasi* populations [31]. Analysis of mitochondrial DNA is widely used for studying differences between closely related species and closely related populations within close geographical vicinity [31, 35]. In this study, we aimed to understand the population structure and genetic variability of *P. papatasi* in Egypt and Jordan that inhabit distinct ecotopes through *cyt b* sequence analysis and compared this structure to *P. papatasi* populations from a broader geographical range.

## Methods

### Sand flies

*Phlebotomus papatasi* were collected ( $n = 133$ ) from 21 field site and colony populations in 8 countries in 2006, 2007 and 2015 (Fig. 1, Table 1). Laboratory colonies were maintained at the University of Notre Dame (Israeli strain) and sent from the National Institutes of Health (Jordan strain). Field samples were collected from Afghanistan, Egypt, Iran, Jordan, Libya, Tunisia and Turkey. CDC light traps were used for *P. papatasi* collection. Sand flies were transported live to the laboratory and immediately processed or preserved specimens were sent to the University of Notre Dame. *Phlebotomus papatasi* males (the whole fly) and females (the whole fly except the head and last abdominal segments) were used for DNA extraction. Following the protocol outlined by Lane, *P. papatasi* were identified by microscopic examination of female spermateca [36].

### DNA extraction

DNA was extracted using the Invitrogen PureLink® Genomic DNA Mini Kit (Invitrogen Corp., Carlsbad, CA)

according to the manufacturer's specifications. Individual male flies and the bodies of female flies were processed and DNA samples were stored at  $-20\text{ }^{\circ}\text{C}$ .

### PCR amplification and sequencing

The 3'-end of the *cyt b* gene was amplified in 25  $\mu\text{l}$  reaction volume: 10 $\times$  Ex Taq Buffer (Takara Bio USA, Inc., Mountain View, CA), 2.5 mM dNTP mixture (Takara Bio USA, Inc., Mountain View, CA), 5 U/ $\mu\text{l}$  Ex Taq HS (Takara Bio USA, Inc., Mountain View, CA) and 10  $\mu\text{M}$  each primer (CB3: 5'-CA(T/C) ATT CAA CC(A/T) GAA TGA TA-3' and N1N-PDR: 5'-GGT A(C/T)(A/T) TTG CCT CGA (T/A)TT CG(T/A) TAT GA-3') [30].

Samples were amplified in an Eppendorf Mastercycler (Eppendorf Inc., Enfield, CT) using the following protocol: denaturation at  $95\text{ }^{\circ}\text{C}$  for 5 min, followed by 10 cycles at  $94\text{ }^{\circ}\text{C}$  for 30 s,  $40\text{ }^{\circ}\text{C}$  for 30 s,  $72\text{ }^{\circ}\text{C}$  for 1.5 min, followed by 30 cycles at  $94\text{ }^{\circ}\text{C}$  for 30 s,  $45\text{ }^{\circ}\text{C}$  for 30 s,  $72\text{ }^{\circ}\text{C}$  for 1.5 min and a final elongation at  $72\text{ }^{\circ}\text{C}$  for 10 min. Samples were quantified and purity checked using NanoDrop™ Spectrophotometer (NanoDrop Technologies, Wilmington, DE).

Sequences were generated in the University of Notre Dame's Genomics and Bioinformatics Core Facility using the DNA Sanger Sequencing Applied Biosystems 96-capillary 3730xl DNA Analyzer. Sequencing was carried out in both directions and the same primers were used. Sequences were edited using Geneious Pro 5.6.7 [37]. The *cyt b* sequences from 116 individual *P. papatasi* from Egypt and Jordan were analyzed. Twenty-one previously published, haplotypes available on GenBank [31] (accession numbers DQ381815-DQ381835), were included in this analysis as well as haplotypes derived from an additional 17 individual *P. papatasi* from field caught and colony populations originating in Afghanistan, Iran, Israel, Jordan, Libya, Tunisia and Turkey.

Multalin was used to align all *cyt b* sequences [38]. Gaps were treated as missing data, and haplotypes were



**Fig. 1** *Phlebotomus papatasi* population geographical locations. Libya study site is unknown; dot is used solely to indicate the country. Abbreviation: IL/PS, Israel/Palestine

**Table 1** Study site geographical locations

Country	Population name	Code	n	Latitude	Longitude
Egypt and Jordan analysis					
Egypt	Aswan	AW	32	24.1667°N	32.8667°E
	North Sinai	NS	29	30.8333°N	34.1667°E
Jordan	Swaimenh	JS	26	31.8000°N	35.5833°E
	Malka	JM	29	32.6750°N	35.7492°E
Global analysis					
Afghanistan	Mazar-e-Sharif	AF	1	36.6926°N	67.1180°E
	Kunduz		1	36.7286°N	68.8681°E
Turkey	Kuşadası	TR	1	37.8579°N	27.2610°E
	Şanlıurfa		1	37.1674°N	38.7955°E
	Seferihisar		1	38.1951°N	26.8344°E
	Karaburun		1	38.6383°N	26.5127°E
Iran	Ilam	IN	1	33.6350°N	46.4153°E
	Qum		1	34.6399°N	50.8759°E
	Isfahan		1	32.6546°N	51.6680°E
	Kurdistan		1	35.9554°N	47.1362°E
Libya		LB	1		
Israel	Jordan Valley	IL	1	32.6933°N	35.4739°E
	Notre Dame		1		
Jordan	NIH	JO	1		
Tunisia	Ksar, Gafsa	TS	1	34.4274°N	8.8198°E
	Ouled Mhemed, Sidi Bozeid		1	35.0354°N	9.4839°E
	Al-Mitlawi, Gafsa		1	34.3194°N	8.4075°E

generated from FASTA sequences using DnaSP software [39]. For median-joining analysis, Network 5 software [40] was used. Pairwise  $F_{ST}$  values and  $F_{ST}/(1-F_{ST})$  values were calculated using Arlequin [41]. The corrected values were graphed versus geographical distance to elucidate possible isolation of populations by distance. Geographical distances were calculated using GPS coordinates.

**Results**

**Egypt and Jordan analysis**

A 461bp fragment from *P. papatasi* *cyt b* gene from 116 individual sand flies was PCR amplified and sequenced. The primers that hit the 3' end of *cyt b* were found to be an informative region and contain sequence variations that could be used for *P. papatasi* populations. This method has been in use since 1997 [42]. Sand flies were collected in four locations, two each in Egypt and Jordan. Number of flies collected per location were as follows: 32 in Aswan and 29 in North Sinai, Egypt; 26 in Swaimenh and 29 in Malka, Jordan. Alignment of the 116 individual *cyt b* fragment sequences indicated no insertions or deletions. The predicted amino acid sequences

for all 116 fragments were obtained using the *Drosophila* mitochondrial code. A total of 13 haplotypes were identified (Table 2) with nine variant sites. All variant sites resulted from transition changes and no transversions have been identified. Four of the transitions were A→G and five were C→T. None of the variant sites were parsimony informative as only one type of nucleotide transition is present at each variant position. The haplotypes were comprised of a higher AT content (75.9%). The mean nucleotide diversity between all four study sites was 0.0021. Aswan and North Sinai demonstrated nucleotide diversity values of approximately 0.0010 whereas Swaimenh and Malka were approximately 0.0036.

Haplotype PPH04 is the most frequent and found in all four populations investigated; Aswan, Egypt, North Sinai, Egypt, Swaimenh, Jordan and Malka, Jordan (Table 3). Haplotype PPH31 was the next most frequent haplotype and found only in *P. papatasi* populations from Jordan. Haplotype PPH01 was also found in all four populations but with lower frequency than PPH04. No private haplotypes were identified for the NS (Egypt) population, whereas two private haplotypes (PPH22 and PPH23) were found for AW (Egypt) population. The Jordanian collected *P. papatasi* exhibited six private haplotypes; four from Swaimenh (PPH24, PPH25, PPH27 and PPH28) and two from Malka (PPH29 and PPH30). Three haplotypes (PPH13, PPH26 and PPH31) were shared by both Jordan populations.

A median-joining network of the 13 haplotypes depicts the relatedness between the haplotypes (Fig. 2). PPH01 is found at the center of the network, indicating it is the most ancestral haplotype and occurs in individuals from populations found at each study site. The haplotypes that comprise the external nodes of the network are more recently diverged than the internal nodes haplotypes. Only three nucleotide differences were found between the ancestral haplotype (PPH01) and all other haplotypes, while no more than five substitutions were identified between PPH04, which is the most frequent haplotype, and all other haplotypes.

The number of private haplotypes from the two Jordan populations and their clustering in the median-joining network indicate significant genetic differentiation between populations of *P. papatasi* from Egypt and Jordan. Pairwise  $F_{ST}$  values reveal the highest (0.64815) between North Sinai, Egypt and Swaimenh, Jordan (Table 4). The lowest  $F_{ST}$  value (0.02402) occurred between Aswan and North Sinai, both in Egypt. There is also very little genetic differentiation between the two Jordan populations with an  $F_{ST}$  value of 0.03049. Comparisons between Egypt and Jordan populations indicate very great genetic differentiation, as defined by Wright [43]. No correlation was observed between  $F_{ST}/(1-F_{ST})$  values and geographical distance (Fig. 3).



**Table 2** *Phlebotomus papatasi* private cytochrome b haplotypes

461 bp cyt b haplotype	Code	Frequency	Variant character position											
			0	0	1	1	2	2	2	2	4			
			2	5	3	4	0	0	6	7	4			
			7	7	2	4	1	4	7	6	1			
PPH01	AW, NS, JS, JM	7	T	A	T	A	C	A	T	T	A			
PPH04	AW, NS, JS, JM	61	.	.	.	G	.	.	.	.	.			
PPH13	JS, JM	9	.	.	.	.	.	.	.	.	G			
PPH22	AW	2	.	.	.	.	.	.	C	.	.			
PPH23	AW	2	.	.	.	G	T	.	.	.	.			
PPH24	JS	2	.	.	.	.	.	.	.	C	G			
PPH25	JS	1	.	.	.	G	.	G	.	.	G			
PPH26	JS, JM	7	C	.	.	.	.	.	.	.	.			
PPH27	JS	2	.	.	C	.	.	.	.	.	.			
PPH28	JS	1	C	.	.	.	.	.	.	.	.			G
PPH29	JM	1	.	G	.	.	.	.	.	.	.			.
PPH30	JM	1	C	G	.	.	.	.	.	.	.			.
PPH31	JS, JM	20	.	.	.	.	.	G	.	.	.			G

*Phlebotomus papatasi* private cyt b haplotypes from Aswan, Egypt (AW), North Sinai, Egypt (NS), Swaimeh, Jordan (JS) and Malka, Jordan (JM). 461-bp cyt b mtDNA gene. Alignment of variant positions. Dots indicate consensus with the first haplotype sequence, PPH01. PPHXX numbering is out of order to reflect the numbering of identical haplotypes in Fig. 4 and previously published haplotypes [31]

**Global analysis**

We compared previously described haplotypes [31] with the haplotypes identified in this study, as well as haplotypes generated from additional field and colony populations from Afghanistan, Iran, Israel, Jordan, Libya, Tunisia and Turkey. All of these sites taken together provide analysis that incorporates the broad geographical range of this important vector.

Thirty haplotypes were produced with 63 total substitutions at 34 variant sites (see Additional file 1: Table S1). Transitions accounted for 85.7% of the substitutions and 14.3% were transversions. There were equal numbers of A→G and C→T transitions. There were roughly equal numbers of transversions as well. There were 5 A→T transversions and 4 A→C. None of the substitution sites were parsimony informative.

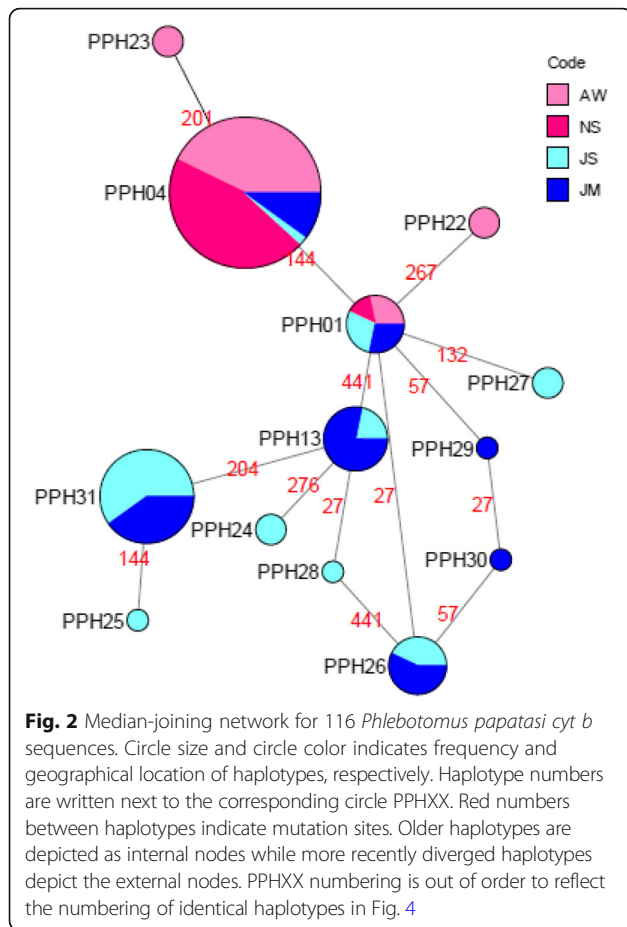
The most frequent haplotype was PPH04 comprised of individuals from Afghanistan, Cyprus, Iran, Jordan, Tunisia, with the majority from Egypt (see

Additional file 2: Table S2). PPH08 is the next most frequent haplotype that includes populations from Cyprus, Egypt, Israel, Palestine, Syria and Turkey. Six haplotypes that occur with the greatest frequencies (PPH01, PPH03, PPH04, PPH08, PPH13 and PPH31) are found in all populations included in this study except for Italy. Thirteen private haplotypes (PPH02, PPH05, PPH06, PPH10, PPH14, PPH15, PPH16, PPH19, PPH20, PPH25, PPH28, PPH29 and PPH30) were generated from Jordan, Turkey, Syria, Italy, Palestine and Egypt.

A median-joining network for the 30 haplotypes was constructed to highlight the relationships between the haplotypes from these widely distributed populations (Fig. 4). PPH01 anchors the network as the most central, ancestral node. This haplotype is found in the majority of populations sampled (Afghanistan, Cyprus, Aswan, Egypt, North Sinai, Egypt, Iran, Israel, Malka, Jordan, Swaimeh, Jordan, Libya, Syria, Tunisia and Turkey). The

**Table 3** Cytochrome b haplotype frequencies found in the Egypt and Jordan *P. papatasi* populations

Country	Population name	Code	Haplotypes PPHXX												
			01	04	13	22	23	24	25	26	27	28	29	30	31
Egypt	Aswan	AW	2	26		2	2								
	North Sinai	NS	1	28											
Jordan	Swaimeh	JS	2	1	2			2	1	3	2	1			12
	Malka	JM	2	6	7					4			1	1	8
Total			7	61	9	2	2	2	1	7	2	1	1	1	20

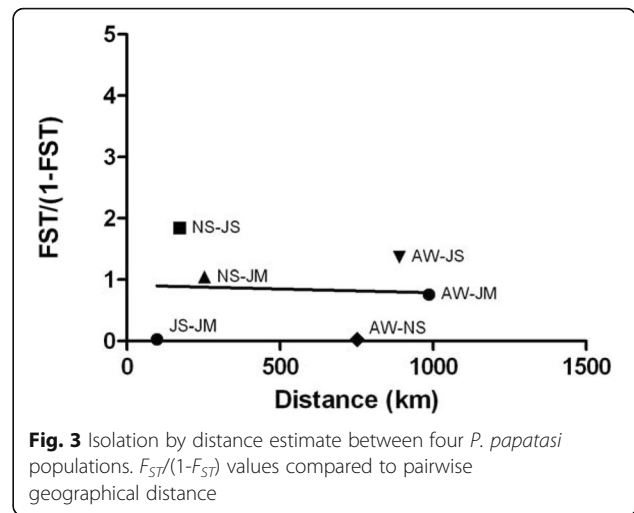


median-joining network analysis demonstrates the same clustering patterns as seen in this study's Egypt and Jordan analysis and with previously published studies [31, 44]. The Egypt and Jordan populations cluster separately as do the haplotypes circulating in the Israel and Palestine populations. PPH04 is the most frequent haplotype in the network. This haplotype includes mainly populations from Egypt. PPH03 diverged from PPH04 with one substitution between the two haplotypes. PPH03 includes populations from Palestine, Jordan, Cyprus, Turkey, Syria, Egypt and Morocco. The haplotypes found in populations circulating in Israel and Palestine also clustered together, as did the Jordan

**Table 4** *Cyt b* genetic differentiation estimates

Population	AW	NS	JS	JM
AW	0	ns	*	*
NS	0.02402	0	*	*
JS	0.57701	0.64815	0	ns
JM	0.43119	0.51076	0.03049	0

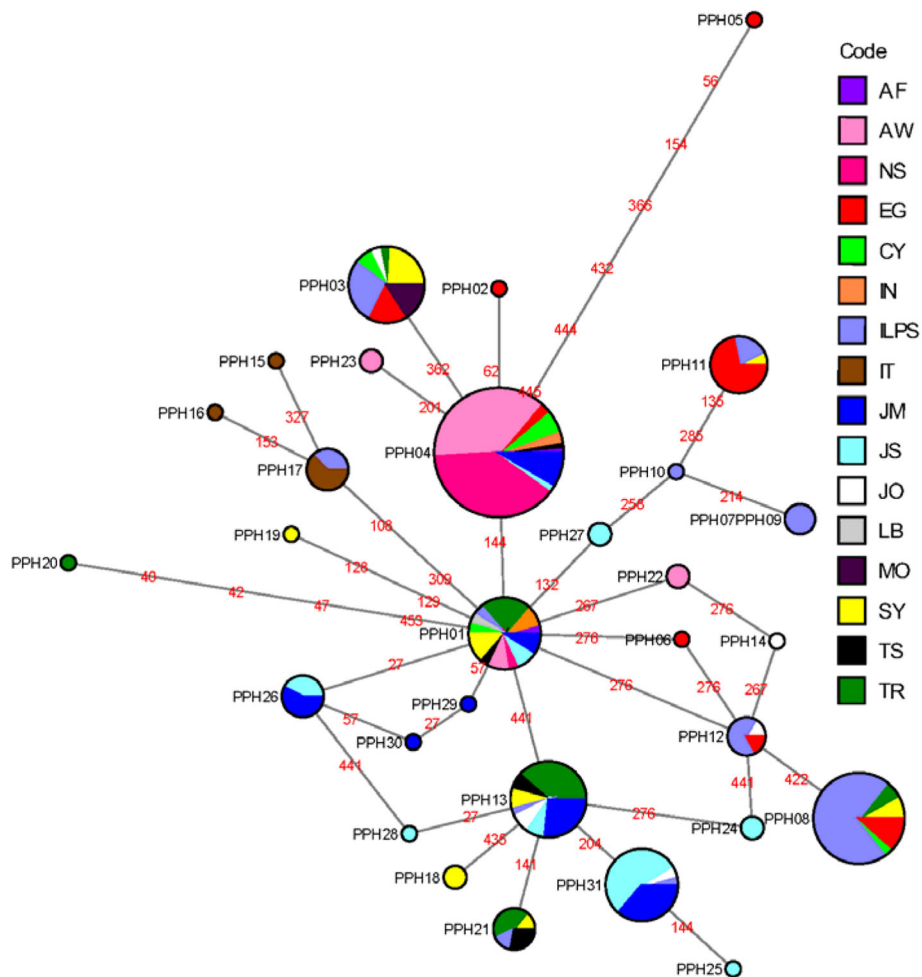
Values below the diagonal are pairwise  $F_{ST}$  values. Values above the diagonal indicate significance (\* $P < 0.01$ ; ns, not significant)



haplotypes; Italy also clustered independently from other regions. It is also important to note that there are few substitutions between the ancestral haplotype, PPH01, and the most recently diverged haplotypes, including rare haplotypes, located at the external nodes. The highest number of substitutions (7) occurs between PPH01 and PPH05.

**Discussion**

This study ascertained the genetic variability of four *P. papatasi* populations from Egypt and Jordan using population genetics analysis of the *cyt b* gene. The median-joining network analysis of Egypt and Jordan populations identified PPH01 as the most ancestral haplotype. This haplotype is present and shared between all four populations and is located almost in the center of the network from which other haplotypes diverged by one or more mutational steps. The majority of Egypt individuals clustered together in PPH04, which is considered the most frequent haplotype in the network. Two private haplotypes (PPH22, PPH23) came from Aswan, Egypt. It was expected that the North Sinai individuals would cluster with the Jordanian samples from Swaimeh and Malka due to their close geographical proximity; approximately 170 and 250 km away, respectively. However, the Egypt populations and the Jordan populations clustered separately. More private haplotypes, occupying external node positions in the median-joining network, arose from Swaimeh, Jordan and Malka, Jordan, indicating these haplotypes are more recently diverged [45]. Previous work by Hamarsheh et al. [34] revealed the presence of two populations of *P. papatasi* from sand flies sampled around the Mediterranean Sea. More specifically, sand flies sampled from Egypt and Jordan clustered into population B, which further arranged into two subpopulations with no indication of geographical



**Fig. 4** Global analysis median-joining network for 17 *Phlebotomus papatasi* populations. Circle size and circle color indicates frequency and geographical location of haplotypes, respectively. Haplotype numbers are written next to the corresponding circle PPHXX. Red numbers between haplotypes indicate mutation sites. Older haplotypes are depicted as internal nodes while more recently diverged haplotypes depict the external nodes. *Abbreviations:* CY, Cyprus; IL/PS, Israel/Palestine; SY, Syria; EG, Egypt; IT, Italy; MO, Morocco

isolation [34]. This study is in agreement with previous work using *cyt b* analysis in that more haplotypes were present in the Jordan, Israel, Palestine region when compared to Egypt [31].

It is interesting to note that the number of private haplotypes present in *P. papatasi* from Jordan ( $n = 6$ ) is greater than those from Egypt ( $n = 2$ ); this may indicate that the Jordanian samples are more heterogeneous than those from Egypt. On the other hand, in Egypt, the Aswan samples look more heterogeneous than the North Sinai samples. The variation of topography, as well as differences between the North Sinai biome, which is a desert area with poor agricultural activity and the Aswan biome, which is more diverse and relies on the High Dam to provide water for extensive agriculture, may provide an explanation for the heterogeneous Aswan population.

The clear variation in clustering between Egypt and Jordan haplotypes suggest genetic differentiation between these populations. Indeed, pairwise  $F_{ST}$  comparisons reveal little genetic differentiation between Aswan and North Sinai in Egypt and Swaimeh and Malka in Jordan but exhibits large differentiation between the Egypt and Jordan study sites. The data suggest significant genetic differentiation between the Egypt and Jordan populations; however, this variation is not attributed to isolation by distance. This result was surprising, but not completely unexpected. As suggested by Khalid et al. [22], genetic differentiation detected between *P. papatasi* collected in Sudan and Egypt was not due to isolation-by-distance even though the study sites were approximately 1600 km apart. Here, as well as the previous study [20, 46, 47], ecological determinants such as the topography, climate, soil conditions and plant cover can influence the distribution of sand flies,



specifically, *P. papatasi*. Moreover, anthropogenic changes can also lead to an increase in the dispersal of sand flies [22]. As a prolific peridomestic species, *P. papatasi* opportunistically inhabit human dwellings increasing the likelihood of disease transmission [6, 48, 49]. It is also possible that the genetic diversity between the Egypt and Jordan populations is influenced by distinct populations of *Le. major* circulating in the same geographical areas [50].

Microsatellite analysis demonstrated a moderate differentiation ( $F_{ST} = 0.1565$ ) between the *Le. major* population in Egypt, ME1 and the Jordan population, ME2, possibly correlating with different native rodent species specific to Egypt and Jordan, as well as, greater biotope diversity in the Middle East [50]. A growing body of evidence continues to reinforce the idea that pathogen and vector genetic variability help shape this close relationship, ultimately driving vector competence [24, 51]. Similarly, isoenzyme analysis revealed that *Le. major* exhibits a high degree of homogeneity with predominantly two zymodemes circulating in the same geographical range as *P. papatasi* [52]. MON25 circulates in north-west Africa with MON26 dominates sub-Saharan Africa, north-east Africa and the Middle East. Although MON26 is the predominant zymodeme in Egypt and Jordan, two minor variants, MON74 and MON103, are also present. MON74 is observed in Africa and MON103 in the Middle East [52]. The minor *Le. major* zymodeme variants may contribute to the genetic diversity seen between the Egypt and Jordan *P. papatasi* populations as well. In a study from Iran, three subpopulations of *Le. major* coincide with three subpopulations of circulating *P. papatasi*, which may be due to topography and human movement [53]. Like other vector-parasite pairings in nature that share a long evolutionary history, *P. papatasi* and *Le. major* may be in a genetic arms-race [54, 55]. Although the mechanism is currently unknown, future studies concerning parasite-vector genetic variation may illuminate if coevolution or other forces influence genetic variation in the two species. Understanding the nuanced evolutionary relationship between *P. papatasi* and *Le. major* will inform *Leishmania* transmission and future control strategies [56].

Additional factors, such as altitude and/or varying rodent species at the different locals [10, 25, 48, 57] could affect the genetic differentiation between the Egypt and Jordan populations and offer an explanation why Jordan has more private haplotypes than Egypt. Aswan and North Sinai, Egypt, are located at altitudes of 117 m and 141 m above sea level, respectively. In Jordan, Swaimeh is located 345 m below sea level whereas Malka is located at 670 m above sea level. Such a difference in altitude between the two Jordanian trapping sites could account for the unequal number of private haplotypes between Swaimeh and Malka (Table 3) [58]. Although altitude itself does not solely determine

ecotope traits, it does influence the vegetation available for *P. papatasi* sugar-feeding as well as potential reservoir species that harbor *Le. major* [25, 50, 53]. Other ecotope differences, such as climate, soil constituents and topography, in addition to different agricultural practices and land cover between Egypt and Jordan could also contribute to the genetic differentiation detected but need further study [23, 59].

Our work not only has an impact in scoring genetic variability between *P. papatasi* populations in Egypt and Jordan, but also in understanding how these populations fit into a more global view of this species' genetic differentiation over a wide geographical range. In accordance with the analysis discussed above, the 30 haplotypes produced similar clustering patterns as observed for Egypt and Jordan as well as align with previously published reports [12, 44]. The Egypt and Jordan populations clustered separately as did the haplotypes circulating in Israel and Palestine populations. The anchoring, and most likely, ancestral node, PPH01, was represented in the majority of populations sampled including, Afghanistan, Cyprus, Egypt, Israel, Iran, Jordan, Libya, Syria, Tunisia and Turkey. The most frequent haplotypes in the network were shared by at least three or more populations. For example, PPH13 was shared by 7 populations and PPH08 is shared by 5, indicating species homogeneity.

This global analysis aligns with other studies [30, 33, 34, 44] demonstrating a relatively homogeneous population despite pockets of genetic variation seen in populations. The common thread connecting this body of literature to the current study is the fact that no clear phylogeographical pattern was observed indicating that although genetic variability exists when *P. papatasi* populations are compared, the species as a whole remains homogenous. Mitochondrial DNA analysis of the *nad4* gene and the second internal transcribed spacer (ITS2) of the ribosomal DNA from 27 populations throughout the Mediterranean Basin, North Africa, Middle East and India, revealed no phylogeographical structure exhibiting molecular homogeneity as well [33]. Restricted gene flow, however, was indicated among populations from Turkey, Yemen, Egypt, Iran and Syria [33]. Using multi-locus microsatellite typing (MLMT) paired with Bayesian statistical analysis, Hamarshah et al. [34], verified highly significant genetic variability between populations from northern Africa, the Middle East, southern Europe, India and Nepal. Even though genetic variability was detected, the overall population structure of *P. papatasi* exhibited two main populations implying species homogeneity [34]. Similar results were obtained by Raja et al. [44] when they analyzed *cyt b* in Tunisian populations of *P. papatasi*. Shared haplotypes were found at different nodes, including external nodes, in their analysis as well as reflected in our analysis with five haplotypes at external

nodes (PPH03, PPH08, PPH11, PPH21 and PPH26) suggesting no phylogeographical pattern [44]. Essegir et al. [30] analyzed the *cyt b* gene of 27 individual *P. papatasi* from 12 countries that produced 17 variant positions and 16 haplotypes. The majority of their haplotypes differed by 1–4 mutations with the highest number of mutations being six. Overall, they determined low genetic variability between wide spread *P. papatasi* populations. Similar mutational differences were observed in this paper as the majority of haplotypes differed by 1–4 mutations from the ancestral haplotype, with the most mutational steps being 7. Although, Essegir et al. [30] reported fewer haplotypes and mutations compared to the present study, their sampling method may have resulted in lower mitochondrial diversity as 18 of their 27 samples were from colony-reared sand flies whereas the majority of sand flies sampled in this study were field collected. Overall, although localized genetic variation exists between populations, when *P. papatasi* populations are sampled over a wide geographical distribution, the species seems to be relatively homogenous making sand fly control strategies possible.

Recent population genetics studies, like the research presented here coupled with future studies that delve into the trifecta of vector-parasite-environment interactions are vital to expose what drives genetic differentiation, how vectorial competency is impacted and changes in vector and parasite dispersal dynamics [24, 51, 60, 61]. With a common goal to decrease the incidence of cutaneous leishmaniasis worldwide, basic biological research informs how best to achieve this goal through targeted vector control, vaccine development, or a combination of strategies.

## Conclusions

The present study confirms the presence of genetic variation between *P. papatasi* populations from Aswan and North Sinai, Egypt, and Swaimah and Malka, Jordan, using the mitochondrial *cyt b* gene. Although the Egypt populations exhibit very great genetic differentiation when compared with the populations from Jordan, this is not due to isolation-by-distance. Other factors, such as genetic variability in the circulating *Le. major* parasites, other environmental conditions, and/or a variety of reservoir and intermediate hosts present for each study site, may contribute to the detected genetic differentiation. The present study aligns with the growing body of literature in that localized or pockets of genetic differentiation exists between the populations of this widely dispersed species but overall, the species remains relatively homogeneous. The continued surveying of sand fly population genetics helps monitor the dispersal dynamics and vector competency as well as informs the development of control strategies against this important *Le. major* vector.

## Additional files

**Additional file 1: Table S1.** *Phlebotomus papatasi* unique cytochrome *b* mt gene haplotypes (461 bp) from geographically distant populations. Alignment of variant positions. Dots indicate consensus with the first haplotype sequence, PPH01. (DOCX 21 kb)

**Additional file 2: Table S2.** Cytochrome *b* haplotype frequencies found in geographically distant *Phlebotomus papatasi* populations. (DOCX 16 kb)

## Acknowledgments

We are grateful to the Egyptian Ministry of Health for their aid and in sand fly collections and the Multi National Force and Observers (MFO) military units for transportation in the Sinai Peninsula. Special gratitude goes to Ms Maria Badra from U.S. Naval Medical Research Unit Number Three (NAMRU-3), Cairo, Egypt, for her organizational skills and support of the work in Egypt. The study protocol was approved by the U.S. Naval Medical Research Unit Number Three (NAMRU-3) Institutional Review Board IRB No. 193, DoD No, NAMRU3.2006.0011, in compliance with all applicable Federal regulations governing the protection of human subjects.

## Funding

This project was supported by contract No. W911NF0410380 from the Department of Defense (DoD) Defense Advanced Research Projects Agency (DARPA) awarded to MAM. OH was supported by a grant from the Eck Institute for Global Health at the University of Notre Dame, a Fulbright Senior Scientist grant, and Zamallah Academic Development Program. CMF was supported by an Arthur J. Schmitt Leadership Fellowship in Science and Engineering and William and Linda Stavropoulos Fellowship in Science. The content is solely the responsibility of the authors and does not necessarily represent the official views of the National Institute of Allergy and Infectious Diseases or the National Institutes of Health of the US Department of Defense.

## Availability of data and materials

The data supporting the conclusions of this article are included within the article and its additional files. All sequences are available in GenBank under accession numbers KY990724-KY990733.

## Disclaimer

DFH is a military service member; MRO, IVCA, HAH, SSEH, EEDYF and SK are employees of the U.S. Government. This work was prepared as part of our official duties. Title 17 U.S.C. §105 provides that 'Copyright protection under this title is not available for any work of the United States Government'. Title 17 U.S.C. §101 defines a U.S. Government work as a work prepared by a military service member or employee of the U.S. Government as part of that person's official duties. The opinions and assertions expressed herein are those of the author(s) and do not necessarily reflect the official policy or position of the Uniformed Services University or the Department of Defense. This work was prepared by a military or civilian employee of the US Government as part of the individual's official duties and therefore is in the public domain and does not possess copyright protection.

## Authors' contributions

CMF maintained sand fly colony, performed sequencing, data analysis and drafted the manuscript. MRO and IVCA participated in sand fly collection and sequencing. RM coordinated collections in Jordan. HAH coordinated collections in Egypt. SSEH and EEDYF participated in Egypt sand fly collections and advised on collection sites. DFH oversaw operations and sand fly collections in Egypt, including acquiring appropriate permissions and permits when necessary. AWB and GS performed sequencing and data analysis. DAS maintained sand fly colony. SK participated in Jordan sand fly collections and advised on collection sites. MK participated in sand fly collection and identification from Turkey. JK participated in sand fly collection and identification from Tunisia. MRY-E participated in sand fly collection and identification from Iran. AK participated in sand fly collection and identification from Afghanistan. AA participated in sand fly collection and identification from Palestine. MAK participated in sand fly collection and identification from Egypt. MRD participated in sand fly collection and identification from Libya. AW participated in sand fly collection and identification from Israel. OH coordinated sand fly collection and transport to ND, advised CMF laboratory work, data analysis, and manuscript drafting. MAM conceived and

coordinated the project and participated in project design, sand fly collections, dissection of salivary glands, and manuscript drafting. All authors read and approved the final manuscript.

#### Ethics approval and consent to participate

The study protocol was approved by the Naval Medical Research Unit No. 3 Institutional Review Board in compliance with all applicable Federal regulations governing the protection of human subjects. IRB No. 193, DoD No. NAMRU3.2006.0011.

#### Consent for publication

Not applicable.

#### Competing interests

The authors declare that they have no competing interests.

#### Publisher's Note

Springer Nature remains neutral with regard to jurisdictional claims in published maps and institutional affiliations.

#### Author details

<sup>1</sup>Eck Institute for Global Health, Department of Biological Sciences, University of Notre Dame, Notre Dame, IN 46556, USA. <sup>2</sup>F. Edward Hebert School of Medicine, Department of Preventive Medicine and Biostatistics, Uniformed Services University of the Health Sciences (USUHS), Bethesda, MD 20814, USA. <sup>3</sup>Laboratory of Malaria and Vector Research, NIAID-NIH, 12735 Twinbrook Parkway, Rockville, MD 20852, USA. <sup>4</sup>Faculty of Veterinary Medicine, Jordan University of Science and Technology, Irbid 22110, Jordan. <sup>5</sup>Vector Biology Research Program, U.S. Naval Medical Research Unit No. 3 (NAMRU-3), Cairo, Egypt. <sup>6</sup>Department of Parasitology, Faculty of Medicine, Ege University, Izmir, Turkey. <sup>7</sup>Department of Medical Epidemiology, Laboratory of Transmission, Control and Immunobiology of Infections (LR11IPT02) Institut Pasteur de Tunis, 13 Place Pasteur BP-74, 1002 Tunis-Belvedere, Tunisia. <sup>8</sup>Department of Medical Entomology & Vector Control, School of Public Health, Tehran University of Medical Sciences, Tehran 1417613151, Iran. <sup>9</sup>Department of Tropical Medicine, Military Hospital Hamburg, Bernhard-Nocht-Straße 74, 20359 Hamburg, Germany. <sup>10</sup>Faculty of Pharmacy, Al-Quds University, Jerusalem, Palestine. <sup>11</sup>Department of Entomology, Faculty of Science, Ain Shams University, Abbassia, Cairo 11566, Egypt. <sup>12</sup>Department of Zoology, Faculty of Science, University of Sabratha, Sabratha, Libya. <sup>13</sup>Department of Microbiology and Molecular Genetics, the Kuvin Center for the Study of Infectious and Tropical Diseases, Faculty of Medicine, Hadassah Medical School, Hebrew University, Jerusalem, Israel. <sup>14</sup>Department of Biological Sciences, Faculty of Science and Technology, Al-Quds University, Jerusalem, Palestine.

Received: 5 September 2017 Accepted: 7 March 2018

Published online: 27 March 2018

#### References

- Alvar J, Vélez ID, Bern C, Herrero M, Desjeux P, Cano J, et al. Leishmaniasis worldwide and global estimates of its incidence. *PLoS One*. 2012;7:e35671.
- Bailey MS, Lockwood DNJ. Cutaneous leishmaniasis. *Clin. Dermatol*. 2007;25:203–11.
- Al-Kamel MA. Impact of leishmaniasis in women: a practical review with an update on my ISD-supported initiative to combat leishmaniasis in Yemen (ELYP). *Int J Women's Dermatol*. 2016;2(3):93–101.
- Feiz-Haddad MH, Kassiri H, Kasiri N, Panahandeh A, Lotfi M. Prevalence and epidemiologic profile of acute cutaneous leishmaniasis in an endemic focus, Southwestern Iran. *J Acute Dis*. 2015;4:292–7.
- Chahed MK, Bellali H, Ben Jemaa S, Bellaj T. Psychological and psychosocial consequences of zoonotic cutaneous leishmaniasis among women in Tunisia: preliminary findings from an exploratory study. *PLoS Negl Trop Dis*. 2016;10:e0005090.
- Maroli M, Feliciangeli MD, Bichaud L, Charrel RN, Gradoni L. Phlebotomine sandflies and the spreading of leishmaniasis and other diseases of public health concern. *Med Vet Entomol*. 2013;27:123–47.
- Morsy TA, Shoukry A, Schnur LF, Sulitzeanu A. *Gerbillus pyramidum* is a host of *Leishmania major* in the Sinai Peninsula. *Ann Trop Med Parasitol*. 1987;81:741–2.
- Kamhawi S, Arbaji A, Adwan S, Rida M. Environmental manipulation in the control of a zoonotic cutaneous leishmaniasis focus. *Arch Inst Pasteur Tunis*. 1993;70:383–90.
- Saliba EK, Disi AM, Ayed RE, Saleh N, Al-Younes H, Oumeish O, et al. Rodents as reservoir hosts of cutaneous leishmaniasis in Jordan. *Ann Trop Med Parasitol*. 1994;88:617–22.
- Colacicco-Mayhugh MG, Masuoka PM, Grieco JP. Ecological niche model of *Phlebotomus alexandri* and *P. papatasi* (Diptera: Psychodidae) in the Middle East. *Int J Health Geogr*. 2010;9:2.
- Janini R, Saliba E, Kamhawi S. Species composition of sand flies and population dynamics of *Phlebotomus papatasi* (Diptera, Psychodidae) in the southern Jordan Valley, an endemic focus of cutaneous leishmaniasis. *J Med Entomol*. 1995;32(6):822.
- Hamarshah O. Distribution of *Leishmania major* zymodemes in relation to populations of *Phlebotomus papatasi* sand flies. *Parasit Vectors*. 2011;4:9.
- Medlock JM, Hansford KM, Van Bortel W, Zeller H, Alten B. A summary of the evidence for the change in European distribution of phlebotomine sand flies (Diptera: Psychodidae) of public health importance. *J Vector Ecol*. 2014;39:72–7.
- Koch LK, Kochmann J, Klimpel S, Cunze S. Modeling the climatic suitability of leishmaniasis vector species in Europe. *Sci Rep*. 2017;7:1–10.
- Belkaid Y, Kamhawi S, Modi G, Valenzuela J, Noben-Trauth N, Rowton E, et al. Development of a natural model of cutaneous leishmaniasis: powerful effects of vector saliva and saliva preexposure on the long-term outcome of *Leishmania major* infection in the mouse ear dermis. *J Exp Med*. 1998;188:1941–53.
- Kamhawi S, Belkaid Y, Modi G, Rowton E, Sacks D. Protection against cutaneous leishmaniasis resulting from bites of uninfected sand flies. *Science*. 2000;290:1351–4.
- Valenzuela JG, Belkaid Y, Garfield MK, Mendez S, Kamhawi S, Rowton ED, et al. Toward a defined anti-*Leishmania* vaccine targeting vector antigens: characterization of a protective salivary protein. *J Exp Med*. 2001;194:331–42.
- Coutinho-Abreu IV, Wadsworth M, Stayback G, Ramalho-Ortigao M, McDowell MA. Differential expression of salivary gland genes in the female sand fly *Phlebotomus papatasi* (Diptera: Psychodidae). *J Med Entomol*. 2010;47:1146–55.
- Coutinho-Abreu IV, Mukbel R, Hanafi HA, Fawaz EY, El-Hossary SS, Wadsworth M, et al. Expression plasticity of *Phlebotomus papatasi* salivary gland genes in distinct ecotopes through the sand fly season. *BMC Ecol*. 2011;11:24.
- Ramalho-Ortigão M, Coutinho-Abreu IV, Balbino VQ, Figueiredo CAS, Mukbel R, Dayem H, et al. *Phlebotomus papatasi* SP15: mRNA expression variability and amino acid sequence polymorphisms of field populations. *Parasit Vectors*. 2015;8:298.
- Oliveira F, Rowton E, Aslan H, Gomes R, Castrovinci PA, Alvarenga PH, et al. A sand fly salivary protein vaccine shows efficacy against vector-transmitted cutaneous leishmaniasis in nonhuman primates. *Sci Transl Med*. 2015;7:290ra90.
- Khalid NM, Aboud MA, Alrabba FM, Elnaiem D-EA, Tripet F. Evidence for genetic differentiation at the microgeographic scale in *Phlebotomus papatasi* populations from Sudan. *Parasit Vectors*. 2012;5:249.
- Ebrahimi S, Bordbar A, Parvizi P. Genetic dynamics in the sand fly (Diptera: Psychodidae) nuclear and mitochondrial genotypes: evidence for vector adaptation at the border of Iran with Iraq. *Parasit Vectors*. 2016;9:319.
- McCoy K. The population genetic structure of vectors and our understanding of disease epidemiology. *Parasite*. 2008;15:444–8.
- Ready PD. Biology of phlebotomine sand flies as vectors of disease agents. *Annu Rev Entomol*. 2013;58:227–50.
- Rinker DC, Pitts RJ, Zwiebel LJ. Disease vectors in the era of next generation sequencing. *Genome Biol*. 2016;17:95.
- Mahamdallie SS, Pesson B, Ready PD. Multiple genetic divergences and population expansions of a Mediterranean sandfly, *Phlebotomus ariasi*, in Europe during the Pleistocene glacial cycles. *Heredit (Edinb)*. 2011;106:714–26.
- Coutinho-Abreu IV, Sonoda IV, Fonseca JA, Melo MA, Balbino VQ, Ramalho-Ortigão M. *Lutzomyia longipalpis* s.l. in Brazil and the impact of the Sao Francisco River in the speciation of this sand fly vector. *Parasit Vectors*. 2008;1:37.
- Hodgkinson VH, Birungi J, Quintana M, Dietze R, Munstermann LE. Mitochondrial cytochrome *b* variation in populations of the visceral leishmaniasis vector *Lutzomyia longipalpis* across eastern Brazil. *Am J Trop Med Hyg*. 2003;69:386–92.

30. Esseghir S, Ready PD, Killick-Kendrick R, Ben-Ismaïl R. Mitochondrial haplotypes and phylogeography of *Phlebotomus* vectors of *Leishmania major*. *Insect Mol Biol*. 1997;6:211–25.
31. Hamarsheh O, Presber W, Abdeen Z, Sawalha S, Al-Lahem A, Schönian G. Genetic structure of Mediterranean populations of the sandfly *Phlebotomus papatasi* by mitochondrial cytochrome *b* haplotype analysis. *Med Vet Entomol*. 2007;21:270–7.
32. Aransay AM, Ready PD, Morillas-Marquez F. Population differentiation of *Phlebotomus perniciosus* in Spain following postglacial dispersal. *Heredity* (Edinb). 2003;90:316–25.
33. Depaquit J, Lienard E, Verzeaux-Griffon A, Ferté H, Bounamous A, Gantier JC, et al. Molecular homogeneity in diverse geographical populations of *Phlebotomus papatasi* (Diptera, Psychodidae) inferred from ND4 mtDNA and ITS2 rDNA. *Epidemiological consequences*. *Infect Genet Evol*. 2008;8:159–70.
34. Hamarsheh O, Presber W, Yaghoobi-Ershadi MR, Amro A, Al-Jawabreh A, Sawalha S, et al. Population structure and geographical subdivision of the *Leishmania major* vector *Phlebotomus papatasi* as revealed by microsatellite variation. *Med Vet Entomol*. 2009;23:69–77.
35. Parvizi P, Ready PD. Molecular investigation of the population differentiation of *Phlebotomus papatasi*, important vector of *Leishmania major*, in different habitats and regions of Iran. *Iran Biomed J*. 2006;10:69–77.
36. Lane RP. The sandflies of Egypt (Diptera: Phlebotominae). *Bull Br Museum (Nat Hist London)*. 1986;52:1–35.
37. Kearse M, Moir R, Wilson A, Stones-Havas S, Cheung M, Sturrock S, et al. Geneious Basic: an integrated and extendable desktop software platform for the organization and analysis of sequence data. *Bioinformatics*. 2012;28:1647–9.
38. Corpet F. Multiple sequence alignment with hierarchical clustering. *Nucleic Acids Res*. 1988;16:10881–90.
39. Librado P, Rozas J. DnaSP v5: a software for comprehensive analysis of DNA polymorphism data. *Bioinformatics*. 2009;25:1451–2.
40. Bandelt HJ, Forster P, Röhl A. Median-joining networks for inferring intraspecific phylogenies. *Mol Biol Evol*. 1999;16:37–48.
41. Excoffier L, Lischer H. Arlequin suite ver 3.5: a new series of programs to perform population genetics analyses under Linux and Windows. *Mol Ecol Resour*. 2010;10:564–7.
42. Ready PD, Day JC, de Souza AA, Rangel EF, Davies CR. Mitochondrial DNA characterization of populations of *Lutzomyia whitmani* (Diptera: Psychodidae) incriminated in the peri-domestic and silvatic transmission of *Leishmania* species in Brazil. *Bull Entomol Res*. 1997;87:187.
43. Wright S. *Evolution and the genetics of populations, variability within and among natural populations*. Chicago: University of Chicago Press; 1978.
44. Raja B, Jaouadi K, Haouas N, Mezhoud H, Bdira S, Amor S. Mitochondrial cytochrome *b* variation in populations of the cutaneous leishmaniasis vector *Phlebotomus papatasi* across eastern Tunisia. *Int J Biodivers Conserv*. 2012;4:189–96.
45. Posada D, Crandall K. Intraspecific gene genealogies: trees grafting into networks. *Trends Ecol Evol*. 2001;16:37–45.
46. Elnaïem DA, Hassan HK, Ward RD. Associations of *Phlebotomus orientalis* and other sandflies with vegetation types in the eastern Sudan focus of kala-azar. *Med Vet Entomol*. 1999;13:198–203.
47. Wasserberg G, Abramsky Z, Anders G, El-Fari M, Schoenian G, Schnur L, et al. The ecology of cutaneous leishmaniasis in Nizzana, Israel: Infection patterns in the reservoir host, and epidemiological implications. *Int J Parasitol*. 2002; 32:133–43.
48. Killick-Kendrick R. The biology and control of phlebotomine sand flies. *Clin Dermatol*. 1999;17:279–89.
49. Parvizi P, Mauricio I, Aransay AM, Miles MA, Ready PD. First detection of *Leishmania major* in peridomestic *Phlebotomus papatasi* from Isfahan province, Iran: comparison of nested PCR of nuclear ITS ribosomal DNA and semi-nested PCR of minicircle kinetoplast DNA. *Acta Trop*. 2005;93:75–83.
50. Al-Jawabreh A, Diezmann S, Müller M, Wirth T, Schnur LF, Strelkova MV, et al. Identification of geographically distributed sub-populations of *Leishmania (Leishmania) major* by microsatellite analysis. *BMC Evol Biol*. 2008;8:183.
51. Gooding RH. Genetic variation in arthropod vectors of disease-causing organisms: obstacles and opportunities. *Clin Microbiol Rev*. 1996;9:301–20.
52. Pratlong F, Dereure J, Ravel C, Lami P, Balard Y, Serres G, et al. Geographical distribution and epidemiological features of Old World cutaneous leishmaniasis foci, based on the isoenzyme analysis of 1048 strains. *Trop Med Int Heal*. 2009; 14:1071–85.
53. Mahnaz T, Al-Jawabreh A, Kuhls K, Schönian G. Multilocus microsatellite typing shows three different genetic clusters of *Leishmania major* in Iran. *Microbes Infect*. 2011;13:937–42.
54. Poinar G. Early Cretaceous trypanosomatids associated with fossil sand fly larvae in Burmese amber. *Mem Inst Oswaldo Cruz*. 2007;102:635–7.
55. Ramalho-Ortigao M, Saraiva EM, Traub-Csekö YM. Sand fly-*Leishmania* interactions: long relationships are not necessarily easy. *Open Parasitol J*. 2010;4:195–204.
56. Akhoundi M, Kuhls K, Cannet A, Votýpka J, Marty P, Delaunay P, et al. A historical overview of the classification, evolution, and dispersion of *Leishmania* parasites and sandflies. *PLoS Negl Trop Dis*. 2016;10:e0004349.
57. Orshan L, Elbaz S, Ben-Ari Y, Akad F, Afik O, Ben-Avi I, et al. Distribution and dispersal of *Phlebotomus papatasi* (Diptera: Psychodidae) in a zoonotic cutaneous leishmaniasis focus, the northern Negev, Israel. *PLoS Negl Trop Dis*. 2016;10:e0004819.
58. Zhang L, Ma Y, Xu J. Genetic differentiation between sandfly populations of *Phlebotomus chinensis* and *Phlebotomus sichuanensis* (Diptera: Psychodidae) in China inferred by microsatellites. *Parasit Vectors*. 2013;6:115.
59. Coutinho-Abreu IV, Ramalho-Ortigao M. Ecological genomics of sand fly salivary gland genes: An overview. *J Vector Ecol*. 2011;(36):58–63.
60. Tabachnick WJ, Black WC IV. Making a case for molecular population genetic studies of arthropod vectors. *Parasitol Today*. 1995;11:27–30.
61. Bates PA, Depaquit J, Galati EAB, Kamhawi S, Maroli M, McDowell MA, et al. Recent advances in phlebotomine sand fly research related to leishmaniasis control. *Parasit Vectors*. 2015;8:131.

Submit your next manuscript to BioMed Central and we will help you at every step:

- We accept pre-submission inquiries
- Our selector tool helps you to find the most relevant journal
- We provide round the clock customer support
- Convenient online submission
- Thorough peer review
- Inclusion in PubMed and all major indexing services
- Maximum visibility for your research

Submit your manuscript at  
[www.biomedcentral.com/submit](http://www.biomedcentral.com/submit)

