



Study on causes of fever in primary healthcare center uncovers pathogens of public health concern in Madagascar

Julia Guillebaud, Barivola Bernardson, Tsiry Hasina
Randriambolamanantsoa, Laurence Randrianasolo, Jane Léa
Randriamampionona, Cesare Augusto Marino, Voahangy Rasolofo, Milijaona
Randrianarivelosia, Inès Vigan-Womas, Voula Stivaktas, et al.

► To cite this version:

Julia Guillebaud, Barivola Bernardson, Tsiry Hasina Randriambolamanantsoa, Laurence Randrianasolo, Jane Léa Randriamampionona, et al.. Study on causes of fever in primary healthcare center uncovers pathogens of public health concern in Madagascar. PLoS Neglected Tropical Diseases, 2018, 12 (7), pp.e0006642. 10.1371/journal.pntd.0006642 . pasteur-01973716

HAL Id: pasteur-01973716

<https://riip.hal.science/pasteur-01973716>

Submitted on 8 Jan 2019

HAL is a multi-disciplinary open access archive for the deposit and dissemination of scientific research documents, whether they are published or not. The documents may come from teaching and research institutions in France or abroad, or from public or private research centers.

L'archive ouverte pluridisciplinaire **HAL**, est destinée au dépôt et à la diffusion de documents scientifiques de niveau recherche, publiés ou non, émanant des établissements d'enseignement et de recherche français ou étrangers, des laboratoires publics ou privés.



Distributed under a Creative Commons Attribution 4.0 International License

RESEARCH ARTICLE

Study on causes of fever in primary healthcare center uncovers pathogens of public health concern in Madagascar

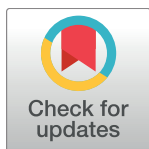
Julia Guillebaud¹, Barivola Bernardson^{1,2}, Tsiry Hasina Randriambolamanantsoa¹, Laurence Randrianasolo², Jane Léa Randriamampionona^{2,3}, Cesare Augusto Marino¹, Voahangy Rasolofo⁴, Milijaona Randrianarivelosia⁵, Ines Vigan-Womas⁶, Voula Stivaktas⁷, Marietjie Venter⁷, Patrice Piola^{2☯*}, Jean-Michel Héraud^{1☯*}

1 Virology Unit, Institut Pasteur de Madagascar 101, Antananarivo, Madagascar, **2** Epidemiology Unit, Institut Pasteur de Madagascar 101, Antananarivo, Madagascar, **3** Direction de la Veille Sanitaire et de la Surveillance Épidémiologique, Ministry of Public Health 101, Antananarivo, Madagascar, **4** Mycobacterial Unit, Institut Pasteur de Madagascar 101, Antananarivo, Madagascar, **5** Malaria Research Unit, Institut Pasteur de Madagascar 101, Antananarivo, Madagascar, **6** Immunology of Infectious Diseases Unit, Institut Pasteur de Madagascar 101, Antananarivo, Madagascar, **7** Emerging and Respiratory Virus Program, Centre for Viral Zoonoses, University of Pretoria, Pretoria, South Africa

☯ These authors contributed equally to this work.

* Current address: Epidemiology Unit, Institut Pasteur of Cambodia, Phnom Penh, Cambodia

* jmheraud@pasteur.mg



OPEN ACCESS

Citation: Guillebaud J, Bernardson B, Randriambolamanantsoa TH, Randrianasolo L, Randriamampionona JL, Marino CA, et al. (2018) Study on causes of fever in primary healthcare center uncovers pathogens of public health concern in Madagascar. *PLoS Negl Trop Dis* 12(7): e0006642. <https://doi.org/10.1371/journal.pntd.0006642>

Editor: Robin L. Bailey, London School of Hygiene & Tropical Medicine, UNITED KINGDOM

Received: January 15, 2018

Accepted: June 28, 2018

Published: July 16, 2018

Copyright: © 2018 Guillebaud et al. This is an open access article distributed under the terms of the [Creative Commons Attribution License](https://creativecommons.org/licenses/by/4.0/), which permits unrestricted use, distribution, and reproduction in any medium, provided the original author and source are credited.

Data Availability Statement: All relevant data are within the paper and its Supporting Information files.

Funding: This work was supported by the US Agency for International Development (USAID) (Grant No. AID-687-G-13-00003), and the US Centers for Disease Control and Prevention (Grant No. 5U51IP000812-02). The funders had no role in study design, data collection and analysis, decision

Abstract

Background

The increasing use of malaria diagnostic tests reveals a growing proportion of patients with fever but no malaria. Clinicians and health care workers in low-income countries have few tests to diagnose causes of fever other than malaria although several diseases share common symptoms. We propose here to assess etiologies of fever in Madagascar to ultimately improve management of febrile cases.

Methodology

Consenting febrile outpatients aged 6 months and older were recruited in 21 selected sentinel sites throughout Madagascar from April 2014 to September 2015. Standard clinical examinations were performed, and blood and upper respiratory specimens were taken for rapid diagnostic tests and molecular assays for 36 pathogens of interest for Madagascar in terms of public health, regardless of clinical status.

Principal findings

A total of 682 febrile patients were enrolled. We detected at least one pathogen in 40.5% (276/682) of patients and 6.2% (42/682) with co-infections. Among all tested patients, 26.5% (181/682) had at least one viral infection, 17.0% (116/682) had malaria and 1.0% (7/682) presented a bacterial or a mycobacterial infection. None or very few of the highly prevalent infectious agents in Eastern Africa and Asia were detected in this study, such as zoonotic bacteria or arboviral infections.

to publish, or preparation of the manuscript. The findings and conclusions in this report are those of the authors and do not necessarily represent the official position of US Agency for International Development, the US Centers for Disease Control and Prevention, or the Institut Pasteur de Madagascar.

Competing interests: The authors have declared that no competing interests exist.

Conclusions

These results raise questions about etiologies of fever in Malagasy communities. Nevertheless, we noted that viral infections and malaria still represent a significant proportion of causes of febrile illnesses. Interestingly our study allowed the detection of pathogens of public health interest such as Rift Valley Fever Virus but also the first case of laboratory-confirmed leptospirosis infection in Madagascar.

Author summary

Febrile illnesses have many origins, but infectious agents are the most important cause. Pathogens such as viruses and bacteria can cause various diseases, but associated signs and symptoms are generally non-specific and can overlap between diseases. Treatments of infectious diseases rely on the diagnostic of the causative agent however laboratory capacities are often lacking in resources-limited settings. Thus, health care workers generally follow clinical management guidelines that are rarely supported by information on the prevalence of local infections. The main objective of our study was to describe the common causes of fever in individuals presenting at outpatient healthcare center in Madagascar. Respiratory viruses, malaria and viral infection in the blood were the main infectious agents detected. Implementation of new diagnostic tools such as bedside testing (Point of Care Testing) could help health care workers to improve diagnosis and care of febrile patients. Detection of other pathogens such as hepatitis B virus, human immunodeficiency virus (HIV) or agent responsible for tuberculosis enhances the need for extended prevention, surveillance and detection of these infections. Interestingly, our study reported cases of leptospirosis and Rift Valley Fever virus infection that are pathogens of high public health concern.

Introduction

Febrile illness is one of the most common causes of consultations especially in developing countries[1]. A large range of infectious agents may be involved but clinical presentations are often non-specific, hence compromising the validity of diagnosis made with only clinical features[2]. The recent widespread use of rapid diagnosis tests (RDTs) for the diagnostic of malaria infection combined with malaria control interventions lead to a decreasing proportion of confirmed malaria illnesses[3]. Clinical management guidelines for febrile illnesses have been developed but are often syndrome-based[4] and clinical diagnosis can rarely be confirmed as clinical laboratory services are markedly lacking in low-income settings[5]. Clinicians frequently encounter non-malarial febrile cases with few paraclinical options to diagnose and treat patients. Several studies in Eastern Africa[6–9] and Asia[10,11] highlighted the importance of non-malarial infections such as bacterial zoonoses or arboviral infections, which could be prevented and correctly treated if biologically confirmed.

Madagascar is a large island located in the South-Western part of the Indian Ocean that presents different bioclimates and a broad spectrum of malaria transmission. Fever cases are under surveillance since 2007 with the implementation by the Ministry of Public Health (MoH) and the Institut Pasteur de Madagascar (IPM) of a Fever Sentinel Surveillance Network (FSSN) composed of 34 primary health care centers throughout the country[12,13]. This

network aims at closely monitoring the following epidemic-prone diseases: malaria, influenza-like illnesses (ILI), Dengue-like Syndromes (DLS) and diarrheal syndromes. From 2008 to 2011, this surveillance revealed that fever is responsible for 11.1% of total outpatients; Among recorded febrile cases, malaria accounted for 12.0%, ILI for 20.7%, DLS for 8.7% and diarrheal diseases for 4.7% [14]. However, only malaria is laboratory confirmed using RDTs following national policies.

Little data is available in Madagascar on the prevalence of other non-malarial infections in humans such as leptospirosis, relapsing fever, rickettsia infection and other less prominent infections [15–19]. The primary objective of our study was to identify the common causes of fever in outpatients attending healthcare centers in Madagascar.

Methods

Study design

A cross-sectional prospective study was conducted in twenty-one sentinel sites (Fig 1) across Madagascar which are representative of the island's diversity in bioclimates and urban/rural settings. Sites were randomly selected among the 34 sites encompassed in the FSSN. One mobile team from IPM composed of a clinician and a laboratory technician visited all sites during pre-defined periods between April 2014 and September 2015. We used historical data from the FSSN database to estimate the duration of investigation in each site to reach the number of inclusions. Time of investigation for each site was determined according to various criteria such as availability of the local doctor and team, accessibility of the site and availability of liquid nitrogen. As the objective of our study is to provide a national description of causes of febrile illnesses in a countrywide sentinel network, an overall sample size of 685 consenting patients was deemed adequate to have sufficient precision for prevalent diseases and to detect infrequent pathogens. Hence, the amount of sentinel sites led to a convenience sampling of at least 30 and up to 40 febrile patients per site. A standardized clinical examination was performed and all consenting patients with fever were included and sampled regardless of clinical status.

Ethics approval and consent to participate

The study protocol was reviewed and approved by the Malagasy National Ethics Committee (approval #CNE 013-MSANP/CE of 26 March 2014). An informed written consent was provided to patients or parents/guardians for children before inclusion and an additional consent form for HIV testing was also provided for every patient included. All samples were anonymized prior to laboratory testing. Two databases were created: one containing all clinical characteristics with names of patients and another one for laboratory results. Both were linked with a unique identifying code for each patient. Individual results of laboratory investigations were returned by mail to health care center clinicians and patients as soon as available.

Clinical assessment

Each patient attending the study facilities and presenting an uncorrected axillary temperature equal to or exceeding 37.5°C were invited to participate in the study. Exclusion criteria were children aged below 6 months. Written consent was obtained from adult participants and from parents or legal guardians of minors. Additionally, written assent was obtained from patients between 7 and 17 years old. A single anonymous number was attributed to each patient. Voluntary HIV screening (Alere Determine HIV-1/2 according to National HIV Program policies) was also proposed with an additional consent form. Refusal to HIV testing was not an exclusion criterion. Malaria Rapid Diagnostic Test (RDT) (CareStart Malaria HRP2/

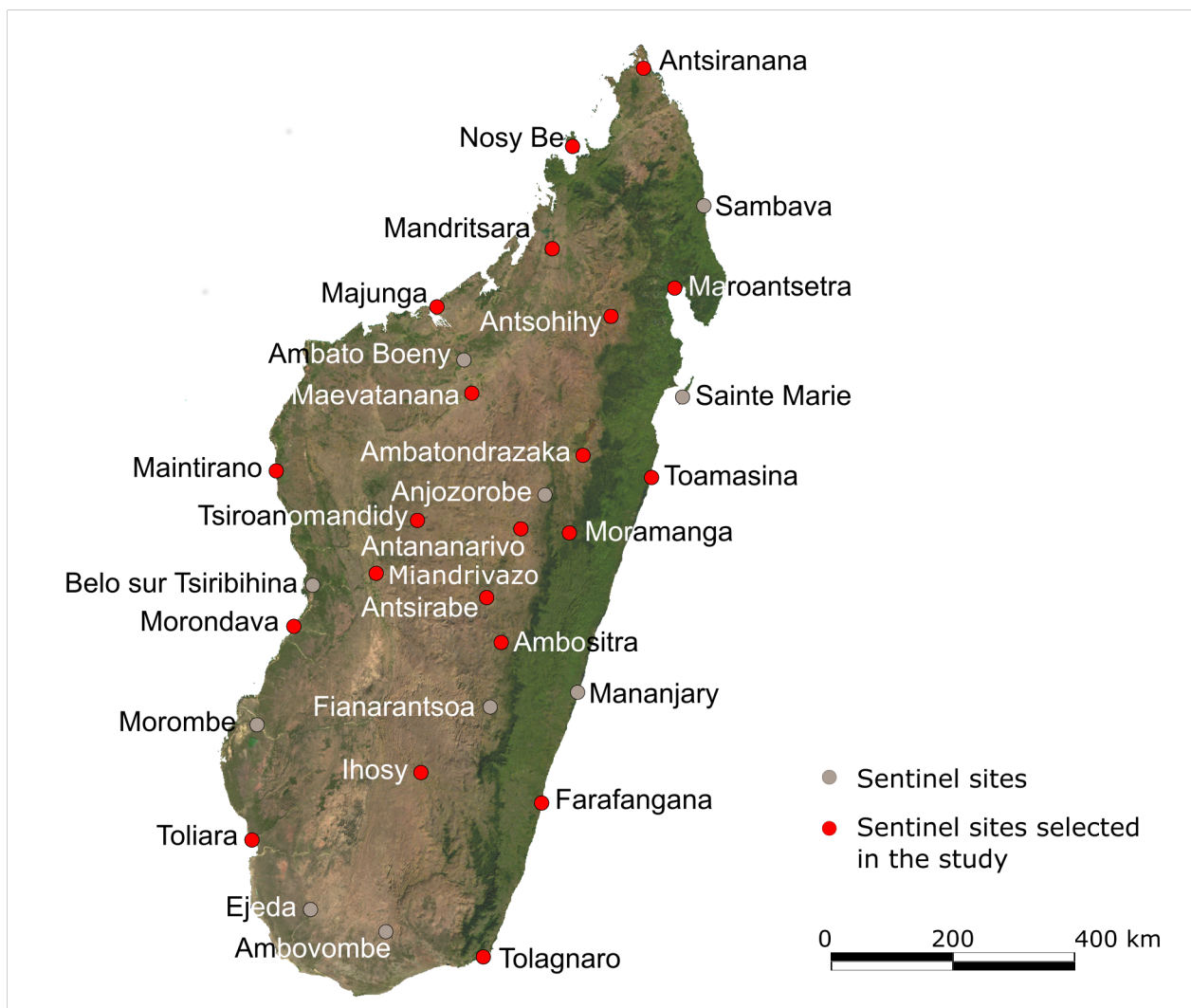


Fig 1. Map of Madagascar showing the 21 sentinel sites selected for the study. [Source: This map was generated using a free source of public domain available at: <http://www.maplibrary.org/library/stacks/Africa/Madagascar/index.htm>].

<https://doi.org/10.1371/journal.pntd.0006642.g001>

pLDH (Pf/PAN) Combo, ACCESSBIO) was completed on each febrile patient according to national policies.

A comprehensive clinical examination was performed by the study clinician and a standardized clinical form recorded basic epidemiological and anthropometrical data (S1 Text). A patient with chronic malnutrition was defined as a child below 5 years old with a height-for-age Z-score < -2 Standard Deviation (SD) and a patient with severe acute malnutrition (SAM) as a child below 5 years old with weight-for-height Z-score < -3 SD[20]. A total of 49 signs and symptoms were recorded for each participant. Clinical case management of patients was performed by the medical staff of the health center according to national treatment guidelines. Clinical classification of febrile patients was performed according to case definitions used in the FSSN. ILI followed WHO case definition and was defined as a patient presenting a measured axillary temperature equal or exceeding 37.5°C and cough with onset of symptoms within 10 days and not requiring hospitalization[21]. A malaria case was defined as a patient presenting a measured axillary temperature equal or exceeding 37.5°C and a positive malaria

RDT (MoH, FSSN). DLS was defined as a patient presenting a measured axillary temperature equal or exceeding 37.5°C and at least two of the following signs: arthralgia, myalgia, headache, rash, retro-orbital pain, hemorrhagic syndrome, in absence of any other suspicious infection—malaria, ILI (MoH, FSSN). Febrile diarrhea followed WHO case definition and was defined as a patient presenting a measured axillary temperature equal or exceeding 37.5°C and presenting the passage of three or more loose or liquid stools per day[22].

Sampling and laboratory investigations

Nasopharyngeal and/or throats swabs were performed for all patients using Copan swabs and Universal Transport Medium (Copan Diagnostics) in order to detect four respiratory viruses known for their significant prevalence in acute respiratory infections in Madagascar[23]: Influenza A (IAV), Influenza B (IBV), Rhinovirus (HRV) and Respiratory Syncytial Virus (RSV). Molecular techniques were used following the National Influenza Center's procedures using protocol from the U.S Centers for Disease Control and Prevention (CDC) for influenza typing (Influenza A/B Typing Kit) and an in-house real time RT-PCR duplex for HRV and RSV detection[23].

Patients with productive cough and able to produce sputum had an expectoration sample for tuberculosis screening. Sputum slides were prepared in the field according to the Tuberculosis National Laboratory and stored at room temperature until microscopic examination at the Mycobacteria Unit of IPM; culture of expectorations was performed on Löwenstein-Jensen medium using standard methods back at IPM.

Dried blood spot (DBS) were performed for each patient to perform molecular analysis for malaria species identification using the Malaria Research Unit procedures[24,25].

A whole blood sample (EDTA) was taken to investigate bloodstream infections. When venous sampling was impossible (children below 3 years old, patients refusing venous blood sampling), capillary blood samples were performed using microtube and capillary system (MiniCollect EDTA, Greiner Bio-One). A multiplex PCR-based macroarray assay (Chipron, GmbH), developed and validated at the Emerging vector-borne and respiratory virus program, Centre for Viral Zoonoses, University of Pretoria, South Africa, was used for simultaneous detection of 30 pathogens (S1 Table). The methods previously described[26] combined conventional multiplex PCR with hybridization of biotinylated PCR products to streptavidin labeled probes on a macroarray chip (Chipron GmbH), followed by colorimetric detection. Briefly, each specimen is subjected to 2 multiplex PCR reactions containing biotinylated primers targeted to the 30 pathogens. Subsequently, the PCR products are denatured and hybridized to the chip surface which is coated with target probes directed against each of the 30 pathogens. A positive reaction is detected by addition of streptavidin-conjugated enzyme and substrate, resulting in the development of a color precipitate.

All samples were stored in an electrical cooler at +4°C and were aliquoted and stored in liquid nitrogen within 24h until lab testing. Upper respiratory samples, DBS, sputum slides and samples were tested upon arrival at the central laboratory at IPM. Whole blood samples were first handled for RNA/DNA extraction at the central lab in Madagascar before shipment to the University of Pretoria for grouped analysis.

Data management and statistical analysis

Data were entered in two Microsoft Access databases (Microsoft Corp, Va., USA) for patient's data and laboratory findings and linked by the single identification number. Statistical analyses were performed using StataIC 13.1 (Statacorp, College Station, TX). Chi-squared tests were used to compare proportions and categorical variables among groups. Values of $p < 0.05$ were considered significant. Bivariate analysis was performed on all symptoms and syndromes

recorded against laboratory findings; symptoms and/or syndromes with a p-value below 0.2 were assessed in a logistic regression and symptoms and/or symptoms with significant OR were retained.

Results

Patient's characteristics and clinical diagnoses

A total of 685 febrile patients were recruited, and only 682 were included for analysis because 3 had insufficient volume of blood collected. Logistic constraints in the site of Maroantsetra have prevented us from reaching the objective of inclusion thus only 28 febrile patients were included. Table 1 presents number of febrile patients included per site and age group. A total of 346 (50.7%) female and 336 (49.3%) male was recruited (F:M ratio = 1.0). Age of patients ranged from 0.5 to 68 years old (mean = 13.5 years, median = 8 years). Patients under 15 years represented 63.0% (429/682) of total inclusions. There was an interval up to 2 days between onset of symptoms and consultation for 59.4% of patients (405/682). The median interval was 2 days, and the mean was 4 days. The median temperature recorded was 38.1°C ranging from 37.5°C to 40.6°C (mean = 38.3°C) with no significant difference between age group and site of inclusion.

Among children below 5 years, the prevalence of chronic malnutrition was 41.7% (111/266) with a wide variation depending on sites (0% to 72.7%). Severe acute malnutrition was present in 6.8% (18/266) of under-fives reaching 23.1% in the site of Farafangana. The S2 Table gives further information on chronic and severe acute malnutrition among enrolled children under 5 years per site.

Table 1. Number of inclusions per site and age group.

Sites of investigation	N	Age group									
		<5 y.		5–14 y.		15–24 y.		25–49 y.		≥50 y.	
Antananarivo	42	14	33%	10	24%	7	17%	9	21%	2	5%
Farafangana	39	13	33%	10	26%	10	26%	5	13%	1	2%
Maintirano	41	16	39%	10	24%	6	15%	7	17%	2	5%
Nosy Be	42	10	24%	7	17%	10	24%	13	31%	2	4%
Ihosa	41	24	58%	6	15%	4	10%	6	15%	1	2%
Maroantsetra	28	7	25%	10	36%	5	18%	5	18%	1	3%
Ambatondrazaka	30	10	33%	10	33%	5	17%	3	10%	2	7%
Toamasina	30	6	20%	4	13%	7	24%	9	30%	4	13%
Mahajanga	30	13	43%	9	30%	5	17%	2	7%	1	3%
Maevatanana	30	13	43%	8	27%	5	17%	3	10%	1	3%
Antsiranana	30	14	46%	9	30%	3	10%	2	7%	2	7%
Tsiroanomandidy	30	13	43%	4	13%	11	37%	2	7%	0	0%
Ambositra	30	11	37%	11	37%	4	13%	4	13%	0	0%
Morondava	30	22	74%	7	23%	0	0%	1	3%	0	0%
Miandrivazo	30	15	50%	6	20%	5	17%	4	13%	0	0%
Mandritsara	30	7	23%	11	37%	8	27%	3	10%	1	3%
Antsohihy	30	14	47%	9	30%	4	13%	3	10%	0	%
Toliara	30	12	40%	2	7%	8	27%	7	23%	1	3%
Sambava	30	7	23%	8	27%	9	30%	6	20%	0	0%
Taolagnaro	30	15	50%	6	20%	2	7%	7	23%	0	0%
Moramanga	29	11	38%	7	24%	4	14%	7	24%	0	0%
Total	682	266	39%	163	24%	124	18%	108	16%	21	3%

<https://doi.org/10.1371/journal.pntd.0006642.t001>

Amongst all recorded symptoms and syndromes, we reported 360 cases with headaches (52.8%), 359 cases presenting asthenia (52.6%), 348 cases with catarrh (51.0%), 336 cases with cough (49.3%) and 311 cases presenting anorexia (45.7%). According to case definitions used in the FSSN, 46.8% (319/682) of patients presented an ILI, 17.0% (116/682) had RDT-confirmed malaria, 13.9% (95/682) presented a DLS, and 11.1% (76/682) had febrile diarrhea (Fig 2). ILI and diarrhea cases were significantly more prevalent in children below 5 ($p < 0.001$) with respective proportions of 66.9% and 22.2%. Dengue-like Syndromes were more prevalent in patients older than 5 years (22.6%; $p < 0.001$).

Laboratory findings and clinical characteristics

Among the 36 pathogens tested, at least one was found in 40.5% (276/682) (Table 2). This proportion varies per age groups from 27.8% (30/108) in adults 25 to 49 years old to 44.4% (118/266) in children below 5 years of age. Positivity rates of the most prevalent pathogens were 17.0% (116/682) for malaria, 8.7% (59/682) for rhinoviruses, 8.4% (57/682) for both A and B influenza viruses, 6.5% (44/682) for Epstein-Barr virus and 3.7% (25/682) for respiratory syncytial viruses.

Malaria prevalence using RDT varied with sites of investigation from 0.0% in Antananarivo and Moramanga up to 53.3% in Antsohihy. Malaria positivity rate differed per age groups with 12.0% (32/266) in below 5 years, 23.3% (38/163) in 5 to 14 years, 22.6% (28/124) in 15 to 24 years, 12.0% (13/108) in 25 to 49 years and 23.8% (5/21) in above 50 years old (S3 Table). Patients aged 5 years, and more were at higher risk of being infected with malaria compared to children less than 5 years old ($p = 0.006$).

Molecular tests could be performed on 98.8% (674/682) of DBS. *P. falciparum* was detected in 17.1% (115/674) of specimens, *P. vivax* in 0.9% (6/674) and *P. malariae* in 0.1% (1/674). Among them, three cases of co-infection with *P. falciparum* and *P. vivax* were identified.

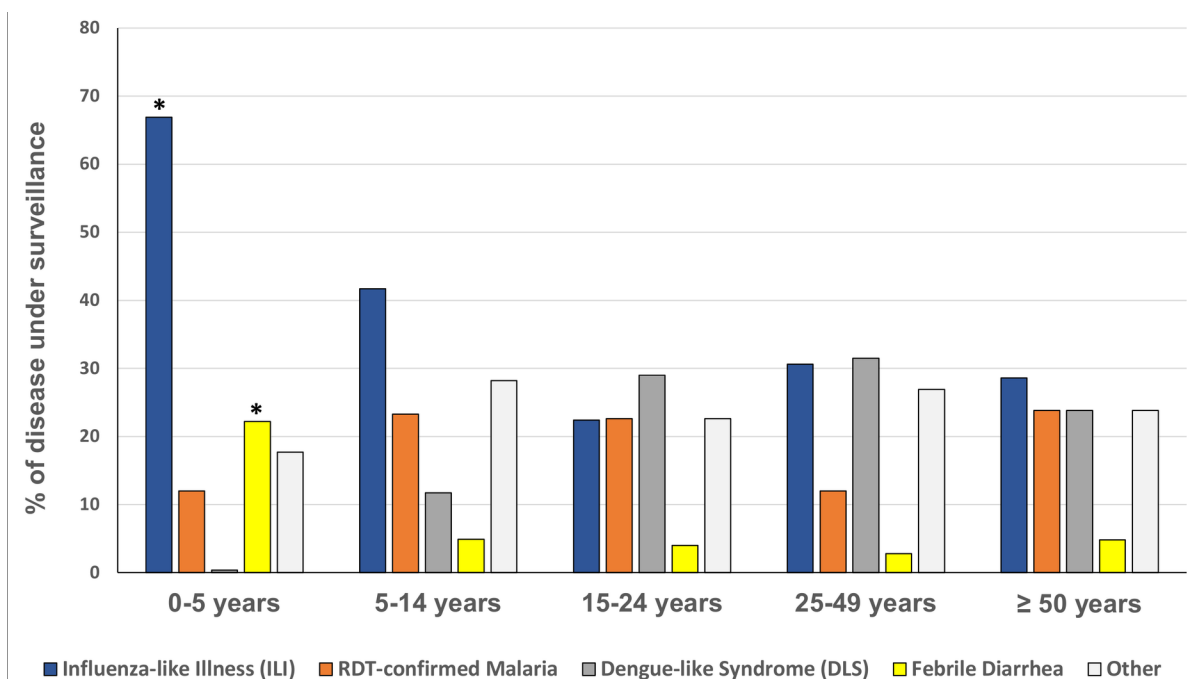


Fig 2. Proportions of diseases under surveillance within the FSSN according to their respective case definition. * p -value < 0.05 .

<https://doi.org/10.1371/journal.pntd.0006642.g002>

Table 2. Distribution of groups of infection and pathogens detected among febrile patients (N = 682).

Pathogens	Overall n = 682 (%)	<5 years n = 266 (%)	5–14 years n = 163 (%)	15–24 years n = 124 (%)	25–49 years n = 108 (%)	≥50 n = 21 (%)
No pathogen detected	406 (59.5)	148 (55.6)	91 (55.8)	76 (61.3)	78 (72.2)	13 (61.9)
Malaria (RDT)	116 (17.0)	32 (12.0)	38 (23.3)	28 (22.6)	13 (12.0)	5 (23.8)
Virus infections ¹	181 (26.5)	97 (36.5)	42 (25.8)	21 (16.9)	17 (15.8)	4 (19.1)
HRV	59 (8.7)	31 (11.7)*	12 (7.4)	11 (8.9)	5 (4.6)	-
IAV/IBV	57 (8.4)	18 (6.8)	21 (12.9)	11 (8.9)	6 (5.6)	1 (4.8)
EBV	44 (6.5)	29 (10.9)*	6 (3.7)	1 (0.8)	4 (3.7)	4 (19.1)
RSV	26 (3.8)	22 (8.3)*	4 (2.5)	-	-	-
HBV	6 (0.9)	1 (0.4)	2 (1.2)	1 (0.8)	2 (1.9)	-
AdV	2 (0.3)	2 (0.8)	-	-	-	-
CMV	1 (0.2)	1 (0.4)	-	-	-	-
HAV	1 (0.2)	-	-	-	1 (0.9)	-
RVFV	1 (0.2)	-	1 (0.6)	-	-	-
VZV	1 (0.2)	1 (0.4)	-	-	-	-
HIV ³	1 (0.2) ³	-	-	-	1 (1.1) ³	-
Bacterial infections	7 (1.0)	1 (0.4)	1 (0.6)	1 (0.8)	3 (2.8)	1 (4.8)
<i>M. tuberculosis</i> ²	4 (0.6)	-	-	-	3 (2.8)	1 (4.8)
<i>Leptospira</i> spp.	1 (0.2)	-	-	1 (0.8)	-	-
<i>N. meningitidis</i>	2 (0.3)	1 (0.4)	1 (0.6)	-	-	-

Abbreviations: RDT = Rapid diagnostic Test; HRV = Human Rhinoviruses; IAV/IBV = Influenza viruses A and B; EBV = Epstein-Barr virus; RSV = Respiratory Syncytial Virus; HBV = Hepatitis B virus; ADV = Adenovirus; CMV = Cytomegalovirus; HAV = Hepatitis A virus; RVFV = Rift Valley Fever virus; VZV = Varicella Zoster virus; HIV = Human Immunodeficiency virus.

¹ HRV, IAV/IBV and RSV were detected from respiratory specimens. EBV, HBV, ADV, CMV, HAV, RVFV and VZV were detected from blood specimens.

² We only tested patient presenting with cough (n = 23) assuming that patients without cough are non-tuberculosis cases.

³ Due to unavailability of rapid test for HIV at the beginning of the study, patients in Antananarivo couldn't be screened for HIV; A total of 15 patients refused HIV screening. Thus we screened 625 patients including 91 adults aged 25–49 years for HIV and this number was taken as denominator in the calculation of the positivity rate.

* p-value < 0.05

<https://doi.org/10.1371/journal.pntd.0006642.t002>

Compared to PCR, malaria RDTs sensitivity was 91.6% [CI95: 85.1–95.9] and specificity was 98.8% [CI95: 97.5–99.5].

Amongst the 682 upper respiratory tract specimens, 20.2% (138/682) tested positive for at least one respiratory virus. Influenza A and B represented respectively 4.4% (30/682) and 4.0% (27/682) of infection. Rhinovirus (HRV) and Respiratory Syncytial Virus were respectively detected in 8.4% (59/682) and 3.8% (26/682) of respiratory specimens. Both were significantly more detected in children less than 5 years (p-values of <0.001 with RSV and 0.03 with HRV).

Overall respiratory viruses were more likely to be detected in children below 5 (p = 0.002). Epstein-Barr virus (EBV) was detected in 6.5% (44/682) of patients and significantly more in children below 5 years (29/44) (p < 0.001); among them 27.3% (12/44) were co-infected with *Plasmodium*. In total, we screened 625 (91.6%) patients for HIV. One female patient tested positive and was confirmed with subsequent tests according to national guidelines. A total of 23 sputa were collected in patients with productive cough and able to produce sputum. The overall positivity rate for *Mycobacterium tuberculosis* infection was 0.6% (4/682) but is higher at 17.4% (4/23) when considering only patients able to produce sputum. Hepatitis A (HAV) and B (HBV) were detected respectively in 0.1% (1/682) and 0.9% (6/682) of patients.

Among HBV positive patients, three were children below 5 years, two were adolescents (13 and 15 years old) and two were adults (33 and 40 years old). All children presented different abdominal pain (peri umbilical pain, gastralgia and suprapubic pain) and tested positive for malaria, and thus treated accordingly. Adenovirus (ADV) and *Neisseria meningitidis* were each found in 0.3% (2/682) of patients. Cytomegalovirus (CMV), Varicella Zoster virus (VZV) and *Leptospira spp* were detected in 0.1% (1/682) each. Leptospirosis infection was detected in a patient aged 17 years presenting with a high fever (39.7°C) associated with headaches, asthenia, myalgia, chills, nausea, anorexia, malaise, dark urines and tachycardia, and clinically diagnosed with cholecystitis. Leptospirosis infection was subsequently confirmed with PCR[27] and melting temperature superimposition indicated that the strain was related to *L. kirshnerii* and *L. noguchii* strains. One case of infection with Rift Valley Fever virus (RVFV) was also identified in a 7 years old patient clinically diagnosed with mumps and confirmed by sequencing.

Co-infections represented 6.2% (42/682) of fever and 15.2% of infections (42/276), of which 90.5% (38/42) with 2 pathogens and 9.5% (4/42) with 3 pathogens. Patients infected with at least one virus accounted for 26.5% (181/682). Among the 46.8% (319/682) patients who presented an ILI, 29.8% (95/319) presented a respiratory virus infection with the following pathogens: 13.8% (44/319) influenza virus (A or B), 9.7% (31/319) HRV and 7.5% (24/319) RSV. Three patients were co-infected with IAV and HRV and one with HRV and RSV. Otherwise 8.2% (26/319) had positive malaria RDT, 7.2% (23/319) were infected with EBV, 0.9% (3/319) with *M. tuberculosis*, 0.6% (2/319) with ADV, 0.3% (1/319) with CMV, 0.3% (1/319) with VZV and 0.3% (1/319) with *N. meningitidis*. Among the 13.9% (95/682) who presented a DLS, no arboviral infection was detected. However, 10.5% (10/95) had a respiratory virus infection with the following pathogens: 6.3% (6/95) with IAV and IBV, and 4.2% (4/95) with HRV. 3.2% (3/95) of patients presented an infection with EBV, 1.1% (1/95) with HBV and 1.1% (1/95) with *Leptospira spp*. Among the 11.1% (76/682) presenting with febrile diarrhea, 22.4% (17/76) had a respiratory virus infection as followed: 11.8% (9/76) with HRV, 7.9% (6/76) with RSV and 2.6% (2/76) with influenza virus (A and B). 9.2% (7/76) presented an EBV infection, 4.0% (3/76) had malaria, 1.3% (1/76) had CMV infection and 1.3% (1/76) had VZV infection. The Table 3 presents results of detection per syndrome/disease under surveillance in the FSSN.

Logistic regression of all symptoms and syndromes showed that clinical anemia (OR: 4.9; [CI95: 2.3–10.3]), vomiting (OR: 3.3; [CI95: 2.0–5.4]), headaches (OR: 3.1; [CI95: 1.8–5.6]), chills (OR: 2.5; [CI95: 1.5–4.2]), and sweat (OR: 2.0; [CI95: 1.1–3.6]) were statistically associated with RDT confirmed malaria. Similarly, catarrh, cough, headache and conjunctivitis were statistically associated to Influenza infection with respective OR of 8.2 [CI95: 3.3–20.3], 2.7 [CI95: 1.3–5.4], 2.5 [CI95: 1.2–5.0] and 2.0 [CI95: 1.1–3.7] (S4 and S5 Tables). In our study, WHO ILI case definition[21] had a sensitivity of 77% and a specificity of 56%. Among all patients positive for Influenza virus, 22.8% (13/57) did not meet the WHO ILI case definition as they did not have cough.

Discussion

Our study aimed at identifying pathogens associated to febrile illnesses in Madagascar. To our knowledge, few studies on etiologies of fever have targeted outpatients' febrile diseases etiologies widely in a country[10,11], as most focused on severe illnesses and/or children[6,28,29]. Due to non-specificity of some infections and the varieties of pathogens that may circulate concomitantly in tropical countries like Madagascar, laboratory confirmation is needed to estimate the prevalence of each of the pathogens associated to febrile illnesses in the community. We detected at least one pathogen in almost half of the febrile outpatients attending our 21 sentinel sites throughout the country. In this study, ILI was the leading cause of consultation, which is in line

Table 3. Distribution of infection detected per syndrome/disease under surveillance within the Fever Sentinel Surveillance Network.

	Fever Sentinel Surveillance Network				
	ILI (n = 319)	Malaria (n = 116)	DLS (n = 95)	Diarrhea (n = 76)	Other (n = 155)
IAV/IBV	95 (29.8%)	1 (0.9%)	6 (6.9%)	2 (2.6%)	6 (3.4%)
HRV	31 (9.7%)	12 (10.3%)	4 (4.2%)	9 (11.8%)	12 (7.7%)
RSV	24 (7.5%)	2 (1.7%)	-	6 (7.9%)	-
Malaria	26 (8.2%)	-	-	3 (4.0%)	-
EBV	23 (7.2%)	12 (10.3%)	3 (3.2%)	7 (9.2%)	5 (3.2%)
HBV	-	4 (3.4%)	1 (1.1%)	-	-
HAV	-	-	-	-	1 (0.6%)
ADV	2 (0.6%)	-	-	-	-
CMV	1 (0.3%)	-	-	1 (1.3%)	-
VZV	1 (0.3%)	-	-	1 (1.3%)	-
RVFV	-	-	-	-	1 (0.6%)
HIV	-	-	-	-	1 (0.6%)
<i>N. meningitidis</i>	-	-	-	-	1 (0.6%)
<i>Leptospira spp</i>	-	-	1 (1.1%)	-	-
<i>M. tuberculosis</i>	3 (0.9%)	-	-	-	1 (0.6%)

Abbreviation: IAV/IBV = Influenza viruses A and B; HRV = Human Rhinoviruses; RSV = Respiratory Syncytial Virus; EBV = Epstein-Barr virus; HBV = Hepatitis B virus; HAV = Hepatitis A virus; ADV = Adenovirus; CMV = Cytomegalovirus; VZV = Varicella Zoster virus; RVFV = Rift Valley Fever virus; HIV = Human Immunodeficiency virus.

<https://doi.org/10.1371/journal.pntd.0006642.t003>

with our laboratory results as respiratory viruses were the predominant pathogens detected. Due to financial constraints, we only tested four of these viruses that were found as the most prevalent in previous studies[23,30]. Thus, our detection rate (20.2%) may represent an underestimate in light that other common respiratory viruses such as parainfluenza viruses, human metapneumovirus and coronaviruses might have been detected. This result is consistent with other studies [8,10] where proportions of respiratory viruses detected in nasopharyngeal swabs varied between 11% and 20% and where acute respiratory infections were the major cause of healthcare seeking behavior. In our study, two thirds of patients were under 15 years of age thus explaining the high prevalence of acute respiratory infections[31,32]. Malaria was the second etiology detected followed by viral infection detected in the blood. One patient tested positive for HIV and had a clinical presentation of low grade fever, asthenia, mild cough, lymphadenopathy and leucorrhea. This patient previously tested positive for HIV but had been lost to follow-up on treatment. This situation highlights the need to strengthen screening, care, treatment and follow-up of HIV infections in Madagascar, despite the low prevalence of the infection in the country compared to neighboring African countries[33]. We found a prevalence of active Tuberculosis (TB) infection of 0.6% which is higher than estimated prevalence of tuberculosis in Madagascar (237 per 100 000 populations per year in 2016)[34]. This could emphasize the underestimation of TB diagnosis in health care centers. In addition, TB in children is often missed due to non-specific symptoms and difficulties in diagnosis, thus our results might also underestimate the number of TB cases since we were only able to test patients with productive cough and able to produce sputum. We used predominantly molecular assays to detect pathogens in specimens, allowing high sensitivity of detection although carriage may not necessarily be related to the clinical event[35]. A comparison group of healthy individuals would have allowed us to describe the background level of carriage in the asymptomatic population and estimate the probability that a detected pathogen is truly responsible of the illness. To detect potential multiple infections, we performed the same analyses on all patients regardless of their clinical status. We are aware that this approach cannot

be used in an operational manner, but some infrequent pathogens would have been missed if tests had been guided by clinical characteristics. Thus, it allows us to obtain a deeper profile of febrile-associated pathogens. But more importantly, our study allowed us to detect one case of infection with *Leptospira* spp. To our knowledge, this is the first leptospirosis laboratory-confirmed case detected in Madagascar, in Maroantsetra, a city located in a per humid area of the eastern coast. To date, all studies regarding leptospirosis in Madagascar are related to its reservoir or based on serological surveys[15,17]. Only three cases of human leptospirosis infection have already been described since 1955 and only one case of molecular confirmation has been described in La Réunion in a patient with an history of travel to Madagascar[15,36]. As described in previous leptospirosis case reports, this patient presented a suspicion of cholecystitis[37,38]. Interestingly, no bacterial zoonoses diseases like Q fever or rickettsiosis described in other studies to be largely incriminated in fever cases[6,39] were detected, nor arboviral infections. None of the 13.9% of Dengue-like Syndromes were confirmed with dengue virus or other common arboviruses tested, although investigation by IgM ELISA may detect cases that have passed the viremic phase otherwise missed by molecular tests. This emphasizes the low Positive Predictive Value of the DLS case definition when arboviruses (including dengue and chikungunya viruses) prevalence is low and probably its overall limited specificity. HBV was detected in the blood of six patients (0.9%) of which three were children below 5 years. Madagascar has a high-intermediate level of endemicity for HBV infection[40]. National immunization program introduced HBV vaccine in 2002 as part of the pentavalent vaccine after the age of six weeks. These results emphasize not only the need to improve vaccination coverage and prevention of mother to child transmission but also the necessity of scheduling a vaccine dose at birth to avoid perinatal infections. One case of infection with RVFV was detected in a child with initial mumps clinical diagnosis. Several RVFV epidemics occurred in Madagascar in past years[41,42] but as far as we know, no human case was identified during inter-epidemic periods. Our recent data on malnutrition in children less than 5 years are in line with the Millennium Development Goals (MDG) survey 2012–2013, highlighting the need to continue and expand interventions in Madagascar to tackle these conditions.

This study presents some limitations. Indeed, due to resource constraint, some specimens like urine and stools were not collected and we also did not perform hemoculture from blood specimen. Thus, some pathogens associated to sepsis, enteric and urinary tract infections were not investigated. Despite the high sensitivity and specificity of the assay used to detected blood stage infections (Venter et al. 2014), some blood pathogens (such as *Coxiella burnetii* or rickettsial infections) are present at very low levels and nearly impossible to detect in whole blood. Blood cultures and antibodies tests must be used. This might partially explain the percentage of febrile patients with no pathogen detected. The cross-sectional design of our study did not allow assessment of temporal variation of pathogens circulation within the country or a specific area. Given the seasonal pattern of some pathogens (respiratory viruses, malaria, other vector borne diseases) and the design of our study (we visited each site once in a year), we have probably underestimated and/or overestimated some of these pathogens. This is the reason why a comparison of pathogens detected per region is not feasible. Moreover, we believe that the grouping of sites per region or bioclimatic area would not be applicable in this study design. Indeed, socio-economic factors or local transmission pattern of some infectious agents (i.e.: tuberculosis, malaria) would impose separate analysis. Further study should be considered to assess seasonality of fever cases and infectious agents, especially in Madagascar where various bioclimatic regions are encountered. Another limitation is due to the inclusion of mainly patients aged below 15 years overestimating pathogens prevalent in children. However, this age imbalance reflects the true demographics of patients attending health care in Madagascar, where socioeconomic status, travel distance to the facilities and care utilization largely

influence healthcare-seeking behavior[43,44]. Nevertheless, the results of our study draw an overview of most prevalent pathogens associated with fever in the country and provide relevant information for further investigations.

Our study contributed to an inventory of pathogens associated to febrile illnesses in Madagascar. Respiratory viruses and malaria are the major causes of febrile illnesses in outpatients. We detected one case of leptospirosis infection and one case of Rift Valley Fever virus infection highlighting a probable circulation of these two pathogens at low level in certain regions of Madagascar since no outbreaks or cases have been reported for these two diseases at the time of our study. Moreover, detections of pathogens such as HAV, HBV and HIV emphasize the need to increase prevention, surveillance, detection and support of these infections. The results of this operational research could help health authorities to prioritize sensitization programs for major febrile illnesses and lay the foundation for relevant Point of Care systems implementation to improve diagnosis and care of febrile patients in Madagascar.

Supporting information

S1 Text. Standardized clinical form used during the study.

(DOCX)

S1 Table. List of pathogens tested by the macroarray assay developed and validated at the emerging vector borne and respiratory virus program, Centre for Viral Zoonoses, University of Pretoria, South Africa.

(DOCX)

S2 Table. Chronic and severe acute malnutrition among enrolled children under 5 years per site (n = 266).

(DOCX)

S3 Table. Distribution of RDT-confirmed malaria patients (RDT+) among febrile patients (n) per site and age groups.

(DOCX)

S4 Table. Logistic regression table of symptoms explored for RDT-confirmed malaria patients (RDT+).

(DOCX)

S5 Table. Logistic regression table of symptoms/syndromes explored for influenza-confirmed patients (IAV/IBV).

(DOCX)

Acknowledgments

We especially express our gratitude to all patients who participated in the study. We also thank caregivers from all health care facilities included in this study and health authorities from Ministry of Public Health for their great support in facilitating this work. We particularly acknowledge the National Program for HIV/AIDS and the National Committee against HIV/AIDS for their material support to allow HIV screening. We thank Ms. Elisabeth Ravaoarisoa from the Malaria Research Unit and Ms. Pascaline Elisabeth Ravolonandriana from the Mycobacteria Unit at IPM for their laboratory support in testing specimens for malaria and tuberculosis. We are also grateful to Rado Lalaina Rakotoarison, Zely Arivelo Randriamanantany from the Immunology of Infectious Diseases Unit at IPM for confirming the Leptospirosis infection

case. We finally thank Ms. Hanitra Raharimampianina and Andotiana Rakotohaingomahefa for their strong administrative supports.

Author Contributions

Conceptualization: Julia Guillebaud, Laurence Randrianasolo, Voahangy Rasolofo, Milijaona Randrianariveolosia, Patrice Piola, Jean-Michel Héraud.

Data curation: Julia Guillebaud, Voula Stivaktas.

Formal analysis: Julia Guillebaud, Cesare Augusto Marino, Milijaona Randrianariveolosia, Ines Vigan-Womas, Voula Stivaktas.

Funding acquisition: Patrice Piola, Jean-Michel Héraud.

Investigation: Julia Guillebaud, Barivola Bernardson, Tsiry Hasina Randriambolamanantsoa.

Methodology: Julia Guillebaud, Laurence Randrianasolo, Jane Léa Randriamampionona, Voahangy Rasolofo, Milijaona Randrianariveolosia, Voula Stivaktas, Marietjie Venter, Patrice Piola.

Project administration: Laurence Randrianasolo, Jane Léa Randriamampionona, Patrice Piola.

Resources: Tsiry Hasina Randriambolamanantsoa, Laurence Randrianasolo, Jane Léa Randriamampionona, Milijaona Randrianariveolosia, Marietjie Venter.

Supervision: Barivola Bernardson, Tsiry Hasina Randriambolamanantsoa, Voahangy Rasolofo, Milijaona Randrianariveolosia, Marietjie Venter, Patrice Piola, Jean-Michel Héraud.

Validation: Julia Guillebaud, Cesare Augusto Marino, Milijaona Randrianariveolosia, Ines Vigan-Womas, Marietjie Venter, Patrice Piola, Jean-Michel Héraud.

Visualization: Julia Guillebaud.

Writing – original draft: Julia Guillebaud, Patrice Piola, Jean-Michel Héraud.

Writing – review & editing: Julia Guillebaud, Barivola Bernardson, Voahangy Rasolofo, Milijaona Randrianariveolosia, Marietjie Venter, Patrice Piola, Jean-Michel Héraud.

References

1. Feikin DR, Olack B, Bigogo GM, Audi A, Cosmas L, Aura B, et al. The Burden of Common Infectious Disease Syndromes at the Clinic and Household Level from Population-Based Surveillance in Rural and Urban Kenya. *PLoS ONE* [Internet]. 2011 Jan 18 [cited 2016 Nov 9]; 6(1). Available from: <http://www.ncbi.nlm.nih.gov/pmc/articles/PMC3022725/>
2. Crump JA, Ramadhani HO, Morrissey AB, Msuya LJ, Yang L-Y, Chow S-C, et al. Invasive bacterial and fungal infections among hospitalized HIV-infected and HIV-uninfected children and infants in northern Tanzania. *Trop Med Int Health* TM IH. 2011 Jul; 16(7):830–7. <https://doi.org/10.1111/j.1365-3156.2011.02774.x> PMID: 21470347
3. O'Meara WP, Mangan JN, Steketee R, Greenwood B. Changes in the burden of malaria in sub-Saharan Africa. *Lancet Infect Dis*. 2010 Aug 1; 10(8):545–55. [https://doi.org/10.1016/S1473-3099\(10\)70096-7](https://doi.org/10.1016/S1473-3099(10)70096-7) PMID: 20637696
4. Young M, Wolfheim C, Marsh DR, Hammam D. World Health Organization/United Nations Children's Fund Joint Statement on Integrated Community Case Management: An Equity-Focused Strategy to Improve Access to Essential Treatment Services for Children. *Am J Trop Med Hyg*. 2012 Nov 7; 87(5 Suppl):6–10.
5. Archibald LK, Reller LB. Clinical microbiology in developing countries. *Emerg Infect Dis*. 2001; 7(2):302–5. <https://doi.org/10.3201/eid0702.700302> PMID: 11294729
6. Crump JA, Morrissey AB, Nicholson WL, Massung RF, Stoddard RA, Galloway RL, et al. Etiology of Severe Non-malaria Febrile Illness in Northern Tanzania: A Prospective Cohort Study. *PLoS Negl Trop*

- Dis [Internet]. 2013 Jul 18 [cited 2016 Nov 9]; 7(7). Available from: <http://www.ncbi.nlm.nih.gov/pmc/articles/PMC3715424/>
7. D'Acremont V, Lengeler C, Genton B. Reduction in the proportion of fevers associated with *Plasmodium falciparum* parasitaemia in Africa: a systematic review. *Malar J*. 2010 Aug 22; 9:240. <https://doi.org/10.1186/1475-2875-9-240> PMID: 20727214
8. D'Acremont V, Kilowoko M, Kyungu E, Philipina S, Sangu W, Kahama-Maró J, et al. Beyond Malaria—Causes of Fever in Outpatient Tanzanian Children. *N Engl J Med*. 2014 Feb 27; 370(9):809–17. <https://doi.org/10.1056/NEJMoa1214482> PMID: 24571753
9. O'Meara WP, Mott JA, Laktabai J, Wamburu K, Fields B, Armstrong J, et al. Etiology of Pediatric Fever in Western Kenya: A Case–Control Study of *Falciparum* Malaria, Respiratory Viruses, and Streptococcal Pharyngitis. *Am J Trop Med Hyg*. 2015 May 6; 92(5):1030–7. <https://doi.org/10.4269/ajtmh.14-0560> PMID: 25758648
10. Kasper MR, Blair PJ, Touch S, Sokhal B, Yasuda CY, Williams M, et al. Infectious Etiologies of Acute Febrile Illness among Patients Seeking Health Care in South-Central Cambodia. *Am J Trop Med Hyg*. 2012 Feb 1; 86(2):246–53. <https://doi.org/10.4269/ajtmh.2012.11-0409> PMID: 22302857
11. Mueller TC, Siv S, Khim N, Kim S, Fleischmann E, Arie F, et al. Acute Undifferentiated Febrile Illness in Rural Cambodia: A 3-Year Prospective Observational Study. *PLoS ONE* [Internet]. 2014 Apr 22 [cited 2016 Nov 9]; 9(4). Available from: <http://www.ncbi.nlm.nih.gov/pmc/articles/PMC3995936/>
12. Randrianasolo L, Raelina Y, Ratsitorahina M, Ravolomanana L, Andriamandimby S, Heraud J-M, et al. Sentinel surveillance system for early outbreak detection in Madagascar. *BMC Public Health*. 2010 Jan 21; 10:31. <https://doi.org/10.1186/1471-2458-10-31> PMID: 20092624
13. Rajatonirina S, Heraud J-M, Randrianasolo L, Orelle A, Razanajatovo NH, Raelina YN, et al. Short message service sentinel surveillance of influenza-like illness in Madagascar, 2008–2012. *Bull World Health Organ*. 2012 May 1; 90(5):385–9. <https://doi.org/10.2471/BLT.11.097816> PMID: 22589573
14. Rajatonirina S, Rakotomanana F, Randrianasolo L, Razanajatovo NH, Andriamandimby SF, Ravolomanana L, et al. Early-warning health and process indicators for sentinel surveillance in Madagascar 2007–2011. *Online J Public Health Inform* [Internet]. 2014 Dec 15 [cited 2017 Dec 15]; 6(3). Available from: <https://www.ncbi.nlm.nih.gov/pmc/articles/PMC4292534/>
15. Desvars A, Michault A, Bourhy P. Leptospirosis in the western Indian Ocean islands: what is known so far? *Vet Res*. 2013; 44(1):80.
16. Ribot JJ, Coulanges P. [Zoonoses in Madagascar]. *Arch Inst Pasteur Madagascar*. 1982; 50(1):147–66. PMID: 6897900
17. Ratsitorahina M, Rahelinirina S, Michault A, Rajerison M, Rajatonirina S, Richard V. Has Madagascar Lost Its Exceptional Leptospirosis Free-Like Status? *PLoS ONE* [Internet]. 2015 Apr 14 [cited 2016 Nov 9]; 10(4). Available from: <http://www.ncbi.nlm.nih.gov/pmc/articles/PMC4396993/>
18. Boone I, Henning K, Hilbert A, Neubauer H, von Kalckreuth V, Dekker DM, et al. Are brucellosis, Q fever and melioidosis potential causes of febrile illness in Madagascar? *Acta Trop*. 2017 Aug 1; 172:255–62. <https://doi.org/10.1016/j.actatropica.2017.05.013> PMID: 28502643
19. Rakotonanahary RJL, Harrison A, Maina AN, Jiang J, Richards AL, Rajerison M, et al. Molecular and serological evidence of flea-associated typhus group and spotted fever group rickettsial infections in Madagascar. *Parasit Vectors* [Internet]. 2017 Mar 4 [cited 2018 Mar 29]; 10. Available from: <https://www.ncbi.nlm.nih.gov/pmc/articles/PMC5336680/>
20. An evaluation of infant growth: the use and interpretation of anthropometry in infants. WHO Working Group on Infant Growth. *Bull World Health Organ*. 1995; 73(2):165–74. PMID: 7743587
21. WHO | WHO surveillance case definitions for ILI and SARI [Internet]. WHO. [cited 2016 Nov 9]. Available from: http://www.who.int/influenza/surveillance_monitoring/ili_sari_surveillance_case_definition/en/
22. WHO | Diarrhoeal disease [Internet]. WHO. [cited 2016 Nov 9]. Available from: <http://www.who.int/mediacentre/factsheets/fs330/en/>
23. Razanajatovo NH, Richard V, Hoffmann J, Reynes J-M, Razafitrimo GM, Randremanana RV, et al. Viral Etiology of Influenza-Like Illnesses in Antananarivo, Madagascar, July 2008 to June 2009. *PLoS ONE* [Internet]. 2011 Mar 3 [cited 2016 Oct 20]; 6(3). Available from: <http://www.ncbi.nlm.nih.gov/pmc/articles/PMC3048401/>
24. Fuehrer H-P, Stadler M-T, Buczolic K, Bloesch I, Noedl H. Two Techniques for Simultaneous Identification of *Plasmodium ovale* curtisi and *Plasmodium ovale* wallikeri by Use of the Small-Subunit rRNA Gene. *J Clin Microbiol*. 2012 Dec; 50(12):4100–2. <https://doi.org/10.1128/JCM.02180-12> PMID: 23015675

25. Snounou G, Viriyakosol S, Zhu XP, Jarra W, Pinheiro L, do Rosario VE, et al. High sensitivity of detection of human malaria parasites by the use of nested polymerase chain reaction. *Mol Biochem Parasitol*. 1993 Oct; 61(2):315–20. PMID: [8264734](#)
26. Venter M, Zaayman D, Niekerk S van, Stivaktas V, Goolab S, Weyer J, et al. Macroarray assay for differential diagnosis of meningoencephalitis in southern Africa. *J Clin Virol*. 2014 May 1; 60(1):50–6. <https://doi.org/10.1016/j.jcv.2014.02.001> PMID: [24630482](#)
27. Merien F, Portnoi D, Bourhy P, Charavay F, Berlioz-Arthaud A, Baranton G. A rapid and quantitative method for the detection of *Leptospira* species in human leptospirosis. *FEMS Microbiol Lett*. 2005 Aug; 249(1):139–47. <https://doi.org/10.1016/j.femsle.2005.06.011> PMID: [16006065](#)
28. Bouyou-Akotet MK, Mawili-Mboumba DP, Kendjo E, Eyang Ekouma A, Abdou Raouf O, Engohang Allogho E, et al. Complicated malaria and other severe febrile illness in a pediatric ward in Libreville, Gabon. *BMC Infect Dis*. 2012 Sep 13; 12:216. <https://doi.org/10.1186/1471-2334-12-216> PMID: [22973831](#)
29. Mayxay M, Sengvilaipaseuth O, Chanthongthip A, Dubot-Pères A, Rolain J-M, Parola P, et al. Causes of Fever in Rural Southern Laos. *Am J Trop Med Hyg*. 2015 Sep 2; 93(3):517–20. <https://doi.org/10.4269/ajtmh.14-0772> PMID: [26149859](#)
30. Rajatonirina S, Razanajatovo NH, Ratsima EH, Orelle A, Ratovoson R, Andrianirina ZZ, et al. Outcome Risk Factors during Respiratory Infections in a Paediatric Ward in Antananarivo, Madagascar 2010–2012. *PLoS ONE* [Internet]. 2013 Sep 12; 8(9). Available from: <https://www.ncbi.nlm.nih.gov/pmc/articles/PMC3771918/>
31. Heikkinen T. Respiratory viruses and children. *J Infect*. 2016 Jul 5; 72:S29–33. <https://doi.org/10.1016/j.jinf.2016.04.019> PMID: [27177731](#)
32. Simoes EAF, Cherian T, Chow J, Shahid-Salles SA, Laxminarayan R, John TJ. Acute Respiratory Infections in Children. In: Jamison DT, Breman JG, Measham AR, Alleyne G, Claeson M, Evans DB, et al., editors. *Disease Control Priorities in Developing Countries* [Internet]. 2nd ed. Washington (DC): World Bank; 2006 [cited 2016 Nov 9]. Available from: <http://www.ncbi.nlm.nih.gov/books/NBK11786/>
33. Madagascar | UNAIDS [Internet]. [cited 2017 Dec 15]. Available from: <http://www.unaids.org/en/regionscountries/countries/madagascar>
34. WHO | Madagascar, Tuberculosis profile [Internet]. [cited 2016 Dec 15]. Available from: https://extranet.who.int/sree/Reports?op=Replet&name=%2FWHO_HQ_Reports%2FG2%2FPROD%2FEXT%2FTBCountryProfile&ISO2=MG&LAN=EN&outtype=html
35. Jansen RR, Wieringa J, Koekkoek SM, Visser CE, Pajkrt D, Molenkamp R, et al. Frequent Detection of Respiratory Viruses without Symptoms: Toward Defining Clinically Relevant Cutoff Values. *J Clin Microbiol*. 2011 Jul; 49(7):2631–6. <https://doi.org/10.1128/JCM.02094-10> PMID: [21543571](#)
36. Pagès F, Kuli B, Moiton M-P, Goarant C, Jaffar-Bandjee M-C. Leptospirosis After a Stay in Madagascar. *J Travel Med*. 2015 Mar 1; 22(2):136–9. <https://doi.org/10.1111/jtm.12163> PMID: [25319525](#)
37. Guarner J, Shieh W-J, Morgan J, Bragg SL, Bajani MD, Tappero JW, et al. Leptospirosis mimicking acute cholecystitis among athletes participating in a triathlon. *Hum Pathol*. 2001 Jul 1; 32(7):750–2. <https://doi.org/10.1053/hupa.2001.25599> PMID: [11486175](#)
38. Peter G, Narasimha H. Acalculous cholecystitis: A rare presentation of leptospirosis progressing to Weil's disease. *Asian Pac J Trop Med*. 2011 Dec 1; 4(12):1007–8. [https://doi.org/10.1016/S1995-7645\(11\)60235-6](https://doi.org/10.1016/S1995-7645(11)60235-6) PMID: [22118040](#)
39. Prabhu M, Nicholson WL, Roche AJ, Kersh GJ, Fitzpatrick KA, Oliver LD, et al. Q Fever, Spotted Fever Group, and Typhus Group Rickettsioses Among Hospitalized Febrile Patients in Northern Tanzania. *Clin Infect Dis Off Publ Infect Dis Soc Am*. 2011 Aug 15; 53(4):e8–15.
40. Andriamandimby SF, Olive M-M, Shimakawa Y, Rakotomanana F, Razanajatovo IM, Andrianarivo-manana TM, et al. Prevalence of chronic hepatitis B virus infection and infrastructure for its diagnosis in Madagascar: implication for the WHO's elimination strategy. *BMC Public Health* [Internet]. 2017 Aug 4; 17. Available from: <https://www.ncbi.nlm.nih.gov/pmc/articles/PMC5544978/>
41. Morvan J, Saluzzo JF, Fontenille D, Rollin PE, Coulanges P. Rift Valley fever on the east coast of Madagascar. *Res Virol*. 1991 Dec; 142(6):475–82. PMID: [1687082](#)
42. Andriamandimby SF, Randrianarivo-Solofoniaina AE, Jeanmaire EM, Ravololomanana L, Razafimanantsoa LT, Rakotojoelinandrasana T, et al. Rift Valley fever during rainy seasons, Madagascar, 2008 and 2009. *Emerg Infect Dis*. 2010 Jun; 16(6):963–70. <https://doi.org/10.3201/eid1606.091266> PMID: [20507747](#)
43. Marks F, Rabehanta N, Baker S, Panzner U, Park SE, Fobil JN, et al. A Way Forward for Healthcare in Madagascar? *Clin Infect Dis*. 2016 Mar 15; 62(suppl 1):S76–9.
44. Pach A, Warren M, Chang I, Im J, Nichols C, Meyer CG, et al. A Qualitative Study Investigating Experiences, Perceptions, and Healthcare System Performance in Relation to the Surveillance of Typhoid Fever in Madagascar. *Clin Infect Dis*. 2016 Mar 15; 62(suppl 1):S69–75.