



DNA Polymerase Sequences of New World Monkey Cytomegaloviruses: Another Molecular Marker with Which To Infer Platyrrhini Systematics

Samantha James, Damien Donato, Jean-Francois Pouliquen, Manuel Ruiz-García, Anne Lavergne, Vincent Lacoste

► To cite this version:

Samantha James, Damien Donato, Jean-Francois Pouliquen, Manuel Ruiz-García, Anne Lavergne, et al.. DNA Polymerase Sequences of New World Monkey Cytomegaloviruses: Another Molecular Marker with Which To Infer Platyrrhini Systematics. *Journal of Virology*, 2018, 92 (18), pp.e00980-18. 10.1128/JVI.00980-18 . pasteur-02197592

HAL Id: pasteur-02197592

<https://riip.hal.science/pasteur-02197592>

Submitted on 3 Apr 2020

HAL is a multi-disciplinary open access archive for the deposit and dissemination of scientific research documents, whether they are published or not. The documents may come from teaching and research institutions in France or abroad, or from public or private research centers.

L'archive ouverte pluridisciplinaire **HAL**, est destinée au dépôt et à la diffusion de documents scientifiques de niveau recherche, publiés ou non, émanant des établissements d'enseignement et de recherche français ou étrangers, des laboratoires publics ou privés.

DNA polymerase sequences of New World monkey cytomegaloviruses: another molecular marker to infer Platyrrhini systematics

Samantha James,^{a,b} Damien Donato,^a Jean-François Pouliquen,^a Manuel Ruiz-García,^c Anne Lavergne,^{a,b} Vincent Lacoste^{a,b,d,#}

^aLaboratoire des Interactions Virus-Hôtes, Institut Pasteur de la Guyane, Cayenne, French Guiana

^bUniversité de la Guyane, Ecole doctorale 587 « Diversités, Santé et Développement en Amazonie », Cayenne, French Guiana

^cLaboratorio de Genética de Poblaciones - Biología Evolutiva, Unidad de Genética, Departamento de Biología, Facultad de Ciencias, Pontificia Universidad Javeriana, Bogotá, DC, Colombia

^dDépartement de Virologie, Institut Pasteur, Paris, France

Running head: New World monkey cytomegaloviruses

Address correspondence to Vincent Lacoste, vincent.lacoste@pasteur.fr

Keywords: *Cytomegalovirus*, CMV, New World monkeys, evolution, phylogeny.

Word counts: Abstract **245 words** Importance **123 words** Main text **4036 words**

Figures: **3** Tables: **4**

ABSTRACT

Over the past few decades, a large number of studies have identified herpesvirus sequences from many mammalian species around the world. Among the different non-human primate species tested so far for cytomegaloviruses, only a few were from the New World. Seeking to identify cytomegalovirus homologues in New World monkeys (NWMs), we carried out molecular screening of 244 blood DNA samples from 20 NWM species from Central and South America. Our aim was to reach a better understanding of their evolutionary processes within the Platyrrhini parvorder. Using polymerase chain reaction amplification with degenerate consensus primers targeting highly conserved amino acid motifs of the herpesvirus *DNA polymerase* gene, we characterized novel viral sequences from 12 species belonging to seven genera representative of the three NWM families. BLAST searches, pairwise nucleotide and amino acid sequence comparisons, as well as phylogenetic analyses confirmed that they all belonged to the *Cytomegalovirus* genus. Previously determined host taxa allowed us to demonstrate a good correlation between the distinct monophyletic clades of viruses with those of the infected primates at the genus level. In addition, the evolutionary branching points that separate NWM CMVs were congruent with the divergence dates of their hosts at the genus level. These results significantly expand our knowledge of the host range of this viral genus and strongly support the co-speciation between these viruses and their hosts. In this respect, we propose that NWM CMV *DNA polymerase* sequences could serve as a reliable molecular marker to infer Platyrrhini phylogenetics.

44 **IMPORTANCE**

45 Investigating evolutionary processes between viruses and non-human primates has led to the
46 discovery of a high number of herpesviruses. No study published so far on primate
47 cytomegaloviruses has extensively studied New World monkeys (NWMs) at the subspecies,
48 species, genus and family levels. The present study sought to identify cytomegalovirus
49 homologues in NWMs and decipher their evolutionary relationships. This led us to characterize
50 novel viruses in 12 of the 20 primate species tested representative of the three NWM families.
51 The identification of distinct viruses in these primates not only significantly expands our
52 knowledge of the host range of this viral genus, but has also shed light on their evolutionary
53 history. Phylogenetic analyses and molecular dating of the sequences obtained support a virus–
54 host coevolution.

INTRODUCTION

New World monkeys of tropical forests from Central to South America belong to the Platyrrhini parvorder (1). They first appeared in the Neotropics in the late Eocene or early Oligocene and have subsequently evolved into a broad diversity of families, subfamilies and genera (**Figure 1**) (2). To shed light on their phylogeny and evolution, NWMs have been extensively studied through morphological, bio-geographical, behavioral and molecular data (2-16). Over the last few decades, contrasting hypotheses have been proposed, presumably due to different markers and the presence of polymorphisms in the features considered. Agreement on the main clades of NWMs has been reached using different approaches, revealing a unique phylogenetic arrangement of Platyrrhini with three monophyletic families: Pitheciidae, Atelidae and Cebidae (**Table 1, Figure 1**) (3, 4, 10, 11, 13-15). Nevertheless, the relationships between them continue to be debated. Through the analysis of intergeneric and intrageneric relationships, intrafamily relationships have also been studied in depth. By incorporating all the available data, major advances have been made and many taxonomic controversies have been clarified (5). Therefore, the Pitheciidae family is composed of *Callicebus*, *Pithecia*, *Chiropotes* and *Cacajao*, the Atelidae family of *Alouatta*, *Ateles*, *Brachyteles* and *Lagothrix* while the Cebidae family is divided into *Cebuella*, *Mico*, *Callithrix*, *Callimico*, *Saguinus*, *Leontopithecus*, *Samiri*, *Cebus*, *Sapajus* and *Aotus* genera. However, relationships between or within some subfamilies and/or genera remain under discussion. Among Cebidae, the phylogenetic position of the Aotinae subfamily remains unclear (14). Indeed, molecular data did not allow determining if Aotinae is a sister clade of Callitrichinae or if, alternatively, Aotinae, Saimiriinae and Cebinae are sisters to Callitrichinae (3, 11, 13-15). Moreover, the number of platyrrhine genera is also still under discussion, such as the division of *Cebus* into the *Sapajus* (tufted capuchins) and *Cebus* (untufted capuchins) genera (3, 16-18). As a result, neither the diversity nor the taxonomy of NWMs are fully known. To

appreciate the details of Platyrrhini's evolution, much work still needs to be done at various taxonomic levels.

Viruses of the genus *Cytomegalovirus* belong to the *Betaherpesvirinae* subfamily within the *Herpesviridae* family, order *Herpesvirales* (19). Eight cytomegaloviruses are recognized as species by the International Committee for Taxonomy of Viruses (ICTV) according to the latest master species list (MSL# 32) released on March 12, 2018 (<https://talk.ictvonline.org/files/master-species-lists/m/msl/7185>). *Human betaherpesvirus 5* (HHV5), commonly referred to in the literature as human cytomegalovirus (HCMV), is the cytomegalovirus (CMV) type species. So far, cytomegaloviruses have been characterized only from primates. Since the initial description of cytomegalovirus in African green monkeys in 1957, whose current species name is *Cercopithecine betaherpesvirus 5* (CeHV5), natural infections by such viruses have been described in several Old World monkey (OWM) species, including baboons, macaques, colobuses, chimpanzees, gorillas and others (20-31). In contrast, cytomegaloviruses of New World monkeys (NWMs) are represented by only three viral entities from *Aotus trivirgatus* (northern owl monkey), *Saimiri sciureus* (common squirrel monkey) and *Cebus* spp. (capuchin) animals, despite the wide diversity of platyrrhines (32-34). It is presumed that all primate species harbor CMVs following a co-speciation process, but data supporting this assumption are scarce. The most extensive analyses of primate CMVs conducted to date are those of Leendertz *et al.* (26) and Anoh *et al.* (30). These studies have demonstrated, through phylogenetic analyses, a species-specific distribution of these viruses. This species specificity indicates a long-term coevolution of CMVs with their natural hosts. The identification of two clades, each composed of chimpanzee and gorilla CMVs, suggests that they have coevolved

following a horizontal transmission event between these great apes millions of years ago (26).
Nevertheless, interspecies transmissions in the wild are rare events (26, 28, 30, 31).

With the exception of the three above-mentioned CMVs of NWMs, there has been little prior organized effort to discover cytomegaloviruses in neotropical primates. The number of NWM species tested to date therefore accounts for only a tiny part of their diversity. We thought that additional investigations on a larger number of species were required. We therefore addressed the possible presence of CMVs in different NWM species from which we previously partially characterized Epstein-Barr-like viruses (35, 36). The purpose was to gain greater insight into the distribution and diversity of CMVs infecting the Platyrrhine primates. Furthermore, based on the coevolution observed between OWMs and their specific CMVs, we wished to determine whether NWM CMV sequences could help decipher evolutionary relationships of their host species (26, 30). Given that multiple molecular markers of mitochondrial and nuclear DNAs are available, host species can be characterized along with their viruses, allowing progress to be made on their respective pattern of diversification. Here, we report finding sequences of cytomegaloviruses in different NWM species and achieve a better understanding of the evolutionary processes between these viruses and their Platyrrhini hosts.

RESULTS

To look for the presence of CMV-like viruses in our collection of NWMs, we attempted to amplify a fragment of the highly conserved herpesvirus *DNA polymerase* gene from the PBMC DNA of each wild-caught primate using the PCR conditions as described previously (27, 35). A total of 244 samples from 20 different species of the three NWM families were tested (**Table 1**). DNA samples from 12 species scored positive after the nested PCRs (nPCRs) (**Table 1**). No

primate belonging to the *Saguinus* and *Lagothrix* genera scored positive. Indeed, no amplification was observed in any samples from the three tamarin species (*Saguinus midas*, *S. labiatus* and *S. oedipus*) and the four woolly monkey subspecies (*Lagothrix lagotricha cana*, *L. l. lagotricha*, *L. l. lugens* and *L. l. poeppigii*). We then used different pairs of consensus-degenerate and specific PCR primers to obtain longer sequences of the *DNA polymerase* gene from each positive animal (**Table 2, Figure 2**). The concatenated nucleotide sequences generated are between 448 and 2,026 bp in size depending on the viral strain (**Table 1**).

BLAST searches demonstrated that all sequences identified belonged to the *Cytomegalovirus* genus and revealed the presence of 12 distinct sequences. Four sequences were identified twice in the *Saimiri boliviensis boliviensis*, *Aotus nancymae*, *Pithecia pithecia* and *Alouatta seniculus* species while the sequence in the *Alouatta macconnelli* was identified in five individuals (**Table 1**). Virus names and abbreviations were given to the 12 distinct viruses (**Table 1**): the viruses were named after the host species (for *Saimiri*, after the subspecies) followed by three upper case letters corresponding to the viral genus (CMV for *Cytomegalovirus*) to which they were then assigned the Arabic numeral 1, as has already been done by us and others (26, 35).

To obtain a full vision of the genetic diversity of these new CMV sequences, pairwise sequence comparisons were made on the 447-bp/149-aa fragments of the *DNA polymerase* gene common to all primate CMVs. All 12 sequences obtained differed from each other at the nucleotide level. Sequences that were identified in different specimens of the same primate species, e.g., AnanCMV1, AsenCMV1, AmacCMV1, SbolCMV1 and PpitCMV1, were 100% identical with the exception of the two PpitCMV1 sequences showing 99.6% nucleotide identity (**Table 3**). For clarity, comparison of the percentage of identity between the different newly

identified NWM CMVs have been reported by grouping viral sequences at the host genus level (Table 3). Overall, the new sequences exhibited among themselves and the other available NWM CMV sequences from 71.1% (AnanCMV1 vs. ApanCMV1) to 99.6% (CalbCMV1 vs. CebHV1 or *Cebus* sp. herpesvirus) nucleotide identity and from 79.6% (CcapCMV1 vs. ApanCMV1 and AnanCMV1 vs. ApalCMV1) to 100% (AmacCMV1 vs. AsenCMV1 as well as SbolCMV1 vs. SalbCMV1) amino acid identity (Table 3). Viruses infecting NWMs of the same genus presented more than 92% of nucleotide and amino acid identities (Table 3). Comparison between CMVs of different NWM genera ranged from 71.1% (*Aotus* CMVs vs. *Ateles* CMVs) to 88.7% (*Sapajus* CMVs vs. *Cebus* CMVs) at the nucleotide level and from 79.6% between *Aotus* and *Alouatta* CMVs and *Cebus* and *Ateles* CMVs to 99.3% between *Sapajus* and *Cebus* CMVs at the amino acid level. NWM CMV sequences exhibited 59.8% (*Cebus* CMVs vs. *Macaca* CMVs) to 72.7% (*Aotus* CMVs vs. *Colobus* CMVs) nucleotide sequence identities and 61.9 to 68.7% amino acid sequence identities with OWM CMVs. The level of nucleotide and amino acid sequence identity with CMVs of Hominidae, except HHV5, ranged from 61 to 72% and from 66 to 72.8%, respectively. Identities with HHV5 ranged from 61.6% (*Alouatta* CMVs) to 70.9% (*Aotus* CMVs) at the nucleotide level and from 66% (*Alouatta* CMVs) to 72.8% (*Aotus* CMVs) at the amino acid level.

All phylogenetic analyses, performed on nucleotide or amino acid sequences between the newly characterized CMV sequences and those of other primate CMVs available in the databases clearly placed the new sequences in a monophyletic lineage of NWM viruses in the *Cytomegalovirus* genus. The phylogenetic analysis presented in Figure 3 is based on amino acid sequences. The NWM CMV lineage diverged from the OWM CMV lineage with a posterior probability value of 1. Remarkably, considering the OWM CMV lineage, the phylogenetic tree

formed two major monophyletic groups consisting of Hominoidea and Cercopithecoidea viruses, respectively. Within the Cercopithecoidea, the *Colobus* CMV sequences are the basal taxa with the formation of additional clades, comprising Asian *Macaca*, *Cercopithecus/Chlorocebus* and *Papio/Mandrillus/Cercocebus* taxa.

Considering NWM CMVs, analyses demonstrated the existence of five distinct lineages supported by high posterior probability values. The phylogenetic relationships between the different NWM CMVs were correlated with the families and genera to which the infected primates belong. The only exception was the hierarchical branching order of the *Aotus/Saimiri/Cebus* genera within the Cebidae, which was not supported. Thus, viruses of *Aotus* (AoHV1, AvocCMV1 and AnanCMV1) all grouped together in a monophyletic clade as did those of *Saimiri* (SaHV4, SscHV, SalbCMV1 and SbolCMV1), *Cebus/Sapajus* (CebHV1, CebusHV, CalbCMV1, CcapCMV1 and SapeCMV1), *Alouatta* (ApalCMV1, AmacCMV1 and AsenCMV1) and *Pithecia* (PpitCMV1). Furthermore, viruses from *Alouatta* species were related to ApanCMV1 from *Ateles* in a monophyletic clade of viruses infecting Atelidae monkeys with a posterior probability of 1, while those of *Saimiri*, *Aotus* and *Cebus/Sapajus* belonged to a monophyletic clade of Cebidae, which was supported by a posterior probability of 0.91.

To explore the cospeciation hypothesis, a time calibration analysis was performed on our data set. Cytomegaloviruses identified in NWMs diverged from those of OWMs at about 32.45 MYA (95% HPD: 17.76–52.33) (**Table 4**). In the New World clade, three major groups were identified corresponding to viruses hosted by (i) Pitheciidae, (ii) Atelidae and (iii) Cebidae. The Pitheciidae viruses diverged from those of the two other groups 22.33 MYA (95% HPD: 16.25–28.21) and intraspecific divergence of PpitCMV1 occurred 1.15 MYA. The divergence between

Atelidae and Cebidae viruses is estimated at 17.16 MYA (95% HPD: 10.29–24.25). Within the group of Atelidae viruses, the divergence between ApanCMV1 identified in *Ateles paniscus* with those identified in *Alouatta* spp. (ApanCMV1, AmacCMV1 and AsenCMV1) is estimated at 8.29 MYA (95% HPD: 2.57–14.82). Viruses identified in the three different *Alouatta* species (*palliata*, *macconnelli* and *seniculus*) diverged at 3.11 MYA (95% HPD: 0.47–6.82) (ApanCMV1 vs. AmacCMV1 /AsenCMV1) while AmacCMV1 diverged from AsenCMV1 1.33 MYA (95% HPD: 0.02–3.45). Within the Cebidae group, the divergence between viruses of Aotinae, Cebinae and Saimiriinae occurred around 11.54 MYA (95% HPD: 5.82–17.89). Within the group of cytomegaloviruses hosted by the different *Aotus* species, AoHV1 identified in *A. trivirgatus* diverged from the others about 3.98 MYA (95% HPD: 0.8–8.25) while AnanCMV1 diverged from AvocCMV1 2.15 MYA (95% HPD: 0.2–4.88). Within the group of viruses identified in the Cebinae, CcapCMV1 from *C. capucinus* diverged from the others 3.26 MYA (95% HPD: 0.59–6.94). SapCMV1 identified in *Sapajus apella* diverged from the other viruses detected in *Cebus* (*albifrons* and *Cebus* sp.) 2.09 MYA (0.32–4.68). Finally, within the group of viruses identified in the *Saimiri* genus, SsciCMV1/SaHV4 detected in *S. sciureus* diverged from those hosted by *S. boliviensis* and *S. albigena*, SbolCMV1 and SalbCMV1, 2.68 MYA (95% HPD: 0.28–6.14).

DISCUSSION

This study is the largest conducted to date to molecularly characterize CMVs in NWMs in terms of species diversity. It has partially characterized 12 cytomegaloviruses from 12 distinct species belonging to seven genera and three NWM families. BLAST searches of the *Cytomegalovirus* sequences identified further revealed that all but one were new viral sequences close to, but distinct from, already published CMV sequences from *Aotus trivirgatus*, *Saimiri sciureus* and *Cebus* sp. The only exception was the viral sequence from *C. albifrons* showing 99.6% identity at

the nucleotide level to CebusHV (AF292067) and CebHV1 (JQ264772), both identified from unspecified *Cebus* spp. These three viral sequences were therefore considered to correspond to the same viral species. In addition, the newly identified viral sequences are completely host-specific, with no identification of cross-species transmission in our sample. Observations on sequence comparisons, phylogenetic analysis and host-specificity of the sequences reported in this paper are close to species demarcation criteria outlined in the 9th ICTV report for formal recognition of new herpesvirus species (https://talk.ictvonline.org/ictv-reports/ictv_9th_report/) (37).

By refining the degeneracy of the PCR primers used to screen the sample collection, we were able to specifically target and identify CMV sequences, even though some of the primates tested were coinfecting with lymphocryptoviruses (35). Indeed, we formerly identified 17 EBV-related viruses from 15 NWM species belonging to seven genera and three families from the same collection of samples (35, 36). These new combinations of screening primers are therefore good molecular tools to be used for future studies. Nevertheless, on the 20 NWM species tested, we did not characterize any CMV sequence from our collection of *Saguinus* spp. and *Lagothrix* spp. samples. Considering the relatively small sampling size of most species belonging to these two genera, with the exception of *Saguinus midas*, it is conceivable that we missed a CMV-like virus from them. Nevertheless, for the other primate species tested, the sampling size was equivalent or even smaller and we identified CMV sequences for almost all of them. More strikingly, despite the large sample size of *Saguinus midas* screened (54 individuals) and the different PCR approaches used (different combinations of primers with different levels of degeneracy and PCR cycling conditions), no PCR product was identified. The negativity of the *Saguinus* and *Lagothrix* genera for CMV-related viruses can be explained by a lack of primer

matching or by a loss of CMV viruses during evolution within these genera. Likewise, in our former studies of EBV-related sequences, we were unsuccessful in amplifying EBV sequences from individuals of the *Aotus* and *Alouatta* genera (35, 36). Taken together, these results highlight the need for more in-depth analyses of a representative sample from these and other species of these genera to clarify this point. Moreover, for part of the positive samples, we were unsuccessful in generating longer sequences of the *DNA polymerase* gene. Whether this is due to the low quality/low amount of the remaining DNA, a low viral load, or reflects technical difficulties, *i.e.* an inadequate level of degeneracy of the primers designed for some of these viruses, is not clear. Nonetheless, sequence data generated here were sufficient to gain insight on their genetic relationships.

Pairwise nucleotide and amino acid sequence comparisons demonstrated that the viral sequences analyzed present different levels of genetic diversity among them (**Table 3**); the smallest divergences were detected when viral sequences from primates belonging to the same genus were analyzed. Phylogenetic analyses showed that CMV sequences are grouped according to the primate genus from which they were detected. Thereafter, the phylogenetic clustering and diversification follow those proposed for NWM species, corroborating the hypothesis of joint evolution of the viruses with the speciation of their hosts (3, 5). Comparatively, analyses of NWM EBV sequences have fallen short of achieving a completely resolved phylogeny (35). While a clear co-speciation can be seen in the terminal branchings within major lineages according to the primate subfamilies, the phylogenetic relationships between them are not concordant with the current interpretations of their hosts' pattern of diversification at the family level. In addition, for OWMs, there is a similar incongruence between the *Lymphocryptovirus* phylogeny and that of the corresponding host lineages (38, 39). One can therefore argue that,

within the *Herpesviridae* family, *DNA polymerase* sequences from viruses of the *Cytomegalovirus* genus are a better molecular marker than those of the *Lymphocryptovirus* genus to test hypotheses of herpesvirus/primate co-evolution. On the basis of the available data, our analysis nevertheless has two limitations regarding viruses of Cebidae that do not perfectly reflect current interpretations of their hosts' diversification pattern. While viral sequences of Cebidae segregate into three well-supported clades, each corresponding to the host genus from which they have been identified, *i.e.* *Cebus/Sapajus*, *Saimiri* and *Aotus*, the relationships between the three clades are not phylogenetically supported (**Figure 3**). The second limitation concerns SapeCMV1, identified from *Sapajus apella*, which, phylogenetically, falls within the group of *Cebus* viruses (**Figure 3**). Nevertheless, pairwise sequence comparison of SapeCMV1 with the viral sequences identified from *Cebus* spp. shows that the nucleotide divergence of SapeCMV1 is over the maximum 8% observed for viral sequences identified from NWM species of the same genus (**Table 3**). These combined results (on SapeCMV1 and the other *Cebus* viruses) do not, for the moment, make it possible to confidently separate the *Cebus* genus into two genera as observed on analyses of *Alu* elements and on phylogenomics (3, 17). However, our virus results agree quite well with the mitogenomics findings obtained in recent studies, where *Sapajus* is a taxon within *Cebus* (18). These limits should be resolved by screening an extensive taxon sampling of the different *Sapajus* spp. as well as of Callithrichinae for the presence of cytomegaloviruses.

Finally, these data support virus–host coevolution in terms of branching order as well as divergence time. Indeed, for each NWM genus tested, the estimated timing of diversification of viruses is in agreement with host sequence divergence date estimates from previously published studies (**Table 4**) (3, 10, 15). Nevertheless, dates obtained at superior taxonomic levels are more

recent than those based on different types of data sets or models. These discrepancies can be attributed to the fact that a majority of NWM taxa remain to be tested and that no CMV sequence is available for numerous genera. This therefore limits the significance of our estimates for the major primate lineages for the moment and emphasizes the need for further studies.

Here, we conclusively expand our knowledge of the viral diversity, distribution and evolutionary relationships of NWM CMVs. Even if the evolutionary history of these viruses is not fully resolved, and in spite of the limitations mentioned above, these results strongly support the co-evolution hypothesis of these new viruses with their hosts. In light of these data, we propose that CMV *DNA polymerase* sequences could serve as a genetic marker to define the evolutionary links of their host species. Indeed, despite the number of studies conducted over the past few decades and the fast-growing number of host DNA sequence data sets, an unifying consensus of the evolutionary hierarchy of NWMs has not been fully reached, partly because not all phylogenies from these data sets agree but also due to a large proportion of missing data for some taxa (2-15). The search for and identification of CMV *DNA polymerase* sequences therefore seems to be an alternative to help solve this issue. Given the high prevalence rate of CMVs in wild primates, their spread through close contact with infectious bodily fluids and their persistence for the lifelong of the host, cytomegalovirus sequences, if present, should be easily obtained through our PCR approach (20, 21, 40-42). Considering the number of all presently known NWM species, we only tested here a fraction of their diversity. This suggests that a great number of cytomegaloviruses remains to be identified in this important group of primates. These results argue for a wider and more systematic sampling and exploration of NWMs to evaluate the presence of CMVs and to confirm the usefulness of those sequences as a new molecular tool to infer the systematics of Platyrrhini.

MATERIALS AND METHODS

Sample collection. The collection of blood DNA samples has been described in detail elsewhere (**Table 1**) (35, 36, 43-45). In brief, we tested a total of 244 DNA samples from 20 NWM species (26 subspecies) belonging to the three families and to six of the seven subfamilies according to Schneider and Sampaio (5). All samples were previously genetically identified by phylogenetic analysis of mtDNA genes, including cytochrome *c* oxydase subunit I (*COXI*) and/or cytochrome *b* (*CytB*) (35).

Initial screening of samples. Molecular screening was done by semi-nested polymerase chain reaction amplification with degenerate consensus primers targeting highly conserved amino acid (aa) motifs of the herpesvirus *DNA polymerase* gene (**Table 2**). To maximize the chances of amplifying CMV-like sequences, the primers of Rose *et al.* were refined from the alignment of all primate cytomegalovirus DNA polymerase sequences available in the databases (**Table 2**) (46). CMV3F1, CMV3F2 and CMV3R1 primers were designed and used in place of QAHNA, VYGA and GDTD1B, respectively, while the sense primer DFASA was kept as it was. Two different combinations of primers (DFASA/ CMV3R1 or CMV3F1/ CMV3R1) were used on each DNA sample in separate reactions for the first-round PCR (**Figure 2**). In the second-round PCR, CMV3F2/CMV3R1 primers were used. PCR analyses were performed at an annealing temperature of 60°C, with an elongation time of 30 s, for 35 cycles. All amplicons of approximately the expected size were purified, cloned by TA cloning and sent for sequencing to Genewiz®, Takeley, UK (<https://www.genewiz.com/>).

Partial *DNA polymerase* gene amplification. To obtain the nucleotide sequence upstream of the CMV3F2 motif, a degenerate primer (CMV3R2) was derived from the complementary sequences of the small fragments and used in an nPCR amplification with the DFASA or CMV3F1 primer pools using the initial PCR products as templates (**Table 2, Figure 2**). Then, to generate longer segments of the *DNA polymerase* gene for each newly identified virus, we tried to obtain upstream and downstream sequences using different sets of consensus degenerate and species-specific primers designed using the primate CMV DNA polymerase sequence alignment (**Table 2, Figure 2**). Overlapping amplicons were generated, cloned and sequenced as described above. Each sequence corresponds to at least three independent clones sequenced on both strands. Contig sequences were then assembled using MEGA 5.05 software (47).

Phylogenetic analysis. Raw sequences were analyzed and edited in MEGA 5.05 (47). Sequences were confirmed as CMV by homology analysis using the NCBI BLAST search tool (48). Then multiple sequence alignments were constructed using ClustalW with all other previously published primate CMV sequences and alignments were checked manually. Sequences were translated into amino acids and both nucleotide and amino acid sequences were checked for irregularities. Hypervariable regions were removed before performing analyses. Sequence identity was calculated using uncorrected p-distances. Phylogenetic trees were inferred from the aligned amino acid sequences. The JTT + G model was selected as the best-fitted model of amino acid evolution under corrected Akaike information criteria (AICc) using MEGA 5.05 and used for the Bayesian approach (49), which was performed with Mr. Bayes 3.2.2 to infer phylogenetic relationships (50). Markov Chain Monte Carlo (MCMC) simulations were run for 10,000,000 generations, with four simultaneous chains, using a sample frequency of 500 and a burn-in of 25,000. Majority rule consensus trees were obtained from the output. Validation of the

inference was assessed based on the standard deviation of split frequencies, which was less than the expected threshold value of 0.01 (calculated value of 0.002).

Time calibration. Divergence times between clades were calculated using a relaxed Bayesian molecular clock model with an uncorrelated lognormal rate of distribution, as implemented in BEAST version 1.7.4 (51). A monophyletic constraint was imposed for the nodes used to calibrate evolutionary rates. Two calibration points were applied as normal prior to constraining the age of the Platyrrhini and Homo-Pan clades, the time of the most recent common ancestor (tMRCA) of Platyrrhini to 23.5 MYA (stdev = 3.0) and for Homo-Pan to 6.5 MYA (stdev = 0.8) (52-54). These calibration points are based on the fossil date (55). The amino acid substitution model was the same as the one described above. A Yule process of speciation was used as the tree prior. Results were obtained for 10,000,000 generations with the first 2,500,000 discarded as burn-in and parameter values sampled every 100 generations. The effective sample size for parameter estimates and convergence were checked using Tracer version 1.5.0 software (56). The final tree with divergence estimates and their 95% highest posterior densities was computed in TreeAnnotator v1.4.5 (51).

Accession numbers. The sequences reported in this paper have been deposited in the GenBank database under accession numbers **KU963225** to **KU963240**.

ACKNOWLEDGMENTS

Warm thanks go to Benoît de Thoisy for providing NWM DNA samples from French Guiana. S.J. was supported by a grant from the Université de la Guyane, Ecole doctorale “Diversités, Santé et Développement en Amazonie” and by a grant from the Collectivité Territoriale de la Guyane. This study was funded by a European commission "REGPOT-CT-2011-285837-STRonGer" grant within the FP7 and an "Investissement d'Avenir" grant managed by the Agence Nationale de la Recherche (CEBA, Ref. ANR-10-LABX-25-01). It was also supported by grant numbers 1203-09-11239 (Colciencias) and 120108-E0102141 (Fondo para la Acción Ambiental) to M.R-G. The funders had no role in study design, data collection and interpretation, or the decision to submit the work for publication.

COMPETING INTERESTS

The authors declare that they have no competing financial interests.

AUTHORS' CONTRIBUTION

A.L., M.R-G. and V.L. contributed to the study design. M.R-G. collected some of the samples. S.J., D.D., J.-F.P., A.L. and V.L. performed the molecular and genetic analyses. S.J., A.L. and V.L. analyzed the data and wrote the article. All authors participated in its final writing and editing.

ETHICAL APPROVAL

Study based on samples collected several years earlier. Biological material from French Guiana was collected in 1994–1995 along the Sinnamary River, Petit Saut Hydroelectric dam, under the supervision of veterinarians of “Faune Sauvage” team led by Jean-Christophe Vié (57). Blood

409 sampling from live animals was carried out in accordance with French animal care regulations
410 and the laws of France. The other samples were collected directly from animals killed, in the
411 field, by indigenous hunters for their own purposes, with the full consent of the hunters and in
412 accordance with the laws of Brazil, Colombia, Mexico, Peru, Guatemala and Argentina.

REFERENCES

1. Groves CP. 2005. Order Primates, p 111-184. *In* Wilson DE, Reeder DM (ed), *Mammal species of the World: a taxonomic and geographic reference*, Third ed, vol 2. The Johns Hopkins University Press, Baltimore, MD.
2. Rylands AB, Mittermeier RA. 2009. The diversity of the New World Primates (Platyrrhini): an annotated taxonomy., p 23 - 54. *In* Garber PA, Estrada A, Bicca-Marques JC, Heymann EW, Stier KB (ed), *South American Primates - Comparative Perspectives in the Study of Behavior, Ecology, and Conservation* doi:10.1007/978-0-387-78705-3. Springer-Verlag New York, New York.
3. Perelman P, Johnson WE, Roos C, Seuanetz HN, Horvath JE, Moreira MA, Kessing B, Pontius J, Roelke M, Rumpler Y, Schneider MP, Silva A, O'Brien SJ, Pecon-Slattery J. 2011. A molecular phylogeny of living primates. *PLoS Genet* 7:e1001342.
4. Schneider H, Canavez FC, Sampaio I, Moreira MA, Tagliaro CH, Seuanetz HN. 2001. Can molecular data place each neotropical monkey in its own branch? *Chromosoma* 109:515-23.
5. Schneider H, Sampaio I. 2015. The systematics and evolution of New World primates - A review. *Mol Phylogenet Evol* 82 Pt B:348-57.
6. Schneider H, Sampaio I, Harada ML, Barroso CM, Schneider MP, Czelusniak J, Goodman M. 1996. Molecular phylogeny of the New World monkeys (Platyrrhini, primates) based on two unlinked nuclear genes: IRBP intron 1 and epsilon-globin sequences. *Am J Phys Anthropol* 100:153-79.
7. Schneider H, Schneider MP, Sampaio I, Harada ML, Stanhope M, Czelusniak J, Goodman M. 1993. Molecular phylogeny of the New World monkeys (Platyrrhini, primates). *Mol Phylogenet Evol* 2:225-42.

8. Rylands AB, Mittermeier RA, Silva Jr. JS. 2012. Neotropical primates: taxonomy and recently described species and subspecies. *Int Zoo Yearb* 46:11-24.
9. Rylands AB, Schneider H, Langguth A, Mittermeier RA, Groves CP, Rodrigues-Luna E. 2000. An assessment of the diversity of new World primates. *Neotrop Primates* 8:61-93.
10. Opazo JC, Wildman DE, Prychitko T, Johnson RM, Goodman M. 2006. Phylogenetic relationships and divergence times among New World monkeys (Platyrrhini, Primates). *Mol Phylogenet Evol* 40:274-80.
11. Wildman DE, Jameson NM, Opazo JC, Yi SV. 2009. A fully resolved genus level phylogeny of neotropical primates (Platyrrhini). *Mol Phylogenet Evol* 53:694-702.
12. Singer SS, Schmitz J, Schwiegk C, Zischler H. 2003. Molecular cladistic markers in New World monkey phylogeny (Platyrrhini, Primates). *Mol Phylogenet Evol* 26:490-501.
13. Ray DA, Xing J, Hedges DJ, Hall MA, Laborde ME, Anders BA, White BR, Stoilova N, Fowlkes JD, Landry KE, Chemnick LG, Ryder OA, Batzer MA. 2005. Alu insertion loci and platyrrhine primate phylogeny. *Mol Phylogenet Evol* 35:117-26.
14. Osterholz M, Walter L, Roos C. 2009. Retropositional events consolidate the branching order among New World monkey genera. *Mol Phylogenet Evol* 50:507-13.
15. Jameson Kiesling NM, Yi SV, Xu K, Gianluca Sperone F, Wildman DE. 2015. The tempo and mode of New World monkey evolution and biogeography in the context of phylogenomic analysis. *Mol Phylogenet Evol* 82 Pt B:386-99.
16. Alfaro JW, Silva JD, Jr., Rylands AB. 2012. How different are robust and gracile capuchin monkeys? An argument for the use of *sapajus* and *cebus*. *Am J Primatol* 74:273-86.
17. Martins AM, Jr., Amorim N, Carneiro JC, de Mello Affonso PR, Sampaio I, Schneider H. 2015. Alu elements and the phylogeny of capuchin (*Cebus* and *Sapajus*) monkeys. *Am J Primatol* 77:368-75.

18. Ruiz-Garcia M, Castillo MI, Luengas-Villamil K. 2016. It is misleading to use *Sapajus* (robust capuchins) as a genus? : A review of the evolution of the capuchins and suggestions on their systematics, p 209-268. *In* Ruiz-Garcia M, Shostell JM (ed), Molecular population genetics, evolutionary biology and biological conservation of the Neotropical Primates. Nova Science Publisher, Inc., New York, USA.
19. Davison AJ, Eberle R, Ehlers B, Hayward GS, McGeoch DJ, Minson AC, Pellett PE, Roizman B, Studdert MJ, Thiry E. 2009. The order Herpesvirales. *Arch Virol* 154:171-7.
20. Blewett EL, White G, Saliki JT, Eberle R. 2001. Isolation and characterization of an endogenous cytomegalovirus (BaCMV) from baboons. *Arch Virol* 146:1723-38.
21. Blewett EL, Lewis J, Gadsby EL, Neubauer SR, Eberle R. 2003. Isolation of cytomegalovirus and foamy virus from the drill monkey (*Mandrillus leucophaeus*) and prevalence of antibodies to these viruses amongst wild-born and captive-bred individuals. *Arch Virol* 148:423-33.
22. Asher DM, Gibbs CJ, Jr., Lang DJ, Gajdusek DC, Chanock RM. 1974. Persistent shedding of cytomegalovirus in the urine of healthy Rhesus monkeys. *Proc Soc Exp Biol Med* 145:794-801.
23. Malherbe H, Harwin R. 1957. Seven viruses isolated from the vervet monkey. *Br J Exp Pathol* 38:539-41.
24. Black PH, Hartley JW, Rowe WP. 1963. Isolation of a cytomegalovirus from African green monkey. *Proc Soc Exp Biol Med* 112:601-5.
25. Wroblewska Z, Gilden D, Devlin M, Huang ES, Rorke LB, Hamada T, Furukawa T, Cummins L, Kalter S, Koprowski H. 1979. Cytomegalovirus isolation from a chimpanzee with acute demyelinating disease after inoculation of multiple sclerosis brain cells. *Infect Immun* 25:1008-15.

- 485 26. Leendertz FH, Deckers M, Schempp W, Lankester F, Boesch C, Mugisha L, Dolan A,
486 Gatherer D, McGeoch DJ, Ehlers B. 2009. Novel cytomegaloviruses in free-ranging and
487 captive great apes: phylogenetic evidence for bidirectional horizontal transmission. *J Gen*
488 *Virol* 90:2386-94.
- 489 27. Lacoste V, Mauchere P, Dubreuil G, Lewis J, Georges-Courbot MC, Rigoulet J, Petit T,
490 Gessain A. 2000. Simian homologues of human gamma-2 and betaherpesviruses in
491 mandrill and drill monkeys. *J Virol* 74:11993-9.
- 492 28. Murthy S, Couacy-Hymann E, Metzger S, Nowak K, De Nys H, Boesch C, Wittig R, Jarvis
493 MA, Leendertz FH, Ehlers B. 2013. Absence of frequent herpesvirus transmission in a
494 nonhuman primate predator-prey system in the wild. *J Virol* 87:10651-9.
- 495 29. Prepens S, Kreuzer KA, Leendertz F, Nitsche A, Ehlers B. 2007. Discovery of
496 herpesviruses in multi-infected primates using locked nucleic acids (LNA) and a bigenic
497 PCR approach. *Virol J* 4:84.
- 498 30. Anoh AE, Murthy S, Akoua-Koffi C, Couacy-Hymann E, Leendertz FH, Calvignac-
499 Spencer S, Ehlers B. 2017. Cytomegaloviruses in a Community of Wild Nonhuman
500 Primates in Tai National Park, Cote D'Ivoire. *Viruses* 10.
- 501 31. Seimon TA, Olson SH, Lee KJ, Rosen G, Ondzie A, Cameron K, Reed P, Anthony SJ, Joly
502 DO, Karesh WB, McAloose D, Lipkin WI. 2015. Adenovirus and herpesvirus diversity in
503 free-ranging great apes in the Sangha region of the Republic Of Congo. *PLoS One*
504 10:e0118543.
- 505 32. Daniel MD, Melendez LV, King NW, Barahona HH, Fraser CE, Garcia FG, Silva D. 1973.
506 Isolation and characterization of a new virus from owl monkeys: herpesvirus aotus type 3.
507 *Am J Phys Anthropol* 38:497-500.

- 508 33. Daniel MD, Melendez LV, King NW, Fraser CE, Barahona HH, Hunt RD, Garcia FG,
509 Trum BF. 1971. Herpes virus aotus: a latent herpesvirus from owl monkeys (*Aotus*
510 *trivirgatus*) isolation and characterization. *Proc Soc Exp Biol Med* 138:835-45.
- 511 34. Rangan SR, Chaiban J. 1980. Isolation and characterization of a cytomegalovirus from the
512 salivary gland of a squirrel monkey (*Saimiri sciureus*). *Lab Anim Sci* 30:532-40.
- 513 35. Lavergne A, de Thoisy B, Pouliquen JF, Ruiz-Garcia M, Lacoste V. 2011. Partial
514 molecular characterisation of New World non-human primate lymphocryptoviruses. *Infect*
515 *Genet Evol* 11:1782-9.
- 516 36. de Thoisy B, Pouliquen JF, Lacoste V, Gessain A, Kazanji M. 2003. Novel gamma-1
517 herpesviruses identified in free-ranging new world monkeys (golden-handed tamarin
518 [*Saguinus midas*], squirrel monkey [*Saimiri sciureus*], and white-faced saki [*Pithecia*
519 *pithecia*]) in French Guiana. *J Virol* 77:9099-105.
- 520 37. Pellett PE, Davison AJ, Eberle R, B. E, Hayward GS, Lacoste V, Minson AC, Nicholas J,
521 Roizman B, Studdert MJ, Wang F. 2011. Order *Herpesvirales*, p 99-107. *In* King AMQ,
522 Adams MJ, Carstens EB, Lefkowitz EJ (ed), *Virus Taxonomy: Ninth report of the*
523 *International Committee on Taxonomy of Viruses*. Elsevier Inc., Oxford, United Kingdom.
- 524 38. Ehlers B, Ochs A, Leendertz F, Goltz M, Boesch C, Matz-Rensing K. 2003. Novel simian
525 homologues of Epstein-Barr virus. *J Virol* 77:10695-9.
- 526 39. Ehlers B, Spiess K, Leendertz F, Peeters M, Boesch C, Gatherer D, McGeoch DJ. 2010.
527 Lymphocryptovirus phylogeny and the origins of Epstein-Barr virus. *J Gen Virol* 91:630-
528 42.
- 529 40. Mocarski ES, Shenk T, Griffiths PD, Pass RF. 2013. Cytomegaloviruses, p 1960 - 2014. *In*
530 Knipe DM, Howley PM (ed), *Field's Virology*, vol 2. Lippincott Williams & Wilkins,
531 Philadelphia.

- 532 41. Cannon MJ, Hyde TB, Schmid DS. 2011. Review of cytomegalovirus shedding in bodily
533 fluids and relevance to congenital cytomegalovirus infection. *Rev Med Virol* 21:240-55.
- 534 42. Reeves M, Sinclair J. 2008. Aspects of human cytomegalovirus latency and reactivation.
535 *Curr Top Microbiol Immunol* 325:297-313.
- 536 43. de Thoisy B, Vogel I, Reynes JM, Pouliquen JF, Carme B, Kazanji M, Vie JC. 2001.
537 Health evaluation of translocated free-ranging primates in French Guiana. *Am J Primatol*
538 54:1-16.
- 539 44. Ruiz-Garcia M, Castillo MI, Vasquez C, Rodriguez K, Pinedo-Castro M, Shostell J,
540 Leguizamon N. 2010. Molecular phylogenetics and phylogeography of the white-fronted
541 capuchin (*Cebus albifrons*; Cebidae, Primates) by means of mtCOII gene sequences. *Mol*
542 *Phylogenet Evol* 57:1049-61.
- 543 45. Ruiz-Garcia M, Pinedo-Castro MO. 2010. Molecular systematics and phylogeography of
544 the genus *Lagothrix* (Atelidae, Primates) by means of the mitochondrial COII gene. *Folia*
545 *Primatol (Basel)* 81:109-28.
- 546 46. Rose TM, Strand KB, Schultz ER, Schaefer G, Rankin GW, Jr., Thouless ME, Tsai CC,
547 Bosch ML. 1997. Identification of two homologs of the Kaposi's sarcoma-associated
548 herpesvirus (human herpesvirus 8) in retroperitoneal fibromatosis of different macaque
549 species. *J Virol* 71:4138-44.
- 550 47. Tamura K, Peterson D, Peterson N, Stecher G, Nei M, Kumar S. 2011. MEGA5: molecular
551 evolutionary genetics analysis using maximum likelihood, evolutionary distance, and
552 maximum parsimony methods. *Mol Biol Evol* 28:2731-9.
- 553 48. Johnson M, Zaretskaya I, Raytselis Y, Merezuk Y, McGinnis S, Madden TL. 2008. NCBI
554 BLAST: a better web interface. *Nucleic Acids Res* 36:W5-9.

- 555 49. Darriba D, Taboada GL, Doallo R, Posada D. 2011. ProtTest 3: fast selection of best-fit
556 models of protein evolution. *Bioinformatics* 27:1164-5.
- 557 50. Ronquist F, Teslenko M, van der Mark P, Ayres DL, Darling A, Hohna S, Larget B, Liu L,
558 Suchard MA, Huelsenbeck JP. 2012. MrBayes 3.2: efficient Bayesian phylogenetic
559 inference and model choice across a large model space. *Syst Biol* 61:539-42.
- 560 51. Drummond AJ, Suchard MA, Xie D, Rambaut A. 2012. Bayesian phylogenetics with
561 BEAUti and the BEAST 1.7. *Mol Biol Evol* 29:1969-73.
- 562 52. Poux C, Douzery EJ. 2004. Primate phylogeny, evolutionary rate variations, and divergence
563 times: a contribution from the nuclear gene IRBP. *Am J Phys Anthropol* 124:1-16.
- 564 53. Kay RF, Fleagle JG, Mitchell TR, Colbert M, Bown T, Powers DW. 2008. The anatomy of
565 *Dolichocebus gaimanensis*, a stem platyrrhine monkey from Argentina. *J Hum Evol*
566 54:323-82.
- 567 54. Vignaud P, Durringer P, Mackaye HT, Likius A, Blondel C, Boissarie JR, De Bonis L,
568 Eisenmann V, Etienne ME, Geraads D, Guy F, Lehmann T, Lihoreau F, Lopez-Martinez N,
569 Mourer-Chauvire C, Otero O, Rage JC, Schuster M, Viriot L, Zazzo A, Brunet M. 2002.
570 Geology and palaeontology of the Upper Miocene Toros-Menalla hominid locality, Chad.
571 *Nature* 418:152-5.
- 572 55. Tavaré S, Marshall CR, Will O, Soligo C, Martin RD. 2002. Using the fossil record to
573 estimate the age of the last common ancestor of extant primates. *Nature* 416:726-9.
- 574 56. Rambaut A, Drummond AJ. 2009. Tracer. Version 1.5.0.
- 575 57. Vie JC. 1999. Wildlife rescues - The case of the Petit Saut hydroelectric dam in French
576 Guiana. *Oryx* 33:115-126.

58. Blewett EL, Sherrod CJ, Texier JR, Conrad TM, Dittmer DP. 2015. Complete Genome Sequences of *Mandrillus leucophaeus* and *Papio ursinus* Cytomegaloviruses. *Genome Announc* 3.
59. Johnson G, Dick D, Ayers M, Petric M, Tellier R. 2003. Detection and species-level identification of primate herpesviruses with a comprehensive PCR test for human herpesviruses. *J Clin Microbiol* 41:1256-8.
60. Marsh AK, Willer DO, Ambagala AP, Dzamba M, Chan JK, Pilon R, Fournier J, Sandstrom P, Brudno M, MacDonald KS. 2011. Genomic sequencing and characterization of cynomolgus macaque cytomegalovirus. *J Virol* 85:12995-3009.
61. Russell JN, Marsh AK, Willer DO, Ambagala AP, Dzamba M, Chan JK, Pilon R, Fournier J, Brudno M, Antony JM, Sandstrom P, Evans BJ, MacDonald KS. 2016. A novel strain of cynomolgus macaque cytomegalovirus: implications for host-virus co-evolution. *BMC Genomics* 17:277.
62. Swanson R, Bergquam E, Wong SW. 1998. Characterization of rhesus cytomegalovirus genes associated with anti-viral susceptibility. *Virology* 240:338-48.
63. Rivailler P, Kaur A, Johnson RP, Wang F. 2006. Genomic sequence of rhesus cytomegalovirus 180.92: insights into the coding potential of rhesus cytomegalovirus. *J Virol* 80:4179-82.
64. Kouzarides T, Bankier AT, Satchwell SC, Weston K, Tomlinson P, Barrell BG. 1987. Sequence and transcription analysis of the human cytomegalovirus DNA polymerase gene. *J Virol* 61:125-33.
65. Davison AJ, Dolan A, Akter P, Addison C, Dargan DJ, Alcendor DJ, McGeoch DJ, Hayward GS. 2003. The human cytomegalovirus genome revisited: comparison with the chimpanzee cytomegalovirus genome. *J Gen Virol* 84:17-28.

- 601 66. Dunn W, Chou C, Li H, Hai R, Patterson D, Stolc V, Zhu H, Liu F. 2003. Functional
602 profiling of a human cytomegalovirus genome. *Proc Natl Acad Sci U S A* 100:14223-8.
- 603 67. Murphy E, Yu D, Grimwood J, Schmutz J, Dickson M, Jarvis MA, Hahn G, Nelson JA,
604 Myers RM, Shenk TE. 2003. Coding potential of laboratory and clinical strains of human
605 cytomegalovirus. *Proc Natl Acad Sci U S A* 100:14976-81.
- 606

FIGURE LEGEND

FIG.1. Diagram representation of Plathyrrhini taxa in descending order down to genus level. Adapted from Perelman et al. (3). Black and gray boxes represent NWM genera tested for CMVs. Black boxes correspond to NWM genera from which CMV sequences have been characterized while gray boxes represent NWM genera from which no CMV sequence has been obtained in the present study.

FIG. 2. Relative position and orientation of the PCR primers used. The different combinations of primers used in nested or semi-nested PCRs are represented above the Herpesviral *DNA polymerase* gene sequence in different grey boxes. Primers XxxR1 and XxxR2, represented by dotted arrows, correspond to the different antisense specific primers used in a degenerate (CMV2F1 or CMV2F2) - nondegenerate nPCR assay (see **Table 2**). Bars below the sequence represent the different nested PCR products expected. The pairs of primers on the left-hand side of the bars indicate those used for the first-round PCR, while those on the right-hand side correspond to the one used in the nested PCR reactions. The sequences of the oligonucleotide primers are given in **Table 2**.

FIG. 3. Phylogenetic analysis of primate cytomegalovirus sequences. The phylogenetic tree was derived from the partial amino acid sequences of the *DNA polymerase* gene (149 aa) of 50 representatives of primate cytomegaloviruses using the Bayesian method with the JTT + G model of amino acid evolution. Sequences generated in this study are in boldface. Posterior probabilities of the Bayesian analysis (>0.9) are shown next to each node. The scale bar indicates amino acid substitutions per site. The major clades representing Old World and New World primate families,

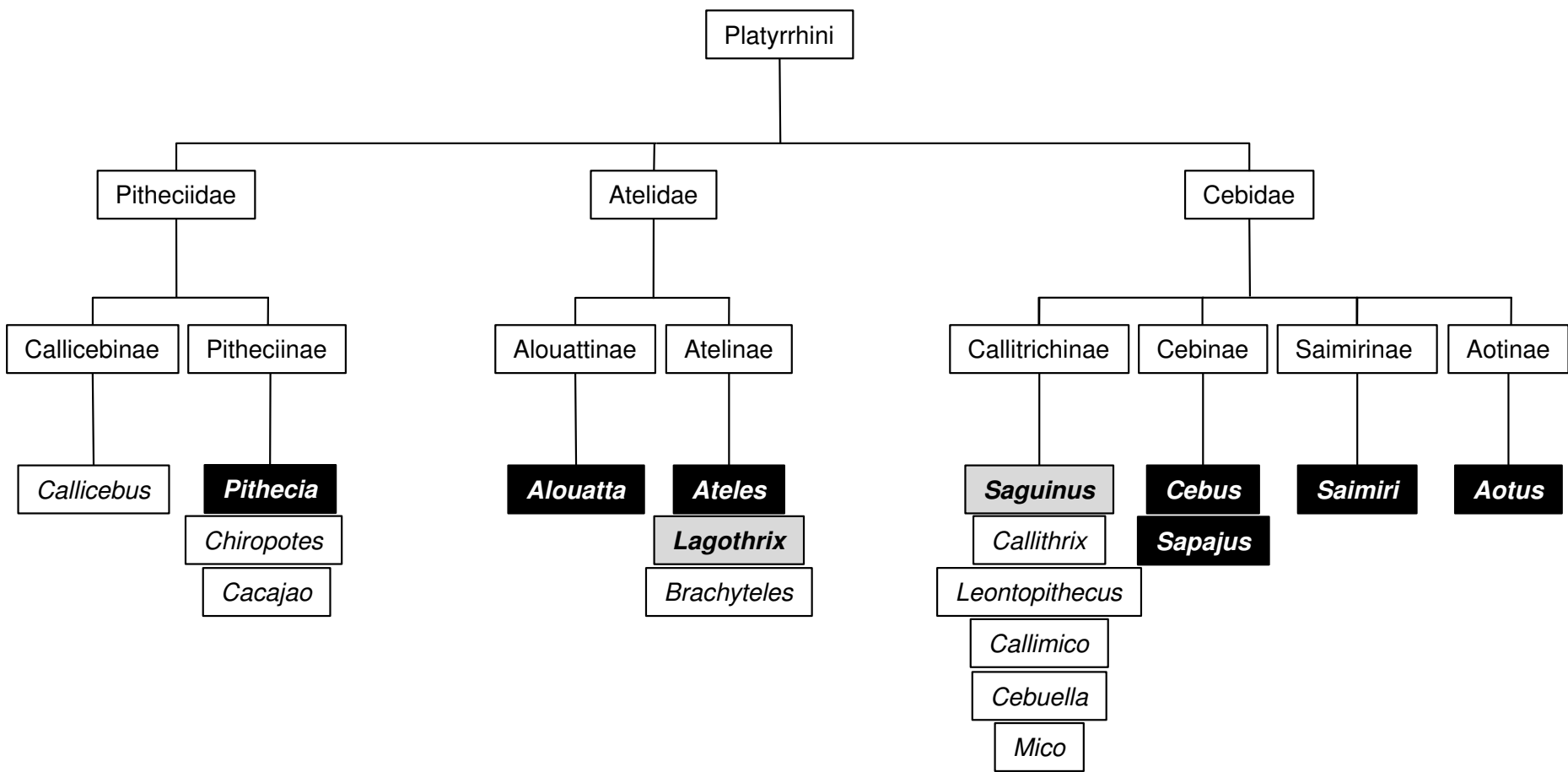
631 super-families (for OWM) and parvorders are labeled on the right-hand side of the figure. The
632 virus names are associated with their accession numbers. Viruses of Cercopithecidae comprise
633 those of the chacma (BaCMV NC_027016 (20, 58)) and olive (BaCMV AF387664 (21))
634 baboons, the moustached guenon (CceCMV1 AY728178), the agile mangabey (CagCMV1
635 AY608713), the drill (MndCMV AF282941 and MndCMV AF387665 strain OCOM6-2 (21,
636 27)), the mandrill (MndCMV AY129399), the African green monkey (CeHV5 AY117754,
637 CeHV5 FJ483969 strain Colburn, CeHV5 FJ483969 strain 2715, CaeCMV AF292066,
638 VervetCMV AY049066 strain CSG and CeHV3 AY049065 (21, 59)), the cynomolgus
639 (MfasCMV1 JN227533 strain Ottawa, MfasCMV1 AY728171 and MfasCMV KP796148 strain
640 Mauritius (60, 61)) and rhesus (McHV3 AF033184 and McHV3 DQ120516 isolate CMV 180.92
641 (62, 63)) macaques and the mantled guereza (CgueCMV1.1 AY129397 and CgueCMV1.2
642 EU118147 (29)). Viruses of Hominidae comprise those of the Bornean orangutan (PpygCMV1.1
643 AY129396), the human (HHV5 M14709 strain AD169, HHV5 NC_006273 strain Merlin, HHV5
644 AY315197 strain Towne and HHV5 AC146905 isolate Toledo (64-67)), the Western gorilla
645 (GgorCMV2.1 FJ538490 (26)) and the common chimpanzee (PnHV2 AF480884 strain
646 Heberling, PtroCMV1.1 FJ538485 and PtroCMV AF292063 (26, 65)). Regarding viruses of New
647 World monkeys, in addition to the ones describe in the present study, viruses of Cebidae
648 comprise those of the capuchin monkey (CebHV1 JQ264772 and CebusHV AF292067 from
649 *Cebus* sp.), the common squirrel monkey (SaHV4 FJ483967 and SscHV AF292065) and the
650 three-striped night monkey (AoHV1 FJ483970).

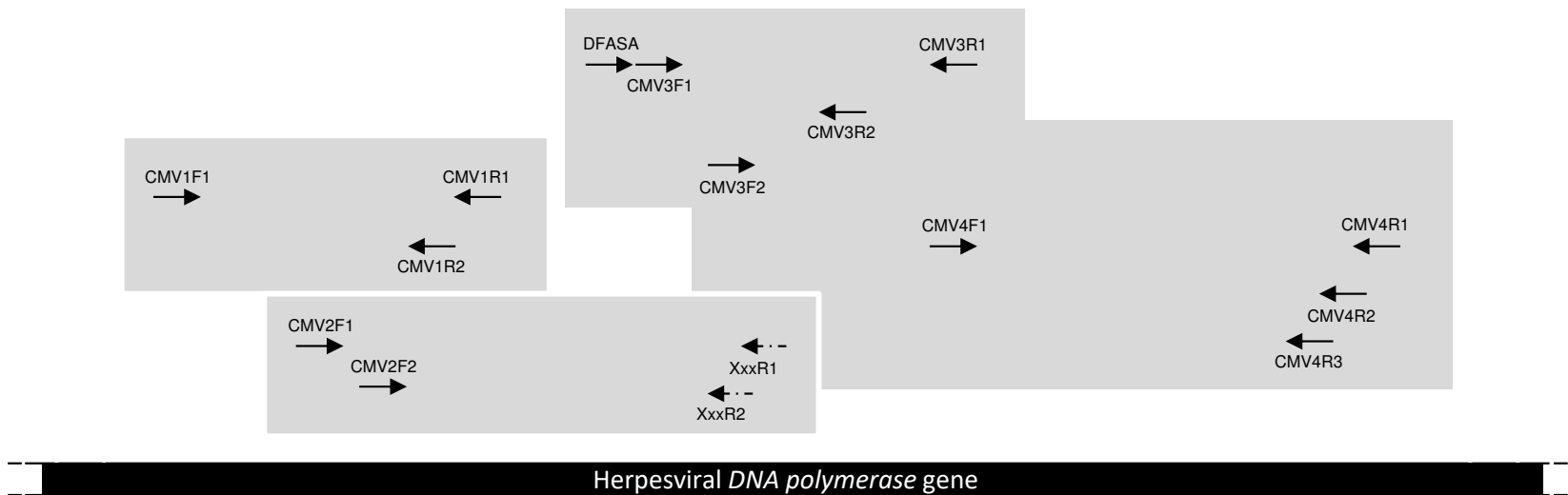
Parvorder

Family

Subfamily

Genus





DFASA/CMV3R1 or CMV3F1/CMV3R1 ————— CMV3F2/CMV3R1

DFASA/CMV3R1 ————— DFASA/CMV3R2

CMV3F1/CMV3R1 ————— CMV3F1/CMV3R2

CMV1F1/CMV1R1 ————— CMV1F1/CMV1R2

CMV2F1/XxxR1 ————— CMV2F2/XxxR2

CMV3F2/CMV4R1 ————— CMV3F2/CMV4R2

CMV3F2/CMV4R1 ————— CMV3F2/CMV4R3

CMV3F2/CMV4R1 ————— CMV4F1/CMV4R1

CMV3F2/CMV4R1 or CMV4F1/CMV4R1 ————— CMV4F1/CMV4R2

CMV3F2/CMV4R1 or CMV4F1/CMV4R1 ————— CMV4F1/CMV4R3

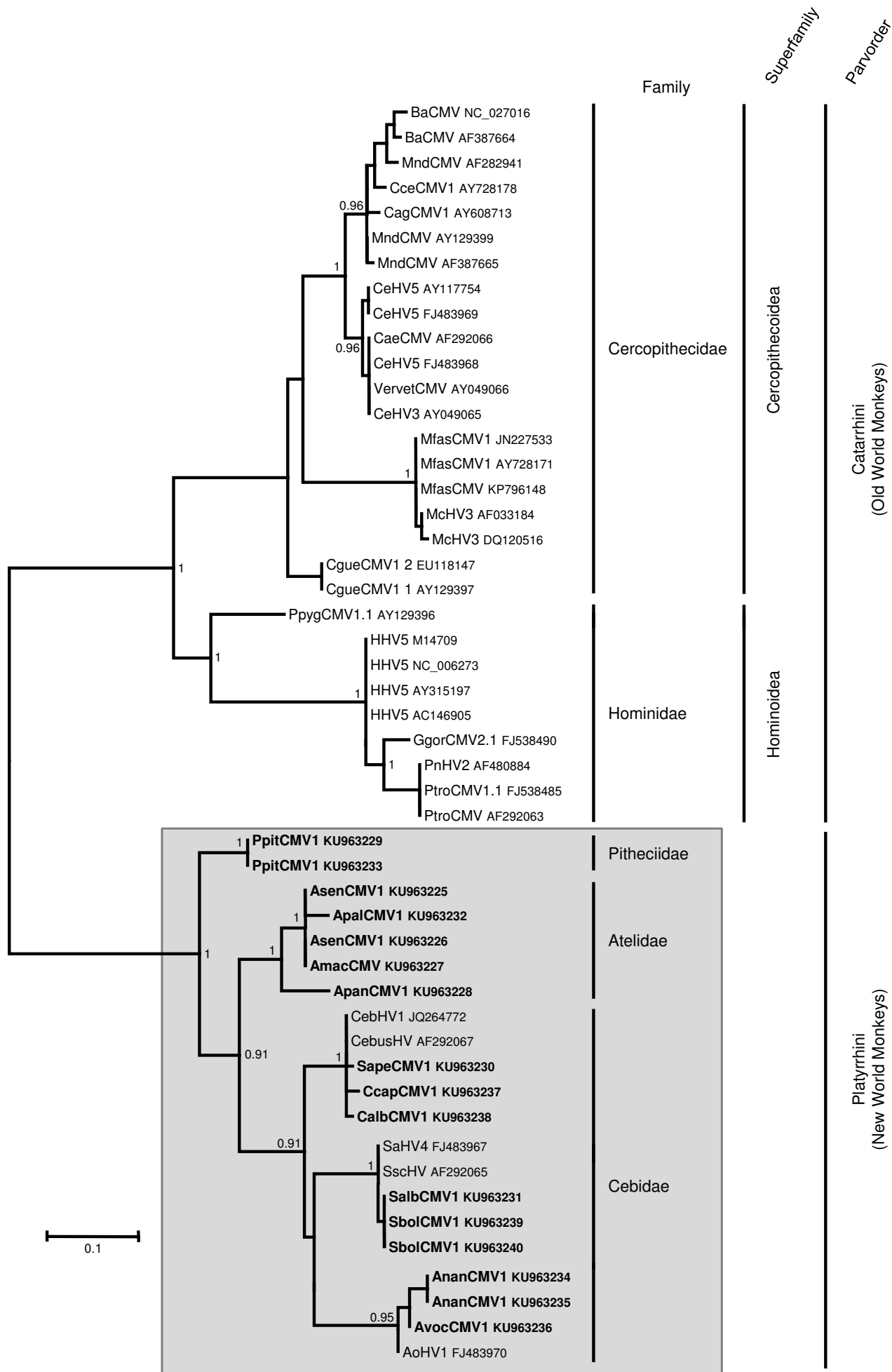


TABLE 1. New World non-human primates tested for cytomegaloviruses using molecular methods and survey results

Primate Taxonomy															
O	sO	iO	pO	Family ^a	Subfamily	Genus	species	subspecies	Common Name	Origin	Number ^b	Size ^c	Informal names		Accession numbers
													Name	Acronym	
Primates Haplorhini Simiiformes Platyrrhini							<i>midas</i>		Red-handed tamarin	French Guiana	0/54				
					Callitrichinae	<i>Saguinus</i>	<i>labiatus</i>		White-lipped tamarin	Peru	0/2				
							<i>oedipus</i>		Cottontop tamarin	Colombia	0/2				
			</												

Abbreviations: O, order; sO, suborder; iO, infraorder; pO, parvorder; CMV, Cytomegalovirus.

^a According to Perelman *et al.* (3).

^b Number: number of CMV-positive animals (by PCR, cloning and sequencing)/number of tested animals.

^c Size: size of the *DNA polymerase* gene fragments obtained, in bp.

^d According to Alfaro *et al.* (16).

TABLE 2. Oligonucleotide primers used for Cytomegalovirus *DNA polymerase* consensus and specific PCRs

Oligonucleotide	Orientation ^a	Location ^b	5' -> 3' sequence ^c	CMV sequence amplified
<i>DNA pol degenerate primers</i>				
CMV1F1	+	721 - 749	GAC AAG AAG TTG ACN ACN TTY GGN TGG TG	AmacCMV1,AsenCMV1, ApanCMV1
CMV1R1	-	1534 - 1559	ACG CCG GCY TCR TAR TGR AAR TTD AT	AmacCMV1,AsenCMV1, ApanCMV1
CMV1R2	-	1480 - 1504	CGT CCT GHA CRC ART AYT TNC CNA C	AmacCMV1,AsenCMV1, ApanCMV1
CMV2F1	+	1330 - 1352	GAY ATG TAY CCN GTS TGY ATG GC	AmacCMV1, AsenCMV1, ApanCMV1, PpitCMV1, SapeCMV1, SalbCMV1
CMV2F2	+	1372 - 1394	TAC AAR YTV AAY ACB ATG GCS GA	AmacCMV1, AsenCMV1, ApanCMV1, PpitCMV1, SapeCMV1, SalbCMV1
DFASA ^d	+	1768 - 1793	GTG TTC GAC TTY GCN AGY YTN TAY CC	All
CMV3F1	+	1795 - 1817	TCH ATY ATY ATG GCN CAY AAY CT	All
CMV3F2	+	2062 - 2090	ACG TGC AAT TCT TTY TAY GGB TTY ACN GG	All
CMV3R1	-	2269 - 2303	CGA TAG CAC ACA AAC ACR CTR TCN GTR TCN CCR TA	All
CMV3R2	-	2125 - 2147	CCG ATD CGN GTR ATR CTR GCC GC	All
CMV4F1	+	2266 - 2291	ATC TAY G GK GAC ACS GAY AGY GTS TT	AmacCMV1, AsenCMV1, ApalCMV1, AnanCMV1, ApanCMV1
CMV4R1	-	2782 - 2801	GCC GCY ARN CGY TTD ATG AC	ApalCMV1, AnanCMV1, ApanCMV1
CMV4R2	-	2477 - 2498	CGC ACC ARR TCR ACN CCY TTC A	AmacCMV1, AsenCMV1, ApalCMV1, AnanCMV1, ApanCMV1
CMV4R3	-	2419 - 2444	ATA TAC CGY TTY TTR CAG ATC ATC AT	AmacCMV1, AsenCMV1, ApalCMV1, AnanCMV1, ApanCMV1
<i>DNA pol antisense specific primers (in combination with CMV2F1 or CMV2F2)^e</i>				
PitR1	-	1958 - 1978	TGC GCT GAG CAA CCC ATT TAG	PpitCMV1
PitR2	-	1912 - 1932	ACG CAC CTC CGA CTT CAC AAA	PpitCMV1
AotR1	-	2019 - 2039	TTG TCG AGC AGC GTC CTC TTG	AnanCMV1, AvocCMV1
AotR2	-	1884 - 1904	ACC GTA CCG TTT TCG AAG TTA	AnanCMV1, AvocCMV1
SapR1	-	2106 - 2126	GCG ACT GGC AAA CAC GGT AAC	SapeCMV1
CapR2	-	1994 - 2016	GGG ATC TGT GCA ATC TTT CAT GG	CalbCMV1, CcapCMV1
CapR3	-	1939 - 1961	CGG GTC AAC AAT TCA GAA AGC AC	SapeCMV1, CalbCMV1, CcapCMV1
AteR1	-	1994 - 2016	CGG ATC TCT GCA ATT TTT CAT GG	ApanCMV1
AteR2	-	1935 - 1957	TCA GCA GTT CGG ACA ACA CTG AA	ApanCMV1
SaiR1	-	1948 - 1969	CCA CCC ACT TCG TTA GCA GCT C	SbolCMV1, SalbCMV1
SaiR2	-	2155 - 2175	ACG CGC GGT GTC TTG TAA CAT	SbolCMV1, SalbCMV1
AloR1	-	1959 - 1979	TTC CGT TGA GCC ACC CAT TTA	AmacCMV1, AsenCMV1, ApalCMV1
AloR2	-	1932 - 1954	GCA ATT CCG ATA GCA CTG AGG AA	AmacCMV1, AsenCMV1, ApalCMV1

^a +, sense; -, antisense.^b Positions relative to ATG of the *DNA polymerase* gene of AoHV1, accession number FJ483970.^c Positions of degeneracy follow the International Unit Base codes.^d Degenerate oligonucleotide primer described in Rose *et al.* (45).^e For clarity, all antisense specific primers are indicated as XxxR1 for R1 primers and XxxR2 for R2 primers in Figure 2.

TABLE 3. Nucleotide and amino acid identities between the novel Cytomegaloviruses and all other NHP Cytomegaloviruses and HCMV^a

		% identity ^b with													
Viruses of		<i>Sapajus</i> (SapeCMV1)		<i>Cebus</i> (CalbCMV1, CcapCMV1)		<i>Saimiri</i> (SbolCMV1, SalbCMV1)		<i>Aotus</i> (AvocCMV1, AnanCMV1)		<i>Pithecia</i> (PpitCMV1)		<i>Alouatta</i> (AmacCMV1, AsenCMV1, ApalCMV1)		<i>Ateles</i> (ApanCMV1)	
		Nucleotide	Amino acid	Nucleotide	Amino acid	Nucleotide	Amino acid	Nucleotide	Amino acid	Nucleotide	Amino acid	Nucleotide	Amino acid	Nucleotide	Amino acid
Cd ^c	Cn	<i>Sapajus</i>		87.6 - 88.7	98.0 - 99.3	76.1 - 77.0	89.1	74.3 - 75.4	85.7	72.9 - 73.1	83.7	74.5 - 74.7	83.0 - 85.0	75.9	80.3
		<i>Cebus</i> ^d	87.6 - 88.7	98.0 - 99.3	95.7 - 99.6	72.2 - 77.2	87.1 - 88.4	74.0 - 75.4	85.0 - 87.1	72.0 - 72.5	83.0 - 84.4	74.3 - 75.4	81.6 - 83.7	74.5 - 74.7	79.6 - 81.0
	Sn	<i>Saimiri</i> ^e	76.1 - 77.4	89.1	75.2 - 77.7	87.1 - 87.8	97.1 - 97.7	99.3 - 100	74.3 - 74.9	85.71	74.7 - 75.6	82.31	74.7 - 76.1	85.0 - 85.7	75.2 - 75.6
	An	<i>Aotus</i> ^f	74.3 - 75.4	85.7 - 86.4	74.0 - 75.6	85.0 - 87.8	74.0 - 74.7	85.7 - 86.4	94.8 - 96.2	96.6 - 98.6	74.0 - 74.7	83.7 - 85.0	71.8 - 74.8	79.6 - 82.3	71.1 - 72.2
Pd	Pn	<i>Pithecia</i>	72.9 - 73.1	83.7	72.0 - 72.5	83.0 - 83.7	74.72	82.3 - 83.3	74.0 - 74.7	84.4 - 85.0	99.6	100	72.9 - 75.2	83.0 - 85.0	75.2 - 75.4
Ad	Al	<i>Alouatta</i>	74.5 - 74.7	82.3 - 83.0	74.3 - 75.4	81.6 - 83.0	74.9 - 76.1	85.0 - 85.7	71.8 - 73.1	79.6 - 81.6	72.9 - 75.2	83.0 - 85.0	92.1 - 98.9	97.3 - 100	82.2 - 83.5
	At	<i>Ateles</i>	75.9	80.3	74.5 - 74.7	79.6 - 80.3	75.4 - 75.6	83.67	71.1 - 71.6	81.63	75.2 - 75.4	84.35	82.2 - 83.5	91.2 - 92.5	-
Hd ^g		<i>Homo</i>	64.1 - 64.6	67.35	64.3 - 65.9	66.7 - 68.0	63.2 - 64.3	67.35	70.0 - 70.9	72.1 - 72.8	65.2 - 66.1	70.07	61.6 - 63.7	65.99	62.1 - 63.0
	Hn	<i>Pan</i>	61.85	66.67	63.2 - 63.7	66.0 - 66.7	63.2 - 63.4	66.67	71.6 - 72.0	71.4 - 72.1	66.1 - 66.6	70.07	61.2 - 62.7	66.67	62.08
		<i>Gorilla</i>	62.98	67.35	63.7 - 63.9	66.7 - 68.0	62.3 - 62.5	67.35	71.33	72.1 - 72.8	62.98	70.75	61.0 - 62.1	65.99	60.95
	Po	<i>Pongo</i>	64.11	69.39	63.4 - 64.1	69.4	65.5 - 65.7	68.03	70.4 - 70.7	71.43	66.14	69.39	62.5 - 63.4	68.0 - 68.7	62.53
Ce ^g		<i>Macaca</i>	62.1 - 63.4	63.3 - 64.0	59.8 - 61.6	61.9 - 63.3	62.1 - 63.2	64.6 - 65.3	65.9 - 66.6	65.3 - 67.4	63.4 - 63.9	64.6 - 65.3	60.3 - 62.1	64.6 - 66.7	62.5 - 63.0
		<i>Papio</i>	64.8 - 66.4	64.0 - 64.6	62.1 - 63.4	61.9 - 63.3	62.1 - 62.3	66.0 - 66.7	68.2 - 69.1	64.0 - 65.3	64.6 - 64.8	65.3 - 66.0	62.3 - 63.4	66.0 - 66.7	62.53
	Cr	<i>Mandrillus</i>	64.1 - 65.7	64.0 - 66.0	61.8 - 63.4	61.9 - 64.6	61.4 - 63.0	66.7 - 68.0	67.5 - 68.8	64.6 - 67.4	64.3 - 65.9	66.0 - 68.0	60.9 - 64.6	66.0 - 68.0	61.8 - 62.7
		<i>Cerco/Chloro</i>	63.7 - 65.5	64.6 - 66.0	61.6 - 68.8	63.3 - 65.3	60.9 - 63.7	66.7 - 68.0	67.5 - 69.3	65.3 - 68.0	63.7 - 65.5	66.7 - 68.7	61.8 - 65.0	66.7 - 68.7	60.5 - 63.2
Co		<i>Colobus</i>	63.9 - 64.1	65.3	63.9	63.3 - 65.3	63.7 - 64.6	68.7	72.2 - 72.7	68.0	66.1 - 66.4	66.7	63.4 - 66.1	67.4 - 68.0	62.5 - 62.8

^a Numbers refer to values obtained in comparison with the 447-bp fragment of the conserved *DNA polymerase* gene that is available for all viruses.^b Sequences identified from specimens from the same primate species showing 100% nucleotide identity e.g. SbolCMV1, AnanCMV1, AmacCMV1 and AsenCMV1 are not included.^c Abbreviations, Cd, Cebidae; Cn, Cebinae; Sn, Saimiriinae; An: Aotinae; Pd, Pitheciidae; Pn, Pitheciinae; Ad, Atelidae; Al, Alouattinae; At, Atelinae; Hd, Hominidae; Hn, Homininae; Po, Pongidae; Ce, Cercopithecidae; Cr, Cercopithecinae; Co, Colobinae.^d Nucleotide and amino acid identities of viruses of *Cebus* rely on the sequences generated in this study as well as on sequences of CebHV1_{JQ264772} and CebusHV_{AF292067}.^e Nucleotide and amino acid identities of viruses of *Saimiri* rely on the sequences generated in this study as well as on sequences of SaimHV4_{FJ483967} and SscHV_{AF292065}.^f Nucleotide and amino acid identities of viruses of *Aotus* rely on the sequences generated in this study as well as on the sequence of AotHV1_{FJ483970}.^g Hominidae and Cercopithecidae viral sequences used to calculate nucleotide and amino acid identities correspond to those shown in Figure 3. Their GenBank accession numbers and associated publications are all reported in the figure and its legend.

TABLE 4. Estimates of Platyrrhini divergence time from CMV *DNA polymerase* sequence data and comparison with other estimates

Node	This study	Perelman et al. (3)	Jameson Kiesling et al. (15)
Catarrhini / Platyrrhini	32.45 ^a (17.76 - 52.33) ^b	43.47 (38.55 - 48.36)	37.72 (36.04 - 42.07)
Pitheciidae / Atelidae+Cebidae	22.33 (16.25 - 28.21)	24.82 (20.55 - 29.25)	25.51 (25.14 - 26.36)
Atelidae / Cebidae	17.16 (10.29 - 24.25)	22.76 (18.14 - 27.08)	24.04 (22.6 - 25.29)
Atelinae / Alouattinae	8.29 (2.57 - 14.82)	16.13 (10.52 - 21.35)	15.29 (13.29 - 17.99)
Within <i>Alouatta</i>	3.11 (0.47 - 6.82)	ND	5.14 (3.65 - 6.8)
Within Cebidae	11.54 (5.82 - 17.89)	19.95 (15.66 - 24.03)	20.86 (18.48 - 22.86)
Within <i>Aotus</i>	3.98 (0.8 - 8.25)	5.54 (3.20 - 7.85)	4.39 (3.12 - 5.75)
Within <i>Cebus</i>	3.26 (0.59 - 6.94)	6.00 (3.13 - 9.35)	5.19 (3.69 - 6.78)
Within <i>Saimiri</i>	2.68 (0.28 - 6.14)	2.24 (1.05 - 3.73)	0.97 (0.51 - 1.45)

^a times in units of millions of years^b values given in the parentheses indicate 95% HPD in millions of years.