



How Social Structure Drives the Population Dynamics of the Common Vampire Bat (*Desmodus rotundus*, Phyllostomidae)

Mailis Huguin, Nidia Arechiga-Ceballos, Marguerite Delaval, Amandine Guidez, Isai Jorge de Castro, Vincent Lacoste, Arielle Salmier, Alvaro Aguilar Setién, Claudia Regina Silva, Anne Lavergne, et al.

► To cite this version:

Mailis Huguin, Nidia Arechiga-Ceballos, Marguerite Delaval, Amandine Guidez, Isai Jorge de Castro, et al.. How Social Structure Drives the Population Dynamics of the Common Vampire Bat (*Desmodus rotundus*, Phyllostomidae). *Journal of Heredity*, 2018, 109 (4), pp.393-404. 10.1093/jhered/esx111 . pasteur-02197623

HAL Id: pasteur-02197623

<https://riip.hal.science/pasteur-02197623>

Submitted on 7 Apr 2020

HAL is a multi-disciplinary open access archive for the deposit and dissemination of scientific research documents, whether they are published or not. The documents may come from teaching and research institutions in France or abroad, or from public or private research centers.

L'archive ouverte pluridisciplinaire **HAL**, est destinée au dépôt et à la diffusion de documents scientifiques de niveau recherche, publiés ou non, émanant des établissements d'enseignement et de recherche français ou étrangers, des laboratoires publics ou privés.

1
2
3
4
5
6
7
8
9
10
11
12
13
14
15
16
17
18
19
20
21
22
23
24
25
26
27
28
29
30
31
32
33
34
35
36
37
38
39
40
41
42
43
44
45
46
47
48
49
50
51
52
53
54
55
56
57
58
59
60

1 HOW SOCIAL STRUCTURE DRIVES THE POPULATION DYNAMICS OF THE
2 COMMONVAMPIREBAT(DESMODUS ROTUNDUS,PHYLLOSTOMIDAE) ?

8 Maïlis Huguin^{1,2}, Nidia Arechiga-Ceballos^{3*}, Marguerite Delaval^{4*}, Amandine Guidez^{2*}, Isai
9 Jorge de Castro^{5*}, Vincent Lacoste^{2*}, Arielle Salmier^{2*}, Alvaro Aguilar Setien^{6*}, Claudia
10 Regina Silva^{5*}, Anne Lavergne², Benoit de Thoisy^{1,2} §

12 * alphabetically ordered
13 § corresponding author

- 15 1. Kwata NGO, 16 avenue Pasteur, 97300 Cayenne, French Guiana
16 2. Laboratoire des Interactions Virus Hôtes, Institut Pasteur de la Guyane, Cayenne, French
17 Guiana
18 3. Laboratorio de Rabia, Instituto de Diagnóstico y Referencia Epidemiológicos. Mexico DF,
19 Mexico.
20 4. Office National des Forêts, Cayenne, French Guiana.
21 5. Laboratório de Mamíferos, Instituto de Pesquisas Científicas e Tecnológicas do Estado do
22 Amapá, Macapá, Amapá, Brazil.
23 6. Unidad de Investigación Médica en Inmunología, Coordinación de Investigación, Instituto
24 Mexicano del Seguro Social, México DF, Mexico

1

2 Running title: Sociality, structure and virus spread in vampires

3

4 Word count: 7,572 (excluding references)

5

6 Abstract

7 Social systems are major drivers of population structure and gene flow, with important effects

8 on dynamics and dispersal of associated populations of parasites. Among bats, the common

9 vampire bat (*Desmodus rotundus*) has likely one of the most complex social structure. Using

10 autosomal and mitochondrial markers on vampires from Mexico, French Guiana and North

11 Brazil, from both roosting and foraging areas, we observed an isolation by distance at the

12 wider scale and lower but significant differentiation between closer populations (<50 km). All

13 populations had a low level of relatedness and showed deviations from Hardy-Weinberg

14 equilibrium and a low but significant inbreeding coefficient. The associated heterozygote

15 deficiency was likely related to a Wahlund effect and to cryptic structures, reflecting social

16 groups living in syntopy, both in roosting and foraging areas, with only limited admixture.

17 Discrepancy between mitochondrial and nuclear markers suggests female philopatry and

18 higher dispersal rates in males, associated with peripheral positions in the groups. Vampires

19 are also the main neotropical reservoir for rabies virus, one of the main lethal pathogens for humans.

20 Female social behaviors and trophallaxis may favor a rapid spread of virus to related and

21 unrelated offspring and females. The high dispersal capacity of males may explain the

22 wider circulation of viruses and the inefficacy of bat population controls. In such

23 opportunistic species, gene connectivity should be considered for decision making. Strategies

24 such as culling could induce immigration of bats from neighboring colonies to fill vacant

25 roosts and feeding areas, associated with the dispersal of viral strains.

1	
2	
3	1
4	
5	2
6	
7	3
8	Key words
9	
10	4
11	Sociality – structure – population dynamics – parasite spreading – vampire bat – Desmodus
12	5
13	rotundus
14	
15	
16	
17	
18	
19	
20	
21	
22	
23	
24	
25	
26	
27	
28	
29	
30	
31	
32	
33	
34	
35	
36	
37	
38	
39	
40	
41	
42	
43	
44	
45	
46	
47	
48	
49	
50	
51	
52	
53	
54	
55	
56	
57	
58	
59	
60	

INTRODUCTION

Bats (Chiroptera) are widely distributed across the world and are very diverse in their morphology, biology and ecology (Fenton, 1997). They are ranked the second largest species-rich mammalian order, accounting for 20% of all mammal species in the world. With their roles of seed dispersers, pollinators and regulators of arthropod populations, they have major ecological functions and contribute to ecosystem services (Kunz et al., 2011). Because of difficult direct observation related to their nocturnality, small size and cryptic behavior, many aspects of bat biology have been investigated with molecular approaches, namely population genetics, which has been widely used and has shown interspecific structuring variations in relation to bat behavior, mating, social systems and movements (Moussy et al., 2013; Miller-Butterworth et al., 2014; Rossiter et al., 2012).

Bats are also a frequent source of pathogen spillover to humans and livestock, and a reservoir for emerging infectious diseases (Escobar et al., 2015). The ability of bats to effectively ensure virus amplification and dispersion is related to their resistance to and/or control of many infections (O'Shea et al., 2014). Neotropical bats are, notably, the main reservoir of rabies virus. Serological and molecular surveys of this virus have shown a high diversity of positive bat species, suggesting a wide distribution and circulation of the virus in Amazonia (de Almeida et al., 2011; de Thoisy et al., 2016; Salmon-Mulanovich et al., 2007; Sodré et al., 2010; Torres et al., 2005) with a major role played by the common vampire bat *Desmodus rotundus* (Phyllostomidae).

Distributed from northern Mexico to northern Chile and the Amazon basin (Greenhall et al., 1983), the common vampire bat transmits the rabies virus throughout Latin America, causing

1
2
3
4
5
6
7
8
9
10
11
12
13
14
15
16
17
18
19
20
21
22
23
24
25
26
27
28
29
30
31
32
33
34
35
36
37
38
39
40
41
42
43
44
45
46
47
48
49
50
51
52
53
54
55
56
57
58
59
60

1 lethal human cases and thousands of livestock deaths every year (Blackwood et al., 2013).
2
3 Despite their major contribution to virus maintenance and dispersal, most studies carried out
4
5 on *D. rotundus* relate to their physiological characteristics (Reddrop et al., 2005), their
6
7 reproductive cycle (Wimsatt & Trapido, 2005), the choice of host (Voigt & Kelm, 2006) as
8
9 well as their behavior and social structure (Wilkinson, 1985a, b; Trajano, 1996). Adult
10
11 females show a strong philopatry to their natal group, although adult males disperse and
12
13 defend a roost where females roost (Wilkinson, 1985a, 1985b). Besides being
14
15 hematophagous, vampire bats have the particularity of practicing blood regurgitations and
16
17 other social behaviors that strengthen social ties. According to Wilkinson (1984), exchanges
18
19 are based on reciprocal altruism (Axelrod & Hamilton, 1981; Trivers, 1971), which affects the
20
21 social structure of the population. Molecular approaches can never the less be reliable tools to
22
23 decipher uncovered aspects of population dynamics. Several studies have been conducted on
24
25 the genetic structure of vampire bat populations (Martins et al., 2009; Romero-Nava et al.,
26
27 2014; Streicker et al., 2016).
28
29
30
31
32
33
34
35

36 Host social systems also have major effects on parasite population dynamics, structure and
37
38 dispersal (Streicker et al., 2016; van Schaik & Kerth, 2016). Therefore, information on the
39
40 vampire bat social system, spatial organization and population connectivity is required for a
41
42 better understanding of rabies virus dynamics (Streicker et al., 2016). Trophallaxis and social
43
44 grooming contribute greatly to virus transmission due to direct saliva contact with broken skin
45
46 and mucosa between individuals (Kobayashi et al., 2005; Velasco-Villa et al., 2006). The
47
48 wide and high prevalence of rabies-neutralizing antibodies found in *D. rotundus* in French
49
50 Guiana populations (de Thoisy et al., 2016) can be related to male dispersal (Wilkinson,
51
52 1985b), favoring virus dispersal. Alternatively, the philopatry of females and population's
53
54 social organization (Wilkinson, 1984) might be the cause of population structuring, limiting
55
56
57
58
59
60

inter-population interactions and therefore the role of females in virus dispersal (Streicker et al. 2016).

In this study, seven microsatellites and the mitochondrial DNA Control Region were used to investigate the genetic structure of *D. rotundus* at two spatial scales. Microsatellites were chosen because these are reference markers for many population genetics studies and molecular ecology (Huth-Schwarz et al., 2011; McCulloch, 2012; Pearse et al., 2006; Zeng et al., 2012). They are especially used for the analysis of demographic history, population structure at a fine geographic scale and social structure (Lecompte et al., 2017; Selkoe, 2006; Trinca et al., 2013). The aim of this study was to improve our knowledge on vampire bat populations, seeking to investigate how the genetic structure is impacted by social behavior at the intra- and inter-population scales. Those results are discussed about three main issues, phylogeographic structuring, drivers of social organization, and potential to influence virus transmission.

MATERIALS AND METHODS

Ethical and legal statements

Animals were captured, handled, sampled and, whenever necessary, euthanized in accordance with ASM guidelines (Sikes et al., 2011), and in French Guiana under the supervision of researchers in possession of the national "animal experimentation level 1" degree. Bats are not protected by law in French Guiana, but the project was presented to the Conseil Scientifique Régional pour le Patrimoine Naturel de la Guyane, and approved by this council. Captures that occurred within protected areas (nature reserves) received approval of the Conseil Scientifique Régional du Patrimoine Naturel on 26 January 2010 and ad-hoc authorizations

1
2
3
4
5
6
7
8
9
10
11
12
13
14
15
16
17
18
19
20
21
22
23
24
25
26
27
28
29
30
31
32
33
34
35
36
37
38
39
40
41
42
43
44
45
46
47
48
49
50
51
52
53
54
55
56
57
58
59
60

1 (no. 2011–35 from the 05/30/2011, no. 35 and 59 obtained 03/21/2013 and 04/17/2013,
2 respectively, and delivered by the Préfecture de la Guyane). All samples are kept in Cayenne,
3 French Guiana, in the JAGUARS tissue collection (CITES FR973A).

4
5 Bat collection in Amapá (North Brazil) followed the Brazilian legislation and was authorized
6 for IBAMA / Sisbio19140/2008, SEMA 1/2008 licenses. Samples of vampire bats were
7 deposited in the tissue collection in Collection Scientific Amapá Fauna (CCFA) located at the
8 Instituto de Pesquisas Científicas e Tecnológicas do Estado do Amapá.

9
10 In Mexico, traditional rabies control is based on reduction of species populations. The
11 samples used in this study were collected as part of the activities of Paralytic Rabies Control
12 Campaigns of the States. Vampire bats were captured with mist nets complying with Mexican
13 regulations (Norma Oficial Mexicana NOM-067-ZOO-2007 “Campaña Nacional para la
14 prevención y control de la rabia en bovinos y especies ganaderas”) in corrals and roosts.

15
16 Sample collection and study areas

17 A total of 218 individuals were captured at five localities in French Guiana between 2009 and
18 2013 (Figure 1). The two first localities were breeding caves located in pristine primary
19 lowland forests. The third and fourth localities were feeding areas located in pristine primary
20 lowland forests, and the fifth was a feeding area located in edge habitat in a disturbed
21 environment. The bats sampled in the first locality formed population 1 (below, POP1), the
22 bats sampled in the second locality formed population 2 (POP2). The bats sampled in the third
23 and fourth localities were pooled and formed population 3 (POP3) because exploratory
24 analysis showed no genetic differentiation between them ($F_{st} = 0.003$; $p > 0.3$). The bats
25 sampled in the fifth locality formed population 4 (POP4).

1

2 The DNA samples of 39 individuals from Amapá State, northern Brazil, formed population 5
 3 (POP5) and were sampled in three localities in the northeast of Amapá: Horto São Bento,
 4 Rebio Lago Piratuba and Rebio Parazinho. The DNA samples of 82 individuals from Mexico
 5 formed population 6 (POP6) and were sampled in four localities: Morelos, Puebla, Veracruz
 6 and Hidalgo.

7

8 In French Guiana, captures were made at night using Japanese mist nets (Ecotone ®, Gdynia,
 9 Poland) as implemented in the region (Borisenko et al., 2008). Captures in breeding caves
 10 were performed inside with nets erected during the day time to localize the colony at rest and
 11 target captures on vampire bats only, to avoid disturbing other species. To prevent repeated
 12 disturbance of the colonies, captures were implemented by three persons only and lasted no
 13 more than 30 min. Whenever possible, females with their offspring were not captured and
 14 were directly released if they fell into the nets, so no young were sampled. All animals
 15 captured were kept in individual bags, blood-sampled (for detection of rabies virus
 16 neutralizing antibodies, for example; de Thoisy et al., 2016) and measured at the mouth of the
 17 cave in order to limit disturbance inside. A wing tissue sample was taken using a 3-mm
 18 biopsy punch and stored in 95% ethanol at -20°C until DNA extraction. Bats were released
 19 directly after the procedure. In the caves, several capture/recapture sampling sessions were
 20 implemented, so that the animals could be marked (Passive Integer Transponder BackHome,
 21 Virbac, France, injected subcutaneously between the shoulders).

22

23 DNA extraction, microsatellite and D-loop control region genotyping

24 Biopsy punches were pre-lysed within the EasyMAG lysis buffer (BioMérieux, Marcy
 25 l'Etoile, France) at 4°C overnight, then in Tris-SDS buffer and proteinase K at 56°C before

1
2
3
4
5
6
7
8
9
10
11
12
13
14
15
16
17
18
19
20
21
22
23
24
25
26
27
28
29
30
31
32
33
34
35
36
37
38
39
40
41
42
43
44
45
46
47
48
49
50
51
52
53
54
55
56
57
58
59
60

1 grinding. DNA was isolated using NucliSENS EasyMAG[®] bio-robot (BioMérieux, Marcy
2 l'Etoile, France) following standard protocols for tissue. The DNA pellet extracted was
3 resuspended in H₂O PPI and stored at −20°C until use.
4
5 Samples were genotyped using a panel of seven microsatellite markers (Bardeleben et al.,
6 2007; Ortega et al., 2002; Piaggio et al., 2008) as described in supplemental data (supp data,
7 Table s1). PCR was carried out in 12 µL with 1.5µL of each primer (5mM), 1.5µL of buffer,
8 1.2µL of dNTP (5mM), 0.1µL of BIOTAQ[™], 0.4–0.6 µL of MgCL₂ (50mM) (supp data,
9 Table s2), and 2µL of diluted DNA (1/10). PCR reactions consisted of initial denaturation at
10 94°C for 5 min, followed by 40–45 cycles depending on the locus at 94°C for 30 s, 30 s at the
11 annealing temperature (supp data, Table s2), 72°C for 45 s, and final elongation at 72°C for
12 10 min. PCR products were mixed with Genome Lab SLS and GenomeLab DNA 400 size
13 standard and run on a GENOMELAB GEXP genetic analysis (Beckman Coulter ®).
14 Microsatellite alleles were sized using GENOMELAB SYSTEM software (Beckman Coulter ®).
15
16 The primers F(mt) and P(mt) (Wilkinson and Chapman, 1991) were used to amplify the
17 hypervariable domain HVI of the mitochondrial DNA (mtDNA) control region (D-loop).
18 PCRs were performed using a standard procedure with the BIOTAQ[™] DNA Polymerase
19 PCR kit (BioLine Reagents Limited, London, UK). PCR was carried out in a 50-µL PCR
20 containing 10 ng of genomic DNA, 5 µL 10x buffer, 1.5 mM MgCl₂, 0.5 mM of each dNTP,
21 0.6 mM of each primer and 0.5 U BIOTAQ[™] DNA Polymerase (BioLine, London, UK). The
22 cycling conditions included an initial denaturation step at 95°C for 5 min followed by 35
23 denaturation cycles at 95°C for 45s, annealing for 45s at 55°C, and elongation at 72°C for 1
24 min. A final 7-min extension step at 72°C followed the last cycle. Beckman Coulter
25 Genomics carried out sequencing (Beckman Coulter Genomics, Takeley, UK).

- 1
- 2
- 3
- 4
- 5
- 6
- 7
- 8
- 9
- 10
- 11
- 12
- 13
- 14
- 15
- 16
- 17
- 18
- 19
- 20
- 21
- 22
- 23
- 24
- 25

The presence of null alleles, large allele dropout and stuttering were tested using MICROCHECKER 2.2.3 (van Oosterhout et al., 2004). Tests for departure from HWE were performed for each population in GENEPOP3.4 (Raymond & Rousset, 1995) under the hypothesis of heterozygote deficit. Linkage disequilibrium was tested using GENEPOP; genetic diversity indices and F_{st} averaged over loci (Weir & Cockerham, 1984) were obtained for and between populations and between females and males from ARLEQUIN 3.5 (Excoffier et al., 1992) with 20,000 permutations and GENETIX 4.0.5.2 (Belkhir et al., 2004) with the fixation index F of Wright (1969), according to Weir & Cockerham (1984). For all pairwise comparisons, all significance levels were adjusted using sequential Bonferroni correction (Rice, 1989).

For each population sample and for each locus, the BOTTLENECK 1.2.02 program (Cornuet & Luikart, 1996) computes the distribution of the heterozygosity expected from the observed number allele k , given the sample size n under the assumption of mutation-drift equilibrium. The distribution was obtained under the two-phase mutation model (TPM) recommended for microsatellite loci because it is a better fit to observe allele frequency data than the infinite alleles model (IAM) and the single-step model (SSM) (Di Rienzo et al., 1994). If a population has a normal L-shaped distribution, it is likely that this population has not experienced a recent reduction of their effective population size.

21 Relatedness

Relatedness (r) between individuals of unknown ancestry was estimated by ML-RELATE 1.0 (Kalinowski et al., 2006), based on maximum likelihood estimates of relatedness, expected to be the most accurate method for such purposes (Milligan, 2003). ML-RELATE can adjust relatedness calculations to accommodate null alleles using a HWE test to detect a deficiency

1
2
3
4
5
6
7
8
9
10
11
12
13
14
15
16
17
18
19
20
21
22
23
24
25
26
27
28
29
30
31
32
33
34
35
36
37
38
39
40
41
42
43
44
45
46
47
48
49
50
51
52
53
54
55
56
57
58
59
60

1 of heterozygosity (U-statistic of Rousset & Raymond, 1995). ML-RELATE uses the downhill
2 simplex routine to find the maximum likelihood estimate of (r). Experience has shown that
3 likelihood surfaces for (r) can have multiple peaks (Kalinowski et al., 2006). Therefore, the
4 downhill simplex routine is started from the default values of 11 sets of points, one of which
5 is {Unrelated, Full Sibs, Parent/Offspring}. The other ten are random values. The relatedness
6 coefficient (r) was estimated for each pair of individuals in each population by the software
7 and the average (r) for each population was then calculated.

8

9 Gene flow

10 The number of migrants per generation by pairwise population where $N_m = (1 - F_{st})/4$. F_{st}
11 (estimates of gene flow according to Wright, 1969) was calculated with the GENETIX4.0.5.2
12 program (Belkhir et al., 2004).

13

14 Population structuring

15 Overall population structuring was inferred by the dapc function without any a priori
16 information on the origin of individuals (discriminant analysis of principal components) of the
17 ADEGENET package (Jombart, 2011) in the R 3.2.3 program (R Development Core Team,
18 2008). ADEGENET uses a multivariate analysis that does not rely on the assumption of HWE,
19 the absence of linkage disequilibrium or specific models of molecular evolution to identify
20 clusters within genetic data (Jombart, 2008). The dapc function infers the number of clusters
21 of genetically related individuals: data are first transformed using a principal component
22 analysis (PCA) and subsequently clusters are identified using discriminant analysis (DA). A-
23 score optimization and cross-validation were used to determine the optimal number of
24 principal components (PCs) to maximize power of discrimination while also minimizing the
25 risk of overfitting (nine and fourteen were used, respectively). The Bayesian information

1 criterion (BIC) was used to determine the most appropriate value of K and individuals were
 2 assigned to clusters using DAPC. The assign.per.pop slot was generated and indicated the
 3 proportions of successful reassignment (based on the discriminant functions) of individuals to
 4 their original clusters. High values indicate clear-cut clusters, while low values suggest
 5 admixed groups.

6 7 Hidden structure

8 Cryptic subpopulations within each population were investigated using BAPS 5.4 (Corander et
 9 al., 2004), identifying a hidden population structure through a Bayesian analysis and detecting
 10 a possible Wahlund effect. The program was run 50 times for each population to obtain the
 11 right number of k subpopulations on the basis of the estimated "log probability of data" The k with
 12 the highest posterior probability ("marginal likelihood") was considered the most likely
 13 number of subpopulations identified by BAPS. In accordance with De Meeûs guidelines
 14 (2012), Fis was recalculated in the best distribution identified by BAPS for each population
 15 with GENETIX 4.0.5.2 and noted FisClus. Then the FisClus was compared with the initial Fis
 16 using a unilateral Wilcoxon signed-rank test for paired data (with the R 3.2.3 program) in
 17 order to identify geographical microstructure or social structure. For POP1 and POP2, Fst
 18 averaged over loci were obtained with ARLEQUIN 3.5 for each subpopulation whose number of
 19 individuals was greater than three (six subpopulations for POP1 and four for POP2) and the
 20 relatedness coefficients were estimated with ML-RELATE 1.0 (Kalinowski et al., 2006) for each
 21 subpopulation whose number of individuals was greater than one (12 subpopulations for POP1
 22 and 10 subpopulations for POP2, see below).

23 As BAPS may overestimate K due to the inference of a few small spurious subpopulations
 24 (Latch et al., 2006), the results of the BAPS analysis were verified with STRUCTURE 2.3.4
 25 (Pritchard et al., 2000) using admixture model (burnin: 100,000, chains after burnin: 500,00)

1
2
3
4
5
6
7
8
9
10
11
12
13
14
15
16
17
18
19
20
21
22
23
24
25
26
27
28
29
30
31
32
33
34
35
36
37
38
39
40
41
42
43
44
45
46
47
48
49
50
51
52
53
54
55
56
57
58
59
60

1 in accordance with guidelines described in Pritchard et al. (2010). The most likely K number
2 of populations was defined both on the basis of the estimated "log probability of data", and
3 with the Evanno's ΔK statistic based on the rate of change in the log probability of data
4 between successive K values (Evanno et al., 2005), implemented with STRUCTURE
5 HARVESTER (Earl, 2012). For both algorithms (STRUCTURE and BAPS), all inferred subpopulations
6 were assumed to be panmictic and cryptic sub-structures were identified by minimizing Hardy-
7 Weinberg and linkage disequilibrium within each of k clusters (Corander et al., 2004; De Meeûs,
8 2012; Pritchard et al., 2000). Although STRUCTURE and BAPS used different methods to search for the
9 most likely number of subpopulations, both performed well, even at low levels of population
10 differentiation (Latch et al., 2006). Nevertheless, BAPS is more specifically used to identify the
11 Wahlund effect and estimate the population substructure (Dharmarajan et al., 2011; Ravel et al.,
12 2007).

13
14 **MtDNA D-loop sequence analysis**

15 DNA sequences were edited and aligned with MEGA 6.06 (Tamura et al., 2013). Gene
16 diversity (Hs), nucleotide diversity (π) and genetic differentiation (Fst averaged over loci)
17 (Weir & Cockerham, 1984) were obtained for each population from ARLEQUIN 3.5 (Excoffier
18 et al., 1992) with 99,999 permutations. Haplotype distribution was established using DNASP
19 5.10.1 (Rozas, 2009; Rozas & Rozas, 1995) and haplotype networks were constructed using
20 the median joining network algorithm implemented in NETWORK 5.0 (Bandelt et al., 1999).

21
22 **RESULTS**

23
24 **Microsatellites**

25

1

2 Genetic diversity and basic statistics

3 A total of 158 alleles were detected for the seven microsatellite loci. All loci were
 4 polymorphic (range, 13–30 alleles per locus) for all populations. In some populations,
 5 markers showed low levels of estimated null allele frequency (supp data, Table s3), which
 6 nevertheless assumes that populations are at HWE. However, all vampire populations
 7 deviated from HWE (see below); therefore, estimation was biased and significant null allele
 8 rates are likely the cause of those deviations towards a heterozygote deficit (Dabrowski et al.,
 9 2014). Two markers showed likelihood of stuttering, but these markers were checked with at
 10 least two readings and were regarded as having no scoring errors; consequently, they were
 11 retained in the analysis.

12

13 Observed and expected heterozygosity, allelic richness and gene diversity were moderate to
 14 high and consistent across all populations (Table 1). POP4 had the greatest genetic diversity
 15 (0.730 ± 0.406) followed by POP5 and POP1, while POP3 had the lowest genetic diversity
 16 (0.595 ± 0.330) followed by POP6 and POP2.

17

18 All populations presented deviations from HWE and the low significant inbreeding coefficient
 19 was explained by heterozygote deficiency (Table 1), but no linkage disequilibrium was
 20 detected. A recent bottleneck was detected in POP6 with a significant Wilcoxon signed rank
 21 test ($p < 0.05$) and a normal-shift distribution. In POP4 a recent bottleneck was also detected
 22 with a shift in distribution of allele frequencies, but no significant test. Other populations had
 23 both a non-significant Wilcoxon signed rank test ($p > 0.05$) and a normal-shift distribution.

24

1
2
3
4
5
6
7
8
9
10
11
12
13
14
15
16
17
18
19
20
21
22
23
24
25
26
27
28
29
30
31
32
33
34
35
36
37
38
39
40
41
42
43
44
45
46
47
48
49
50
51
52
53
54
55
56
57
58
59
60

1 The relatedness coefficient (r) was very low for overall populations ($r_{\text{mean}} = 0.07$). POP1
2 showed the strongest(r) value with 8% of related followed by POP6, while POP4 showed the
3 lowest with 5% of related (Table 1).

4
5 Gene flow

6 Between populations, estimated F_{st} averaged over loci were low to high ($F_{\text{st}_{\text{mean}}}=0.084$;
7 $p<0.01$) and showed significant genetic structure between populations (Table 2). The genetic
8 structure of the French Guiana populations (POP1 to POP4) appeared to be the lowest
9 ($F_{\text{st}_{\text{mean}}}=0.031$; $p<0.01$), while genetic differentiation between the Mexican population (POP6)
10 and the Guianese populations seemed to be the strongest ($F_{\text{st}_{\text{mean}}}=0.183$; $p<0.01$). The
11 Brazilian population (POP5) showed moderate F_{st} with the Guianese populations and a strong
12 genetic structure with the Mexican population, although lower than between the Mexican and
13 Guianese populations. N_m per generation varied greatly between population pairs and
14 followed a similar pattern to F_{st} values. POP2 and POP3 shared the highest N_m ($N_m=20.26$)
15 per generation and the lowest F_{st} -values (0.009; $p<0.01$), followed by POP1 and POP4
16 ($N_m=11.94$; $F_{\text{st}}=0.023$; $p<0.01$). Structuration discrepancies were evidenced in females and
17 males. Considering females only, a significant but low genetic structure was observed
18 between the four Guianese populations ($F_{\text{st}_{\text{mean}}}=0.046$; $p<0.05$), POP3 showing moderate and
19 the strongest F_{st} with POP4 ($F_{\text{st}}=0.081$; $p<0.05$) and POP2 showing the lowest with POP3
20 ($F_{\text{st}}=0.026$; $p<0.05$). When focusing on males only, a lower and nonsignificant genetic
21 structure was observed ($F_{\text{st}_{\text{mean}}}=0.019$; $p>0.1$) except between POP1 and POP2 ($F_{\text{st}}=0.045$,
22 $p<0.05$) and between POP1 and POP3 ($F_{\text{st}}=0.034$, $p<0.05$).

23
24
25

1 Population structuring

2 The dapc analysis segregated the individuals into six genetic clusters (CLUS-A, B, C, D, E & F)
 3 (Figure 2). The “find.clusters” function of ADEGENET showed a clear BIC decrease until $k =$
 4 six clusters after which BIC increased. Those six clusters were highly differentiated (slot
 5 assign.per.pop; $p < 0.05$). The subdivision observed is associated with the geographic origin of
 6 the populations. CLUS-B and CLUS-D were mostly represented by the Mexican population
 7 (100% and 97%, respectively). CLUS-E was present in the Brazilian population and the
 8 Guianese populations sampled in the north (POP1, POP2 and POP4; Figure 1). CLUS-A, CLUS-C
 9 and CLUS-F were shared by all the Guianese and Brazilian populations. These three last
 10 clusters overlapped despite a significant differentiation between them (Figure 3).

11
 12 POP1 and POP5 showed the same trend, mostly represented by CLUS-C (41% and 49%,
 13 respectively) and CLUS-E (27% and 32%, respectively) and poorly represented by CLUS-A (7%
 14 and 2%). POP4 showed a close pattern and was mostly represented by CLUS-E and CLUS-F
 15 (28% and 38%, respectively). POP2 and POP3 showed a similar pattern and were mostly
 16 represented by CLUS-A (32% and 33%, respectively) and CLUS-C (30% and 34%) and poorly or
 17 not represented by CLUS-E (11% and 0%, respectively) (Figure 3).

20 Hidden structure

21 The analysis of POP4 was not relevant with both programs probably because of its small
 22 sample size ($n=14$). With BAPS, five individuals of 14 were single in their subpopulation and
 23 the largest cluster contained 4 individuals. STRUCTURE failed to detect a stable number of
 24 subpopulations.

1
2
3 1 For the other five populations, the clustering algorithm used by BAPS identified a variable
4
5 2 number of subpopulations (mean: 11.6; range: 8–14) in every populations examined; in
6
7 3 overall populations, more than 75% of individuals in average were grouped into 3 to 6 main
8
9 4 subpopulations.
10
11 5 FisClus of the combined populations was significantly lower than Fis (Wilcoxon signed rank;
12
13 6 $p<0.05$) (Table 3); it is likely that each population was composed of several genetically
14
15 7 distinct entities. The genetic differentiation between the subpopulations of POP1 was high
16
17 8 ($F_{st_{mean}} = 0.131 \pm 0.043$; $p<0.01$) while the genetic structure between subpopulations of POP2
18
19 9 was lower but significant ($F_{st_{mean}} = 0.058 \pm 0.018$; $p<0.01$) (Table 4). The average related
20
21 10 coefficients (r) of POP1 subpopulations ($r_{mean} = 0.031 \pm 0.042$) and POP2 subpopulations (r
22
23 11 $mean = 0.025 \pm 0.032$) were weak and lower than the average r of all populations (r
24
25 12 $mean = 0.075 \pm 0.010$), just like POP1 r ($r = 0.080 \pm 0.129$) and POP2 r ($r = 0.075 \pm 0.124$).
26
27
28
29
30
31

32 14 In contrast to the results of BAPS, analysis with STRUCTURE revealed no evidence of cryptic
33
34 15 genetic structure in three to five populations. Exceptions to this pattern was POP1 and POP2,
35
36 16 wherein STRUCTURE identified the presence of two subpopulations.
37
38
39
40
41

42 18 MtDNA D-loop
43
44
45

46 20 Sequence characterization and allelic diversity

47 21 The first hypervariable segment (HVI) of the mitochondrial DNA (mtDNA) control region
48
49 22 (D-loop) was amplified for 61 bats. Sequence alignment spanning 359 bp revealed 12 mtDNA
50
51 23 D-loop haplotypes. POP6 showed the highest gene diversity ($H_s = 0.8636 \pm 0.0786$) followed by
52
53 24 POP5 and POP2. Nucleotide diversity was low for the overall population, POP2 showed the
54
55 25 highest ($\pi = 0.007428 \pm 0.004881$) followed by POP6 (Table 5).
56
57
58
59
60

1

2 Structuring

3 Strong and significant genetic differentiation was found within the overall population
 4 ($F_{st\text{mean}}=0.859$, $p<0.05$) except between POP1 and POP4, and POP2 and POP3 (Table 6). The
 5 haplotype network revealed two main groups of haplotypes (supp data, Figure s1). The first
 6 includes seven haplotypes composed of all individuals from the Mexican population (POP6;
 7 H4–H10) with a maximum of two mutations between haplotypes. The second comprises two
 8 smaller groups, one with three haplotypes composed of all individuals from the Guianese
 9 populations (H1: POP2 and POP3; H2: POP1 and POP4; H3: POP2 and POP3), and the other with
 10 two haplotypes composed of all individuals from the Brazilian populations (POP5; H11 and
 11 H12) (Table 5). The highest number of mutations was found between the Mexican haplotype
 12 group and the Guianese/Brazilian groups with 48 mutations. Low sequence divergence was
 13 found between haplotypes from the same country ($\phi_{ST\text{mean FG}}=0.011\pm0.0073$; $\phi_{ST\text{mean BRZ}}=$
 14 0.008 ± 0.004 ; $\phi_{ST\text{mean MEX}}=0.007\pm0.003$) and was much higher between countries ($\phi_{ST\text{mean FG-}}$
 15 $\text{BRZ}=0.0372\pm0.008$; $\phi_{ST\text{mean FG-MEX}}=0.095\pm0.004$; $\phi_{ST\text{mean BRZ-MEX}}=0.095\pm0.005$).

16

17

18 DISCUSSION

19

20 In this study, the population structure and dynamics of *D. rotundus* was estimated at two
 21 spatial scales in Latin America from bi-parentally inherited nuclear microsatellites and
 22 maternally inherited mtDNA haplotypes. These data provide information on population
 23 history, dynamics and social structure, and are relevant to better assessing the role played by
 24 vampire bats as virus dispersers.

25

1
2
3
4
5
6
7
8
9
10
11
12
13
14
15
16
17
18
19
20
21
22
23
24
25
26
27
28
29
30
31
32
33
34
35
36
37
38
39
40
41
42
43
44
45
46
47
48
49
50
51
52
53
54
55
56
57
58
59
60

1 Phylogeographic structure

2

3 Nuclear and mitochondrial markers showed a significant population genetic structure at the

4 larger scale (French Guiana vs Mexico; North Brazil vs Mexico) and a lower structure at the

5 regional scale (between French Guianese populations; French Guiana vs North Brazil). This

6 trend was confirmed by structure analysis that showed an ancient isolation where Mexican

7 populations were represented in only two clusters (CLUS-B and D), which were not shared by

8 the Guianese or Brazilian populations. In contrast, the distance between the Brazilian and

9 Guianese populations was substantial but five times shorter and allowed gene sharing. Only

10 low sequence divergence ($\phi_{STmean} 0.009\pm0.002$) between haplotypes at the regional scale was

11 also noted, both suggesting that the vampire bat seems to be a highly mobile species able to

12 maintain gene flows over quite large distances. Divergence at the larger scale was higher

13 ($\phi_{STmean} 0.076\pm0.033$), but it is not unusual for haplotypes to be geographically isolated

14 (McCracken et al., 1994). Moreover, nuclear markers indicated a low differentiation at the

15 regional scale, showing the maintenance of recent gene flow. Additionally, the four ancestral

16 clusters (CLUS-A, -C, -E and -F) shared by populations from French Guiana and North Brazil

17 suggest long-term past exchanges between those populations, likely supporting the

18 connectivity of favorable habitat.

19 On the other hand, the genetic structure identified could be driven by both: (1) social

20 behaviors as shown by structuring discrepancy of nuDNA between females, for which the

21 four Guianese populations were significantly structured ($F_{STmean}=0.046$; $p<0.05$), and males,

22 for which the F_{ST} coefficients were very low and nonsignificant ($F_{STmean}=0.019$; $p>0.1$), except

23 between POP1 and POP2 ($F_{ST}=0.045$, $p<0.05$) like POP1 and POP3 ($F_{ST}=0.034$, $p<0.05$) and (2)

24 landscape history, which induced demography and gene flow changes. For instance, the

25 refuge theory (Haffer, 1969) suggests that contraction and subsequent expansion of forested

1 areas during the last glaciation cycles would have created allopatry between populations of
 2 the same forest-dwelling species, leading to intra specific differentiation, as has been shown
 3 in birds, reptiles, amphibians and mammals (Fouquet et al., 2012; Martins et al., 2009; Weir
 4 2006; Wuster et al. 2005). Expansion of savannas in the Guiana Shield (Pennington et al.,
 5 2000) during the Pleistocene could explain why Guianese populations, although near each
 6 other, may be composed of distinct ancestral stocks. Impacts of these past forest cover
 7 changes may have been either direct, limiting dispersal since the species is susceptible to
 8 forest fragmentation (Martins et al., 2009), or indirect, since vegetation changes also
 9 influenced distribution and abundance of prey.

10 Social genetic structure

11 Many factors related to history (e.g., dispersal ability and colonization processes, isolation in
 12 geographical refugia) and the biology of species (e.g. mating system, social structure) may act
 13 on genetic structure and differently affect the variability of biparental and maternal inherited
 14 genes (Chesser & Baker, 1996). The very low structure between POP1 (breeding) and POP4
 15 (feeding) just as POP2 (breeding) and POP3 (feeding), and even not significant for mtDNA,
 16 suggests that the population structure identified in caves (i.e., in roosts) is maintained in
 17 foraging areas, although those areas are close to each other and ecologically connected. This
 18 structuring between the two roosts is supported by individual marking: 68 females and 52
 19 males were identified in breeding cave 1, and 133 females and 33 males in breeding cave 2.
 20 After seven years of monitoring and nine capture sessions, no exchange was observed
 21 between the caves. This raises the question of a sort of territoriality of vampire bat with the
 22 use of exclusive foraging areas (Wilkinson 1985a, 1986). In other cases, the high
 23 differentiation detected in mtDNA differed strongly from the nuclear structure detected. This
 24 contrasted pattern has been found in many mammals, including bats (Arnold & Wilkinson,

1
2
3
4
5
6
7
8
9
10
11
12
13
14
15
16
17
18
19
20
21
22
23
24
25
26
27
28
29
30
31
32
33
34
35
36
37
38
39
40
41
42
43
44
45
46
47
48
49
50
51
52
53
54
55
56
57
58
59
60

1 2015; Castella et al., 2001; Kerth, 2000; Naidoo et al., 2016), suggesting female philopatry
2 and male-mediated gene flow. Individual marking and recapture also support this result: in
3 cave 1, 87% of recaptures (n=26) were females, 71% of recaptures (n=21) were females in
4 cave 2.

6 All the populations examined in this study showed deviations from HWE and a low but
7 significant inbreeding coefficient due to a heterozygote deficiency. Null allele, gene flow but
8 also genetic drift may affect allele frequencies, as in some mammals, reptiles and birds
9 (Durrant et al., 2009; Plot et al., 2012; Spurgin et al., 2014) Considering these last factors
10 vampire bats' social behaviors (Wilkinson 1984, 1985a, 1985b), and the fact that cryptic
11 social structure may lead to deviations from HWE (Sugg et al., 1996), it seems that present
12 deviations were likely caused by a Wahlund effect. The Wahlund effect (Wahlund, 1928) is
13 produced by a lack of consideration of substructure due to sampling or kin structure as shown
14 in mammals (Svoboda et al., 1985) and arthropods (Ravel et al., 2007 ;Dharmarajan et al.,
15 2011; Kempf et al., 2010).

17 In this study, the Wahlund effect was probably due to a hidden social structure for POP1 and
18 POP2 given that sampled individuals came from single breeding caves, contrary to four other
19 populations where individuals were sampled in multiple foraging areas. Some mammal
20 species living in social groups may have genetic and demographic consequences (Kerth & van
21 Schaik, 2012), often leading to low genetic diversity, which decreases long-term viability
22 (Hildner et al., 2003). Nevertheless, genetic diversity may be maintained despite sociality
23 (O'Donnell et al., 2016; Stiebens, 2013) as shown by present genetic diversity results
24 ($H_{s_{mean}}=0.688\pm0.047$), which are congruent with the analyses of Romero-Nava et al. (2014).

25

1 Considering this hidden structure characterized by several genetically distinct entities in each
 2 population (8–14 subpopulations), no inbreeding depression was detected in any population,
 3 consistent with Wilkinson (1985b), who observed that females avert some males to avoid
 4 inbreeding depression, showing random mating. Moreover, the genetic structure detected
 5 within populations (between POP1 subpopulations and between POP2 subpopulations) was
 6 significant, but this did not lead to high average levels of relatedness. The estimated mean
 7 relatedness in POP1 and POP2 subpopulations was very low and comparable to the mean
 8 relatedness calculated for the POP1 and POP2 populations. These results were also consistent with
 9 Wilkinson's estimates (1985b) whereby the low average degree of relatedness may be due to small
 10 litter size, high infant mortality, low adult mortality and possible transfer of females from one
 11 subpopulation to another. The presence of subpopulations with no inbreeding and low relatedness could
 12 be explained by vampire bat's social structure. The social structure is characterized by several
 13 groups of females, which may or may not be related, maintain a long-term association
 14 (Wilkinson,
 15 1985a), notably due to their long life span (Delpietro et al., 2017; Lord et al., 1976) and share a
 16 common set of diurnal roosts. Those associations may influence the mating system, as well as the
 17 genetic structure, and would appear sufficient to produce some genetic heterogeneity within
 18 populations (Wilkinson, 1985a). In this context, the question is what characterized these genetic entities
 19 detected if it was not only the kin structure.

20
 21 A common theoretical condition for social living implies that the overall benefits of group living
 22 outweigh the costs in terms of evolutionary fitness (Hamilton, 1964). In many mammals,
 23 relatedness was commonly used to estimate indirect fitness benefits, but despite a
 24 low level of relatedness, benefits may be still substantial (Kerth, 2002) and association
 25 patterns such as social interactions may occur (Hirsch et al. 2013; Strickland et al., 2014;

1
2
3
4
5
6
7
8
9
10
11
12
13
14
15
16
17
18
19
20
21
22
23
24
25
26
27
28
29
30
31
32
33
34
35
36
37
38
39
40
41
42
43
44
45
46
47
48
49
50
51
52
53
54
55
56
57
58
59
60

1 Briga et al., 2012). In *D. rotundus* social interactions such as allogrooming (Wilkinson, 1986) and
2 food sharing (Wilkinson, 1984) occur between adult females, related and unrelated, as between
3 females and young. Regurgitations of blood, likely based on reciprocal altruism (Carter &
4 Wilkinson, 2013, 2015; Wilkinson et al., 2016), are essential for the survival of the vampire bat,
5 which has to consume blood daily (McNab, 1973). To maximize inclusive fitness, reciprocal
6 food sharing should occur among close kin; however, sharing with non-kin promotes reciprocal
7 assistance by strengthening long-term social bonds (Carter & Wilkinson,
8 2015; Carter et al., 2017). However, food sharing cannot be explained solely by kin selection or
9 harassment (Carter & Wilkinson, 2013). The theory of group selection claimed that the natural
10 selection does not act only at the level of the individual but also at the level of the group and is based
11 on the idea that the behavior of animals could affect their survival and reproduction and therefore
12 their fitness (Darwin, 1871; Wynne-Edwards 1962; Maynard-Smith, 1964;). This question has
13 been debated (Wade et al., 2010; Marshall, 2011; Van Veelen et al., 2012; Simon et al., 2012)
14 although some evidence was provided, especially about effects of group phenotype on group
15 fitness (Pruitt & Goodnight, 2014; Pruitt et al.,
16 2017). Considering the present results on the significant substructures in POP1 and POP2 and their low
17 level of relatedness, like Wilkinson & Carter's observations and experiments mentioned
18 above, the group selection hypothesis, added to kin selection, seems to be relevant to explain the
19 distinct genetically entities (i.e., subpopulations) detected in this study.

20

21 Virus spread

22 The population dynamics of parasites are influenced by both abiotic and biotic factors, and are
23 highly dependent on the host's history and host spatiotemporal dynamics (Barrett et al., 2008;
24 van Schaik & Kerk, 2016). In mammals, males typically distribute themselves according to
25 the presence of females, whereas female dispersion reflects the patchiness of resources and

the importance of sociality (Arnaud et al, 2012; Clutton-Brock, 1989; Wilkinson 1985a, 1985b, 1988). In polygynous taxa, males tend to disperse more to avoid inbreeding and/or competition, while females are more philopatric (Greenwood, 1980; McCracken & Wilkinson, 2000). Those drivers of host dynamics have important impacts for virus dispersal (Delpietro et al., 2017). *D. rotundus* is the most important reservoir of rabies virus in Latin America (Schneider et al., 2009), and lessons from the genetic structure and population dynamics described above have potential implications for virus dispersal.

Our data suggested the gene flow would be sufficient to maintain virus circulation over a long distance at the regional scale. This high capability of males to disperse may explain the wide circulation of the lineage II of rabies virus detected in French Guiana (Lavergne et al., 2016) and circulating in northern Amazonia, without evidence of strong geographic structure signal (Condori-Condori et al., 2013). In foraging areas often visited by females, males could potentially spread rabies virus at a more local scale, in spite of gene flow restriction by natal philopatry, and female social behaviors may favor the rapid spread of the virus within social groups to related and unrelated offspring and adult females (Kobayashi et al., 2005; Velasco-Villa et al., 2006). In other social species, for example the *Mandrillus sphinx* monkey, maternal kinship was also identified as a driver of simian immunodeficiency viruses (Fouchet et al., 2012). In the case of rabies dispersal, sociality and trophallaxis should favor quick dispersal of the virus within subpopulations once introduced in the roosts. This behavior explains the equally distributed anti-rabies serologies observed within subpopulations as well as in adults and offspring (de Thoisy et al., 2016; unpub. data). This role of both genders in virus circulation is highlighted by comparable seropositivity in adult males and females, although social interactions in large roosts such as caves may favor virus transmission (37%

1
2
3
4
5
6
7
8
9
10
11
12
13
14
15
16
17
18
19
20
21
22
23
24
25
26
27
28
29
30
31
32
33
34
35
36
37
38
39
40
41
42
43
44
45
46
47
48
49
50
51
52
53
54
55
56
57
58
59
60

1 and 55% of animals were seropositive in cave 1 and cave 2, respectively, vs 23% at feeding
2 sites).

3
4 Last, transmission of rabies virus is also favored by nonsocial factors. High vampire bat
5 density and this bat's concentration around cattle may favor increased interactions between
6 animals (de Thoisy et al., 2016). However, studies have shown an effect of livestock in
7 favoring population expansion (Lima Ulbierta et al., 2017), reducing depredation on human
8 beings (Gilbert et al., 2012; Streicker et al., 2016), contrary to extirpation of wildlife by
9 hunting or deforestation, which could increase feeding on humans (Schneider et al., 2009;
10 Stoner-Duncan et al., 2014).

11
12 Conclusions

13
14 This study investigated how fine-scale genetic signatures are influenced by the sociality of
15 one of the most complex social systems reported in any bat species, which also acts as the
16 main reservoir of one of the deadliest viruses. We infer that the social structure of the vampire
17 bat affected the intra- and inter-population genetic structure and potentially virus
18 transmission. At large scale, restricted gene flow was evidenced, but further work with better sample
19 coverage, including the Guiana Shield and/or the southern region, is required to estimate the
20 dispersal potential of *D. rotundus* and of viruses they host. At regional scale, a contrasted
21 pattern between nuclear-inherited genes and mtDNA-inherited genes suggests a male-
22 mediated gene flow and female philopatry. Physiologic demand such as blood feeding is
23 probably the cause of social behavior and of the long-term association between females,
24 which have contributed to spreading the rabies virus within the group and population.
25 Subpopulations and potential social groups were revealed in roosting sites with no inbreeding

depression, high genetic diversity and a low degree of relatedness, which corroborates observations of Wilkinson (1985) and suggest that both kin and group selection shape the social structure of vampires. The possibility of gene connectivity should be considered for decision-making on vampire-bat-transmitted rabies control because some strategies such as culling could induce the immigration of bats from neighboring colonies to fill vacant roost space (Streicker et al., 2012, 2016). These artificially induced dynamics may be associated with the dispersal of the virus, including possible (re)introduction of strains. Therefore, controls should probably be geographically coordinated (Blackwood et al., 2013), unless they fail to achieve the outcomes required by the principles for ethical wildlife control (Dubois et al., 2017).

Acknowledgments

All field volunteers and owners and/or managers of capture sites are warmly acknowledged for their assistance in captures. This study was conducted within CAROLIA, RESERVOIRS and INDIGEN programs supported by European (ERDF/FEDER) funds and assistance from Collectivité Territoriale de la Guyane and Direction Régionale pour la Recherche et la Technologie, "Investissement d'Avenir" grants managed by the Agence Nationale de la Recherche (CEBA, Ref. ANR-10- LABEX-25-01), and the project "Guyamazon II" funded by Ambassade de France in Brazil, IRD/AIRD (France), the French Guianan Region, CIRAD, FAPEAM, FAPEMA, and FAPEAP; and an European Commission "REGPOT-CT-2011-285837-STRonGer" grant within the FP7. In compliance with Advantages and Benefits Sharing policy in French Guiana, samples are kept in the tissue collection JAGUARS (<http://kwata.net/la-collection-jaguars-pour-l-etude-de-la-biodiversite.html>; CITES reference: FR973A) supported by Kwata NGO, Institut Pasteur de la Guyane, DEAL Guyane, and Collectivité Territoriale de la Guyane.

1
2
3
4
5
6
7
8
9
10
11
12
13
14
15
16
17
18
19
20
21
22
23
24
25
26
27
28
29
30
31
32
33
34
35
36
37
38
39
40
41
42
43
44
45
46
47
48
49
50
51
52
53
54
55
56
57
58
59
60

1 1 References

2

3 3 Arnaud CM, Dobson FS & Murie JO (2012). Philopatry and within-colony movements in
4 4 Columbian ground squirrels. *Mol Ecol* 21:493-504.

5

6 6 Arnold BD & Wilkinson GS (2015). Female natal philopatry and gene flow between
7 7 divergent clades of pallid bats (*Antrozous pallidus*). *J Mammal* 96:531-540.

8

9 9 Axelrod R & Hamilton WD (1981). The evolution of cooperation. *Science* 211:1390-1396.

10

11 11 Bandelt HJ, Forster P & Röhl A (1999). Median-joining networks for inferring intraspecific
12 12 phylogenies. *Mol Biol Evol* 16:37-48.

13

14 14 Barrett LG, Thrall PH, Burdon JJ & Linde CC (2008). Life history determines genetic
15 15 structure and evolutionary potential of host-parasite interactions. *Trends Ecol Evol* 23:678-
16 16 685.

17

18 18 Bardeleben C, Campbell P, Lara M & Moore RL (2007). Isolation of polymorphic
19 19 tetranucleotide microsatellite markers for the silky short-tailed bat *Carollia brevicauda*. *Mol*
20 20 *Ecol* 7:63-65.

21

22 22 Belkhir K, Borsa P, Chikhi L, Raufaste N & Bonhomme F (2004). GENETIX 4.05, logiciel
23 23 sous Windows TM pour la génétique des populations. Laboratoire Génome, Populations,
24 24 Interactions, CNRS UMR 5000, université de Montpellier II, Montpellier (France).

25

- 1 Blackwood JC, Streicker DG, Altizer S & Rohani P (2013). Resolving the roles of immunity,
2 pathogenesis, and immigration for rabies persistence in vampire bats. PNAS 100:20837-
3 20842.
4
5 Borisenko AV, Lim BK, Ivanova NV, Hanner RH & Hebert PDN (2008). DNA barcoding in
6 surveys of small mammal communities: a field study in Suriname. Mol Ecol 8:471-479.
7
8 Briga M, Pen I & Wright J (2012). Care for kin: within-group relatedness and allomaternal
9 care are positively correlated and conserved throughout the mammalian phylogeny. Biol Lett
10 8:533-536.
11
12 Carter GG & Wilkinson GS (2013). Food sharing in vampire bats: reciprocal help predicts
13 donations more than relatedness or harassment. Proc Roy Soc Lond B 280: 20122573.
14
15 Carter GG & Wilkinson GS (2015). Social benefits of non-kin food sharing by female
16 vampire bats. Proc Roy Soc Lond B 282:20152524.
17
18 Castella V, Ruedi M & Excoffier L (2001). Contrasted patterns of mitochondrial and nuclear
19 structure among nursery colonies of the bat *Myotis myotis*. Evol Biol 14:708-720.
20
21 Chesser RK & Baker R J (1996). Effective sizes and dynamics of uniparentally and
22 diparentally inherited genes. Genetics 144:1225-1235.
23
24 Clutton-Brock TH (1989) Mammalian mating systems. P Roy Soc Lond B 236:339-372.
25

1
2
3 1 Condori-Condori RE, Streicker DG, Cabezas-Sanchez C & Velasco-Villa A (2013). Enzootic
4
5 2 and epizootic rabies associated with vampire bats, Peru. *Emerg Infect Dis* 19:1463-1469.
6
7 3
8
9 4 Corander J, Waldmann P, Marttinen P & Sillanpää MJ (2004). BAPS 2: enhanced
10
11 5 possibilities for the analysis of genetic population structure. *Bioinformatics* 20:2363-2369.
12
13 6
14
15 7 Cornuet JM & Luikart G (1996). Description and power analysis of two tests for detecting
16
17 8 recent population bottlenecks from allele frequency data. *Genetics* 144:2001-2014.
18
19 9
20
21
22 10 Dabrowski M J, Pilot M, Kruczyk M, Żmihorski M, Umer HM & Gliwicz J (2014).
23
24 11 Reliability assessment of null allele detection: inconsistencies between and within different
25
26 12 methods. *Mol Ecol Res* 14:361-373.
27
28 13
29
30 14 Darwin C (1871). *The descent of man, and selection in relation to sex*. Appleton and
31
32 15 Company, New York.
33
34 16
35
36 17 de Almeida MF, Martorelli LFA, Sodré MM, Katakoaka PAG & de Rosa AR (2011). Rabies
37
38 18 diagnosis and serology in bats from the State of São Paulo, Brazil. *Rev Soc Bras Med Trop*.
39
40 19 44:140-145.
41
42 20
43
44 21 De Meeûs T (2012). *Initiation à la génétique des populations naturelles : application aux*
45
46 22 *parasites et à leurs vecteurs*. IRD éditions. 338pp.
47
48 23
49
50
51
52
53
54
55
56
57
58
59
60

- 1 de Thoisy B, Bourhy H, Delaval M, Pontier D, Dacheux L, Darcissac E, et al. (2016).
2 Bioecological drivers of Rabies Virus circulation in a neotropical bat community. PLoS Negl
3 Trop Dis 10:e0004378.
4
5 Delpietro HA, Russo RG, Carter GG, Lord RD & Delpietro GL (2017). Reproductive
6 seasonality, sex ratio and philopatry in Argentina's common vampire bats. R Soc Open Sci
7 4:160959.
8
9 Di Rienzo A, Peterson A, Garza JC, Valdes AM, Slatkin M, & Freimer NB (1994).
10 Mutational processes of simple-sequence repeat loci in human populations. P Natl Acad Sci
11 USA 91:3166-3170
12
13 Dharmarajan G, Beasley JC & Rhodes Jr OE (2011). Heterozygote deficiencies in parasite
14 populations: an evaluation of interrelated hypotheses in the raccoon tick, *Ixodes texanus*.
15 Heredity 106:253-260.
16
17 Dubois S, Fenwick N, Ryan EA, Baker L, Baker SE, Beausoleil NJ, Carter S, Cartwright B,
18 Costa F, Draper C & J Griffin (2017) International consensus principles for ethical wildlife
19 control. Conservation Biology DOI: 10.1111/cobi.12896
20
21 Durrant CJ, Beebee T, Greenaway F & Hill DA (2009). Evidence of recent population
22 bottlenecks and inbreeding in British populations of Bechstein's bat, *Myotis bechsteinii*.
23 Conserv Gen 10:489-496.
24

1
2
3
4
5
6
7
8
9
10
11
12
13
14
15
16
17
18
19
20
21
22
23
24
25
26
27
28
29
30
31
32
33
34
35
36
37
38
39
40
41
42
43
44
45
46
47
48
49
50
51
52
53
54
55
56
57
58
59
60

1 Earl DA (2012) STRUCTURE HARVESTER: a website and program for visualizing
2 STRUCTURE output and implementing the Evanno method. Conservation Genetics
3 Resources 4:359-361.
4
5 Escobar LE, Peterson AT, Favi M, Yung V & Medina-Vogel G (2015). Bat-borne rabies in
6 Latin America. Rev Inst Med Trop Sao Paulo 57:63-72.
7
8 Evanno G, Regnaut S & J Goudet (2005) Detecting the number of clusters of individuals
9 using the software STRUCTURE: a simulation study. Molecular Ecology 14:2611-2620.
10
11 Excoffier L, Smouse P & Quattro JM (1992). Analysis of molecular variance inferred from
12 metric distances among DNA haplotypes: application to human mitochondrial DNA
13 restriction data. Genetics 131:479-491.
14
15 Fenton MB (1997). Science and the conservation of bats. J Mammal 78:1-14.
16
17 Fouchet D, Verrier D, Ngoubangoye B, Souquière S, Makuwa M, Kazanji M, Gonzalez JP &
18 Pontier D (2012). Natural simian immunodeficiency virus transmission in mandrills: a family
19 affair? Proc Roy Soc Lond B 279:3426-3435.
20
21 Fouquet A, Noonan BP, Rodrigues MT, Pech N, Gilles A & Gemmell NJ (2012). Multiple
22 quaternary refugia in the eastern Guiana shield revealed by comparative phylogeography of
23 12 frog species. Syst Biol 61:461-489.
24

- 1 Gilbert AT., BW Petersen, S Recuenco, M Niezgoda, J Gómez, VA Laguna-Torres & C
2 Rupprecht (2012). Evidence of rabies virus exposure among humans in the Peruvian Amazon.
3 Am J Trop Med Hyg 87: 206-215.
4
5 Greenhall AM, Joermann G & Schmidt U (1983). *Desmodus rotundus*. Mamm Species 202:1-
6 6.
7
8 Greenwood PJ (1980). Mating systems, philopatry and dispersal in birds and mammals. Anim
9 Behav 28:1140-1162.
10
11 Haffer J (1969). Speciation in Amazonian forest birds. Science 165:131-137.
12
13 Hamilton WD (1964). The genetical evolution of social behaviour. J Theor Biol 7:1-52
14
15 Hildner KK, Soule ME, Min MS & Foran DR (2003). The relationship between genetic
16 variability and growth rate among populations of the pocket gopher, *Thomomys bottae*.
17 Conserv Genet 4:233-240
18
19 Hirsch BT, Prange S, Hauver SA & Gehrt SD (2013). Genetic relatedness does not predict
20 racoon social network structure. Anim Behav 85:463-470.
21
22 Hoogland JL (1992). Levels of inbreeding among prairie dogs. Am Nat 139:591-602
23

1
2
3 1 Huth-Schwarz A, Leon A, Ame RV, Moritz A & Kraus FB (2011). Mating frequency &
4
5 2 genetic colony structure of the neotropical bulble bee *Bombus wilmattae* (Hymenoptera:
6
7 3 Apidae). *Apidologie* 42:519-525.
8
9 4
10
11 5 Jombart T (2008). Adegnet: R package for the multivariate analysis of genetic markers.
12
13 6 *Bioinformatics* 24:403-1405
14
15 7
16
17
18 8 Jombart T & Ahmed I (2011). Adegnet 1.3-1: new tools for the analysis of genome-wide
19
20 9 SNP data. *Bioinformatics* 27:3070-3071
21
22 10
23
24
25 11 Kalinowski ST, Wagner AP & Taper ML (2006). ML-Relate: a computer program for
26
27 12 maximum likelihood estimation of relatedness and relationship. *Mol Ecol* 6:576-579.
28
29 13
30
31
32 14 Kempf F, McCoy K & De Meeûs T (2010). Wahlund effects and sex-biased dispersal in
33
34 15 *Ixodes ricinus*, the European vector of Lyme borreliosis: new tools for old data. *Infect Gen*
35
36 16 *Evol* 10:989-997.
37
38 17
39
40
41 18 Kerth G, Mayer F & König B (2000). MtDNA reveals that female Bechstein's bats live in
42
43 19 closed societies. *Mol Ecol* 9:793–800
44
45 20
46
47 21 Kerth G, Mayer F & Petit E (2002). Extreme sex-biased dispersal in the communally
48
49 22 breeding, nonmigratory Bechstein's bat (*Myotis bechsteinii*). *Mol Ecol* 11:1491–1498
50
51 23
52
53
54 24 Kerth G & Van Schaik J (2012). Causes and consequences of living in closed societies:
55
56 25 lessons from a long-term socio-genetic study on Bechstein's bats. *Mol Ecol* 21:633-646
57
58
59
60

- 1
- 2
- 3 1
- 4
- 5 2 Kobayashi Y, Sato G, Shoji Y, Sato T, Itou T, Cunha EMS, Samara SI, Carvalho AAB, Nociti
- 6
- 7 3 DP, Ito FH & Sakai T (2005). Molecular epidemiological analysis of bat rabies viruses in
- 8
- 9 4 Brazil. J Med Vet Sci 67:647- 652.
- 10
- 11 5
- 12
- 13
- 14 6 Kunz TH, Braun de Torrez E, Bauer D, Lobova T & Fleming TH (2011). Ecosystem services
- 15
- 16 7 provided by bats. Ann NY Acad Sci.1223:1-38.
- 17
- 18 8
- 19
- 20
- 21 9 Latch EK, Dharmarajan G, Glaubitz JC & Rhodes Jr OE (2006). Relative performance of
- 22
- 23 10 Bayesian clustering software for inferring population substructure and individual assignment
- 24
- 25 11 at low levels of population differentiation. Conserv Genet 7:295–302.
- 26
- 27 12
- 28
- 29
- 30 13 Lecompte E, Bouanani MA, de Thoisy B, Crouau-Roy B (2017). How do rivers, geographic
- 31
- 32 14 distance, and dispersal behavior influence genetic structure in two sympatric New World
- 33
- 34 15 monkeys ? Am J Primatol 10.1002/ajp.22660
- 35
- 36 16
- 37
- 38 17 Lima Ulbierta G, Sances de Siqueira TY & Graciolli G (2017). White-winged vampire bat,
- 39
- 40 18 *Diaemus youngi*, (Jentink, 1893) (Mammalia, Chiroptera): range extension in the Cerrado
- 41
- 42 19 biome and new locality in Mato Grosso do Sul, southwestern Brazil. Check List 13:2128.
- 43
- 44
- 45 20
- 46
- 47 21 Lord RD, Muradali F & Lazaro L (1976). Age composition of vampire (*Desmodus rotundus*)
- 48
- 49 22 bats in the northern Argentina & southern Brazil. J Mamm 57:573-575.
- 50
- 51 23
- 52
- 53
- 54 24 Marshall JAR (2011). Group selection and kin selection: formally equivalent approaches.
- 55
- 56 25 Trends Ecol Evol 26:325-332.
- 57
- 58
- 59
- 60

1
2
3 1
4
5 2 Martins FM, Templeton AR, Pavan AC, Kohlbach BC & Morgante JS (2009).
6
7 3 Phylogeography of the common vampire bat (*Desmodus rotundus*): marked population
8
9 4 structure, Neotropical Pleistocene vicariance and incongruence between nuclear and mtDNA
10
11 5 markers. BMC Evol Biol 9:294
12
13 6
14
15
16 7 Maynard-Smith JM (1964). Group selection and kin selection. Nature 201:1145-1147.
17
18 8
19
20 9 McCracken GF, McCracken MK & Vawter AT (1994). Genetic structure in migratory
21
22 10 populations of the bat *Tadarida brasiliensis mexicana*. J Mammal 75:500-510
23
24
25 11
26
27 12 McCracken GF & Wilkinson GS (2000). Bat mating systems. Reproductive biology of bats,
28
29 13 pp321-362.
30
31
32 14
33
34 15 McCulloch ES (2012). Environmental & landscape determinants of population genetic
35
36 16 structure & diversity of the great fruit-eating bat, *Artibeus lituratus*, in atlantic forest remnants
37
38 17 in South America. Doctoral dissertation, Faculty of the Louisiana State & University and
39
40 18 Agricultural and Mechanical College.
41
42
43 19
44
45 20 McNab BK (1973). Energetics and the distribution of vampires. J Mammal 54:131-144.
46
47 21
48
49 22 Miller-Butterworth CM, Vonhof MJ, Rosenstern J, Turner GG & Russell AL (2014). Genetic
50
51 23 structure of Little Brown Bats (*Myotis lucifugus*) corresponds with spread of White-Nose
52
53 24 Syndrome among *Hibernacula*. J Hered 105:354-364.
54
55 25
56
57
58
59
60

- 1
2
3 1 Milligan BG (2003). Maximum-likelihood estimation of relatedness. *Genetics* 163:1153-
4 1167.
5
6
7 3
8
9
10 4 Moussy C, Hosken DJ, Mathews F, Smith GC, Aegerter JN & Bearhop S (2013). Migration
11 and dispersal patterns of bats and their influence on genetic structure. *Mammal Rev* 43:183-
12 195
13
14
15
16 7
17
18 8 Naidoo T, Schoeman MC, Goodman SM, Taylor PJ & Lamb JM (2016). Discordance
19 between mitochondrial and nuclear genetic structure in the bat *Chaerephon pumilus*
20 (Chiroptera: Molossidae) from southern Africa. *Mamm Biol* 81:115-122.
21
22
23
24
25 11
26
27 12 O'Donnell CF, Richter S, Dool S, Monks JM & Kerth G (2016). Genetic diversity is
28 maintained in the endangered New Zealand long-tailed bat (*Chalinolobus tuberculatus*)
29 despite a closed social structure and regular population crashes. *Conserv Gen* 17:91-102.
30
31
32
33
34 15
35
36 16 O'Shea TJ, Cryan PM, Cunningham AA, Fooks AR, Hayman DTS, Luis AD, Peel AJ,
37 Plowright RK & Wood JLN (2014). Bat flight & zoonotic viruses. *Emerg Infect Dis* 20:741-
38 745.
39
40
41
42
43 19
44
45 20 Piaggio A, Johnston JJ & Perkins SL (2008). Development of polymorphic microsatellite loci
46 for the common vampire bat, *Desmodus rotundus* (Chiroptera: Phyllostomidae). *Mol Ecol*
47 8:440-442.
48
49
50
51 23
52
53
54 24 Plot V, de Thoisy B, Blanc S, Kelle L, Lavergne A, Bérubet HR & Georges JY (2012).
55 Reproductive synchrony in a recovering bottlenecked sea turtle population. *J Anim Ecol*
56
57
58
59
60

1
2
3 1 81:341-351.
4
5 2
6
7 3 Pritchard JK, Stephens M & Donnelly PJ (2000). Inference of population structure using
8
9 4 multilocus genotype data. Genetics 155:945-959.
10
11 5
12
13 6 Pruitt J N & Goodnight CJ (2014). Site-specific group selection drives locally adapted group
14
15 7 compositions. Nature 514:359-362.
16
17 8
18
19 9 Pruitt JN, Goodnight CJ & Riechert SE (2017). Intense group selection selects for ideal group
20
21 10 compositions, but selection within groups maintains them. Anim Behaviour 124:15-24.
22
23 11
24
25 12 R Development Core Team (2008). R: A language and environment for statistical computing.
26
27 13 R Foundation for Statistical Computing, Vienna, Austria. ISBN 3-900051-07-0, URL
28
29 14 <http://www.R-project.org>
30
31 15
32
33 16 Ravel S, T Meeûs De, Dujardin JP, Zézé DG, Gooding RH, Dusfour I, Sané B, Cuny G &
34
35 17 Solano P (2007). The tsetse fly *Glossina palpalis palpalis* is composed of several genetically
36
37 18 differentiated small populations in the sleeping sickness focus of Bonon, Côte d'Ivoire. Infect
38
39 19 Genet Evol 16:116-125.
40
41 20
42
43 21 Raymond M & Rousset F (1995). GENEPOP (version 1.2): population genetics software for
44
45 22 exact tests and ecumenicism. J. Heredity 86:248-249
46
47 23
48
49 24 Reddrop C, Moldrich RX, Beart PM, Farso M, Liberatore GT, Howells DW, Peterson KU,
50
51 25 Schleuning WD & Medcalf RL (2005). Vampire bat salivary plasminogenactivator
52
53
54
55
56
57
58
59
60

- 1 (Desmotepase) inhibits tissue-type plasminogenactivator-induced potentiation of excitotoxic
injury. *Stroke* 36:1241-1246
- 2
- 3
- 4 Rice WR (1989) Analyzing tables of statistical test. *Evolution* 43:223-225
- 5
- 6 Romero-Nava C, Leon-Paniagua L & Ortega J (2013). Microsatellites loci reveal
heterozygosis and population structure in vampire bats (*Desmodus rotundus*) (Chiroptera:
Phyllostomidae) of Mexico. *Biol Trop* 62:659-669
- 9
- 10 Rossiter SJ, Zubaid A, Mohd-Adnan A, Struebig MJ, Kunz TH, Gopal S, Petit EJ & Kingston
T (2012). Social organization and genetic structure: insights from codistributed bat
populations. *Mol Ecol* 21:647-661.
- 13
- 14 Rousset F & Raymond M (1995). Testing heterozygote excess and deficiency. *Genetics*
140:1413-1419.
- 16
- 17 Rozas J. & Rozas R. (1995). DnaSP, DNA sequence polymorphism: an interactive program
for estimating Population Genetics parameters from DNA sequence data. *Comput. Applic.*
Biosci. 11:621-625.
- 20
- 21 Rozas J. (2009). DNA Sequence Polymorphism Analysis using DnaSP. Pp. 337-350. In
Posada, D. (ed.) *Bioinformatics for DNA Sequence Analysis; Methods in Molecular Biology*
Series Vol. 537. Humana Press, NJ, USA.
- 24

1
2
3
4
5
6
7
8
9
10
11
12
13
14
15
16
17
18
19
20
21
22
23
24
25
26
27
28
29
30
31
32
33
34
35
36
37
38
39
40
41
42
43
44
45
46
47
48
49
50
51
52
53
54
55
56
57
58
59
60

1 Salmón-Mulanovich G, Vásquez A, Albújar C, Guevara C, Laguna-Torres VA, M Salazar,
2 Zamalloa H, Caceres M, Gomez-Benavides J, Pacheco V, Contreras C, Kochel T, Niezgoda
3 M, Jackson FR, Velasco-Villa A, Rupprecht C & Montgomery JM (2007). Human rabies and
4 rabies in vampire and non-vampire bat species, Southeastern Peru. *Emerg Infect Dis* 15:1308-
5 1310.
6
7 Schneider MC, Romijn PC, Uieda W, Tamayo H, da Silva DF, Belotto A, da Silva JB &
8 Leanes LF (2009) Rabies transmitted by vampire bats to humans: an emerging zoonotic
9 disease in Latin America? *Rev Panam Salud Publ* 25:260- 269.
10
11 Selkoe KA & Toonen RJ (2006). Microsatellites for ecologists: a practical guide to using &
12 evaluating microsatellite markers. *Ecol Lett* 9:615-629.
13
14 Sikes RS & Gannon WL (2011). Guidelines of the American Society of Mammalogists for the
15 use of wild mammals in research. *J Mammal* 92:235- 253.
16
17 Spurgin LG, Illera JC, Jorgensen TH, Dawson DA & Richardson DS (2014). Genetic and
18 phenotypic divergence in an island bird: isolation by distance, by colonization or by
19 adaptation? *Mol Ecol* 23:1028-1039.
20
21 Stiebens VA, Merino SE, Roder C, Chain FJ, Lee PL & Eizaguirre C (2013). Living on the
22 edge: how philopatry maintains adaptive potential. *Proc Roy Soc Lond B* 280:20130305.
23
24 Stoner-Duncan B, Streicker DG & Tedeschi CM (2014). Vampire bats and rabies: toward an
25 ecological solution to a public health problem. *PLoS Negl Trop Dis* 8:e2867.

- 1
2
3 1
4
5 2 Streicker DG, Recuenco S, Valderrama W, Gomez Benavides J, Vargas I, Pacheco V,
6
7 3 Condori-Condori RE, Montgomery J, Rupprecht CE, Rohani P & Altizer S (2012). Ecological
8
9 4 and anthropogenic drivers of rabies exposure in vampire bats: implications for transmission
10
11 5 and control. *Proc Biol Sci* 279:3384–3392.
12
13 6
14
15
16 7 Streicker DG, Winternitz JC, Satterfield DA, Condori-Condori RE, Broos A, Tello C,
17
18 8 Recuenco S, Velasco-Villa A, Altizer S & Valderrama W (2016). Host–pathogen
19
20 9 evolutionary signatures reveal dynamics and future invasions of vampire bat rabies. *Proc Nat*
21
22 10 *Acad Sci* 113:10926-10931.
23
24
25 11
26
27 12 Strickland K, Gardiner R, Schultz AJ & Frere CH (2014). The social life of eastern water
28
29 13 dragons: sex differences, spatial overlap and genetic relatedness. *Anim Behav* 97:53-61.
30
31 14
32
33
34 15 Sodré MM, da Gama AR, de Almeida MF (2010). Updated list of bat species positive for
35
36 16 rabies in Brazil. *Rev Inst Med Trop Sao Paulo* 52:75-81.
37
38 17
39
40
41 18 Sugg DW, Chesser RK, Dobson FS, Hoogland JL (1996). Population genetics meets
42
43 19 behavioral ecology. *Trends Ecol Evol* 11:338–342.
44
45 20
46
47 21 Svoboda PL, Choate JR & Chesser RK (1985). Genetic relationships among southwestern
48
49 22 populations of the Brazilian free-tailed bat. *J Mammal* 66:444-450.
50
51 23
52
53
54 24 Tamura KG, Stecher G, Peterson D, Filipowski A & Kumar S (2013). MEGA6: Molecular
55
56 25 Evolutionary Genetics Analysis version 6.0. *Mol Biol Evol* 30:2725-2729.
57
58
59
60

1
2
3 1
4
5 2 Torres FD, Valenca C, Filho R (2005). First record of *Desmodus rotundus* in urban area from
6
7 3 the city of Olinda, Pernambuco, Northeastern Brazil: a case report. *Inst Med Trop.* 47:107-
8
9 4 108.
10
11 5
12
13 6 Trajano E (1996). Movements of cave bats in sousetheastern Brazil, with emphasis on the
14
15 7 population ecology of the common vampire bat, *Desmodus rotundus* (Chiroptera). *Biotropica*,
16
17 8 28:121-129.
18
19 9
20
21
22 10 Trinca CS, de Thoisy B, Rosas FCW, Waldemarin HP, Koepfli KP, Vianna JA & Eizirik E
23
24 11 (2012). Phylogeography and demographic history of the Neotropical otter (*Lontra*
25
26 12 *longicaudis*). *J Heredity* 103:479–492.
27
28 13
29
30 14 Trivers RL (1971). The evolution of reciprocal altruism. *Q Rev Biol* 46:35-57
31
32 15
33
34 16 van Oosterhout C, Hutchinson WF, Wills DPM & Shipley P (2004). MICROCHECKER :
35
36 17 Software for identifying & correcting genotyping errors in microsatellite data. *Mol Ecol*
37
38 18 4:535-538.
39
40 19
41
42 20 van Veelen M, Garcia J, Sabelis MW & Egas M (2012). Group selection and inclusive fitness
43
44 21 are not equivalent; the Price equation vs. models and statistics. *J. Theor. Biol.* 299:64-80
45
46 22
47
48 23 Velasco-Villa A, Orciari LA, Juarez-Islas V, Gómez-Sierra M, Padilla-Medina I, Flisser A,
49
50 24 Souza V, Castillo A, Franka R, Escalante-Mañe M, Sauri-González I, Rupprecht CE (2006).
51
52
53
54
55
56
57
58
59
60

- 1 Molecular diversity of rabies viruses associated with bats in Mexico and other countries of the
2 Americas. J Clin Microbiol 44:1697-1710.
- 3
- 4 Voigt CC & Kelm DH (2006). Host preference of the common vampire bat (*Desmodus*
5 *rotundus*; Chiroptera) assessed by stable isotopes. J Mammal 87:1-6.
- 6 .
- 7 Wahlund S (1928). Zusammensetzung von Populationen und Korrelationserscheinungen von
8 Standpunkt der Vererbungslehre aus betrachtet. Hereditas 11:65-108
- 9
- 10 Wade MJ, Bijma P, Ellen ED & Muir W (2010). Group selection and social evolution in
11 domesticated animals. Evol Appl 3:453-465
- 12
- 13 Weir BS & Cockerham CC (1984). Estimating F-statistics for the analysis of population
14 structure. Evolution 38:1358–1370.
- 15
- 16 Weir JT (2006). Divergent patterns of species accumulation in lowland and highland
17 Neotropical birds. Evolution 60:842-855.
- 18
- 19 Wilkinson GS (1984). Reciprocal food sharing in the vampire bats. Nature 308:181-184.
- 20 Wilkinson GS (1985a) The social organization of the common vampire bat. I. Pattern and
21 cause of Association. Behav Ecol Sociobiol 17:111-121.
- 22
- 23 Wilkinson GS (1985b). The social organization of the common vampire bat. II. Mating
24 system, genetic structure, and relatedness. Behav Ecol Sociobiol 17:123-134.
- 25

1
2
3 1 Wilkinson GS (1986). Social grooming in the common vampire bat, *Desmodus rotundus*.
4
5 2 *Anim Behav* 34: 1880-1889.
6
7 3
8
9 4 Wilkinson GS (1988). Natural History of Vampire Bats. pp86-96
10
11 5
12
13 6 Wilkinson GS, Carter GG, Bohn KM & Adams DM (2016). Nonkin cooperation in bats. *Phil*
14
15 7 *Trans R Soc B* 371:20150095.
16
17 8
18
19 9 Wimsatt WA & H Trapido (2005). Reproduction & the female reproductive cycle in the
20
21 10 tropical American vampire bat, *Desmodus rotundus murinus*. *Am J anat* 91:415-445
22
23 11
24
25 12 Wright S (1969). Evolution and genetics of populations. Volume 2. The theory of gene
26
27 13 frequencies. Univ Chicago Press, Chicago
28
29 14
30
31 15 Wuster W, Ferguson JE, Quijada-Mascareñas JA, Pook CE, Salomao MD & Thorpe RS
32
33 16 (2005). Tracing an invasion: land bridges, refugia, and the phylogeography of the Neotropical
34
35 17 rattlesnake (Serpentes: Viperidae: *Crotalus durissus*). *Mol Ecol* 14:1095-1108.
36
37 18
38
39 19 Wynne-Edwards VC (1962). Animal dispersion in relation to social behaviour. Oliver &
40
41 20 Boyd, Edinburgh.
42
43 21
44
45 22 Zeng L, Cheng Q & Chen X (2012). Microsatellite analysis reveals the population structure &
46
47 23 migration patterns of *Scomber japonicus* (Scombridae) with continuous distribution in the
48
49 24 East & South China Seas. *Biochem Syst Ecol* 42:83-93.
50
51 25
52
53
54
55
56
57
58
59
60

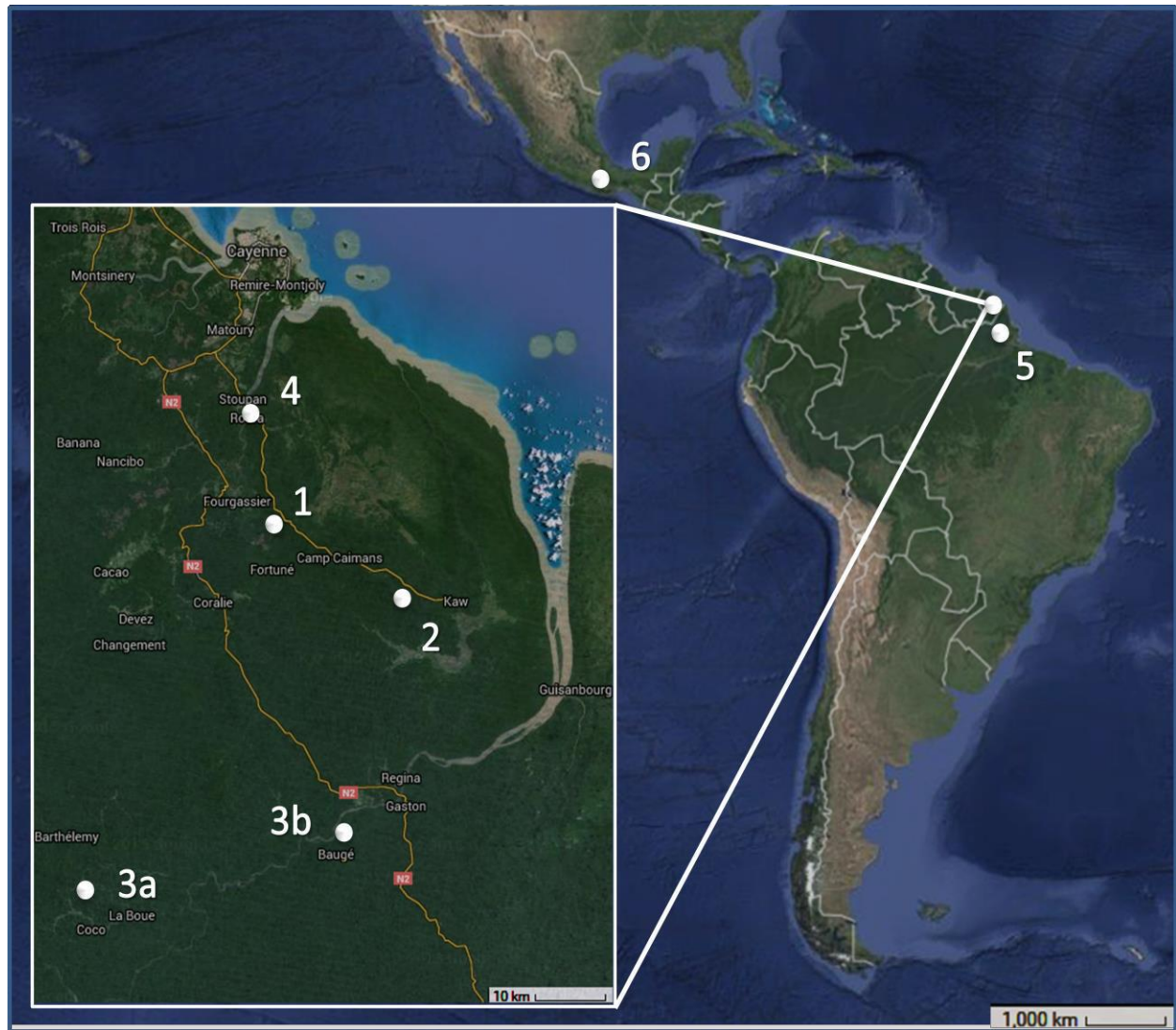


Figure 1. Geographical locations of *Desmodus rotundus* populations. POP1 to 4 were sampled in French Guiana, POP5 was sampled in Brazil and POP6 was sampled in Mexico. Map data © Google 2017

1
2
3
4
5
6
7
8
9
10
11
12
13
14
15
16
17
18
19
20
21
22
23
24
25
26
27
28
29
30
31
32
33
34
35
36
37
38
39
40
41
42
43
44
45
46
47
48
49
50
51
52
53
54
55
56
57
58
59
60

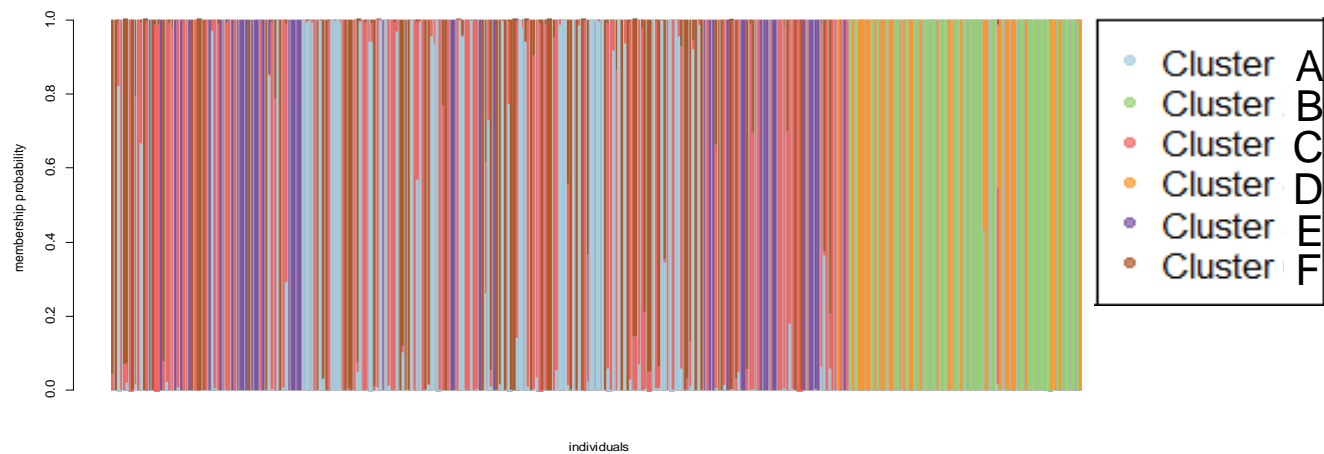


Figure 2. Distribution of clusters (K) by individuals estimated by *find.cluster* in ADEGENET R package represented by population

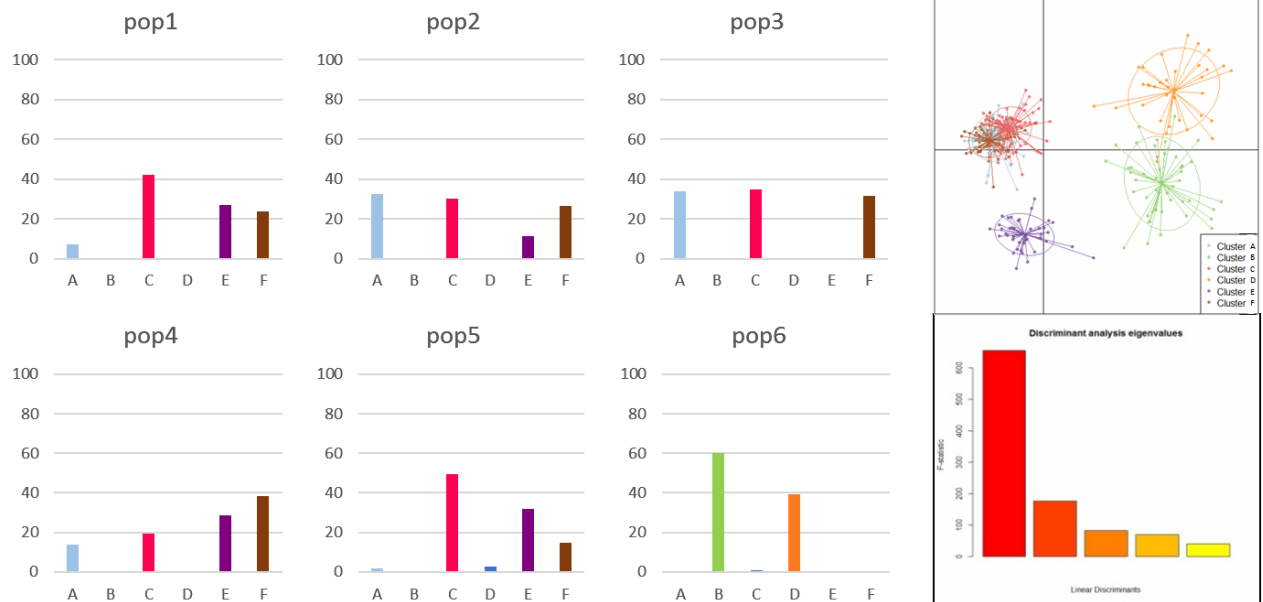


Figure 3. Discriminant Analysis of Principal Component on overall populations. Six clusters have been found with BIC-value (top-right) and discriminant analysis eigenvalue (bottom-right) estimated by *Adegenet* package (Jombart, 2011). The left part shows the contribution of the 6 clusters to the 6 populations.

Populations	Ho	He	Hs(±σ)	HW	Fis	r	N
1	0.673	0.771	0.704 (0.382)	0.000	0.128*	0.080	60
2	0.647	0.735	0.696 (0.377)	0.000	0.120*	0.075	89
3	0.662	0.716	0.595 (0.330)	0.002	0.076*	0.074	55
4	0.648	0.747	0.730 (0.406)	0.004	0.136*	0.052	14
5	0.720	0.826	0.708 (0.386)	0.000	0.130*	0.059	39
6	0.621	0.727	0.694 (0.376)	0.000	0.147*	0.077	82

Table 1. Descriptive statistics for each population including observed heterozygosity (Ho), expected heterozygosity (He), average genetic diversity (Hs), p-value of test of Hardy-Weinberg equilibrium (HW), inbreeding obtained by ARLEQUIN, coefficient (Fis) obtained by GENETIX, average relatedness coefficient (r) obtained by ML-RELATE and sample size (N).

	POP1	POP2	POP3	POP4	POP5	POP6
Pop1		6.90	7.86	11.94	8.47	1.15
Pop2	0.036*		20.26	6.46	6.37	1.02
Pop3	0.036*	0.009*		6.41	6.37	1.07
Pop4	0.023*	0.039*	0.042*		6.56	1.07
Pop5	0.031*	0.039*	0.044*	0.045*		1.47
Pop6	0.181*	0.199*	0.193*	0.194*	0.146*	

Table 2. Values below diagonal are Fst-values, values marked with an asterix (*) are significant ($p < 0.05$) obtained by ARLEQUIN with the method of pairwise genetic distances. Values above the diagonal are Nm values obtained by GENETIX .

1
2
3
4
5
6
7
8
9
10
11
12
13
14
15
16
17
18
19
20
21
22
23
24
25
26
27
28
29
30
31
32
33
34
35
36
37
38
39
40
41
42
43
44
45
46
47
48
49
50
51
52
53
54
55
56
57
58
59
60

Populations	K	Mean ($\pm\sigma$)	Fis	FisClus
1	14*	4.286 (3.534)	0.128*	-0.040*
2	13*	6.923 (7.550)	0.120*	0.018*
3	10*	5.500 (5.162)	0.076*	-0.027*
4	8*	1.750 (1.090)	0.136*	-0.027*
5	13*	3.000 (2.746)	0.130*	-0.013*
6	8*	10.250 (12.111)	0.147*	0.079*

Table 3. For hidden structure (BAPS analyses) reported number of clusters identified (K) with the higher for each population, mean (\pm standard deviation) of kin group sizes, Fis and FisClus for each population (recalculated after BAPS estimation) obtained by GENETIX 4.0.5.2. K-values are marked with an asterix (*) when FisCLus is significantly lower than Fis (Wilcoxon signed-rank; $p<0.05$).

	POP 1-A	POP 1-B	POP 1-C	POP 1-D	POP 1-E	POP 1-F
Pop 1-a						
Pop 1-b	0.170*					
Pop 1-c	0.103*	0.122*				
Pop 1-d	0.083*	0.126*	0.115*			
Pop 1-e	0.087*	0.105*	0.074*	0.109*		
Pop 1-f	0.165*	0.185*	0.196*	0.113*	0.208*	
	POP 2-A	POP 2-B	POP 2-C	POP 2-D		
Pop 2-a						
Pop 2-b	0.031*					
Pop 2-c	0.070*	0.041*				
Pop 2-d	0.072*	0.057*	0.076*			

Table 4. Fst-values between subpopulations of POP1 & POP2 whose numbers of individuals were greater than three obtained by ARLEQUIN 3.5 with the method of pairwise genetic distances. Values marked with an asterix (*) are significant ($p < 0.01$)

1
2
3
4
5
6
7
8
9
10
11
12
13
14
15
16
17
18
19
20
21
22
23
24
25
26
27
28
29
30
31
32
33
34
35
36
37
38
39
40
41
42
43
44
45
46
47
48
49
50
51
52
53
54
55
56
57
58
59
60

Populations	N	Hs($\pm\sigma$)	$\pi(\pm\sigma)$	H
1	6	0.000 (0.000)	0.000 (0.000)	H2
2	10	0.533 (0.095)	0.007 (0.005)	H1/H3
3	12	0.409 (0.133)	0.006 (0.004)	H1/H3
4	12	0.000 (0.000)	0.000 (0.000)	H2
5	10	0.556 (0.074)	0.005 (0.003)	H11/H12
6	12	0.864 (0.079)	0.006 (0.004)	H4 to H10

Table 5. MtDNA Dloop descriptive statistics for each population including sample size (N), average genetic diversity (Hs), average nucleotide diversity (π) obtained by ARLEQUIN and haplotype distribution (H) obtained by DNASP.

	POP1	POP2	POP3	POP4	POP5	POP6
Pop1						
Pop2	0.600*					
Pop3	0.721*	-0.045				
Pop4	0.000	0.691*	0.785*			
Pop5	0.927*	0.827*	0.841*	0.948*		
Pop6	0.971*	0.953*	0.958*	0.979*	0.963*	

Table 6. MtDNA Dloop Fst-values between populations obtained by ARLEQUIN 3.5 with the method of pairwise genetic distances. Values marked with an asterix (*) are significant ($p < 0.01$).

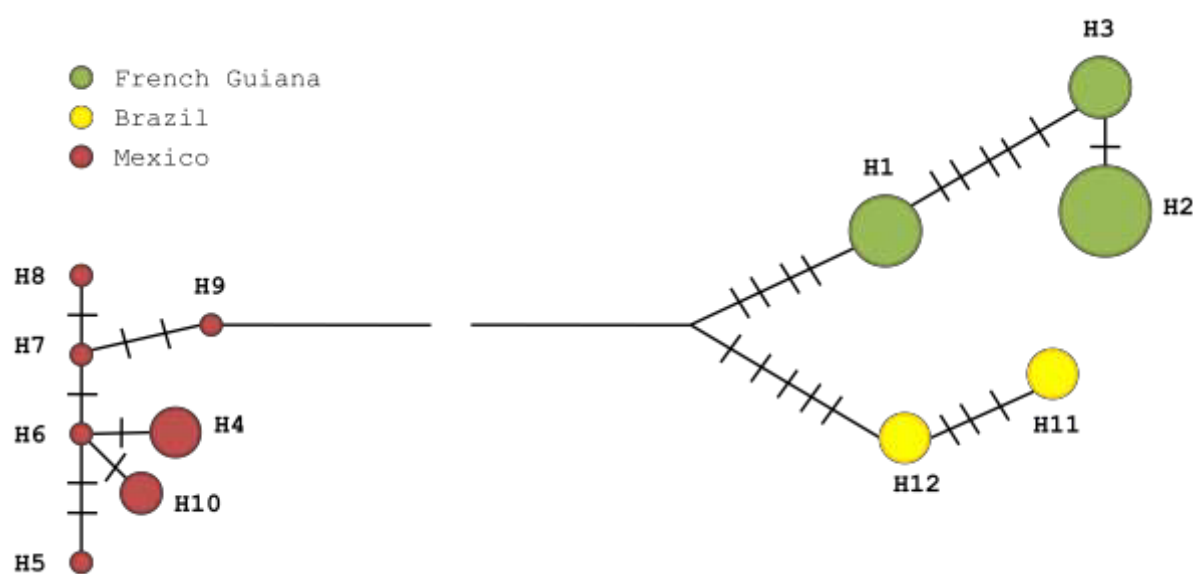


Figure s1. Haplotype networks of the mitochondrial DNA (mtDNA) control region (D-loop) at the nucleotide level for *D. rotundus*. Nodes are proportional to the frequency of bat carrying each haplotype, colored by the geographical location in which the bat was trapped. Hatch marks represent mutations. Interruptions in lines indicate the presence of more than ten mutations.

	Loci	Primer sequence (5'-3')	Repeat motif	Size	Source
DERO3	C12F B02R	GCTGGGTCACCTAAGTATGG CAAATCAGATATACAAAGAAGCAAG	(CA) ₁₇	100-200 pb	Piaggio et al., 2008
DERO4	B10F E01R	GAAGTTGGGGTGTCTATGG GGAGTTCTTTAGCCTGTGC	(GA) ₂₀	200-300 pb	Piaggio et al., 2008
DERO5	D12F D12R	ACATGCAAATCCATCTTGAT CCCAAATCCAAAACCTCAT	(CA) ₁₁ (AC) ₈	100-200 pb	Piaggio et al., 2008
DERO9	C11F C11R	GTTAATAAGCCTTCAGGAAAAGC TCCTTCTGCACTCAAGAATTTTA	(AG) ₉	100-200 pb	Piaggio et al., 2008
DERO11	C07F A02R	CCTAGGGCAAGAATGAGTATCC ACAGTATGGCACACAAACACG	(TG) ₉	100-200 pb	Piaggio et al., 2008
CARO3	AAGG-117F AAGG-117R	GACTAAGATAGATAAAATTGATGGATAA CAAATGCTTTAGTTTCCTGAAT	(AAGG) ₁₆	100-200 pb	Bardeleben et al., 2007
CARO6	AjA74F AjA74R	GGCAAAGGCTTTTACAAGTATG GCAGTGGAGGAGAAAGCTAGAC	(GT) ₇ ... (GT) ₄	100-200 pb	Ortega et al., 2002

Table s1. Characteristics of the 7 microsatellite loci that were used in this study.

1
2
3
4
5
6
7
8
9
10
11
12
13
14
15
16
17
18
19
20
21
22
23
24
25
26
27
28
29
30
31
32
33
34
35
36
37
38
39
40
41
42
43
44
45
46
47
48
49
50
51
52
53
54
55
56
57
58
59
60

Loci	MgCl2 (µl)	PCR conditions	Cycles
DERO3	0.5	94°C/5min ; 94°C/30sec ; 52°C 30sec ; 72°C/45sec ; 72°C/10min	45
DERO4	0.5	94°C/5min ; 94°C/30sec ; 60°C 30sec ; 72°C/45sec ; 72°C/10min	45
DERO5	0.4	94°C/5min ; 94°C/30sec ; 53°C 30sec ; 72°C/45sec ; 72°C/10min	40
DERO9	0.4	94°C/5min ; 94°C/30sec ; 52°C 30sec ; 72°C/45sec ; 72°C/10min	40
DERO11	0.5	94°C/5min ; 94°C/30sec ; 58,5°C 30sec ; 72°C/45sec ; 72°C/10min	40
CARO3	0.6	94°C/5min ; 94°C/30sec ; 55°C 30sec ; 72°C/45sec ; 72°C/10min	45
CARO6	0.6	94°C/5min ; 94°C/30sec ; 60°C 30sec ; 72°C/45sec ; 72°C/10min	40

Table s2. PCR condition were used for the 7 microsatellite loci in this study

Loci	POP 1	POP 2	POP 3	POP 4	POP 5	POP 6
DERO3	0,063*	-0,006	0,033	0,037	0,038	0,035
DERO4	0,024	0,110*	0,034	-0,072	0,052	0,089*
DERO5	0,042	0,039	0,045	-0,073	0,076*	0,019
DERO9	0,108*	0,030	0,028	0,067	0,038	0,120*
DERO11	0,065*	0,025	0,021	0,140*	0,010	0,082*
CARO3	-0,020	0,022	0,018	0,064	-0,000	-0,010
CARO6	0,086*	0,144*	-0,000	0,123*	0,168*	0,079*

Table s3. Null allele frequencis by locus and by population obtained MICROCHECKER 2.2.3 (Van Oosterhout and al., 2004) using method by Brookfield (1996). Null allele frequencis marked with an asterix (*) are significant.