



**HAL**  
open science

## Molecular detection of urogenital mollicutes in patients with invasive malignant prostate tumor

Osama Mohammed Saed Abdul-Wahab, Mishari H. Al-Shyarba, Boutheina Ben Abdelmoumen Mardassi, Nessrine Sassi, Majed Saad Shaya Al Fayi, Hassan Otifi, Abdullah Hassan Al Murea, Béhija Mlik, Elhem Yacoub

► **To cite this version:**

Osama Mohammed Saed Abdul-Wahab, Mishari H. Al-Shyarba, Boutheina Ben Abdelmoumen Mardassi, Nessrine Sassi, Majed Saad Shaya Al Fayi, et al.. Molecular detection of urogenital mollicutes in patients with invasive malignant prostate tumor. *Infectious Agents and Cancer*, 2021, 16 (1), pp.6. 10.1186/s13027-021-00344-9 . pasteur-03550441

**HAL Id: pasteur-03550441**

**<https://riip.hal.science/pasteur-03550441>**

Submitted on 1 Feb 2022

**HAL** is a multi-disciplinary open access archive for the deposit and dissemination of scientific research documents, whether they are published or not. The documents may come from teaching and research institutions in France or abroad, or from public or private research centers.

L'archive ouverte pluridisciplinaire **HAL**, est destinée au dépôt et à la diffusion de documents scientifiques de niveau recherche, publiés ou non, émanant des établissements d'enseignement et de recherche français ou étrangers, des laboratoires publics ou privés.




Distributed under a Creative Commons Attribution 4.0 International License

RESEARCH ARTICLE

Open Access

# Molecular detection of urogenital *mollicutes* in patients with invasive malignant prostate tumor



Osama Mohammed Saed Abdul-Wahab<sup>1</sup>, Mishari H. Al-Shyarba<sup>2</sup>, Boutheina Ben Abdelmoumen Mardassi<sup>3</sup>, Nessrine Sassi<sup>3</sup>, Majed Saad Shaya Al Fayi<sup>4</sup>, Hassan Otifi<sup>5</sup>, Abdullah Hassan Al Murea<sup>6</sup>, Béhija Mlik<sup>3</sup> and Elhem Yacoub<sup>3\*</sup> 

## Abstract

**Background:** The etiology of prostate cancer (PCa) is multiple and complex. Among the causes recently cited are chronic infections engendered by microorganisms that often go unnoticed. A typical illustration of such a case is infection due to mollicutes bacteria. Generally known by their lurking nature, urogenital mollicutes are the most incriminated in PCa. This study was thus carried out in an attempt to establish the presence of these mollicutes by PCR in biopsies of confirmed PCa patients and to evaluate their prevalence.

**Methods:** A total of 105 Formalin-Fixed Paraffin-Embedded prostate tissues collected from 50 patients suffering from PCa and 55 with benign prostate hyperplasia were subjected to PCR amplification targeting species-specific genes of 5 urogenital mollicutes species, *Mycoplasma genitalium*, *M. hominis*, *M. fermentans*, *Ureaplasma parvum*, and *U. urealyticum*. PCR products were then sequenced to confirm species identification. Results significance was statistically assessed using Chi-square and Odds ratio tests.

**Results:** PCR amplification showed no positive results for *M. genitalium*, *M. hominis*, and *M. fermentans* in all tested patients. Strikingly, *Ureaplasma* spp. were detected among 30% (15/50) of PCa patients. Nucleotide sequencing further confirmed the identified ureaplasma species, which were distributed as follows: 7 individuals with only *U. parvum*, 5 with only *U. urealyticum*, and 3 co-infection cases. Association of the two ureaplasma species with PCa cases proved statistically significant ( $P < 0.05$ ), and found to represent a risk factor. Of note, *Ureaplasma* spp. were mostly identified in patients aged 60 and above with prostatic specific antigen (PSA) level  $> 4$  ng/ml and an invasive malignant prostate tumor (Gleason score 8–10).

**Conclusions:** This study uncovered a significant association of *Ureaplasma* spp. with PCa arguing in favour of their potential involvement in this condition. Yet, this finding, though statistically supported, warrants a thorough investigation at a much larger scale.

**Keywords:** Prostate cancer, Urogenital mollicutes, PCR, Sequencing

\* Correspondence: [elhem.yacoub@pasteur.utm.tn](mailto:elhem.yacoub@pasteur.utm.tn)

<sup>3</sup>Specialized Unit of Mycoplasmas, Laboratory of Molecular Microbiology, Vaccinology, and Biotechnology Development, Institut Pasteur de Tunis, University of Tunis El-Manar, Tunis, Tunisia

Full list of author information is available at the end of the article



© The Author(s). 2021 **Open Access** This article is licensed under a Creative Commons Attribution 4.0 International License, which permits use, sharing, adaptation, distribution and reproduction in any medium or format, as long as you give appropriate credit to the original author(s) and the source, provide a link to the Creative Commons licence, and indicate if changes were made. The images or other third party material in this article are included in the article's Creative Commons licence, unless indicated otherwise in a credit line to the material. If material is not included in the article's Creative Commons licence and your intended use is not permitted by statutory regulation or exceeds the permitted use, you will need to obtain permission directly from the copyright holder. To view a copy of this licence, visit <http://creativecommons.org/licenses/by/4.0/>. The Creative Commons Public Domain Dedication waiver (<http://creativecommons.org/publicdomain/zero/1.0/>) applies to the data made available in this article, unless otherwise stated in a credit line to the data.

## Background

Cancer is a major public health issue, considered as one of the leading causes of death worldwide. According to latest records of the International Agency for Research on Cancer, World Health Organization (WHO), the Prostate Cancer (PCa) ranked fourth among the most common cancers worldwide with 1.28 million cases [1]. The main established risk factors for PCa are increasing age, ethnicity, and family history [2], yet compelling evidence suggests a role for environmental factors and infections [3]. In fact, it was found that chronic inflammation associated with infections could tip the balance towards abnormal cellular growth and proliferation. The mechanisms governing the inflammation process that triggers cancer development are beginning to be investigated. In prostate cancer for example, inflammatory reaction was found to be orchestrated by a multiprotein complex known as inflammasomes. Once activated with an infection and/or another stimulus (cell injury, hormonal variation, dietary or environmental factors ...), these inflammatory regulators induce a cascade of proinflammatory signaling molecules capable of modulating different cellular activities. This often results in cell damage and enhances abnormal cell proliferation [4]. Thus, inflammation has been considered as an important carcinogenesis promoting condition for some organs, including prostate [5, 6]. Different types of cancer such as those of colon, stomach, liver, and prostate have been linked to persistent inflammation due to chronic infections [7–9]. Additionally, according to the American Cancer Society, about 15 to 20% of cancers worldwide are directly related to infectious agents [10]. For oncoviruses for example, the causal relationship with cancer has been well documented since the early 1980s. Since then, viruses are admitted as bona-fide causes of many human cancer types [11, 12]. Apart from viruses, the link between bacterial infections and the development of malignancy was also well explored. It was suggested that several prokaryotes are able to exhibit tumorigenic properties [13, 14]. For instance, many convincing proofs have attributed *Streptococcus bovis* to colon cancer [15], *Salmonella thyphii* to gallbladder cancer [16], *Chlamydia pneumoniae* to lung cancer [17], *Bartonella* species to vascular cancer [18], and *Helicobacter pylori* to gastric cancer [19, 20]. Yet, while the latter association has arguably been established [21], it is still unclear whether these infections are themselves directly involved in tumorigenesis or represent a promoting factor.

Regarding mycoplasmas, the smallest known free-living bacteria, their oncogenic potential and role in cancer development have been investigated as early as the 1960s [22]. Actually, the association between malignancy and human mycoplasmas was initially suggested for the human respiratory pathogen *Mycoplasma pneumoniae*,

which was among the first species suspected to be associated with human leukemia [23]. Since then, many other studies suggesting a possible role for mycoplasmas in malignancy have been reported, but no evidence of causation has been brought forward [24]. However, the potential to cause cancer of other mycoplasma species, such as *M. fermentans*, *M. penetrans*, and *M. hyorhinitis* has been demonstrated in vitro [25–27]. Additionally, it was also shown that mycoplasma infection is able to transform embryonic cells in mouse by promoting the expression of some oncogenes like *H-ras* and *c-myc*. Prolonged infection with mycoplasma was found to lead to prominent chromosomal alteration (rearrangement, translocation, altered pattern of DNA ...), to morphological changes, and to uncontrolled cell growth [28]. For *M. hominis*, *M. genitalium*, and *U. urealyticum*, a potential involvement in PCa has been suggested since these species were detected by PCR in patients suffering from this type of cancer [29–33]. These findings are in line with the ability of these mycoplasma species to establish chronic infections in individuals with prostate cancer as evoked since the mid-twentieth century [34, 35].

A rising incidence of PCa was observed in Asian patients from China, India, and Malaysia [36, 37]. It's worth mentioning that this type of cancer was ranked second most commonly diagnosed cancer and six leading cause of cancer-related death in men worldwide. Likewise, the situation in the Kingdom of Saudi Arabia (KSA) regarding PCa incidence was considered critical as the statistics were getting worse. Indeed, according to the Saudi Cancer Registry and referring to local literature, an upward trend in PCa incidence, from 2.7% in 1994 to 6.3% in 2008, was reported [38, 39]. Although alarming in the KSA, this serious disease is neither studied enough nor the related data being updated.

Here, we investigated the possible involvement of urogenital mollicutes in PCa in a cohort of Saudi patients from Aseer region. We sought to demonstrate the presence of *M. genitalium*, *M. hominis*, *M. fermentans*, *U. urealyticum*, and *U. parvum* by PCR amplification targeting species-specific genes.

## Methods

### Patients

A total of 105 Saudi patients with inflamed, swelling, and painful prostate gland, referred to Aseer Central Hospital (Abha, southwestern KSA) during the years 2010 to 2017, were enrolled in this work. All patients were presenting suspicious and abnormal digital rectal examination (DRE) findings and/or elevated PSA (Prostate Specific Antigen) level ( $\geq 4$  ng/ml). Patients age ranged from 46 to 104 years. Data about Gleason score and PSA were recorded.

### Prostate specimens preparation

Prostate specimens were obtained from patients either by transrectal ultrasound (TRUS)-guided biopsy or by surgery (transurethral resection of the prostate: TURP). Both procedures were carried out by specialized physicians in the Central Hospital of Aseer Region (Abha town, KSA).

TRUS biopsy was performed using an endfiring 7.5-MHz biplane transrectal probe attached to an ultrasonography device (bk 3000 ultrasound systems, Denmark). No local anesthetic injection was used as most of the patients tolerated the procedure very well. However, all of them received a general pain killer (75 mg intramuscular pethidine (demerol) injection pre-procedural statin). Biopsy was performed half an hour after pethidine injection. To prevent patients from post-interventional complications, three oral doses of Ciprofloxacin (500 mg) were administered to them before, during, and after the biopsy procedure.

TURP was undertaken by urological surgeons. The procedure was carried out under general anaesthesia using bipolar devices. Gentamicin antibiotic (160 mg) was administered intravenously to patients 1 h before the TURP surgical procedure.

### Histopathological examination

All patients specimens were placed in biocassettes and were dehydrated in histokinette with 10% formalin solution for 24 h. Then, they were embedded in paraffin blocks, sectioned with a microtome into slices of 4  $\mu$ m thick and stained with hematoxylin-eosin (H & E). Differentiation between the benign and malignant prostatic specimens, as well as the aggressiveness classification of the cancerous tissues according to Gleason score [40] were done by experienced Saudi pathologists using light microscopy. Overall, 50 patients were diagnosed with prostate cancer (Cohort 1). Based on anatomopathological examination and Gleason score attribution, tumors were defined as aggressive (poorly differentiated, Gleason score 8–10) in 38 patients and as non-aggressive (moderately differentiated, Gleason score 6–7) in 12 patients. The other 55 patients were diagnosed with Benign Prostate Hyperplasia (BPH) and used as negative controls (Cohort 2).

Formalin-Fixed Paraffin-Embedded (FFPE) prostate tissues were forwarded to the laboratory of mycoplasmas, Institut Pasteur, Tunis, for further manipulations.

### DNA isolation from prostate specimens and from mycoplasma cultures

Total genomic DNA was extracted from sections of FFPE prostate tissue using the QIAamp<sup>®</sup> DNA FFPE Tissue Kit (Qiagen, Germany) according to the supplier's instructions. For each biopsy, up to eight sections of 5 to

10  $\mu$ m thick were cut using a microtome and placed in a sterile 2-ml microcentrifuge tube. Sections of FFPE prostate tissue were subjected to paraffin dissolution using xylene (Honeywell, France), followed by homogenization and enzymatic digestion with proteinase K and lysis buffer. Samples were incubated overnight at 56 °C and lysates were purified using the QIAamp MinElute columns to obtain high quality DNA for PCR.

Using the classical phenol/chloroform DNA extraction method [41], genomic DNA was also extracted from the urogenital mollicutes species, *M. hominis* PG21 (ATCC 23114), *M. genitalium* G37 (ATCC 33530), *M. fermentans* PG18 (ATCC 19989), *U. urealyticum* (ATCC 27618), and *U. parvum* (ATCC 27813), in order to be used as controls in the PCR reactions. These mollicutes species were cultivated on appropriate SP4 broth medium, prepared according to the previously described formulation [42]. Antigen of each species was collected and washed by a series of centrifugations at 16000 rpm at 4 °C for 30 min using PBS buffer.

Quantity and quality of DNA were assessed by Nanodrop absorbance measurement and by electrophoresis on 1% agarose gel stained with CYBR safe. The obtained purified DNAs were stored at –20 °C until needed.

### Standard PCR assays for screening of urogenital mollicutes DNA in the FFPE samples

For each mollicutes species, PCR assays were designed to amplify 16S rRNA gene along with a specific gene fragment; *p120'* gene (coding for DUF885 family protein) for *M. hominis*, *mgaA* gene (coding for Adhesin P1 protein) for *M. genitalium*, the gene coding for the Insertion Sequence like-element (*IS1630I*) for *M. fermentans*, and *ureB* gene (coding for beta subunit of the urease enzyme) for *Ureaplasma* spp. An internal control specific to the human mitochondrial cytochrome c oxidase subunit III gene (named MT-CO3) was also included. Details about these target genes and their respective primer sequences are presented in Table 1. PCRs were performed in a total volume of 50  $\mu$ l in a thermal cycler (Applied biosystems, USA model 2720). All PCR mixtures contained 10X *Taq* buffer, 1 mM MgCl<sub>2</sub>, 0.2 mM dNTP (Sigma, Germany), 1 pmol of each primer, 1.5 U of HotStar-Taq DNA polymerase (Qiagen, Germany), and 1–2  $\mu$ l (approximately 150 ng) of genomic DNA. All samples were subjected to a first denaturation step at 95 °C for 10 min and then to 35 cycles at 94 °C for 1 min (denaturation), 55 °C for 1 min (annealing), and 72 °C for 1 min (elongation). The cycling was ended by an extension step at 72 °C for 10 min. Ten microliters of each amplicon were electrophoresed on a 2% agarose gel stained with CYBR safe and visualized under UV light.

**Table 1** Characteristics of primers used for detection of mollicutes investigated in this study

Mycoplasma species	Primer designation	Target gene	Gene locus	Product	Amplicon size (bp)	Sequence (5'-3')	References
<i>M. hominis</i>	Mhp120F	<i>p120'</i>	MHO_RS02125	DUF885 family protein	190	GTTTAGAAGGTAAAATTCTA	This study <sup>a</sup>
	Mhp120R					CATCAGCAGGATTGTTAAAGCT	
<i>Mh</i>	Mh16SF	<i>rrnA16S</i>	MHO_RS01540	16S ribosomal RNA	164	GGTAATGGCCACCACGACTAT	This study <sup>a</sup>
	Mh16SR					GAAAGCCCTTCATCGTGACGCTG	
<i>M. genitalium</i>	MgPa335F	<i>mgpA</i>	MG_RS01075	Adhesin protein	78	GAGAAATACCTTGATGGTCAGCAA	[43]
	MgPa432R					GTTAATATCATATAAAGCTACCGTTGTTATC	
<i>M. fermentans</i>	Mg16SF	<i>rrnA16S</i>	MG_RS00775	16S ribosomal RNA	195	TAGCTAATACCGCATAGAACTTT	This study <sup>a</sup>
	Mg16SR					CTCCCGTAGGAGTATGGGCCGTGT	
<i>M. fermentans</i>	RW 005	<i>IS1630I</i>	MBIO_RS03870	IS30-like element	205	GGTTATTCGATTTCTAAATCGCCT	[44]
	RW 004					GGACTATTGTCTAAACAATTTCCC	
<i>U. urealyticum</i>	Mf16SF	<i>rrnA16S</i>	MBIO_RS4090	16S ribosomal RNA	186	TTGACGGTACCTTATTAGAAA	This study <sup>a</sup>
	Mf16SR					TCTACACAACCTTAGCCTG	
<i>U. urealyticum</i>	UUureF	<i>ureB</i>	UUR8_RS02385	Urease subunit beta	100	GATCACATTTCCACTTATTTGAAACA	[45]
	UUureR					AAACGACGTCCTAAGCAAATTTA	
<i>U. parvum</i>	Uu16SF	<i>rrnA16S</i>	UUR8_RS00640	16S ribosomal RNA	181	TGCCTGGGTAGATTCGCAAGAA	This study <sup>a</sup>
	Uu16SR					GACAACCATGCACCACCTGTC	
<i>U. parvum</i>	UPureF	<i>ureB</i>	UPA3_RS02275	Urease subunit beta	99	GATCACATTTCCACTTGTG AAGTG	[45]
	UPureR					AACGTCGTCATAAGCAAATTTG	
<i>U. parvum</i>	Up16SF	<i>rrnA16S</i>	UPA3_RS00595	16S ribosomal RNA	183	CTTTTATATGGGAAGAAACGCT	This study <sup>a</sup>
	Up16SR					GCATCTAGATTAATACC	
Human DNA	HmitoDNAF	<i>MT-CO3</i>	YP_003024032.1	Cytochrome c oxidase subunit III	208	GGATAATCTTATTATTACCTCAGAAG	This study <sup>a</sup>
	HmitoDNAR					AGACTATGGTGAGCTCAGGTGATTGAT	

<sup>a</sup>primers for each gene were designed based on sequences available in GenBank

### Sequencing and bioinformatics analysis

PCR products were cleaned-up using the ExoSAP protocol. For this purpose, exonuclease I (Biolabs, England) and shrimp alkaline phosphatase (Biolabs, England) enzymes were used to remove leftover primers and remaining dNTPs, respectively. Sequencing was performed using the BigDye Terminator v3.1 cycle sequencing kit (Applied Biosystems, USA), according to the manufacturer's instructions. Sequencing products were run in Applied Biosystems® 3130 Genetic Analyzer (USA) available at the sequencing facility of Institut Pasteur, Tunis. For each PCR amplicon, both strands were sequenced. The derived nucleotide sequences were aligned with reference sequences downloaded from GenBank using the BioEdit Sequence Alignment Editor, version 7.2.5.

### Statistics

Statistical analyses were performed using Excel tools (Microsoft, USA) to assess the prevalence of mollicutes species among the studied population. The chi-square test was computed to evaluate the potential relationship between the urogenital mollicutes infections and PCa. *P* value < 0.05 was considered statistically significant. Odds ratio with a 95% confidence interval was also calculated to estimate the role of mollicutes as a risk factor in PCa disease. Odds ratio values > 1 indicated that mollicutes infections might be a risk factor for the PCa. All these tests were performed using the Statistical Package for Social Science (SPSS) 20.0 software (IBM Corp. Armonk, NY, USA).

### Results

The mean age of Saudi men included in this study was 76.08 years for those suffering from PCa and 72.18 years for those diagnosed with BPH. Within both groups, patients aged between 70 and 79 years were the most frequent (46 and 40%, respectively). In both groups, the least common patients were those aged under 60, particularly in the PCa category with only 2 cases (4%). Regarding PSA records, levels were > 4 ng/ml in 92% (48/50) of patients with PCa and 70% (38/55) of patients displaying BPH. Interestingly, high PSA levels exceeding 20 ng/ml were recorded for a large number of PCa patients (62%), whereas only 13% amongst BPH cases showed such high levels. After anatomopathology examination, Gleason score attribution was only applied to patients suffering from PCa. Patients with aggressive PCa were found to be nearly three times more frequent than those with non-aggressive PCa (76% versus 24%, respectively). The characteristics of the study population are summarized in Table 2.

Electrophoresis and Nanodrop quantification have shown that genomic DNA extracted from all mollicutes

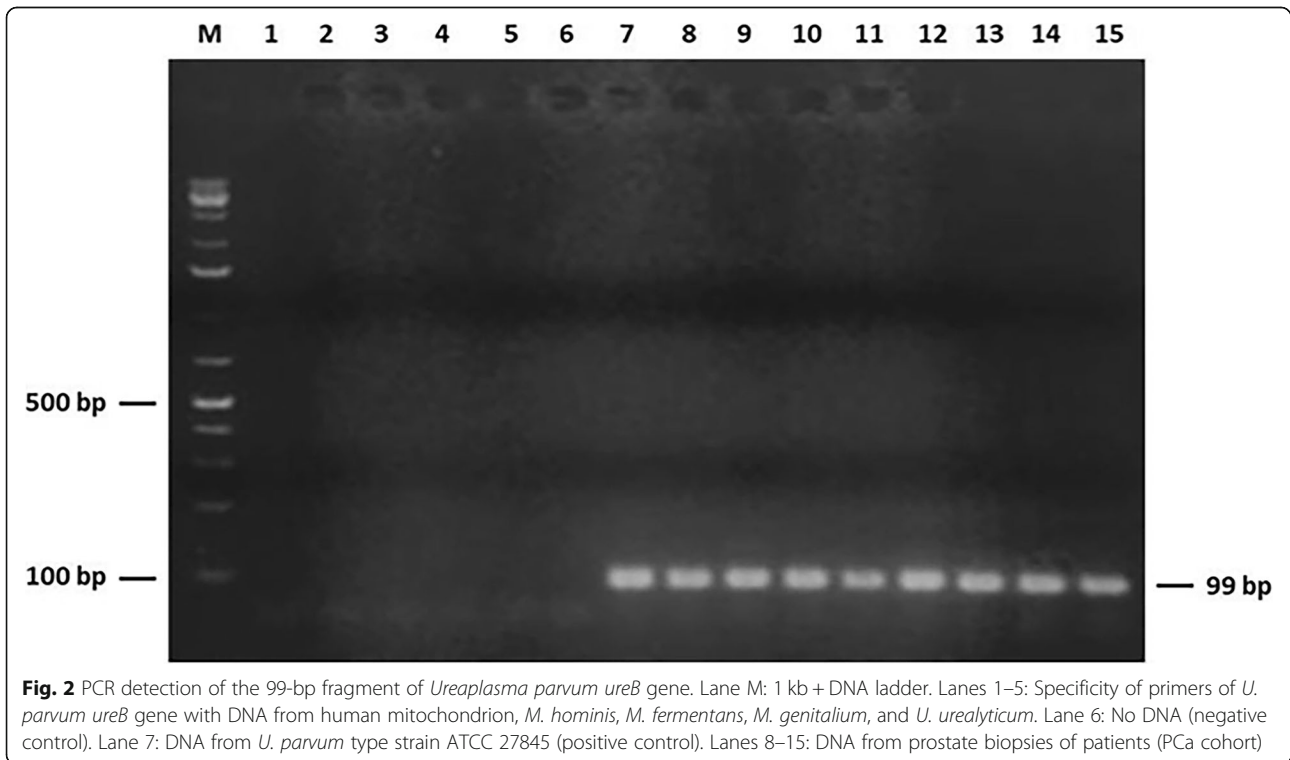
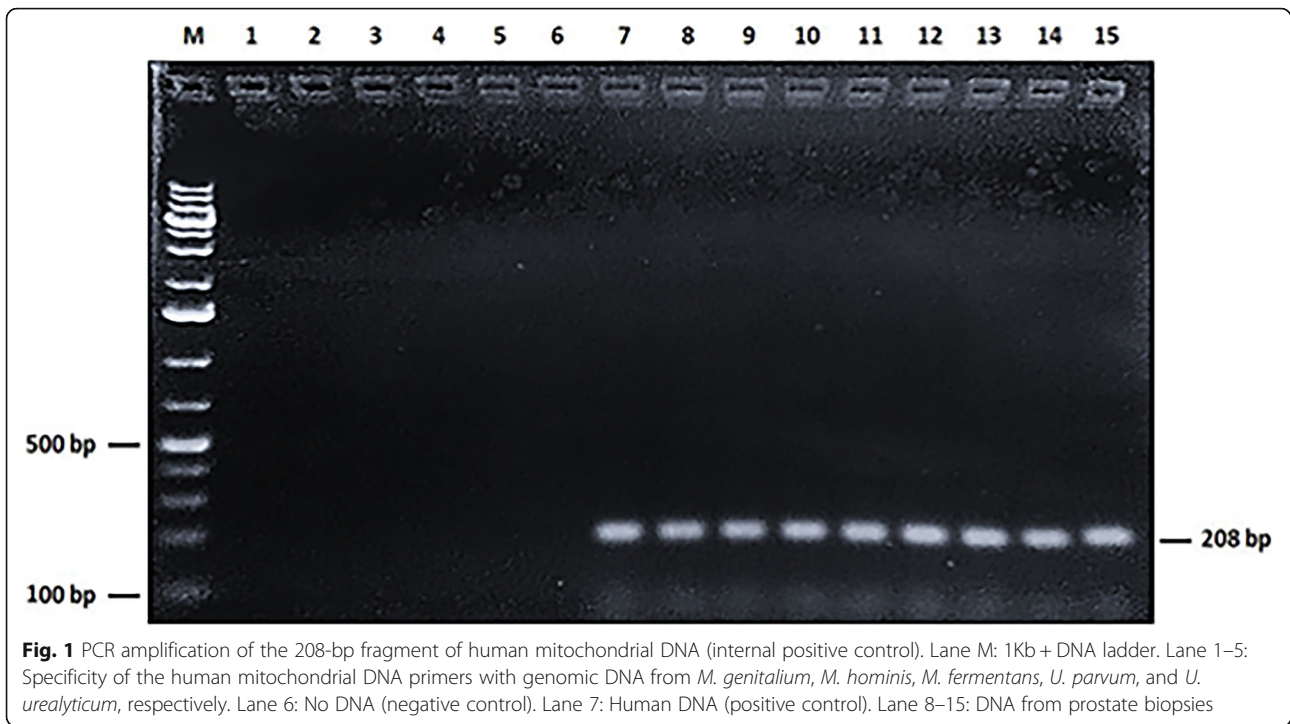
**Table 2** Characteristics of the studied population

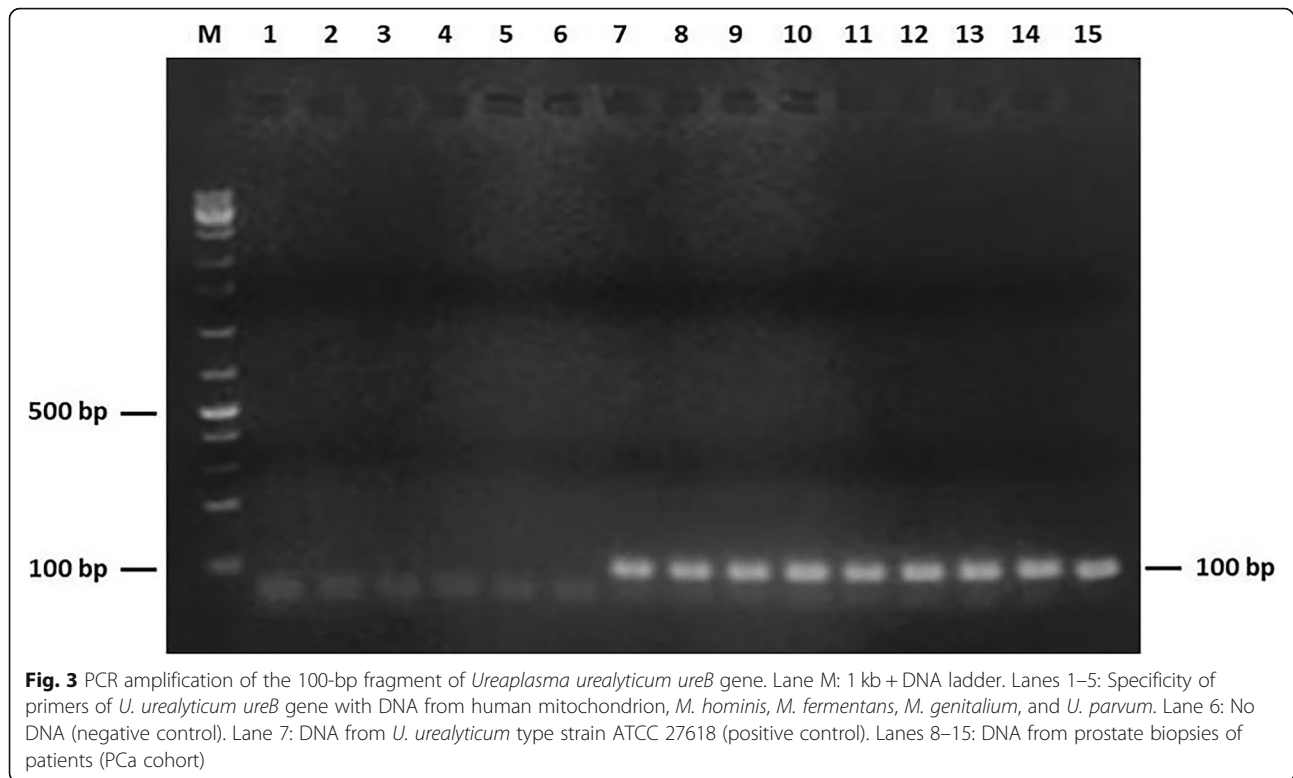
	PCa (n = 50)		BPH (n = 55)	
Age (years)				
< 60	2	(4%)	5	(9%)
60–69	9	(18%)	17	(31%)
70–79	23	(46%)	22	(40%)
> 79	16	(32%)	11	(20%)
PSA level (ng/ml)				
0–4	4	(8%)	17	(31%)
4.1–10	7	(14%)	17	(31%)
10.1–20	8	(16%)	14	(25%)
> 20	31	(62%)	7	(13%)
Gleason score				
6–7	12	(24%)	–	–
8–10	38	(76%)	–	–

PCa Prostate Cancer, BPH Benign Prostate Hyperplasia, PSA Prostate Specific Antigen

reference strains as well as DNA collected from all FFPE human samples were of high quality and quantity (DNA concentration ranged from 100 to 1750 ng/μl). This has been confirmed by the efficient amplification of a 208-bp fragment of the human mitochondrial DNA. Indeed, all the 105 samples (100%) produced this targeted fragment at its expected size (Fig. 1).

None of the 105 prostate samples was found to contain DNA of mycoplasma species. Indeed, all PCR amplifications targeting 16S rRNA and specific genes of *M. genitalium*, *M. hominis*, and *M. fermentans* were negative (Data not shown). Interestingly, PCR-based detection of ureaplasma species was positive in 18 cases. The biotyping of *Ureaplasma* spp. revealed *U. parvum* and *U. urealyticum* in ten (20%) and eight (16%) samples, respectively. The 99-bp and 100-bp PCR products corresponding to the amplification of *U. parvum* and *U. urealyticum* specific urease coding genes are shown in Figs. 2 and 3, respectively. This result was further confirmed by positive amplification of the targeted segments within 16S rRNA gene in *Ureaplasma* spp. (Figures S1 and S2). Both forward and reverse strands of these PCR amplicons were sequenced. Alignment of the derived nucleotide sequences with corresponding *Ureaplasma* spp. reference sequences showed a 100% identity and thus confirmed species identification. Of note, these ureaplasma-positive PCR were only observed in prostate samples of patients diagnosed with PCa. Chi-square test was computed for each ureaplasma species to assess the significance of its potential association with PCa. PCR results relative to these two species in both cohorts group patients were taken into account. Both calculated *P* values proved statistically significant (*P* = 0.0005 for *U. parvum* and *P* = 0.002 for *U. urealyticum*). The Odds





Ratio values were found to be infinite, suggesting that infection with each of ureaplasma species could constitute a risk factor in PCa disease. Results of mollicutes detection in archival tissues are summed up in Table 3.

The 18 *Ureaplasma* spp. positive PCR were detected in 15 patients with PCa. These positive cases were distributed as follows; 7 patients were found to be infected with only *U. parvum*, 5 with only *U. urealyticum*, and 3 were co-infected with both species. Based on their Gleason score, tumors of most of the PCa patients infected with *U. urealyticum* are categorized as aggressive (7 out of 8 patients; 87.5%). For those infected with *U. parvum*, the rate of aggressive tumors was also high (7 out of 10 patients; 70%).

Considering both ureaplasma species and taken into account the three cases of co-infection, statistics showed

that among the 15 patients in which *Ureaplasma* spp. were detected, 12 were diagnosed with an aggressive PCa (Gleason score between 8 and 10), which represents 80% (12/15). These 15 patients were found to belong to different age intervals. Aside from one PCa patient, all the others (14/15; 93.33%) are aged more than 60 years. Moreover, the majority of these patients (9/15; 60%) showed high PSA levels, exceeding 20 ng/ml. The characterization based on different parameters (Species, Gleason score, age, and PSA level) of the group of patients diagnosed with PCa and found to harbor *Ureaplasma* spp. DNA is presented in Fig. 4.

## Discussion

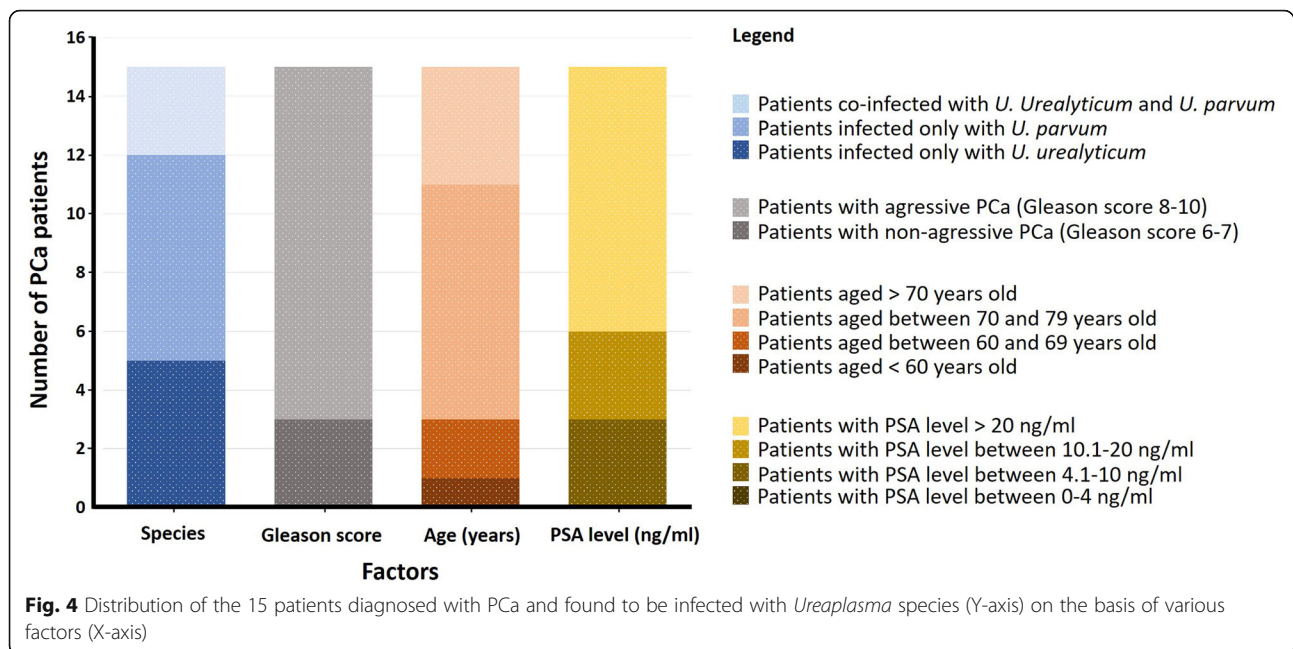
Because of its wide-ranging impact on the human health and social life, cancer has prompted scientific research

**Table 3** Prevalence of urogenital *Mollicutes* identified in biopsies of prostate with malignant or benign cancer

Target organism	Overall prevalence				P value
	Malignant tumor tissues		Benign tumor tissues		
	n = 50	%	n = 55	%	
<i>Ureaplasma parvum</i>	10	20	0	0	0.0005
<i>Ureaplasma urealyticum</i>	8	16	0	0	0.002
<i>Mycoplasma hominis</i>	0	0	0	0	NA
<i>Mycoplasma genitalium</i>	0	0	0	0	NA
<i>Mycoplasma fermentans</i>	0	0	0	0	NA

NA Not applicable





**Fig. 4** Distribution of the 15 patients diagnosed with PCa and found to be infected with *Ureaplasma* species (Y-axis) on the basis of various factors (X-axis)

to delve into its causes and risk factors. Millions of new cases and deaths are recorded worldwide every year [46]. Several studies on determinants of cancer's origins have led to the suspicion that chronic infections are involved in its establishment or progression [47, 48]. In the beginning, this assumption was always controversial given that cancer is usually assumed to have a genetic background. Over the last few decades, the biology and mechanisms governing the cancer-infectious agents relationship are beginning to be unraveled. One of these mechanisms is the infection-related inflammation. For example, the activation of the nuclear factor kappaB (NF- $\kappa$ B) inflammatory pathway, involved in the maintenance of the cell cycle stability, was associated to cancer. This activation could inhibit apoptosis and promote cell transformation. This was reported for the bacterium *Helicobacter pylori* in the case of gastric cancer [49] as well as for many oncoviruses like hepatitis virus [50].

While the role of viruses in carcinogenesis has long been established, the possible involvement of bacteria is beginning to gain more and more acceptance [51–57]. With regard to prostate cancer, it was suggested that sexually transmitted infections could be a risk factor for its development [58]. Recent advances in techniques of molecular microbiology have allowed the identification of many microorganisms in prostate cancer tissues, such as the sexually transmitted bacteria *Chlamydia trachomatis* and *Trichomonas vaginalis*, the prostatitis-associated *Escherichia coli* and *Pseudomonas*, human papilloma virus, and the pro-inflammatory bacteria *Propionibacterium acnes* [58]. However, as yet, no

association between PCa and infection with any pathogen could firmly be established [59, 60]. Very recently, a link has been evoked between prostate cancer and the severe acute respiratory syndrome coronavirus 2 (SARS-CoV-2) infection, causing the current 2020 pandemic COVID-19. A gene named transmembrane serine protease 2 (TMPRSS2) for which alteration was historically associated with prostate tumorigenesis was recently confirmed to be involved in facilitating the SARS-CoV-2 entry into host cells. Yet, it is premature to speculate about any involvement of SARS-CoV-2 in PCa [61, 62].

In this study, we have searched for the presence of a panoply of urogenital mollicutes species (*M. hominis*, *M. genitalium*, *M. fermentans*, *U. urealyticum*, and *U. parvum*) in prostate tissues from KSA patients with PCa or BPH, using PCR coupled to nucleotide sequencing. In KSA, no studies have been undertaken so far dealing with the etiopathogenesis of PCa. The only available data are about the incidence and mortality rates related to this cancer [63]. Epidemiologic data relating to the time period 2001–2008 have reported a steady increase in PCa incidence and mortality rates [39], however, since then, the situation has not been updated. This further highlights the importance of PCa disease in KSA and prompts the investigation of a potential involvement of urogenital mollicutes in the progression of this cancer.

PCR results showed no amplification of *M. genitalium*, *M. fermentans*, or *M. hominis* DNAs from PCa tissues of Saudi patients. Such a result could be subject to variation, since in Iran the same study confirmed the absence of *M. genitalium* in PCa [30], while in Australia

and Japan, *M. genitalium* was identified with rates of 8% [31] and 40% [29], respectively. *M. hominis* was detected at a rate of 15% in Russian men suffering from PCa [33], but not in Japanese patients [29]. Regarding *M. fermentans* species, it was suspected in the prostate carcinogenesis in Turkey, but no precise results about its prevalence were communicated [32].

A total of 15 Saudi patients tested were found to harbor *Ureaplasma* spp. DNA. All of them were diagnosed with PCa. Twelve patients were infected with only one *Ureaplasma* species while the 3 others were co-infected with both *Ureaplasma* species simultaneously. *U. urealyticum* was detected in 8 among the 50 PCa patients (16%). This rate is the highest among the reported cases. Indeed, only one case of positive *U. urealyticum* PCR was reported in each of the Australian and the Iranian studies already mentioned above [30, 31]. In this study, *U. parvum* was identified at a rate of 20% (10/50). This is the first study that reports the detection of this species in patients with PCa. Furthermore, the coinfection with *U. urealyticum* and *U. parvum* of the same patient with PCa is a new finding reported for the first time by our study. However, this result remains to be consolidated. Apart from some new clues unveiled by our study, we found some similarities with other studies in terms of species identification and rates. This could explain the role played by several factors such as hereditary susceptibility, environmental factors, or even the methods used to identify *Mycoplasma* species and their genes [64]. The fact that we have detected *Ureaplasma* spp. only in patients suffering from PCa lends further support to the hypothesis suggesting their involvement in the etiology of this type of cancer.

In the case of our study, though the results are statistically supported, one can not formally conclude that the presence of *Ureaplasma* spp. is the primary cause of prostate carcinogenesis. However, according to the Gleason score values (8–10), the presence of *Ureaplasma* spp. could have contributed to the worsening of cancer progression. Indeed, patients with PCa harbouring ureaplasmas displayed invasive malignant tumours of the prostate. These findings are recorded in patients over 60 years old and with PSA values > 4 ng/ml. Like viruses, mycoplasmas are notoriously known for their ability to cause low-grade chronic inflammation and silent infection, a hallmark thought to gradually compromise the immune system of their hosts, thereby promoting cancer transformation. Nevertheless, their detection in tumour microenvironment does not imply that they are causally involved in carcinogenesis. Actually, many factors like the high prevalence of the infectious agent in the general population, the extended latency, the asymptomatic infections, and the immune system status of patients could make difficult establishing a causality link [9]. Also, one

can not ignore the idea that detection of mycoplasma (or any other microorganism) in cancerous tissues could be a consequence of the compromised immune response in tested patients since cancer is known for its association with a wide range of immunological disorders. Indeed, it was suggested that viruses could be activated as consequence of carcinogenesis rather than being a cause of it, and that their carcinogenic potential could be related to the dramatically compromised immune system [9].

To sum up, the role of microbes in cancer is still a subject of debate and it is obvious that all these results further lead us to provide more evidence of the role that mollicutes can play in prostate cancer. Appropriate animal models and in vitro cell cultures could be very useful to achieve this goal.

## Conclusions

To our knowledge, this study is the first to be conducted in KSA aiming to characterize the PCa from an etiological standpoint. The finding that only patients with PCa were significantly associated with *Ureaplasma* spp. infection is in favor of their potential involvement in prostate cancer or, most likely, points to their contribution in worsening its progression. These data are worth to be considered by the Saudi health policy makers during decision-making processes regarding the control and follow-up of PCa epidemiology in KSA.

## Supplementary Information

The online version contains supplementary material available at <https://doi.org/10.1186/s13027-021-00344-9>.

**Additional file 1: Figure S1.** PCR amplification of *Ureaplasma parvum* 16S rRNA gene. Lane M: 1 kb + DNA ladder. Lanes 1–5: Specificity of primers of *U. parvum* 16S rRNA gene with DNA from human mitochondrion, *M. hominis*, *M. fermentans*, *M. genitalium*, and *U. urealyticum*. Lane 6: No DNA (negative control). Lane 7: DNA from *U. parvum* type strain ATCC 27845 (positive control). Lanes 8–15: DNA from prostate biopsies of patients (PCa cohort).

**Additional file 2: Figure S2.** PCR detection of *Ureaplasma urealyticum* 16S rRNA gene. Lane M: 1 kb + DNA ladder. Lanes 1–5: Specificity of primers of *U. urealyticum* 16S rRNA gene with DNA from human mitochondrion, *M. hominis*, *M. fermentans*, *M. genitalium*, and *U. parvum*. Lane 6: No DNA (negative control). Lane 7: DNA from *U. urealyticum* type strain ATCC 27618 (positive control). Lanes 8–15: DNA from prostate biopsies of patients (PCa cohort).

## Abbreviations

BPH: Benign Prostate Hyperplasia; DRE: Digital Rectal Examination; ExoSAP: Exonuclease Shrimp Alkaline Phosphatase; FFPE: Formalin-Fixed Paraffin-Embedded; KSA: Kingdom of Saudi Arabia; PCa: Prostate Cancer; PSA: Prostate Specific Antigen; TRUS: TransRectal UltraSound; TURP: TransUrethral Resection of the Prostate; WHO: World Health Organization

## Acknowledgements

The authors thank the Deanship of Scientific Research at King Khalid University, Kingdom of Saudi Arabia) for financial support of this work.

**Authors' contributions**

Conceived and designed the experiments: BBAM, EY, MHAS, and OMSAW. Performed the experiments: EY and NS. Analyzed the data: EY and BBAM. Contributed reagents/materials/analysis tools: OMSAW, MHAS, BBAM, NS, MSSAF, HH, AHAM, BM, and EY. Wrote the paper: EY and BBAM. All authors read and approved the final manuscript.

**Funding**

This study was supported by the Deanship of Scientific Research at King Khalid University (Abha town, Kingdom of Saudi Arabia) through General Research Project [grant number G.R.P1/39/39].

**Availability of data and materials**

All data generated and analysed during this study are included in this published article and its supplementary information files. Materials are available upon reasonable request.

**Ethics approval and consent to participate**

This study is about a collaborative project between King Khalid University in KSA and Institut Pasteur de Tunis in Tunisia. This study has been peer-approved by the Internal Review Board Committee of Aseer Central Hospital, Academic Affairs for Training and Research (Abha, Saudi Arabia) (26-12-2017) and by the Biomedical Ethical Committee of Institut Pasteur de Tunis (Tunis, Tunisia) (2019/5//LR16IPT).

**Consent for publication**

Before the collection of biopsy, all patients were informed about the procedures they would undergo and their possible complications. Medical charts were retrieved from the medical records of patients.

**Competing interests**

All the authors declare that there are no competing interests.

**Author details**

<sup>1</sup>Department of Clinical Laboratory Sciences, Faculty of Applied Medical Sciences, King Khalid University, Abha, Saudi Arabia. <sup>2</sup>Department of Surgery, College of Medicine, King Khalid University, P.O. Box 641, Abha 61421, Saudi Arabia. <sup>3</sup>Specialized Unit of Mycoplasmas, Laboratory of Molecular Microbiology, Vaccinology, and Biotechnology Development, Institut Pasteur de Tunis, University of Tunis El-Manar, Tunis, Tunisia. <sup>4</sup>Department of Clinical Laboratory Sciences, Faculty of Applied Medical Sciences, King Khalid University, P.O. Box 641, Abha 61421, Saudi Arabia. <sup>5</sup>Department of Pathology, College of Medicine, King Khalid University, P.O. Box 641, Abha 61421, Saudi Arabia. <sup>6</sup>Laboratory Department, Aseer Central Hospital, P. O. Box 34, Abha 51411, Saudi Arabia.

Received: 31 August 2020 Accepted: 8 January 2021

Published online: 20 January 2021

**References**

- WHO. 2018. <https://www.who.int/news-room/fact-sheets/detail/cancer>. Accessed 30 Oct 2020.
- Gann PH. Risk factors for prostate cancer. *Rev Urol*. 2002;4(Suppl 5):S3–S10.
- Schmid HP, Engeler DS, Pummer K, Schmitz-Dräger BJ. Prevention of prostate cancer: more questions than data. *Recent Results in Cancer Res*. 2014;174:101–7.
- Kolb R, Liu G-H, Janowski AM, Sutterwala FS, Zhang W. Inflammasomes in cancer: a double-edged sword. *Protein Cell*. 2014;5(1):12–20.
- De Marzo AM, Platz EA, Sutcliffe S, Xu J, Gronberg H, Drake CG, Nagai Y, Isaacs WB, Nelson WG. Inflammation in prostate carcinogenesis. *Nat Rev Cancer*. 2007;7:256–69.
- Karan D, Dubey S. From inflammation to prostate cancer: the role of inflammasomes. *Adv Urol*. 2016;31(5):1–5.
- Coussens LM, Werb Z. Inflammation and cancer. *Nature*. 2002;420(6917):860–7.
- Nelson WG, De Marzo AM, DeWeese TL, et al. The role of inflammation in the pathogenesis of prostate cancer. *J Urol*. 2004;172(5):S6–S12.
- Kuper H, Adami HO, Trichopoulos D. Infections as a major preventable cause of human cancer. *J Intern Med*. 2000;248(3):171–83.
- Can infections cause cancer? <https://www.cancer.org/cancer/cancer-causes/infectious-agents/infections-that-can-lead-to-cancer/intro.html>. Accessed 22 Oct 2020.
- zur Hausen H. Viruses in human cancers. *Science*. 1991;254(5035):1167–73.
- Parkin DM. The global health burden of infection-associated cancers in the year 2002. *Int J Cancer*. 2006;118:3030–44.
- Vogelmann R, Amieva MR. The role of bacterial pathogens in cancer. *Curr Opin Microbiol*. 2007;10:76–81.
- Mager D. Bacteria and cancer: cause, coincidence or cure? A review. *J Transl Med*. 2006;4:14.
- Ellmerich S, Scholler M, Duranton B, Gosse F, Galluser M, Klein JP, Raul F. Promotion of intestinal carcinogenesis by *Streptococcus bovis*. *Carcinogenesis*. 2000;21:753–6.
- Lazcano-Ponce EC, Miquel JF, Munoz N, Herrero R, Ferrecio C, Wistuba II, Alonso de Ruiz P, Aristi UG, Nervi F. Epidemiology and molecular pathology of gallbladder cancer. *CA Cancer J Clin*. 2001;51:349–64.
- Littman AJ, Jackson LA, Vaughan TL. *Chlamydia pneumoniae* and lung cancer: epidemiologic evidence. *Cancer Epidemiol Biomark Prev*. 2005;14:773–8.
- Dehio C. *Bartonella*-host-cell interactions and vascular tumour formation. *Nat Rev Microbiol*. 2005;3:621–31.
- zur Hausen H. The search for infectious causes of human cancers: where and why. *Virology*. 2009;392:1–10.
- Touati E. When bacteria become mutagenic and carcinogenic: lessons from *H. pylori*. *Mutat Res*. 2010;703:66–70.
- Marshall BJ, Windsor HM. The relation of *Helicobacter pylori* to gastric adenocarcinoma and lymphoma: pathophysiology, epidemiology, screening, clinical presentation, treatment, and prevention. *Med Clin North Am*. 2005;89:313–44.
- Fallon RJ, Grist NR, Inman DR, Lemcke RM, Negroni G, Woods DA. Further studies of agents isolated from tissue cultures inoculated with human leukaemic bone-marrow. *Br Med J*. 1965;2(5458):388–91.
- Hayflick L, Koprowski H. Direct agar isolation of mycoplasmas from human leukaemic bone marrow. *Nature*. 1965;205:713–4.
- Cimolai N. Do mycoplasmas cause human cancer? *Can J Microbiol*. 2001;47:691–7.
- Zhang S, Tsai S, Wu TT, Li B, Shih JWK, Lo SC. *Mycoplasma fermentans* infection promotes immortalization of human peripheral blood mononuclear cells in culture. *Blood*. 2004;104:4252–9.
- Tsai S, Wear DJ, Shih JW, Lo SC. Mycoplasmas and oncogenesis: persistent infection and multistage malignant transformation. *Proc Natl Acad Sci U S A*. 1995;92:10197–201.
- Schmidhauser C, Dudler R, Schmidt T. A mycoplasma protein influences tumour cell invasiveness and contact inhibition *in vitro*. *J Cell Sci*. 1990;95:499–506.
- Zhang B, Shih JW, Wear DJ, Tsai S, Lo SC. High-level expression of H-ras and c-myc oncogenes in mycoplasma-mediated malignant cell transformation. *Proc Soc Exp Biol Med*. 1997;214:359–66.
- Miyake M, Ohnishi K, Hori S, Nakano A, Nakano R, Yano H, et al. *Mycoplasma genitalium* infection and chronic inflammation in human prostate cancer: detection using prostatectomy and needle biopsy specimens. *Cells*. 2019;8:212.
- Eslami G, Goudarzi H, Baseri N, Ghalavand Z, Taherpour A, Zhaam H, et al. The prevalence of *Ureaplasma urealyticum* and *Mycoplasma genitalium* in patients with prostate cancer in Shohada Hospital in Tehran, Iran. *Novel Biomed*. 2015;3(2):73–8.
- Yow MA, Tabrizi SN, Severi G, Bolton DM, Pedersen J, Longano A, et al. Detection of infectious organisms in archival prostate cancer tissues. *BMC Cancer*. 2014;14:579.
- Erturhan SM, Bayrak O, Pehlivan S, Oztgul H, Seckiner I, Sever T, et al. Can *mycoplasma* contribute to formation of prostate cancer? *Int Urol Nephrol*. 2013;45(1):33–8.
- Barykova YA, Logunov DY, Shmarov MM, Vinarov AZ, Fiev DN, Vinarova NA, et al. Association of *Mycoplasma hominis* infection with prostate cancer. *Oncotarget*. 2011;2(4):289–97.
- Heshmat MY, Kovi J, Herson J, Jones GW, Jackson MA. Epidemiologic association between gonorrhoea and prostatic carcinoma. *Uro*. 1975;6:457–60.
- Steele R, Lees REM, Kraus AS, Chandar R. Sexual factors in the epidemiology of cancer of the prostate. *J Chronic Dis*. 1971;24(1):29–37.
- Jemal A, Siegel R, Ward E, Hao Y, Xu J, Murray T, Thun M. Cancer statistics, 2008. *CA Cancer J Clin*. 2008;58:71–96.

37. Ito K. Prostate cancer in Asian men. *Nat Rev Urol*. 2014;11(4):197–212.
38. Mosli HA, Abdel-Meguid TA, Al-Maghrabi JA, Kamal WK, Saadah HA, Farsi HM. The clinicopathologic patterns of prostatic diseases and prostate cancer in Saudi patients. *Saudi Med J*. 2009;30(11):1439–43.
39. Alghamdi IG, Hussain II, Alghamdi MS, El-Sheemy MA. The incidence rate of prostate cancer in Saudi Arabia: an observational descriptive epidemiological analysis of data from the Saudi Cancer Registry 2001–2008. *Hematol Oncol Stem Cell Ther*. 2014;7(1):18–26.
40. Gleason DF. Histologic grading of prostate cancer: a perspective. *Hum Pathol*. 1992;23:273–9.
41. Hirt B. Selective extraction of polyoma DNA from infected mouse cell cultures. *J Mol Biol*. 1967;26(2):365–9.
42. Tully JG, Whitcomb RF, Clark HF, Williamson DL. Pathogenic *Mycoplasma*: cultivation and vertebrate pathogenicity of a new *spiroplasma*. *Science*. 1977;195:892–4.
43. Jensen JS, Björnelius E, Dohn B, Lidbrink P. Use of TaqMan 5' nuclease real-time PCR for quantitative detection of *Mycoplasma genitalium* DNA in males with and without urethritis who were attendees at a sexually transmitted disease clinic. *J Clin Microbiol*. 2004;42:683–92.
44. Wang RYH, HU WS, Dawson MS, et al. Selective detection of *Mycoplasma fermentans* by polymerase chain reaction and by using a nucleotide sequence within the insertion sequence-like element. *J Clin Microbiol*. 1992; 1(30):245–8.
45. Mallard K, Schopfer K, Bodmer T. Development of real-time PCR for the differential detection and quantification of *Ureaplasma urealyticum* and *Ureaplasma parvum*. *J Microbiol Methods*. 2005;60:13–9.
46. Parkin DM, Bray F, Ferlay J, Pisani P. Global cancer statistics. 2002. *CA Cancer J Clin*. 2005;55:74–108.
47. De Flora S, La Maestra S. Epidemiology of cancers of infectious origin and prevention strategies. *J prev med hyg*. 2015;56:E15–20.
48. De Flora S, Bonanni P. The prevention of infection-associated cancers. *Carcinogenesis*. 2011;32(6):787–95.
49. Takayama S, Takahashi H, Matsuo Y, Okada Y, Manabe T. Effects of *Helicobacter pylori* infection on human pancreatic cancer cell line. *Hepatogastroenterology*. 2007;54(80):2387–91.
50. Guan YS, He Q, Wang MQ, Li P. Nuclear factor kappa B and hepatitis viruses. *Expert Opin Ther Targets*. 2008;12(3):265–80.
51. Koyi H, Branden E, Gnarpe J, Gnarpe H, Steen B. An association between chronic infection with *Chlamydia pneumoniae* and lung cancer. A prospective 2-year study. *APMIS*. 2001;109:572–80.
52. Klein RS, Catalano MT, Edberg SC, Casey JI, Steigbigel NH. *Streptococcus bovis* septicemia and carcinoma of the colon. *Ann Intern Med*. 1979;91:560–2.
53. Parsonnet J, Friedman GD, Vandersteen DP, Chang Y, Vogelstein JH, Orentreich N, Sibley RK. *Helicobacter pylori* infection and the risk of gastric carcinoma. *New Engl J Med*. 1991;325:1127–31.
54. Nath G, Singh YK, Kumar K, Gulati AK, Shukla VK, Khanna AK, et al. Association of carcinoma of the gallbladder with typhoid carriage in a typhoid endemic area using nested PCR. *J Infect Dev Ctries*. 2008;2(4):302–7.
55. Doorbar J, Quint W, Banks L, Bravo IG, Stoler M, Broker TR, et al. The biology and life-cycle of human papillomaviruses. *Vaccine*. 2012;30(Suppl 5):F55–70.
56. Yang P, Markowitz GJ, Wang X-F. The hepatitis B virus-associated tumor microenvironment in hepatocellular carcinoma. *Natl Sci Rev*. 2014;1(3):396–412.
57. Coghill AE, Hildesheim A. Epstein-Barr virus antibodies and the risk of associated malignancies: review of the literature. *Am J Epidemiol*. 2014; 180(7):687–95.
58. Sutcliffe S. Sexually transmitted infections and risk of prostate cancer: review of historical and emerging hypotheses. *Future Oncol*. 2010;6(8):1289–311.
59. Huang W-Y, Hayes R, Pfeiffer R, Viscidi RP, Lee FK, Wang YF, et al. Sexually transmissible infections and prostate cancer risk. *Cancer Epidemiol Biomark Prev*. 2008;17(9):2374–81.
60. Sutcliffe S, Giovannucci E, Gaydos CA, Viscidi RP, Jenkins FJ, Zenilman JM, et al. Plasma antibodies against *Chlamydia trachomatis*, human papillomavirus, and human herpesvirus type 8 in relation to prostate cancer: a prospective study. *Cancer Epidemiol Biomark Prev*. 2007;16(8):1573–80.
61. Mollica V, Rizzo A, Massari F. The pivotal role of TMPRSS2 in coronavirus disease 2019 and prostate cancer. *Future Oncol*. 2020. <https://doi.org/10.2217/fo-2020-0571>.
62. Bhowmick NA, Oft J, Dorff T, Pal S, Agarwal N, Figlin RA, et al. COVID-19 and androgen-targeted therapy for prostate cancer patients. *Endocr Relat Cancer*. 2020;27(9):R281–92.
63. Mosli HA. Prostate cancer in Saudi Arabia in 2002. *Saudi Med J*. 2003;24(6): 573–81.
64. Sfanos KS, Isaacs JT. The “infectious” nature of human prostate cancer: a cautionary note. *Oncotarget*. 2011;2(4):281–3.

## Publisher's Note

Springer Nature remains neutral with regard to jurisdictional claims in published maps and institutional affiliations.

**Ready to submit your research? Choose BMC and benefit from:**

- fast, convenient online submission
- thorough peer review by experienced researchers in your field
- rapid publication on acceptance
- support for research data, including large and complex data types
- gold Open Access which fosters wider collaboration and increased citations
- maximum visibility for your research: over 100M website views per year

**At BMC, research is always in progress.**

Learn more [biomedcentral.com/submissions](https://biomedcentral.com/submissions)

